
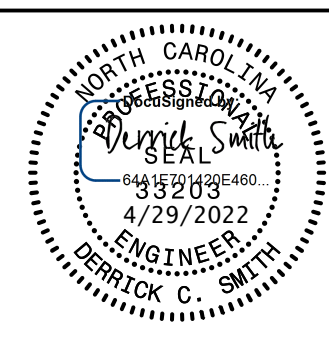


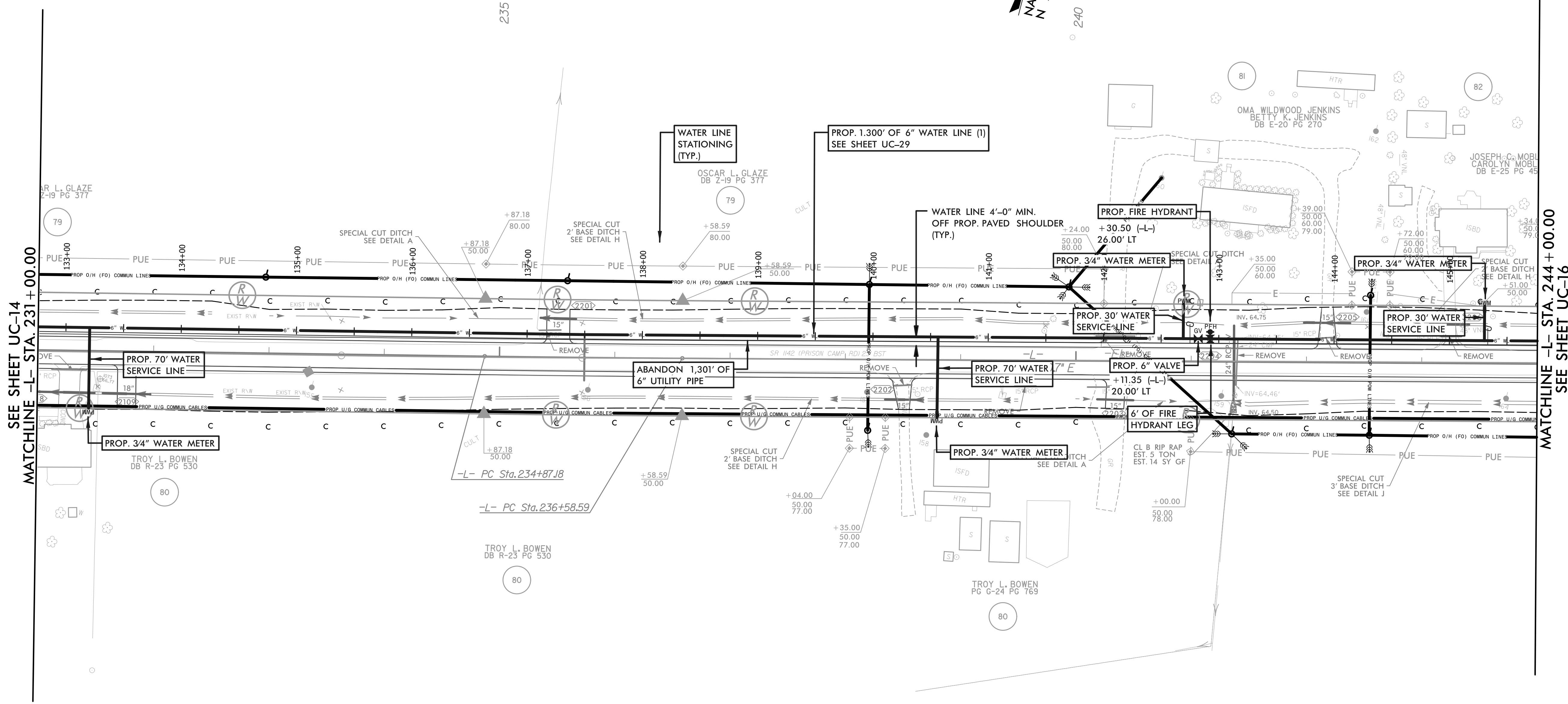
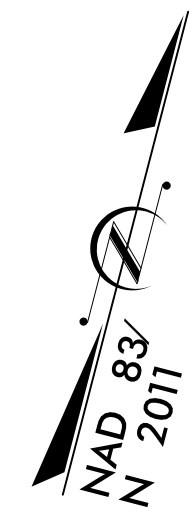
5/14/99

PREPARED IN THE OFFICE OF:

THE WOOTEN COMPANY
301 West 14th Street, Greensboro, NC 27404
 252.732.0096 Fax: 252.732.0221
 License Number: F-003

PROJECT REFERENCE NO. R-4705	SHEET NO. UC-15
DESIGNED BY: DCS	
DRAWN BY: TK8TH	
CHECKED BY: DCS	
APPROVED BY: DCS	
REVISED: 3-18-2022	NORTH CAROLINA DEPARTMENT OF TRANSPORTATION UTILITIES ENGINEERING SEC. PHONE: (919) 707-6690 FAX: (919) 250-4151
WATER LINE CONSTRUCTION SHOWN ON THIS SHEET	

FINAL PLANS
RELEASED FOR CONSTRUCTION

UTILITY CONSTRUCTION



SEE SHEET UC-14
MATCHLINE -L- STA. 231 + 00.00

MATCHLINE -L- STA. 244 + 00.00
SEE SHEET UC-16

NOTE:
 THE ESTIMATED QUANTITY OF DUCTILE IRON WATER PIPE FITTINGS ON THIS PLAN SHEET IS 125 POUNDS. THE ACTUAL QUANTITY AND TYPE OF FITTINGS WILL VARY BASED ON FIELD CONDITIONS.

NOTE 1:
 CONTRACTOR TO LOCATE, VERIFY AND REPLACE ALL WATER METER SERVICES.

-L-
 PI Sta 235+72.88
 $\Delta = 0' 25' 37.2''$ (LT)
 $D = 0' 14' 56.8''$
 $L = 171.4'$
 $T = 85.70'$
 $R = 23,000.00'$
 $DS = 60$ MPH
 $SE = NC$
 $RO = SEE$ PLANS

5/14/99