

5/14/99

PREPARED IN THE OFFICE OF:

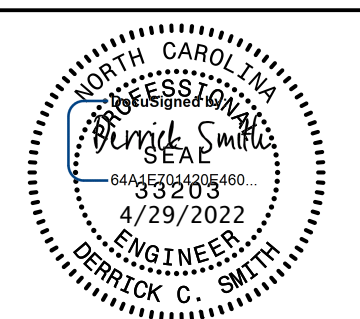


VERTICAL SCALE
0 5' 10'

HORIZONTAL SCALE
0 25' 50'

WATER LINE CONSTRUCTION
SHOWN ON THIS SHEET

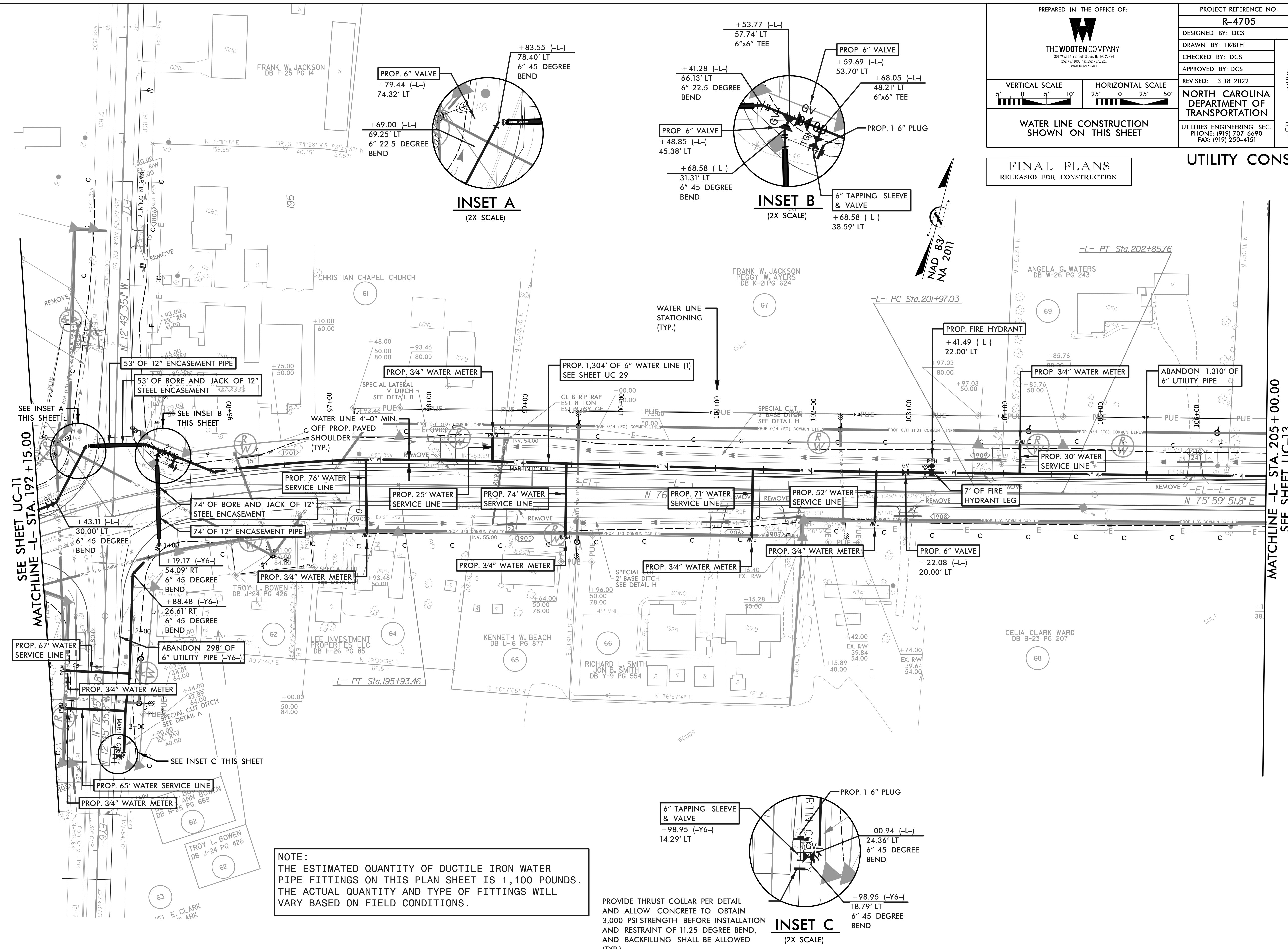
PROJECT REFERENCE NO. R-4705	SHEET NO. UC-12
DESIGNED BY: DCS	
DRAWN BY: TKBTH	
CHECKED BY: BCS	
APPROVED BY: DCS	
REVISED: 3-18-2022	
NORTH CAROLINA DEPARTMENT OF TRANSPORTATION	
UTILITIES ENGINEERING SEC. PHONE: (919) 707-6690 FAX: (919) 250-4151	



Document Not Considered Final
Unless All Signatures Completed
UTILITY CONSTRUCTION
PLANS ONLY

FINAL PLANS
RELEASED FOR CONSTRUCTION

UTILITY CONSTRUCTION



INSET A
(2X SCALE)

INSET B
(2X SCALE)

INSET C
(2X SCALE)

NOTE:
THE ESTIMATED QUANTITY OF DUCTILE IRON WATER PIPE FITTINGS ON THIS PLAN SHEET IS 1,100 POUNDS. THE ACTUAL QUANTITY AND TYPE OF FITTINGS WILL VARY BASED ON FIELD CONDITIONS.

PROVIDE THRUST COLLAR PER DETAIL AND ALLOW CONCRETE TO OBTAIN 3,000 PSI STRENGTH BEFORE INSTALLATION AND RESTRAINT OF 11.25 DEGREE BEND, AND BACKFILLING SHALL BE ALLOWED (TYP.)

NOTE 1:
CONTRACTOR TO LOCATE, VERIFY AND REPLACE ALL WATER METER SERVICES.

SEE SHEET UC-11
MATCHLINE -L- STA. 192+15.00

MATCHLINE -L- STA. 205+00.00
SEE SHEET UC-13

5/14/99