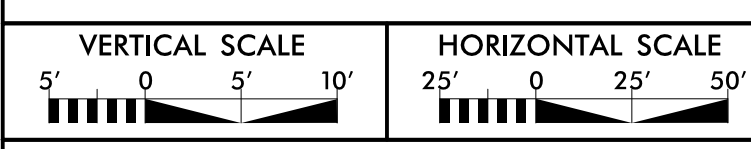


5/14/1999

PREPARED IN THE OFFICE OF:

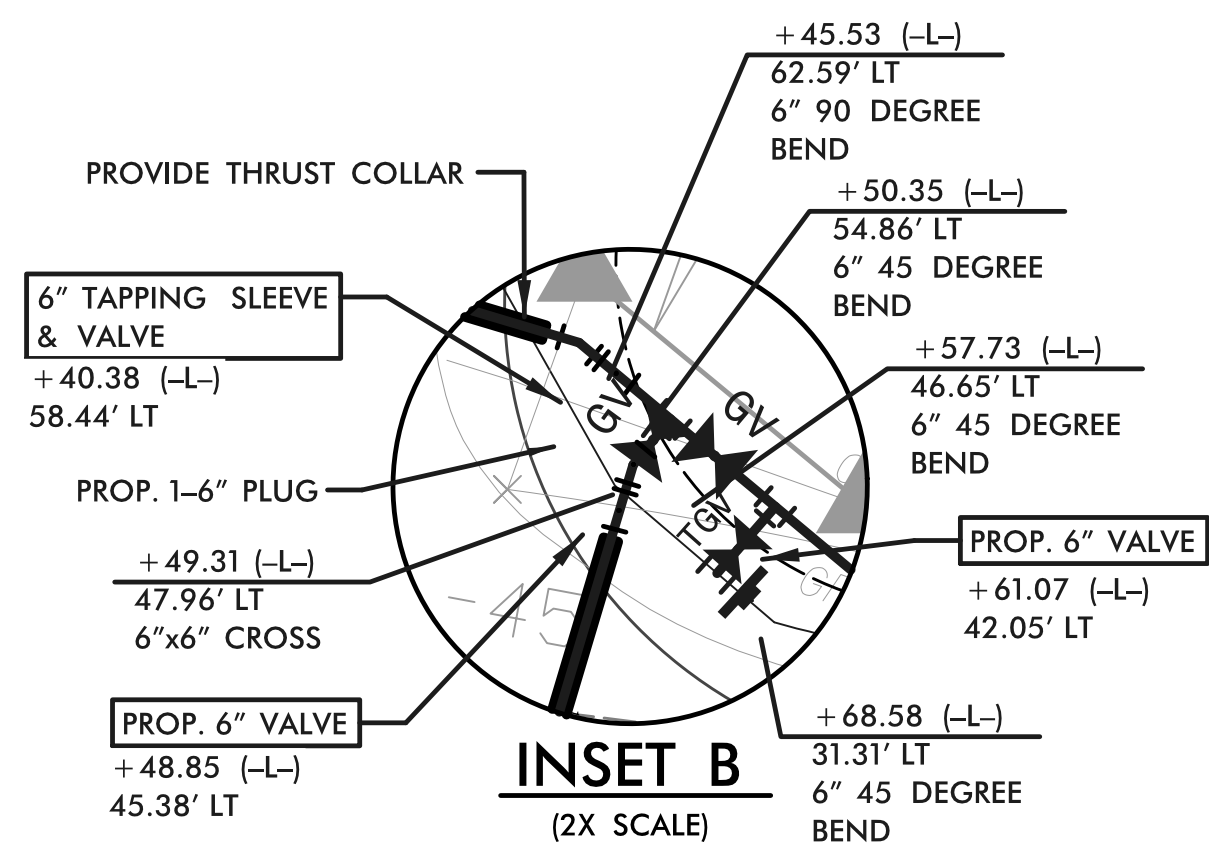
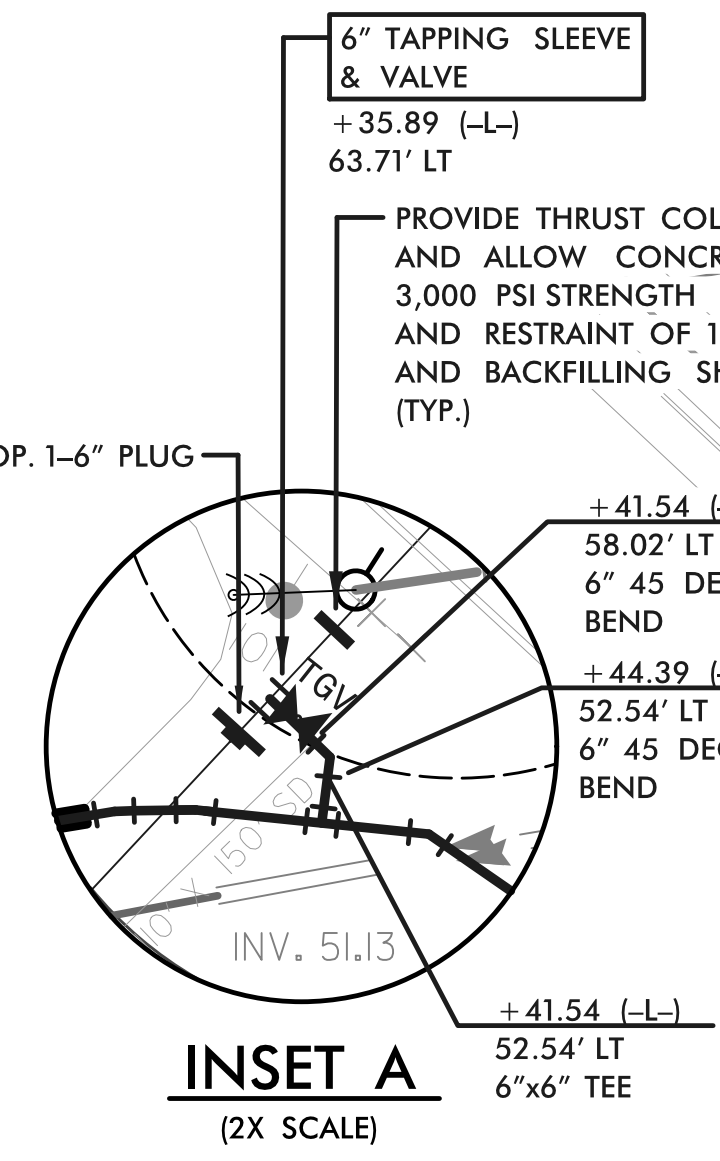
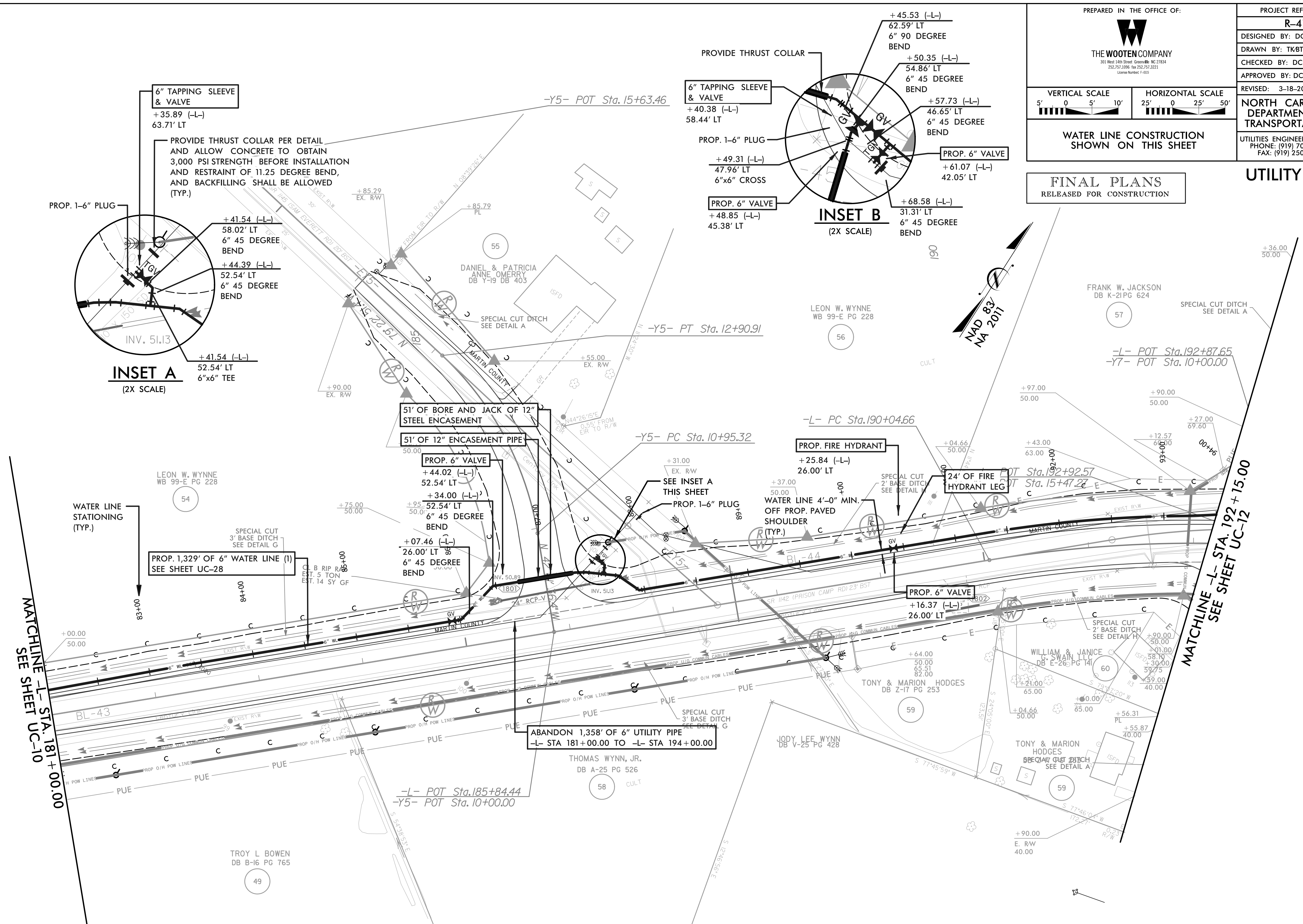


WATER LINE CONSTRUCTION SHOWN ON THIS SHEET

| | |
|--|---------------------------|
| PROJECT REFERENCE NO. R-4705 | SHEET NO. UC-11 |
| DESIGNED BY: DCS | |
| DRAWN BY: TK8TH | |
| CHECKED BY: DCS | |
| APPROVED BY: DCS | |
| REVISED: 3-18-2022 | |
| NORTH CAROLINA DEPARTMENT OF TRANSPORTATION UTILITIES ENGINEERING SEC. PHONE: (919) 707-6690 FAX: (919) 250-4151 | |
| Document Not Considered Final Unless All Signatures Completed UTILITY CONSTRUCTION PLANS ONLY | |

FINAL PLANS
RELEASED FOR CONSTRUCTION

UTILITY CONSTRUCTION



NOTE:
 THE ESTIMATED QUANTITY OF DUCTILE IRON WATER PIPE FITTINGS ON THIS PLAN SHEET IS 700 POUNDS. THE ACTUAL QUANTITY AND TYPE OF FITTINGS WILL VARY BASED ON FIELD CONDITIONS.

NOTE 1:
 CONTRACTOR TO LOCATE, VERIFY AND REPLACE ALL WATER METER SERVICES.

5/14/1999