


PREPARED IN THE OFFICE OF:



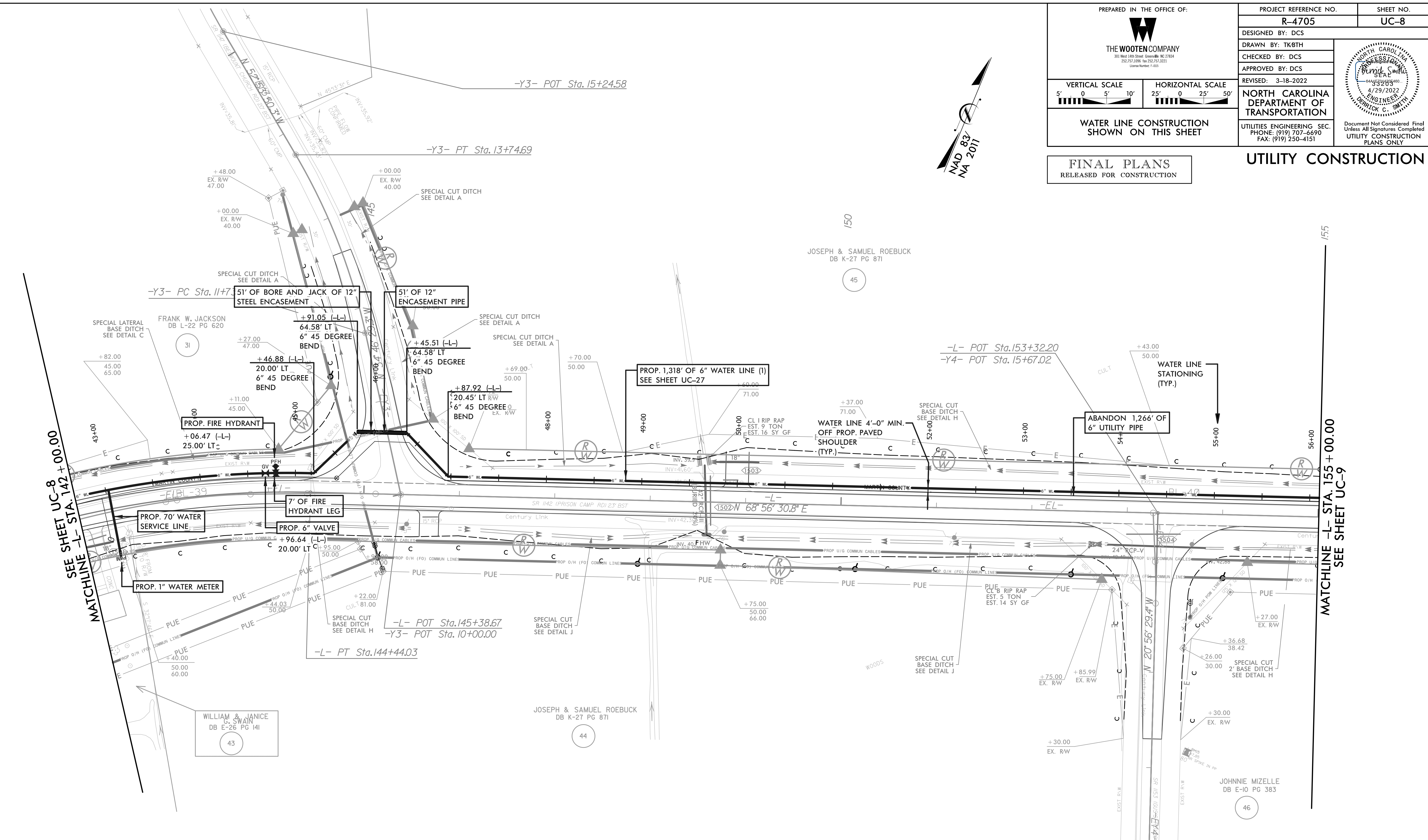
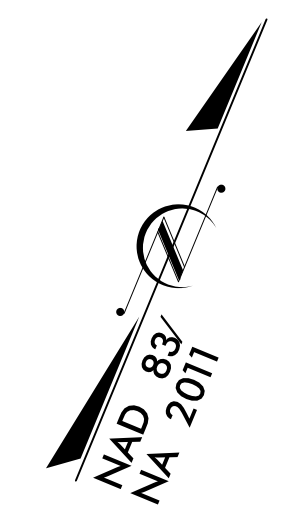
THE WOOTEN COMPANY
301 West 14th Street, Greensboro, NC 27404
919.707.2090 Fax 919.707.2021
Licenses: 1-002

PROJECT REFERENCE NO.	R-4705	SHEET NO.	UC-8
DESIGNED BY:	DCS		
DRAWN BY:	TK/BTH		
CHECKED BY:	DCS		
APPROVED BY:	DCS		
REVISED:	3-18-2022		
NORTH CAROLINA DEPARTMENT OF TRANSPORTATION			
UTILITIES ENGINEERING SEC.	PHONE: (919) 707-6690 FAX: (919) 250-4151		

Document Not Considered Final
Unless All Signatures Completed
UTILITY CONSTRUCTION PLANS ONLY

FINAL PLANS
RELEASED FOR CONSTRUCTION

UTILITY CONSTRUCTION



NOTE:
THE ESTIMATED QUANTITY OF DUCTILE IRON WATER PIPE FITTINGS ON THIS PLAN SHEET IS 425 POUNDS. THE ACTUAL QUANTITY AND TYPE OF FITTINGS WILL VARY BASED ON FIELD CONDITIONS.

NOTE 1:
CONTRACTOR TO LOCATE, VERIFY AND REPLACE ALL WATER METER SERVICES.

-Y3-	-L-
PI Sta 12+74.84	PI Sta 142+90.34
$\Delta = 18^{\circ} 07' 35.4''$ (LT)	$\Delta = 18^{\circ} 13' 05.1''$ (RT)
$D = 9^{\circ} 00' 00.0''$	$D = 5^{\circ} 52' 35.4''$
$L = 201.4'$	$L = 310.02'$
$T = 101.55'$	$T = 156.33'$
$R = 636.62'$	$R = 975.00'$
$DS = 60MPH$	$DS = 55 MPH$
$SE = 0.08 FT/FT$	$SE = 0.08 FT/FT$
$RO = SEE PLANS$	$RO = SEE PLANS$

5/14/99

SEE SHEET UC-8 L-STA. 142+00.00

MATCHLINE -L- STA. 155+00.00 SEE SHEET UC-9