

PREPARED IN THE OFFICE OF:



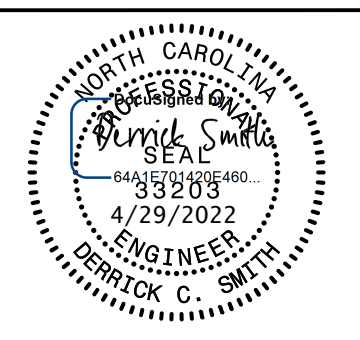
THE WOOTEN COMPANY
301 West 14th Street, Greensboro, NC 27404
252.732.0100 Fax: 252.732.0211
Licenses: 1-020

PROJECT REFERENCE NO. R-4705 SHEET NO. UC-6

DESIGNED BY: DCS
DRAWN BY: TK8TH
CHECKED BY: DCS
APPROVED BY: DCS

REVISED: 3-18-2022
NORTH CAROLINA DEPARTMENT OF TRANSPORTATION

UTILITIES ENGINEERING SEC.
PHONE: (919) 707-6690
FAX: (919) 250-4151



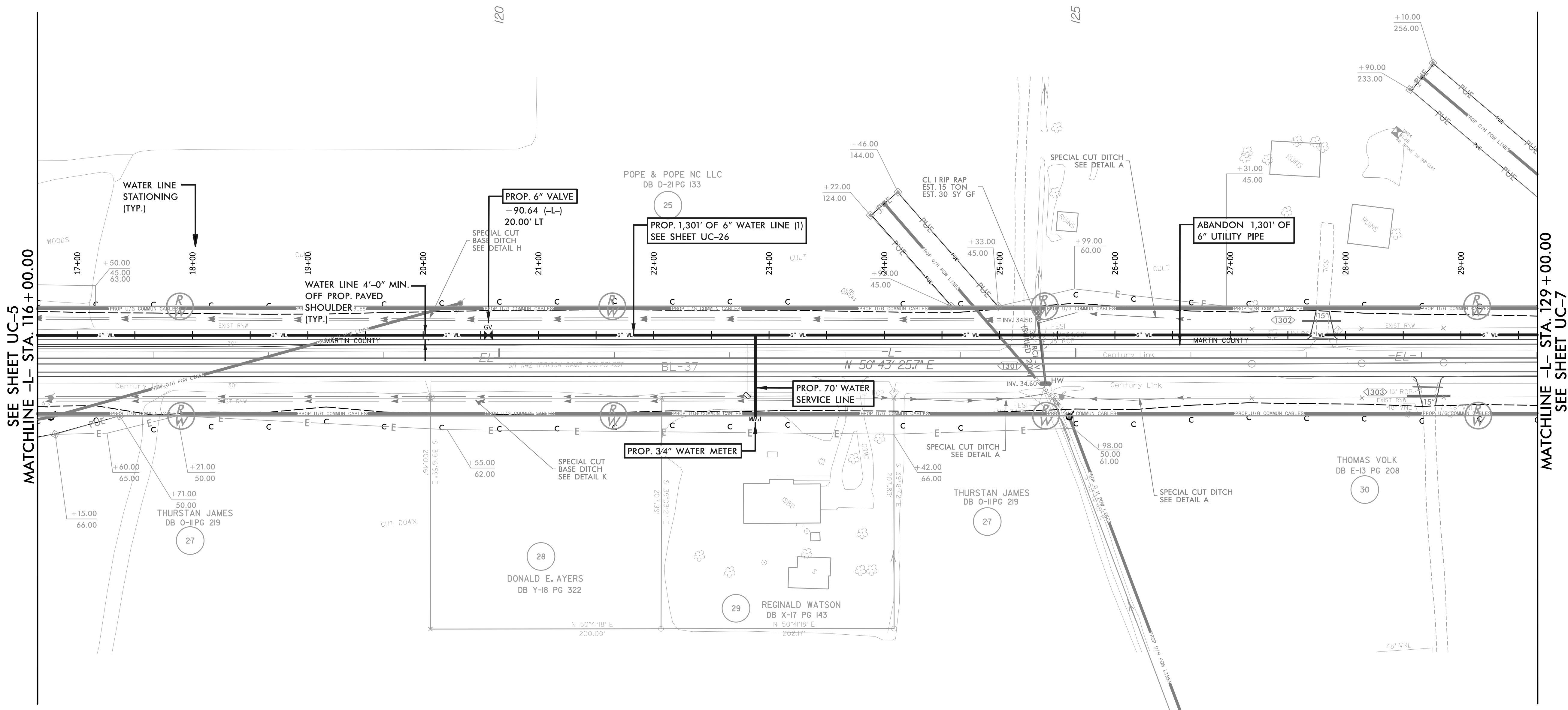
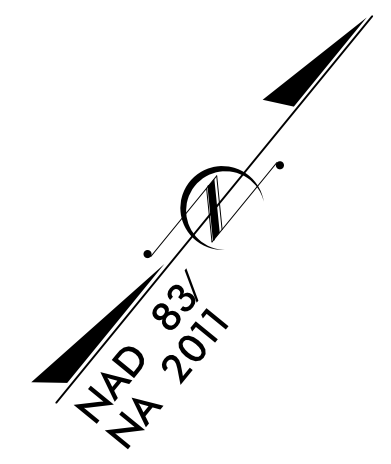
Document Not Considered Final Unless All Signatures Completed
UTILITY CONSTRUCTION PLANS ONLY



WATER LINE CONSTRUCTION SHOWN ON THIS SHEET

FINAL PLANS
RELEASED FOR CONSTRUCTION

UTILITY CONSTRUCTION



NOTE:
THE ESTIMATED QUANTITY OF DUCTILE IRON WATER PIPE FITTINGS ON THIS PLAN SHEET IS 0 POUNDS. THE ACTUAL QUANTITY AND TYPE OF FITTINGS WILL VARY BASED ON FIELD CONDITIONS.

NOTE 1:
CONTRACTOR TO LOCATE, VERIFY AND REPLACE ALL WATER METER SERVICES.

5/14/99