


5/14/99

PREPARED IN THE OFFICE OF:



**THE WOOTEN COMPANY**  
301 West 14th Street, Greensboro, NC 27404  
252.732.0100 Fax: 252.732.0211  
Licenses: 1-020

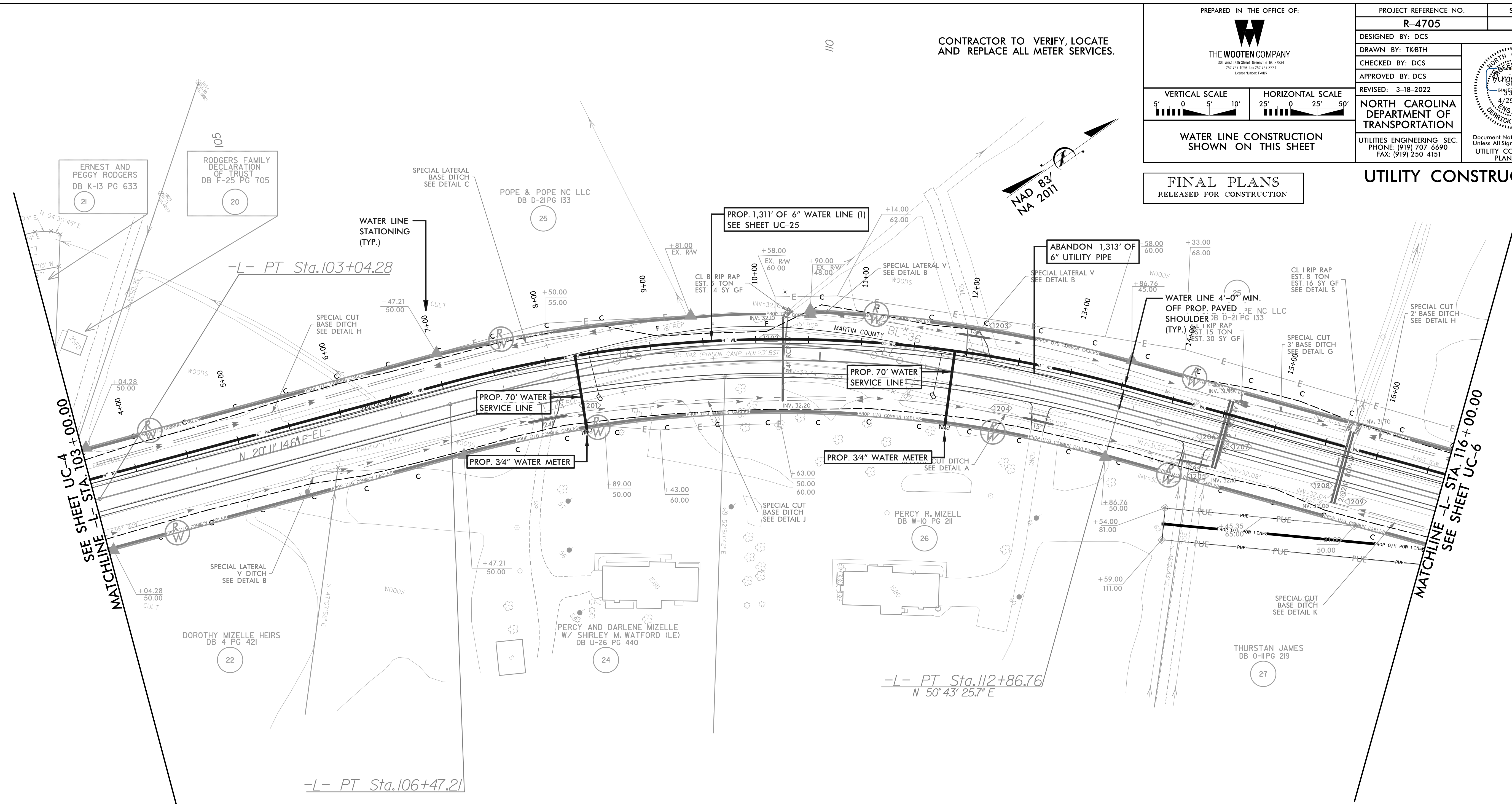
PROJECT REFERENCE NO.	SHEET NO.
R-4705	UC-5
DESIGNED BY: DCS	
DRAWN BY: TK8TH	
CHECKED BY: DCS	
APPROVED BY: DCS	
REVISED: 3-18-2022	

**NORTH CAROLINA DEPARTMENT OF TRANSPORTATION**  
UTILITIES ENGINEERING SEC.  
PHONE: (919) 707-6690  
FAX: (919) 250-4151

Document Not Considered Final  
Unless All Signatures Completed  
UTILITY CONSTRUCTION PLANS ONLY

**FINAL PLANS**  
RELEASED FOR CONSTRUCTION

**UTILITY CONSTRUCTION**



**NOTE:**  
THE ESTIMATED QUANTITY OF DUCTILE IRON WATER PIPE FITTINGS ON THIS PLAN SHEET IS 0 POUNDS. THE ACTUAL QUANTITY AND TYPE OF FITTINGS WILL VARY BASED ON FIELD CONDITIONS.

**NOTE 1:**  
CONTRACTOR TO LOCATE, VERIFY AND REPLACE ALL WATER METER SERVICES.

-L-  
PI Sta. 109+74.78  
 $\Delta = 30^\circ 32' 11.1" (RT)$   
 $D = 4' 46' 28.7"$   
 $L = 639.55'$   
 $T = 327.57'$   
 $R = 1,200.00'$   
 $DS = 60 MPH$   
 $SE = 0.08 FT/FT$   
 $RO = SEE PLANS$