
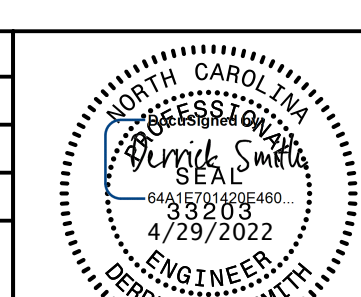


5/14/99

PREPARED IN THE OFFICE OF:

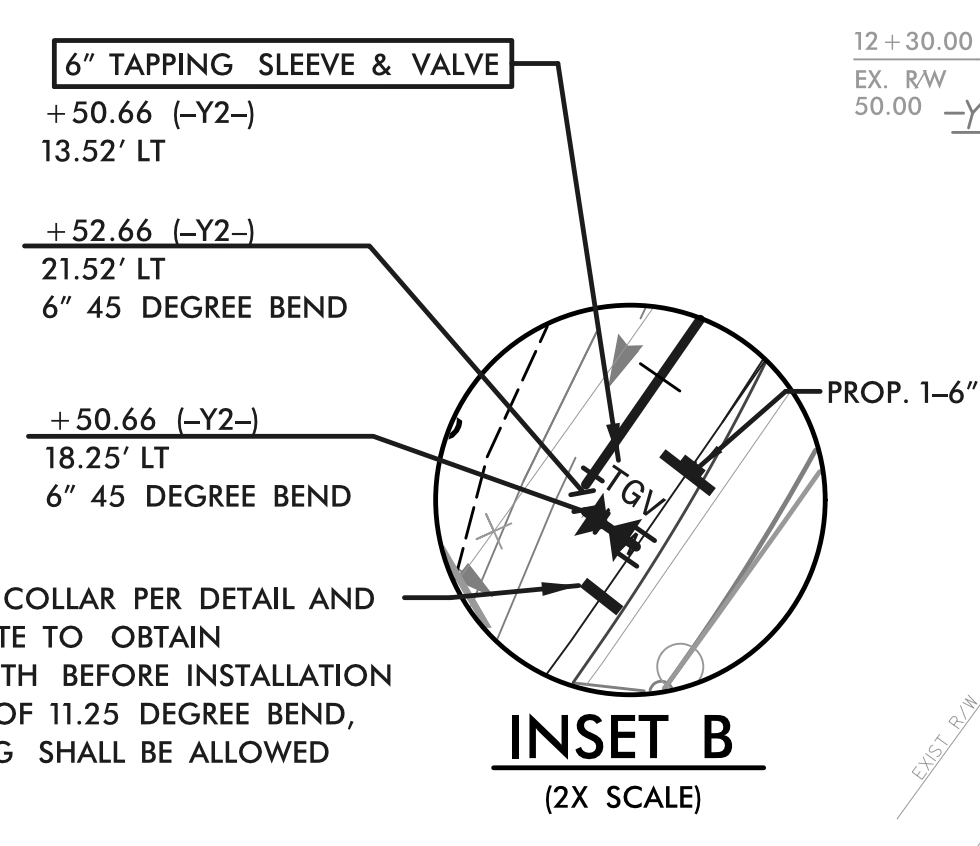
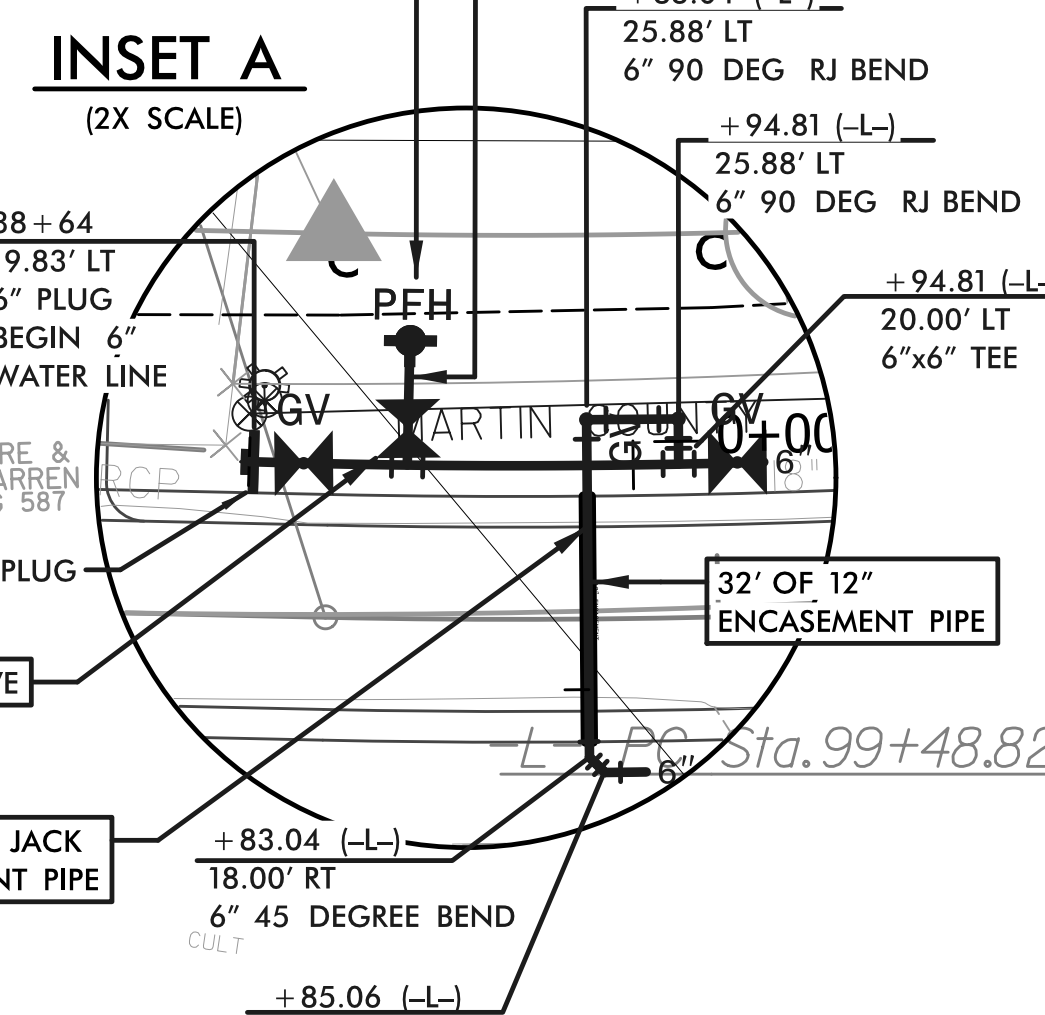
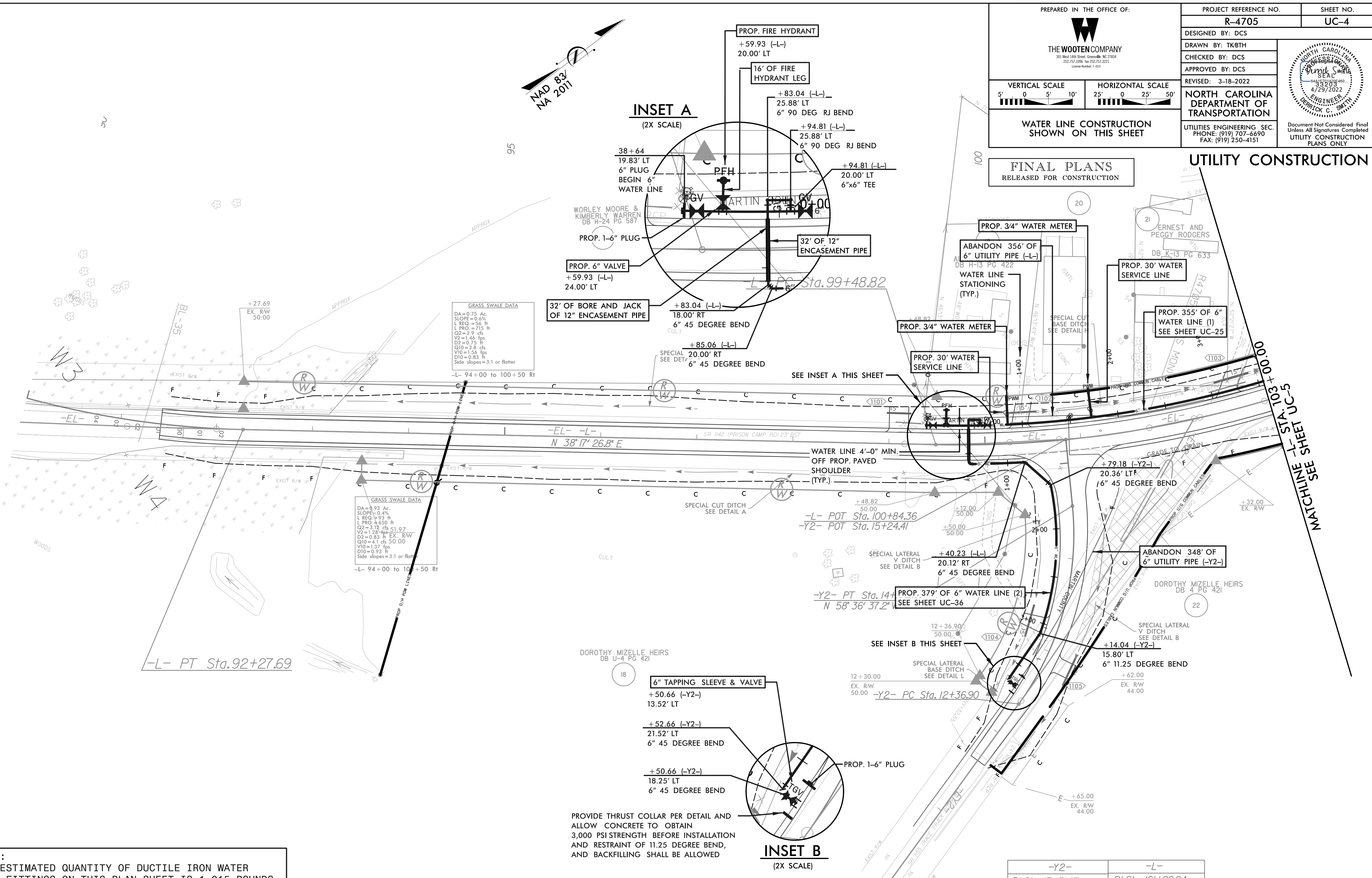


THE WOOTEN COMPANY
301 West 14th Street, Greenville, NC 27834
252.732.0196 Fax: 252.732.0211
Licenses: 1-020

PROJECT REFERENCE NO.	R-4705	SHEET NO.	UC-4
DESIGNED BY:	DCS		
DRAWN BY:	TKBTH		
CHECKED BY:	DCS		
APPROVED BY:	DCS		
REVISED:	3-18-2022		
NORTH CAROLINA DEPARTMENT OF TRANSPORTATION			
UTILITIES ENGINEERING SEC.		Document Not Considered Final Unless All Signatures Completed	
PHONE: (919) 707-6690		UTILITY CONSTRUCTION PLANS ONLY	
FAX: (919) 250-4151			

FINAL PLANS
RELEASED FOR CONSTRUCTION

UTILITY CONSTRUCTION



NOTE:
THE ESTIMATED QUANTITY OF DUCTILE IRON WATER PIPE FITTINGS ON THIS PLAN SHEET IS 1,015 POUNDS. THE ACTUAL QUANTITY AND TYPE OF FITTINGS WILL VARY BASED ON FIELD CONDITIONS.

NOTE 1:
CONTRACTOR TO LOCATE, VERIFY AND REPLACE ALL WATER METER SERVICES.

PROVIDE THRUST COLLAR PER DETAIL AND ALLOW CONCRETE TO OBTAIN 3,000 PSI STRENGTH BEFORE INSTALLATION AND RESTRAINT OF 11.25 DEGREE BEND, AND BACKFILLING SHALL BE ALLOWED

-Y2-	-L-
PI Sta 13+51.07	PI Sta 101+28.04
Δ = 41' 40" 23.4" (LT)	Δ = 18' 06" 12.1" (LT)
D = 19' 05" 54.9"	D = 5' 05" 34.6"
L = 218.20'	L = 355.46'
T = 114.18'	T = 179.22'
R = 300.00'	R = 1125.00'
DS = 60 MPH	DS = 55 MPH
SE = 0.08 FT/FT	SE = 0.08 FT/FT
RO = SEE PLANS	RO = SEE PLANS