



-RPD-	-LPD-	-LPA-	-RPA-
PI Sta 11+5.08 Δ = 11° 34' 44.8" (RT) D = 5' 02' 53.1" L = 229.38' T = 115.08' R = 1,135.00' DS = 60 MPH SE = 0.08 FT/FT RO = SEE PLANS	PI Sta 10+62.49 Δ = 14° 31' 10.7" (RT) D = 11' 40' 46.9" L = 124.32' T = 62.49' R = 490.56' DS = 60 MPH SE = 0.08 FT/FT RO = SEE PLANS	PI Sta 10+69.13 Δ = 37° 47' 10.7" (LT) D = 28' 21' 51.3" L = 133.22' T = 69.13' R = 202.00' DS = 60 MPH SE = 0.08 FT/FT RO = SEE PLANS	PI Sta 11+92.61 θ _s = 24° 49' 07.4" L _s = 175.00' LT = 117.83' ST = 59.40'
PI Sta 11+19.68 Δ = 11° 09' 35.7" (LT) D = 4' 40' 37.9" L = 238.60' T = 119.68' R = 1,225.00' DS = 60 MPH SE = 0.08 FT/FT RO = SEE PLANS			

I, Garry L. Moore, certify that the right of way and permanent easement monumentation for this project shown herein was completed under my direct and responsible charge from an actual survey made under my supervision; that all horizontal closures had a minimum ratio of precision of 1:10,000 (Class A). Field work was performed from JAN. 2022 to FEB. 2022, and all coordinates are based on NAD83/2011; That this survey was performed to meet the requirements of 21NCAC 56.1600 as applicable.

This 11th day of March, 2022.

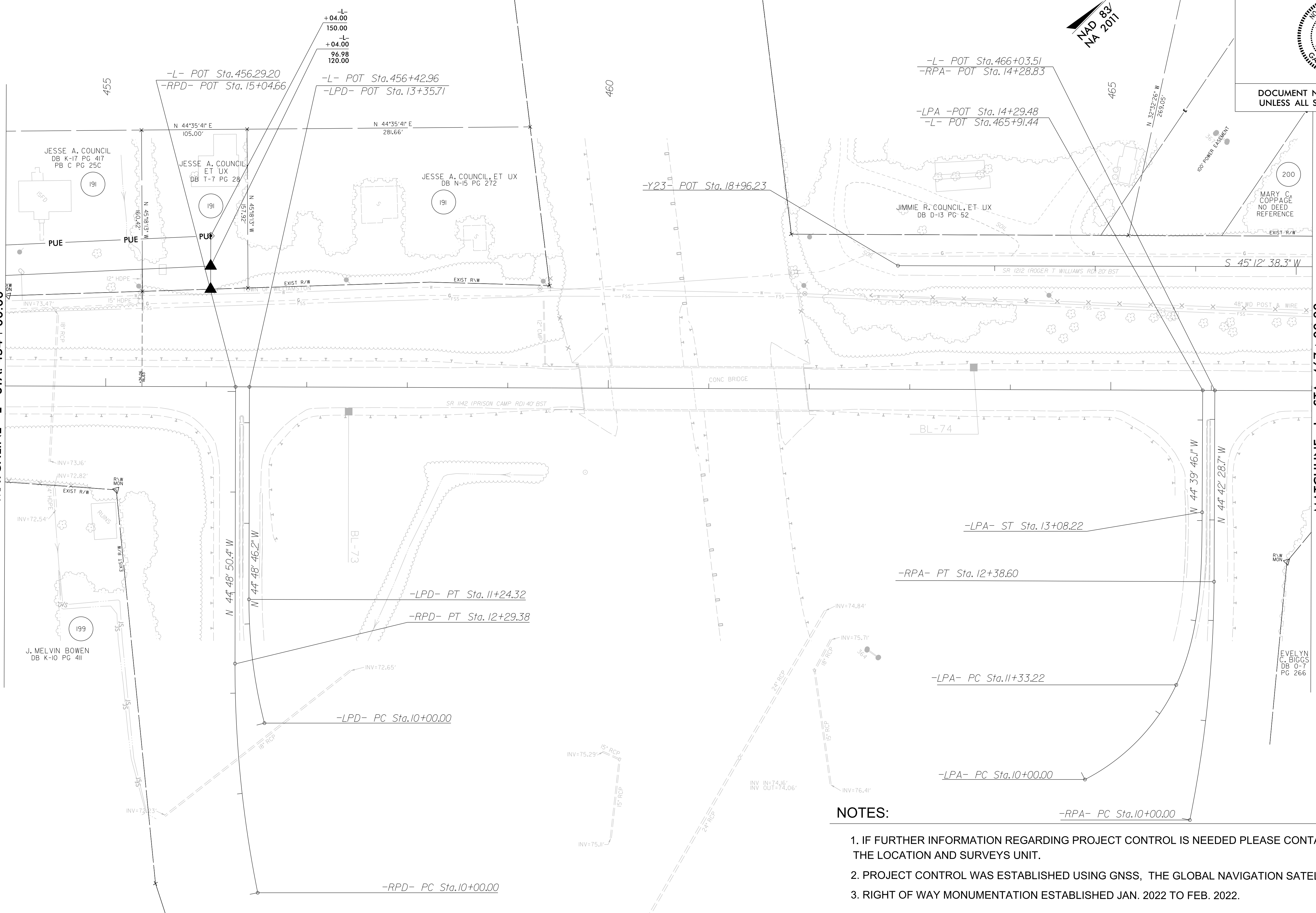
GARRY MOORE
Professional Land Surveyor L-2717

PROJECT REFERENCE NO. R-4705	SHEET NO. RW39
Location and Surveys	
<ul style="list-style-type: none"> New Bern, North Carolina 28562 Phone: (252) 631-5115 Middlesboro, Kentucky 40965 Phone: (606) 248-6660 Asheville, North Carolina 28806 Phone: (828) 253-2798 Charlotte, North Carolina 28217 Phone: (704) 397-0498 	
	
PROJECT SURVEYOR 	
DOCUMENT NOT CONSIDERED FINAL UNLESS ALL SIGNATURES COMPLETED	

REVISIONS

SEE SHEET RW38
MATCHLINE -L- STA. 454+00.00

MATCHLINE -L- STA. 467+00.00
SEE SHEET RW40



NOTES:

1. IF FURTHER INFORMATION REGARDING PROJECT CONTROL IS NEEDED PLEASE CONTACT THE LOCATION AND SURVEYS UNIT.
2. PROJECT CONTROL WAS ESTABLISHED USING GNSS, THE GLOBAL NAVIGATION SATELLITE SYSTEM.
3. RIGHT OF WAY MONUMENTATION ESTABLISHED JAN. 2022 TO FEB. 2022.

DE: MAY 2022 16:28
 CS: 2022 09:00
 AT: RVA191071
 J:\lemmons
 Ro:\CADD\Surveys\R4705\DN\N-4705_1.s_r.w39.dgn