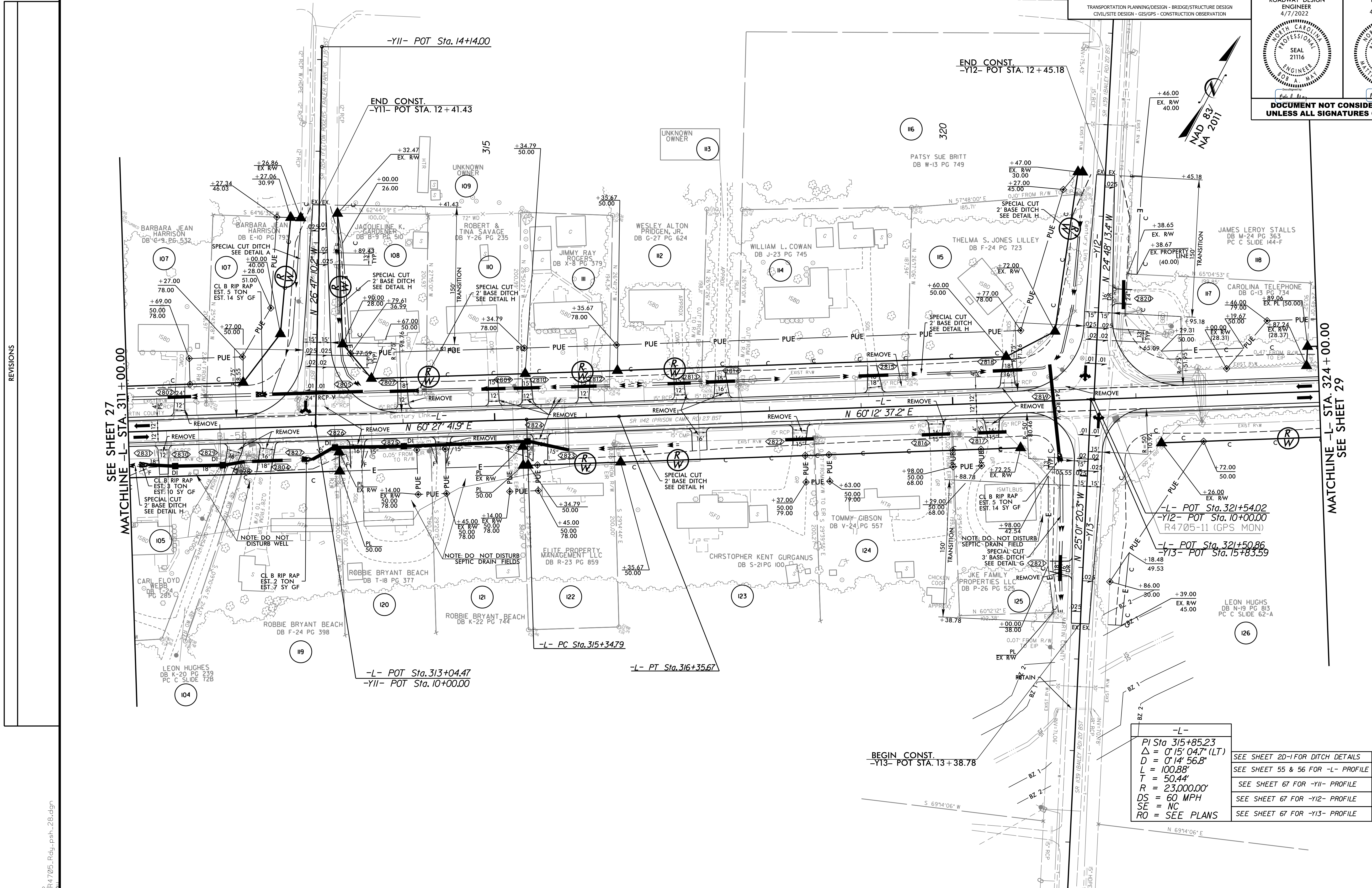
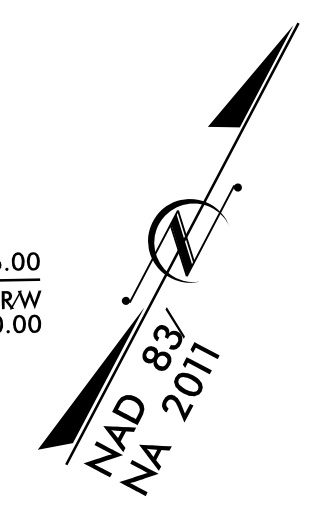


**WETHERILL ENGINEERING**  
 1223 Jones Franklin Rd.  
 Raleigh, N.C. 27606  
 License No. F-0377  
 Bus: 919 851 8077  
 Fax: 919 851 8107

TRANSPORTATION ENGINEERING/DESIGN - BRIDGE/STRUCTURE DESIGN  
 CIVIL/SITE DESIGN - GIS/GPS - CONSTRUCTION OBSERVATION

PROJECT REFERENCE NO. <b>R-4705</b>	SHEET NO. <b>28</b>
RW SHEET NO.	HYDRAULICS ENGINEER 4/7/2022
ROADWAY DESIGN ENGINEER 4/7/2022	SEAL 21116 ENGINEER BOB A. MAY
	SEAL 053425 ENGINEER WILLIAM L. HAREY

**DOCUMENT NOT CONSIDERED FINAL  
UNLESS ALL SIGNATURES COMPLETED**



SEE SHEET 27  
MATCHLINE -L- STA 311 + 00.00

MATCHLINE -L- STA 324 + 00.00  
SEE SHEET 29

REVISIONS

BEGIN CONST.  
-Y13- POT STA. 13 + 38.78

-L-	SEE SHEET 2D-1 FOR DITCH DETAILS
PI Sta 315+85.23	SEE SHEET 55 & 56 FOR -L- PROFILE
$\Delta = 0' 15' 04.7''$ (LT)	SEE SHEET 67 FOR -Y11- PROFILE
$D = 0' 14' 56.8''$	SEE SHEET 67 FOR -Y12- PROFILE
$L = 100.88'$	SEE SHEET 67 FOR -Y13- PROFILE
$T = 50.44'$	
$R = 23,000.00'$	
$DS = 60$ MPH	
$SE = NC$	
$RO = SEE PLANS$	