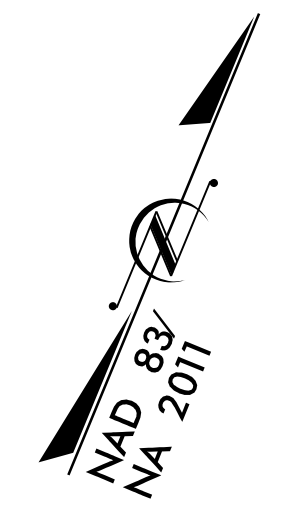
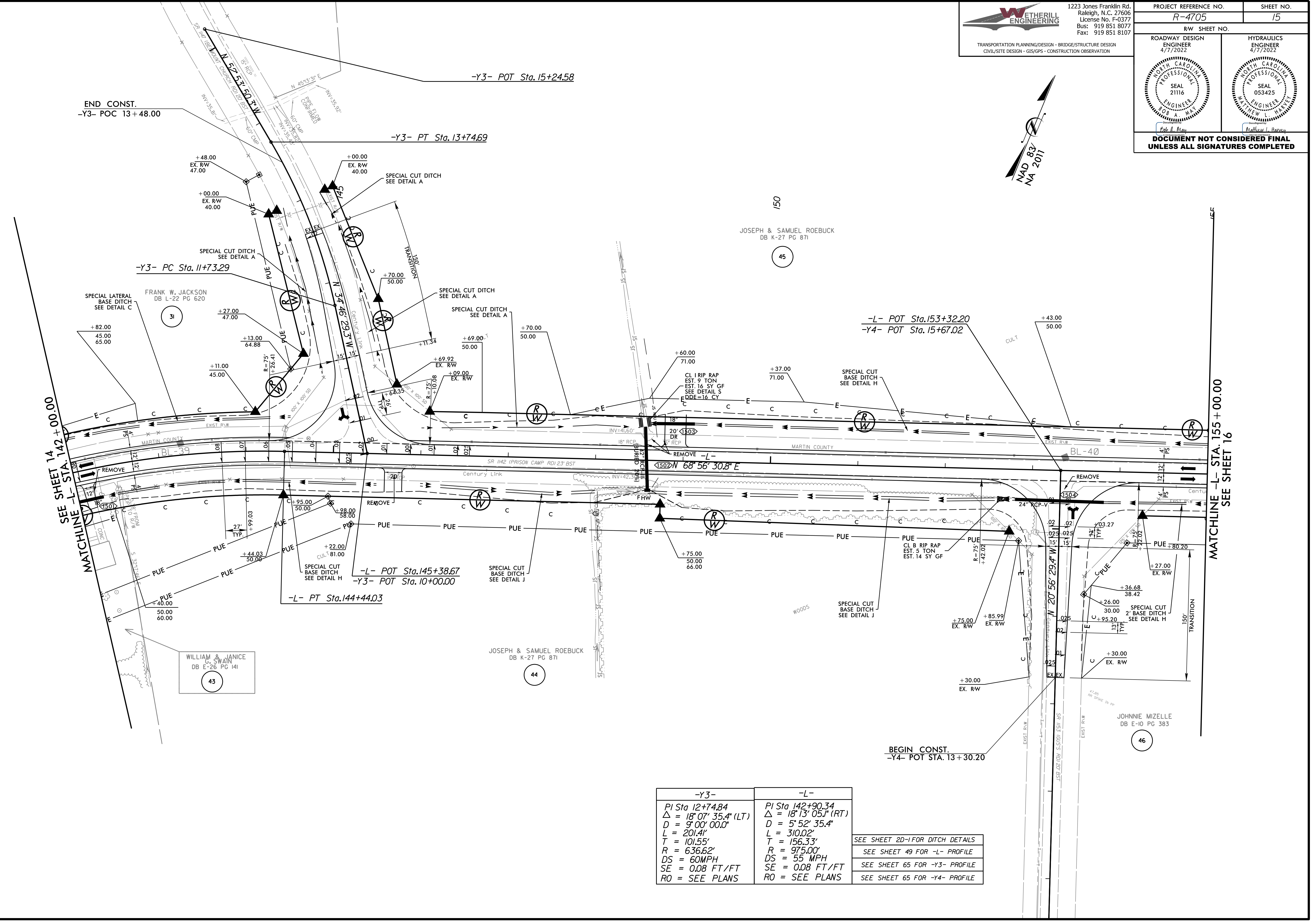


PROJECT REFERENCE NO. R-4705	SHEET NO. 15
R/W SHEET NO.	HYDRAULICS ENGINEER 4/7/2022
ROADWAY DESIGN ENGINEER 4/7/2022	SEAL 21116 ENGINEER BOB A. WAY
	SEAL 053425 ENGINEER MATTHEW L. HAREY
DOCUMENT NOT CONSIDERED FINAL UNLESS ALL SIGNATURES COMPLETED	



8/17/99

REVISIONS



SEE SHEET 14
 MATCHLINE -L- STA. 142+00.00

MATCHLINE -L- STA. 155+00.00
 SEE SHEET 16

-Y3-	-L-
PI Sta 12+74.84	PI Sta 142+90.34
$\Delta = 18^{\circ} 07' 35.4''$ (LT)	$\Delta = 18^{\circ} 13' 05.1''$ (RT)
$D = 9^{\circ} 00' 00.0''$	$D = 5^{\circ} 52' 35.4''$
$L = 201.4'$	$L = 310.02'$
$T = 101.55'$	$T = 156.33'$
$R = 636.62'$	$R = 975.00'$
$DS = 60$ MPH	$DS = 55$ MPH
$SE = 0.08$ FT/FT	$SE = 0.08$ FT/FT
$RO =$ SEE PLANS	$RO =$ SEE PLANS

SEE SHEET 2D-1 FOR DITCH DETAILS
 SEE SHEET 49 FOR -L- PROFILE
 SEE SHEET 65 FOR -Y3- PROFILE
 SEE SHEET 65 FOR -Y4- PROFILE

3/7/2022 R4705_Rdy_psh_15.dgn
 TSE/RS