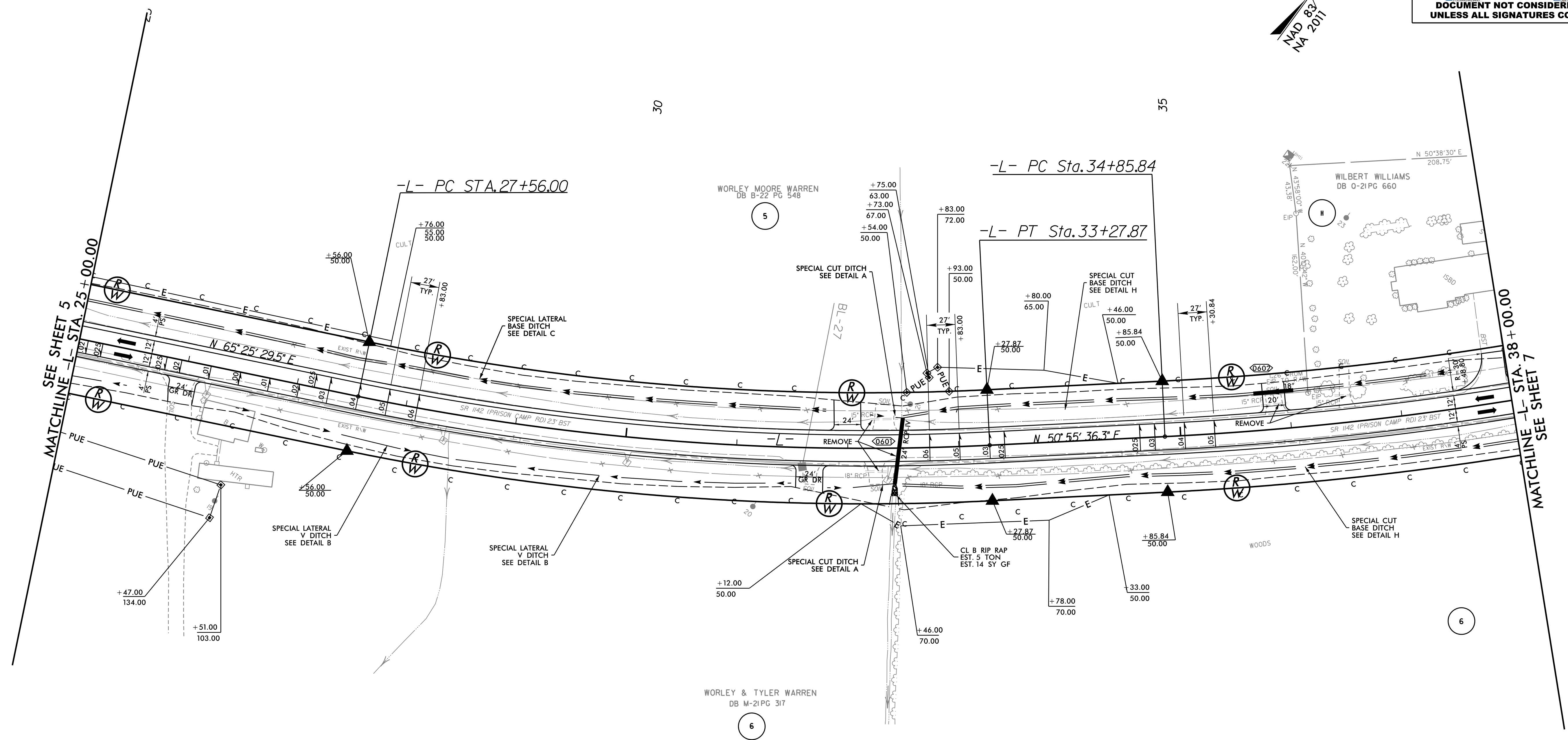


REVISIONS



-L-	
PI Sta 30+43.47	PI Sta 37+48.09
$\Delta = 14^{\circ} 29' 53.2''$ (LT)	$\Delta = 10^{\circ} 26' 30.0''$ (LT)
$D = 2^{\circ} 32' 06.8''$	$D = 1^{\circ} 59' 46.9''$
$L = 571.87'$	$L = 523.03'$
$T = 287.47'$	$T = 262.24'$
$R = 2,260.00'$	$R = 2,870.00'$
$DS = 60$ MPH	$DS = 60$ MPH
$SE = 0.06$ FT/FT	$SE = 0.05$ FT/FT
$RO =$ SEE PLANS	$RO =$ SEE PLANS

SEE SHEET 2D-1 FOR DITCH DETAILS
 SEE SHEET 44 & 45 FOR -L- PROFILE