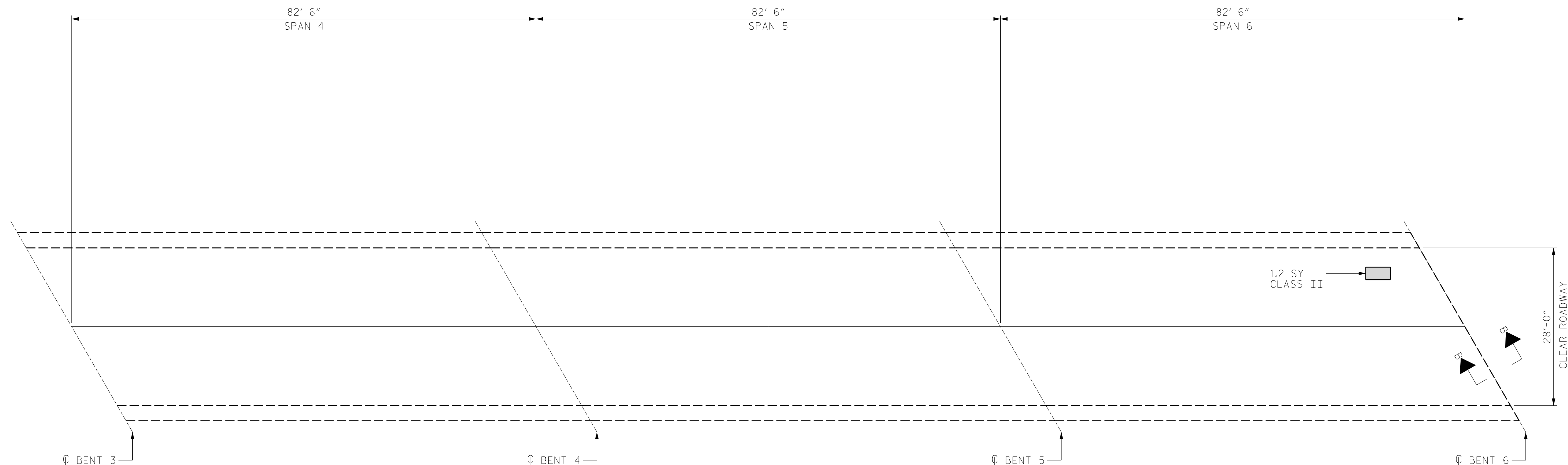
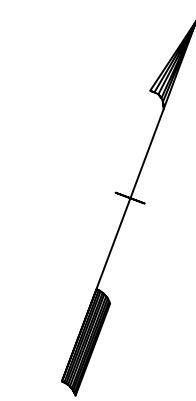


AS-BUILT REPAIR QUANTITY TABLE

DECK REPAIRS

	SPAN 4		SPAN 5		SPAN 6	
	ESTIMATE	ACTUAL	ESTIMATE	ACTUAL	ESTIMATE	ACTUAL
CLASS II SURFACE PREPARATION	-- SY		-- SY		1.2 SY	
CLASS III SURFACE PREPARATION	-- SY		-- SY		-- SY	
SHOTBLASTING BRIDGE DECK	257 SY		257 SY		257 SY	
SILANE DECK TREATMENT	257 SY		257 SY		257 SY	
ASPHALT CONCRETE SURFACE COURSE, TYPE S9.5C	29 TONS		29 TONS		29 TONS	
ASPHALT BINDER FOR PLANT MIX	1.8 TONS		1.8 TONS		1.8 TONS	



PARTIAL PLAN

NOTES:

PRIOR TO SURFACE PREPARATION, REMOVE ALL LOOSE, DISINTEGRATED, UNSOUND OR CONTAMINATED CONCRETE FROM THE BRIDGE DECK.

BRIDGE DECK SHOTBLASTING AND SILANE SEAL TREATMENT LIMITS ARE THE FULL CLEAR ROADWAY WIDTH (INSIDE FACE OF EACH BRIDGE RAIL).

FOR CONCRETE FOR DECK REPAIR, SEE SPECIAL PROVISIONS.

FOR SILANE DECK TREATMENT AND SHOTBLASTING BRIDGE DECK, SEE SPECIAL PROVISIONS.

WORK THIS SHEET WITH "JOINT DETAILS" SHEET.

WORK THIS SHEET WITH "TYPICAL SECTION" SHEET.

FOR NEW ASPHALT PLACEMENT, SEE STANDARD SPECIFICATIONS.

REPAIR LOCATIONS AND ESTIMATED QUANTITIES ARE GIVEN WITH THE BEST INFORMATION AVAILABLE. IF ADDITIONAL REPAIRS NOT SHOWN ON THE DRAWINGS ARE DEEMED NECESSARY BY THE ENGINEER, THE ENGINEER WILL NOTE ON THE DRAWINGS THE APPROXIMATE LOCATIONS AND DESCRIPTION OF THE REPAIRS AND ADJUST THE ACTUAL QUANTITIES ENTERED INTO THE AS-BUILT REPAIR QUANTITY TABLE.

ASPHALT CONCRETE SURFACE COURSE, TYPE S9.5C
SILANE SEAL DECK TREATMENT

DEFECTS (SEE PLAN CALLOUT FOR DETAILS)

DRAWN BY : ALLEN J. MCSWAIN DATE : 01/2022
 CHECKED BY : JACOB H. DUKE DATE : 01/2022
 DESIGN ENGINEER OF RECORD: DIEGO A. AGUIRRE DATE : 01/2022



PROJECT NO. I-5915B
IREDELL COUNTY
 BRIDGE NO. 480007

SHEET 2 OF 4



STATE OF NORTH CAROLINA
 DEPARTMENT OF TRANSPORTATION
 RALEIGH

PLAN OF SPANS DECK REPAIRS

DOCUMENT NOT CONSIDERED FINAL UNLESS ALL SIGNATURES COMPLETED

REVISIONS						SHEET NO.
NO.	BY:	DATE:	NO.	BY:	DATE:	
1			3			S6-4
2			4			TOTAL SHEETS 24