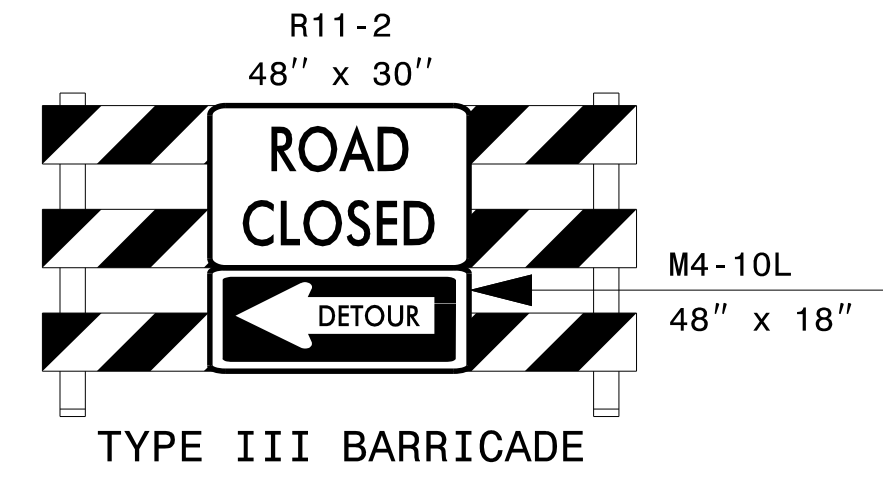
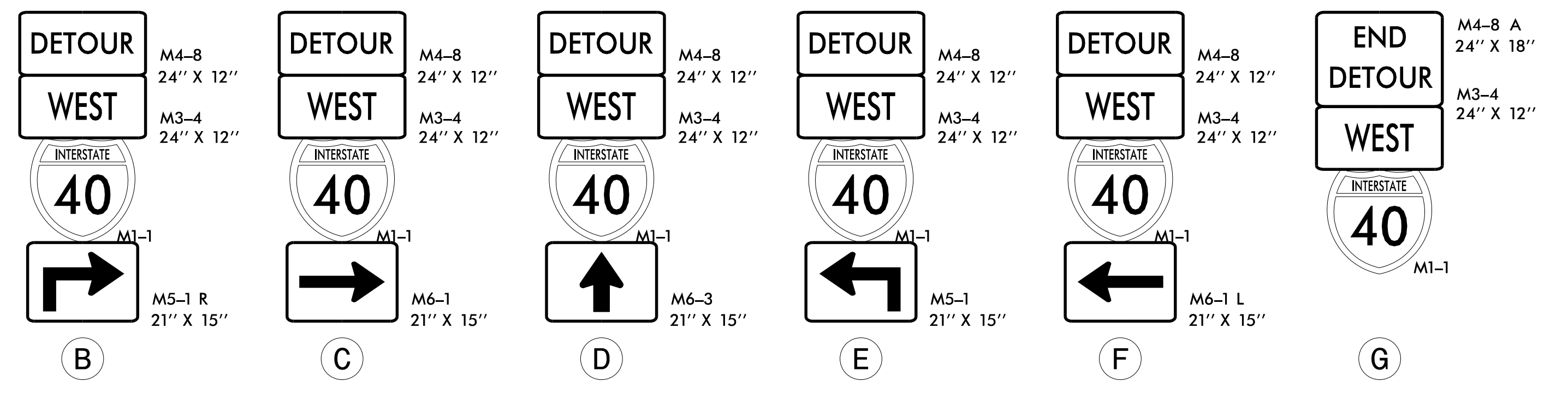


DETOUR DESCRIPTION:

WESTBOUND: I-40 WB EXIT 144 TO SR 1005 (OLD MOUNTAIN RD) TO US 70 (HICKORY HWY) TO SR 1502 (SHARON SCHOOL RD) TO I-40 WB.

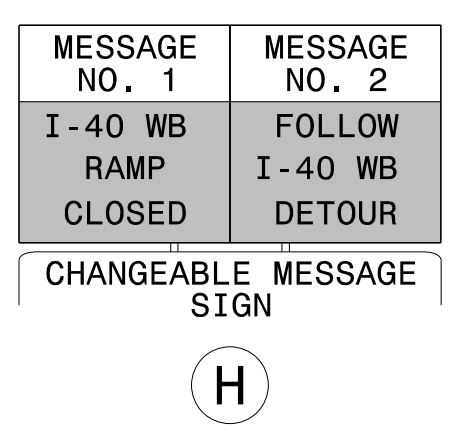


TYPE III BARRICADE



NOTES:

1. TRAFFIC CONTROL DEVICES (A) THRU (H) SHALL BE INSTALLED PER ENGINEER'S INSTRUCTIONS.
2. USE THIS DRAWING IN CONJUNCTION WITH RSD 1101.03 SHEET 7 OF 9, TMP-34, AND TMP-35.
3. ALL SIGN SPACING IS 350' UNLESS OTHERWISE NOTED.

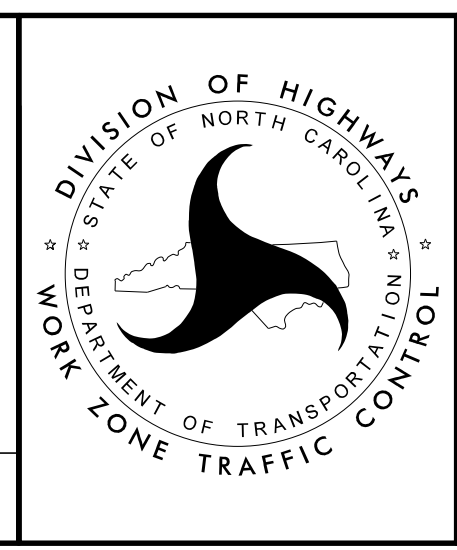


(H)

APPROVED: *Jacob Duke*
DATE: 4/26/2022

SEAL

DOCUMENT NOT CONSIDERED FINAL UNLESS ALL SIGNATURES COMPLETED



I40 WB OFFSITE DETOUR

4/26/2022 15915B_TC_TMP_DETOUR_I40_WB.dgn User:idebone