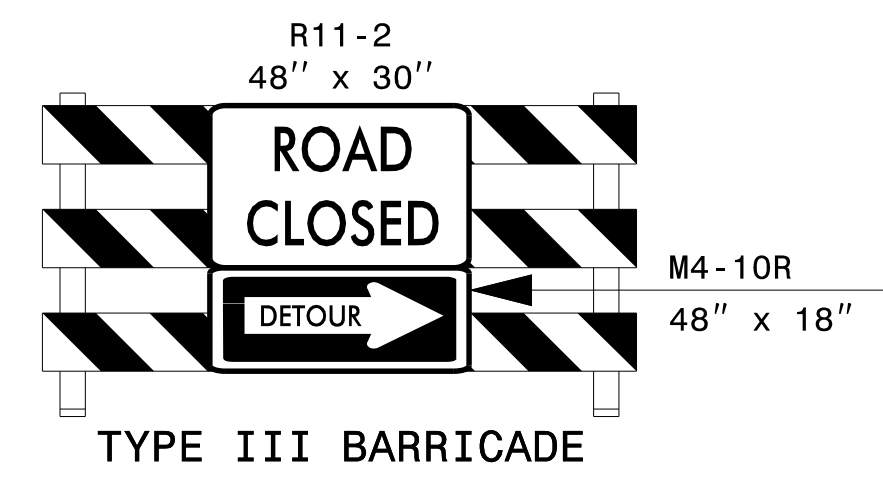


** PLACE PCMS 1 MILE PRIOR TO INTERCHANGE

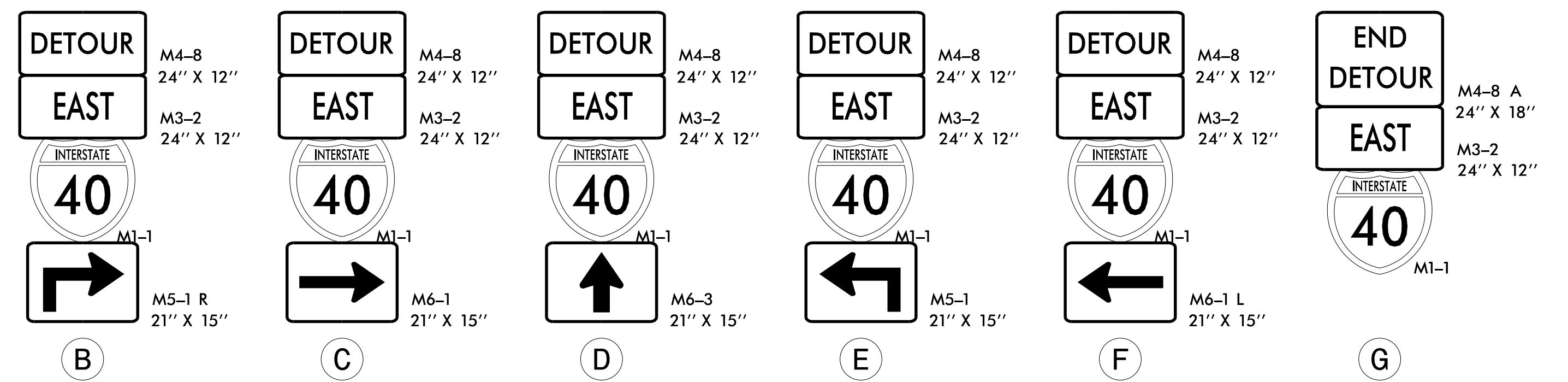
** PLACE PCMS 1 MILE PRIOR TO INTERSECTION WITH SHARON SCHOOL RD

DETOUR DESCRIPTION:

EASTBOUND: I-40 EB EXIT 141 TO SR 1502 (SHARON SCHOOL RD) TO US 70 (HICKORY HWY) TO SR 1005 (OLD MOUNTAIN RD) TO I-40 EB.



(A)



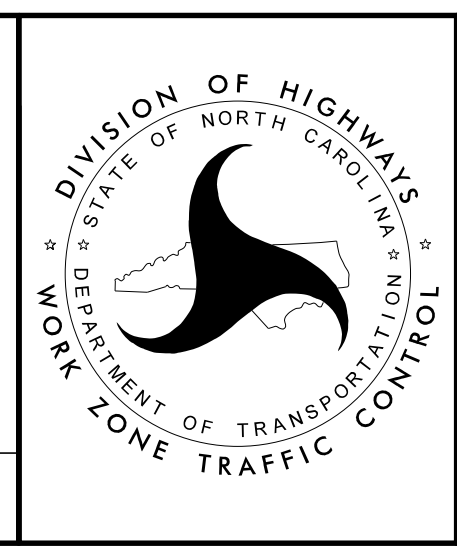
MESSAGE NO. 1	MESSAGE NO. 2
I-40 EB RAMP CLOSED	FOLLOW I-40 EB DETOUR
CHANGEABLE MESSAGE SIGN	

(H)

NOTES:

- TRAFFIC CONTROL DEVICES (A) THRU (H) SHALL BE INSTALLED PER ENGINEER'S INSTRUCTIONS.
- USE THIS DRAWING IN CONJUNCTION WITH RSD 1101.03 SHEET 7 OF 9, TMP-31, AND TMP-32.
- ALL SIGN SPACING IS 350' EXCEPT FOR (D) WHICH ARE APPROXIMATELY 1 MILE, UNLESS OTHERWISE NOTED.

APPROVED: *Jacob Duke*
 DATE: 4/26/2022
 SEAL
 DOCUMENT NOT CONSIDERED FINAL UNLESS ALL SIGNATURES COMPLETED



DIVISION OF HIGHWAYS
 NORTH CAROLINA
 DEPARTMENT OF TRANSPORTATION
 WORK ZONE TRAFFIC CONTROL
 I40 EB OFFSITE DETOUR

4/26/2022 15915B_TC_TMP_DETOUR_I40_EB.dgn User:idebone