

**TRAFFIC CONTROL DEVICES**

- R) WHEN LANE CLOSURES ARE NOT IN EFFECT SPACE CHANNELIZING DEVICES IN WORK AREAS NO GREATER IN FEET THAN TWICE THE POSTED SPEED LIMIT (MPH) EXCEPT, 10 FT ON-CENTER IN RADII, AND 3 FT OFF THE EDGE OF AN OPEN TRAVELWAY. REFER TO STANDARD SPECIFICATIONS FOR ROADS AND STRUCTURES SECTIONS 1130 (DRUMS), 1135 (CONES) AND 1180 (SKINNY DRUMS) FOR ADDITIONAL REQUIREMENTS.
- S) PLACE TYPE III BARRICADES, WITH "ROAD CLOSED" SIGN R11-2 ATTACHED, OF SUFFICIENT LENGTH TO CLOSE ENTIRE ROADWAY.
- T) PLACE ADDITIONAL SETS OF THREE CHANNELIZING DEVICES DRUMS PERPENDICULAR TO THE EDGE OF TRAVELWAY ON 500 FT CENTERS WHEN UNOPENED LANES ARE CLOSED TO TRAFFIC.

**PERFORMANCE MARKINGS AND MARKERS**

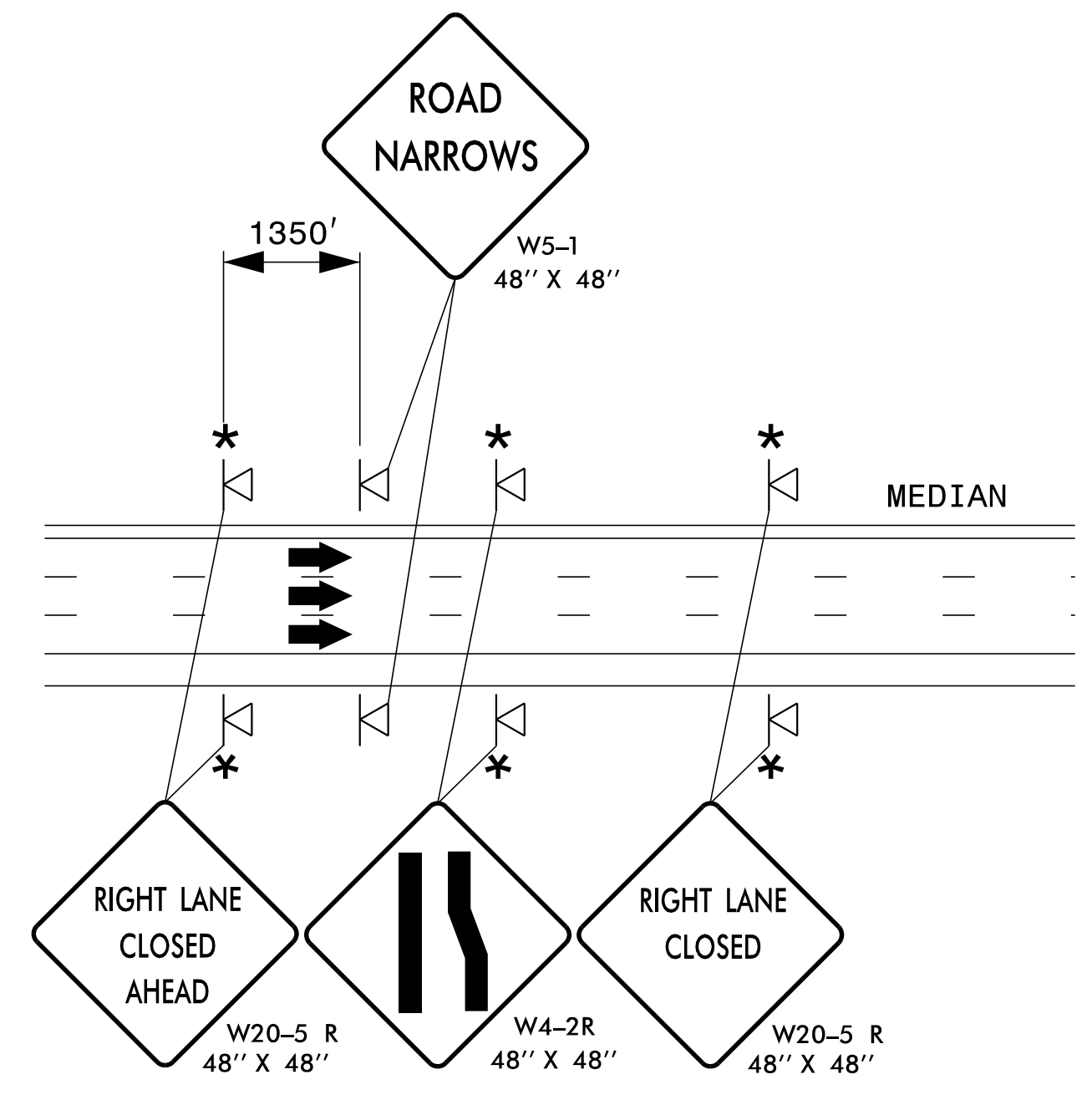
- U) INSTALL TEMPORARY PAVEMENT MARKINGS AND TEMPORARY PAVEMENT MARKERS ON INTERIM LAYERS OF PAVEMENT AS FOLLOWS:

ROAD NAME	MARKING	MARKER
I40 -ASPHALT	POLYUREA	NONE
I40 -BRIDGE SURFACES	COLD APPLIED PLASTIC (TYPEIV)	NONE

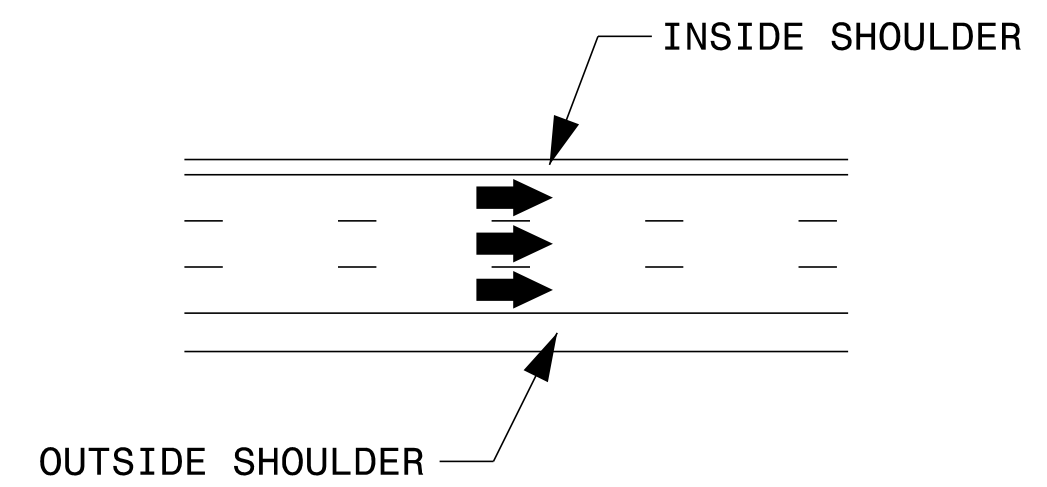
- V) PLACE TWO APPLICATION OF PAINT FOR TEMPORARY TRAFFIC PATTERNS. PLACE A THIRD APPLICATION OF PAINT SIX (6) MONTHS AFTER THE INITIAL APPLICATION AND EVERY SIX MONTHS AS DIRECTED BY THE ENGINEER.
- W) TIE PROPOSED PAVEMENT MARKING LINES TO EXISTING PAVEMENT MARKING LINES.
- X) REMOVE/REPLACE ANY CONFLICTING/DAMAGED PAVEMENT MARKINGS BY THE END OF EACH DAY'S OPERATION.

**MISCELLANEOUS**

- Y) LAW ENFORCEMENT SHALL BE USED TO MAINTAIN TRAFFIC THROUGH THE WORK AREA AND/OR INTERSECTIONS AS DIRECTED BY THE ENGINEER.
- Z) HIGH VISIBILITY DEVICES ARE TO BE USED AT ALL LOCATIONS THROUGHOUT THE PROJECT.
- AA) THE CONTRACTOR SHALL NOTIFY THE STATE HIGHWAY PATROL OFFICE A MINIMUM OF THIRTY (30) CALENDAR DAYS PRIOR TO ANY CLOSURE OF THE WEIGH STATIONS.



**ROAD NARROWS SIGN PLACEMENT**  
 \* PLACED PER RSD 1101.02 SHEET 4 OF 14  
 MIRROR FOR LEFT LANE CLOSURE  
 USE THIS DETAIL WHEN NARROWING LANES ALONG I40.



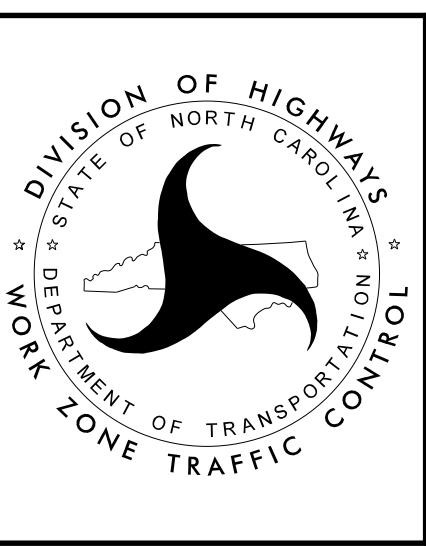
**SHOULDER DIAGRAM**

4/26/2022 15915B\_TC\_TMP\_GENERAL\_NOTES.dgn User:idebone

APPROVED: *Jacob Duke*  
 DATE: 4/26/2022

SEAL

DOCUMENT NOT CONSIDERED FINAL UNLESS ALL SIGNATURES COMPLETED



GENERAL NOTES  
 (2 OF 2)