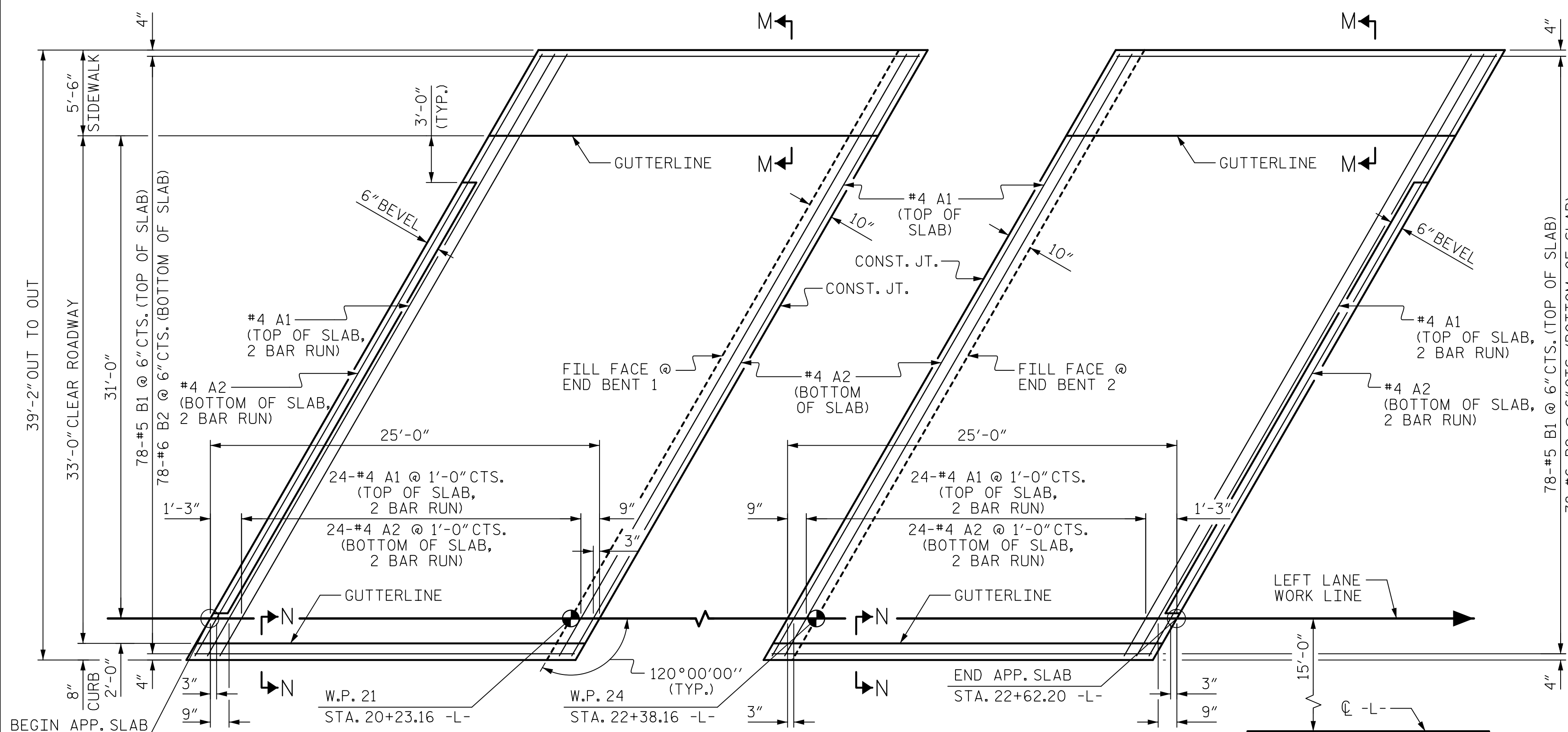
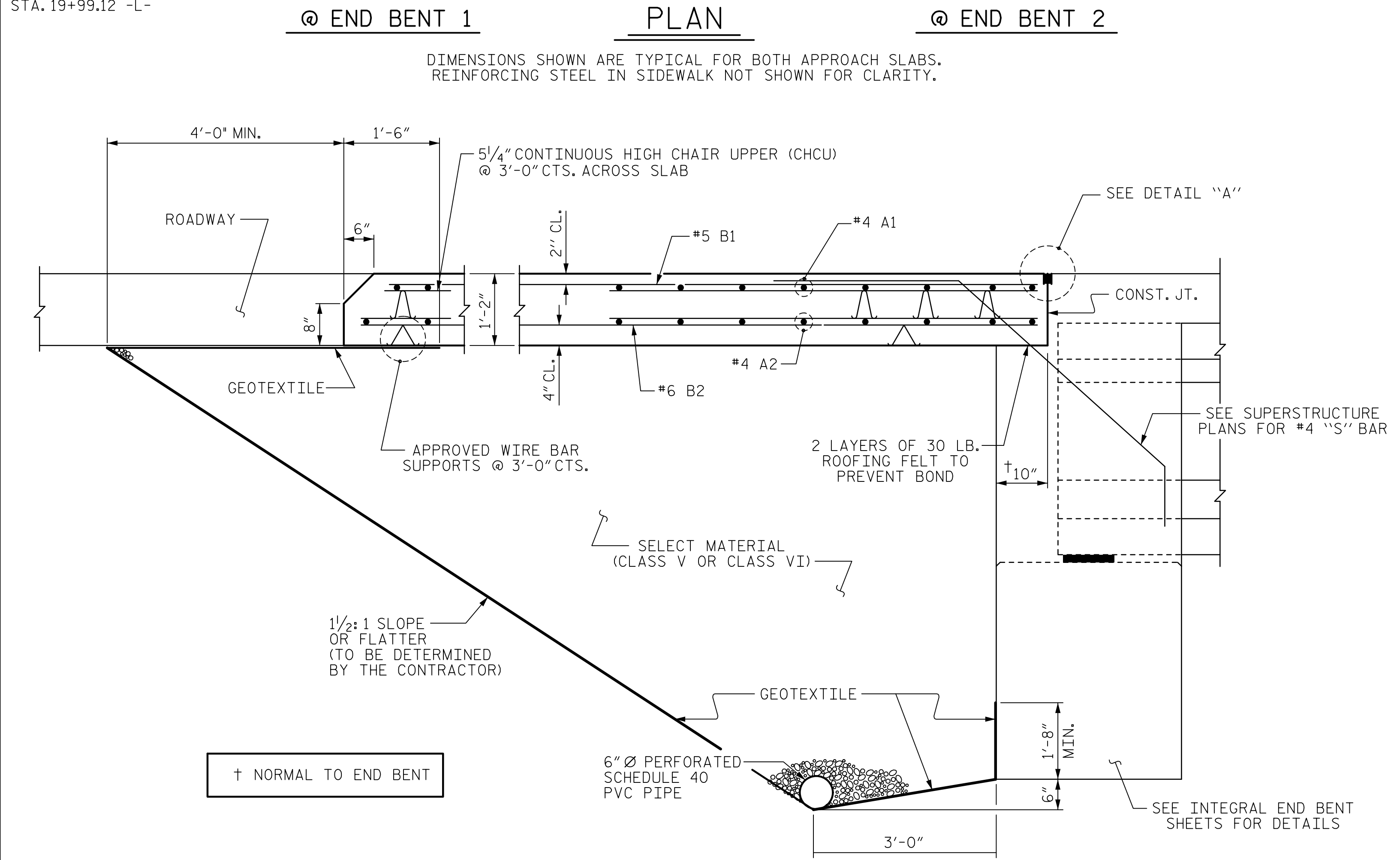


DATE: 4/13/2022  
TIME: 12:40:09 PM

USER: pncproj.ctb  
DN: pncproj.ctb  
FILE: \\pncproj.ctb  
C:\Users\pncproj.ctb\Documents\60598287-NCDDT\_SMU\_B-5717\BID\Drawings\04\_Structures\04\_Drawings\02\_073\_B-5717\_SMU\_BAS1\_S2-37\_4001.dgn



**PLAN**  
DIMENSIONS SHOWN ARE TYPICAL FOR BOTH APPROACH SLABS.  
REINFORCING STEEL IN SIDEWALK NOT SHOWN FOR CLARITY.



**SECTION THRU SLAB**  
(TYPE I - STANDARD APPROACH FILL)

**NOTES**

APPROACH SLAB SHALL NOT BE CONSTRUCTED PRIOR TO COMPLETION OF THE BRIDGE DECK.

FOR BRIDGE APPROACH FILL INCLUDING GEOTEXTILE, 6" Ø DRAINAGE PIPE, AND SELECT MATERIAL, SEE ROADWAY PLANS.

GEOTEXTILE SHALL BE TYPE 1 IN ACCORDANCE WITH THE STANDARD SPECIFICATIONS SECTION 1056.

SELECT MATERIAL BACKFILL (CLASS V OR CLASS VI) SHALL BE IN ACCORDANCE WITH STANDARD SPECIFICATIONS SECTION 1016.

SELECT MATERIAL BACKFILL IS TO BE CONTINUOUS ALONG FILL FACE OF BACKWALL FROM OUTSIDE EDGE TO OUTSIDE EDGE OF APPROACH SLAB.

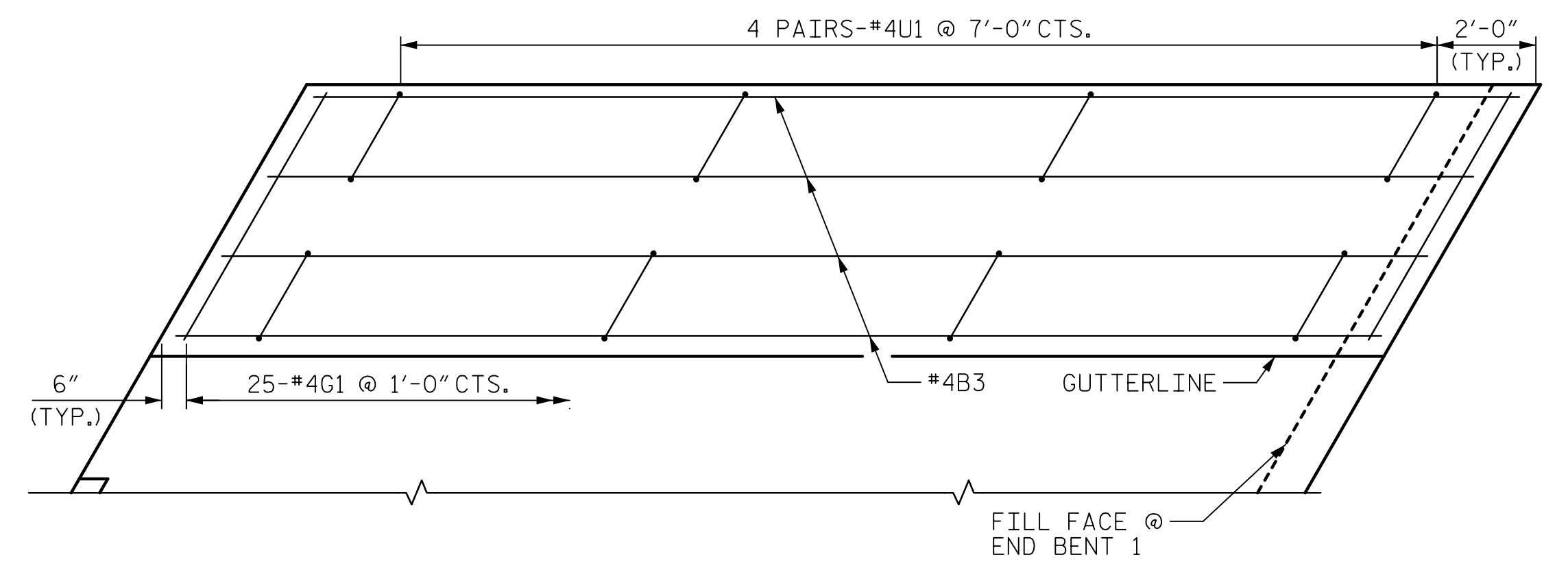
FOR THE 6" Ø DRAINAGE PIPE OUTLET(S), SEE ROADWAY STANDARD DRAWINGS.

AREA BETWEEN THE WINGWALL AND APPROACH SLAB SHALL BE GRADED TO DRAIN THE WATER AWAY FROM THE FILL FACE OF THE BRIDGE AND SHALL BE PAVED. SEE ROADWAY PLANS.

THE JOINT OPENING AT THE APPROACH SLAB/DECK INTERFACE SHALL BE SAWED NO MORE THAN 12 HOURS AFTER THE APPROACH SLAB IS CAST. THE JOINT SHALL BE CLEANED OF ALL DEBRIS BEFORE THE SEALANT IS APPLIED. THE JOINT SEALER MATERIAL SHALL CONFORM TO THE REQUIREMENTS OF SECTION 1028-3 OF THE STANDARD SPECIFICATIONS.

AT THE CONTRACTOR'S OPTION, "TYPE A - ALTERNATE APPROACH FILL" IN LIEU OF "TYPE I - STANDARD APPROACH FILL" MAY BE CONSTRUCTED AT NO ADDITIONAL COST TO THE DEPARTMENT. SEE SHEET 2 OF 2 FOR DETAILS AND NOTES.

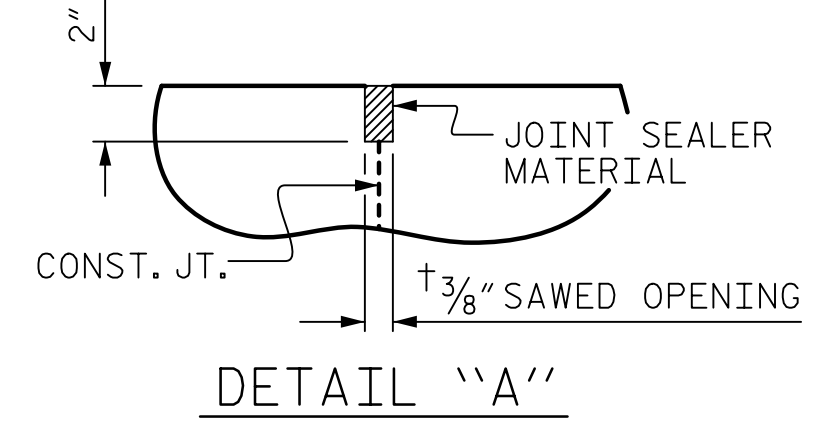
BILL OF MATERIAL					
FOR ONE APPROACH SLAB (2 REQ'D)					
BAR	NO.	SIZE	TYPE	LENGTH	WEIGHT
* A1	52	#4	STR	23'-5"	813
A2	52	#4	STR	23'-3"	808
* B1	78	#5	STR	24'-0"	1952
B2	78	#6	STR	24'-7"	2880
* B3	4	#4	STR	24'-7"	66
* G1	25	#4	STR	5'-8"	95
* U1	8	#4	1	3'-0"	16
REINFORCING STEEL					LBS. 3,688
* EPOXY COATED REINFORCING STEEL					LBS. 2,942
CLASS AA CONCRETE					
SLAB					C. Y. 42.3
SIDEWALK					C. Y. 3.1
TOTAL					C. Y. 45.4
BAR TYPES					
ALL BAR DIMENSIONS ARE OUT TO OUT.					



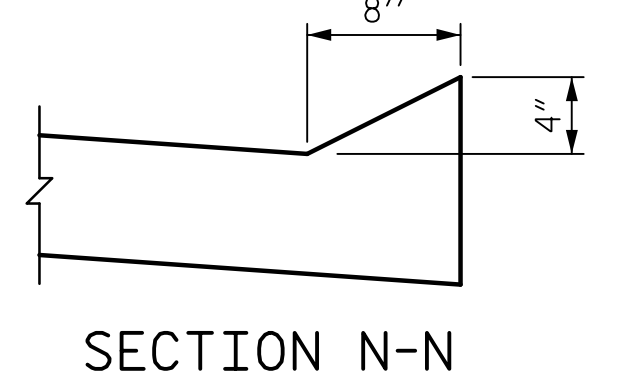
**PLAN OF SIDEWALK**

END BENT 1 SIDE SHOWN, END BENT 2 SIDE SIMILAR BY MIRRORING.

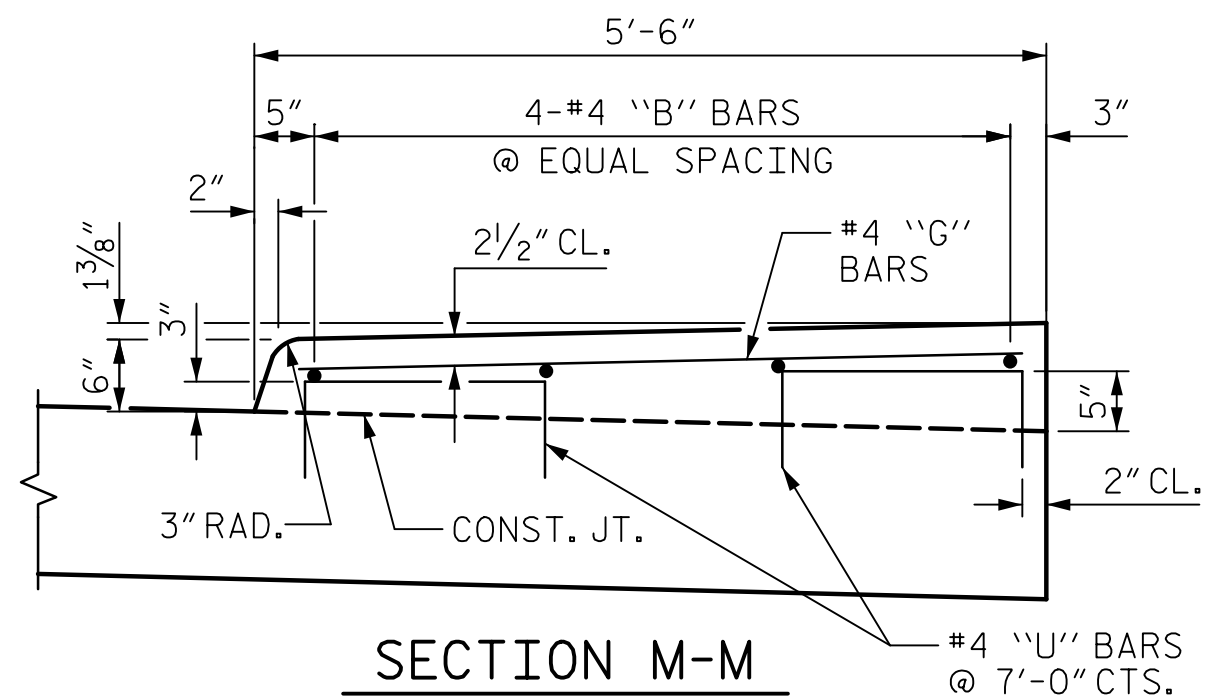
SPLICE LENGTHS		
BAR SIZE	EPOXY COATED	UNCOATED
#4	1'-11"	1'-7"
#5	2'-5"	2'-0"
#6	3'-7"	2'-5"



**DETAIL "A"**



**SECTION N-N**



**SECTION M-M**

PROJECT NO. **B-5717**  
**GUILFORD** COUNTY  
 STATION: **21+22.00 -L-**

SHEET 1 OF 2



STATE OF NORTH CAROLINA  
 DEPARTMENT OF TRANSPORTATION  
 RALEIGH

STANDARD  
 BRIDGE APPROACH SLAB FOR  
 INTEGRAL ABUTMENT WITH  
 FLEXIBLE PAVEMENT

**(LEFT LANE)**

REVISIONS					
NO.	BY:	DATE:	NO.	BY:	DATE:
1			3		
2			4		

SHEET NO. **S2-37**  
TOTAL SHEETS **38**

ASSEMBLED BY : D.R. DRUM	DATE : 07/2021
CHECKED BY : S. NATARAJAN	DATE : 10/2021
DRAWN BY : TLA 10/05	REV. 6/13 MAA/GM
CHECKED BY : GM 5/06	REV. 12/17 MAA/THC
	REV. 06/19 BNB/THC

DOCUMENT NOT CONSIDERED FINAL UNLESS ALL SIGNATURES COMPLETED