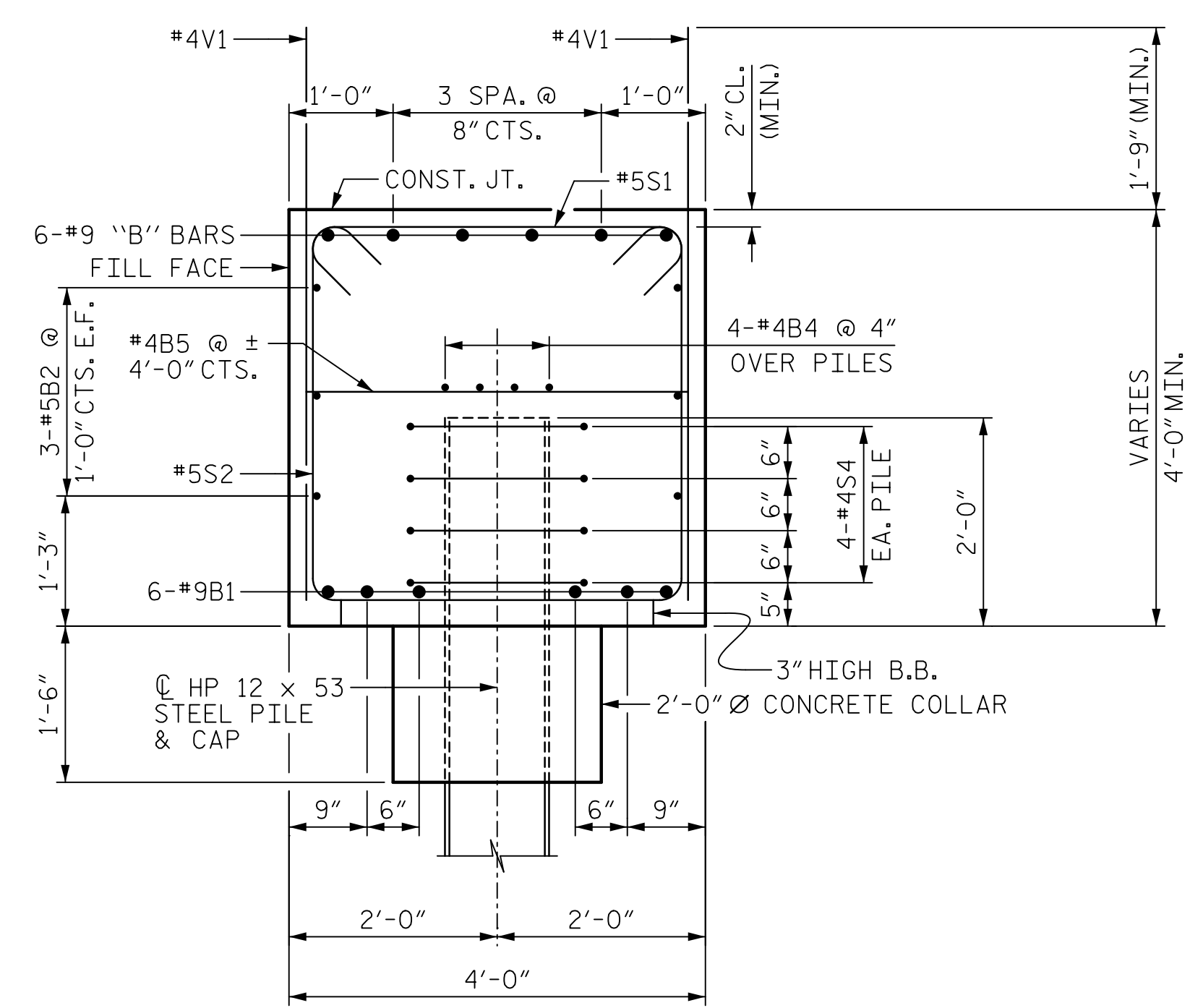
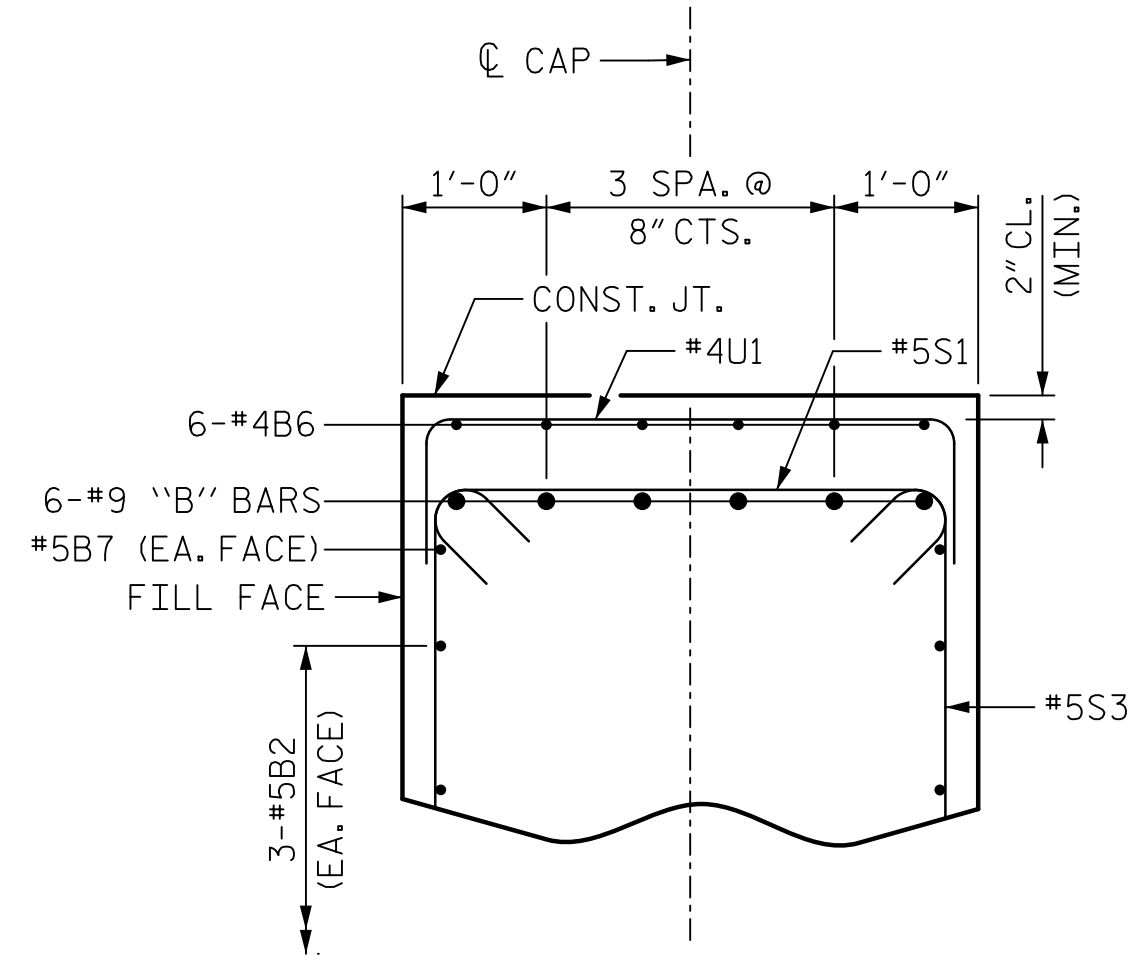


DATE: 6/9/2022
TIME: 11:36:47 AM

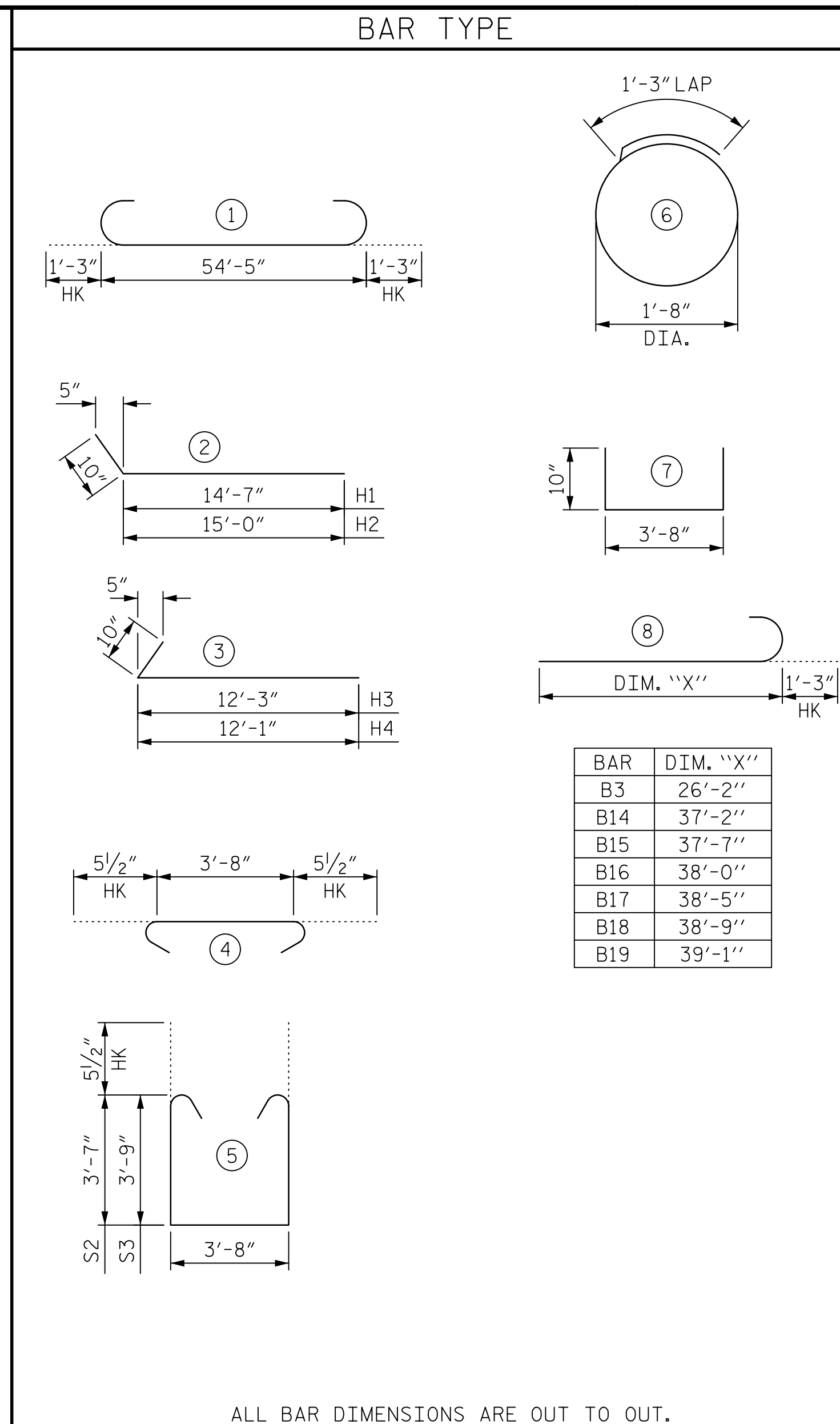
USER: greggpc@acis
DGN: P:\a\acisom-nr-pw\pww\pww\acisom\DS21\A_2020\Documents\60592827-NCDDT_SMU_B-5717\800-CAD_GIS\910_DAD\TO_NCDDT_TIP\Structures\04_Drawings\M02_069_B-5717_SMU_E.2003_S2-35_40012.dgn



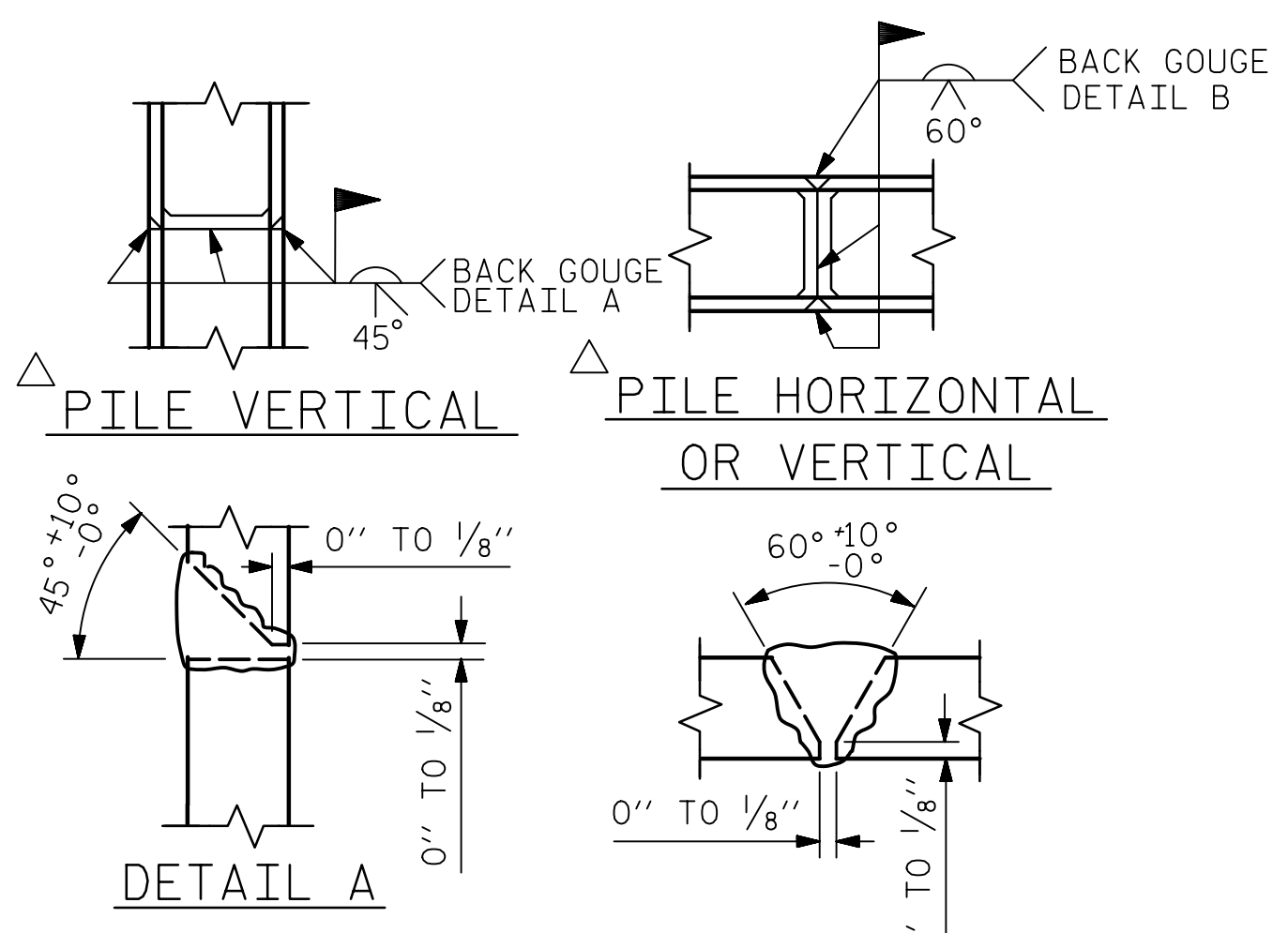
SECTION A-A



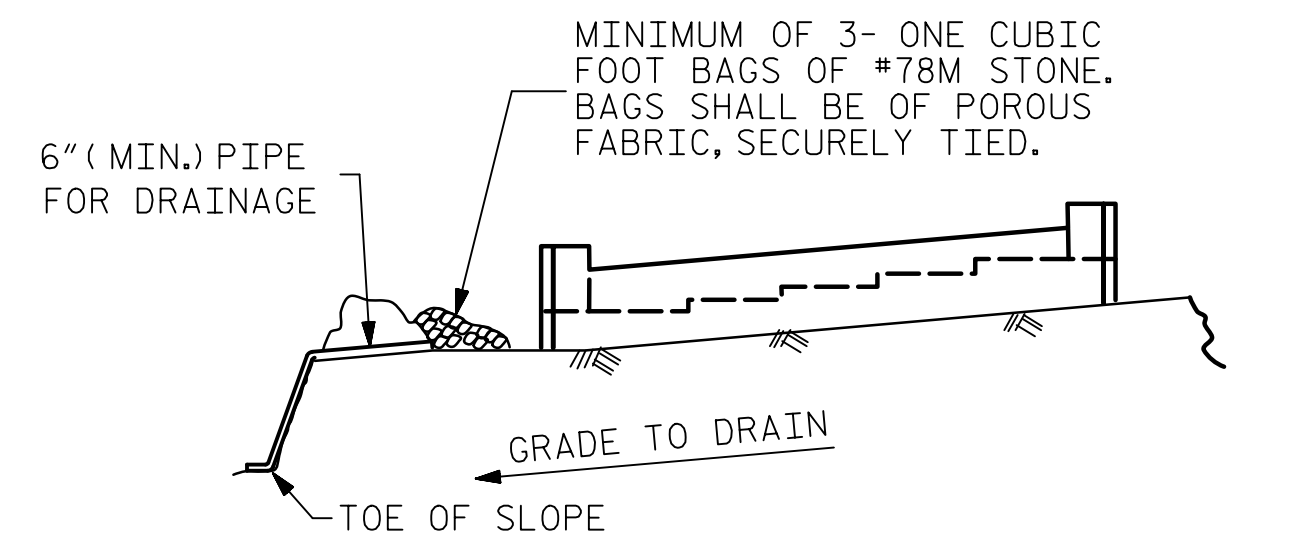
SECTION B-B



BILL OF MATERIAL					
INTEGRAL END BENT 2					
BAR	NO.	SIZE	TYPE	LENGTH	WEIGHT
B1	6	9	1	56'-11"	1161
B2	6	5	STR	54'-5"	341
B3	6	9	8	27'-5"	559
B4	8	4	STR	28'-6"	152
B5	14	4	STR	3'-8"	34
B6	6	4	STR	9'-11"	40
B7	2	5	STR	31'-5"	66
B8	1	4	STR	6'-11"	5
B9	1	4	STR	7'-4"	5
B10	1	4	STR	7'-9"	5
B11	1	4	STR	8'-2"	5
B12	1	4	STR	8'-6"	6
B13	1	4	STR	8'-10"	6
B14	1	9	8	38'-5"	131
B15	1	9	8	38'-10"	132
B16	1	9	8	39'-3"	133
B17	1	9	8	39'-8"	135
B18	1	9	8	40'-0"	136
B19	1	9	8	40'-4"	137
H1	13	6	2	15'-5"	301
H2	13	6	2	15'-10"	309
H3	12	6	3	13'-1"	236
H4	12	6	3	12'-11"	233
H5	16	6	STR	18'-1"	435
H6	20	6	STR	15'-7"	468
K1	26	4	STR	3'-1"	54
K2	24	4	STR	3'-0"	48
S1	62	5	4	4'-7"	296
S2	19	5	5	11'-9"	233
S3	43	5	5	12'-1"	542
S4	32	4	6	6'-6"	139
U1	12	4	7	5'-4"	43
V1	72	4	STR	6'-5"	309
V2	38	5	STR	9'-11"	393
V3	34	5	STR	10'-5"	369



PILE SPLICE DETAILS

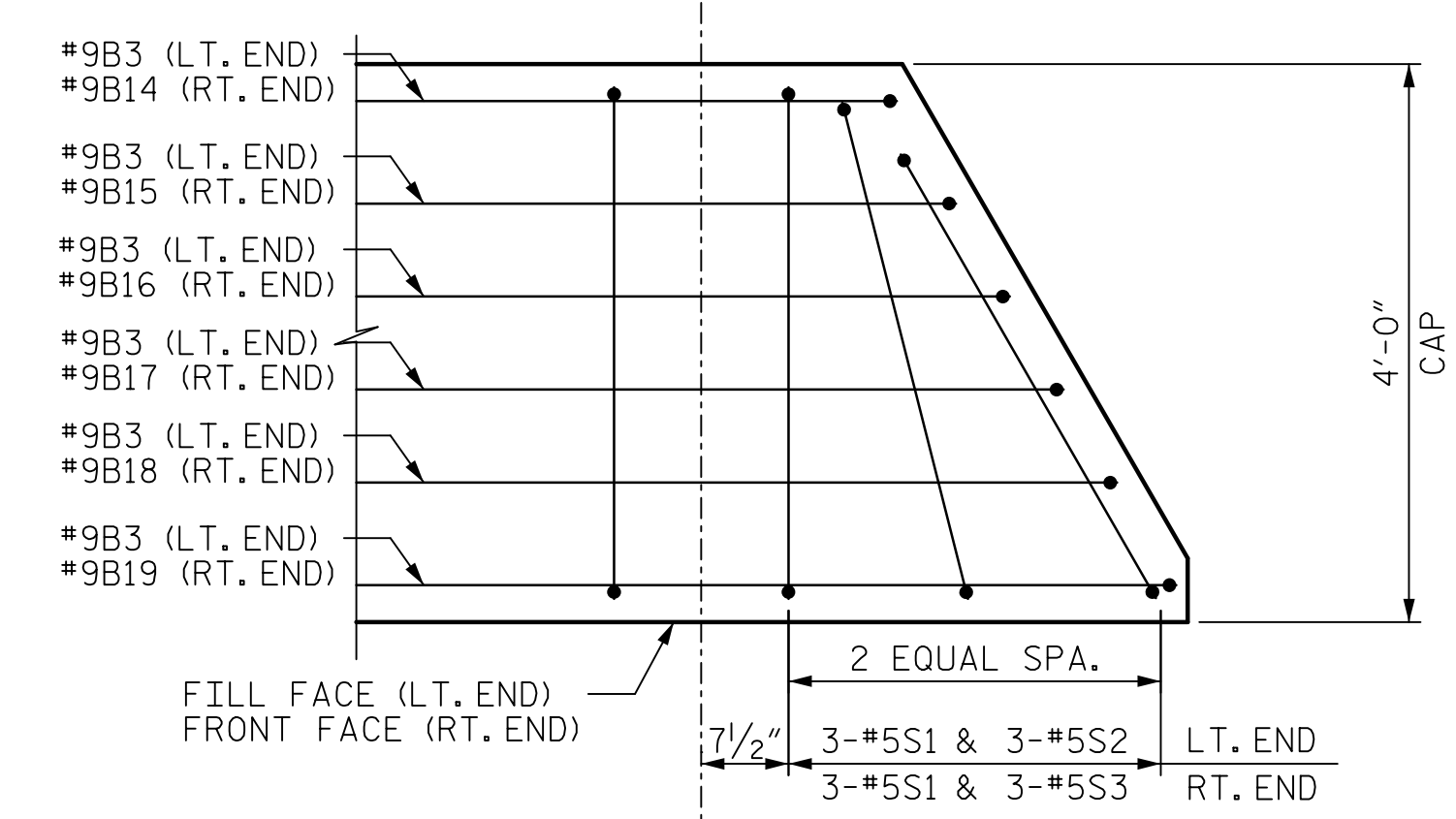


BAGGED STONE AND PIPE SHALL BE PLACED IMMEDIATELY AFTER COMPLETION OF END BENT EXCAVATION. PIPE MAY BE EITHER CONCRETE, CORRUGATED STEEL, CORRUGATED ALUMINUM ALLOY, OR CORRUGATED PLASTIC. PERFORATED PIPE WILL NOT BE ALLOWED.

BAGGED STONE SHALL REMAIN IN PLACE UNTIL THE ENGINEER DIRECTS THAT IT BE REMOVED. THE CONTRACTOR SHALL REMOVE AND DISPOSE OF SILT ACCUMULATIONS AT BAGGED STONE WHEN SO DIRECTED BY THE ENGINEER. BAGS SHALL BE REMOVED AND REPLACED WHENEVER THE ENGINEER DETERMINES THAT THEY HAVE DETERIORATED AND LOST THEIR EFFECTIVENESS.

NO SEPARATE PAYMENT WILL BE MADE FOR THIS WORK AND THE ENTIRE COST OF THIS WORK SHALL BE INCLUDED IN THE UNIT CONTRACT PRICE BID FOR THE SEVERAL PAY ITEMS.

TEMPORARY DRAINAGE AT END BENT

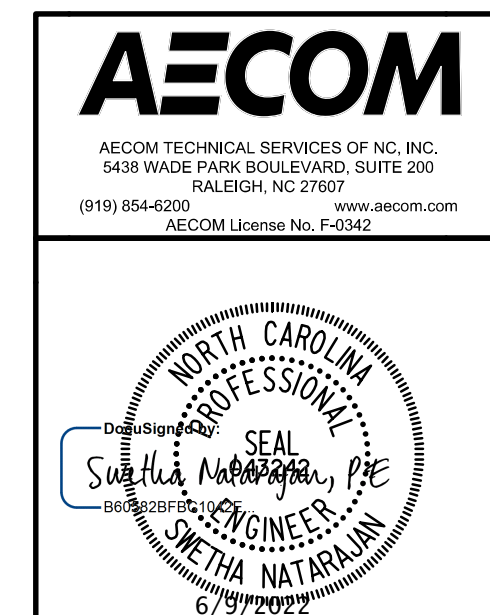


SPRAYED BAR DETAIL

REINFORCING STEEL	7,597 LBS.
CLASS A CONCRETE	
POUR #1 (CAP, COLLARS & LOWER WINGWALLS)	40.7 C.Y.
POUR #2 (UPPER WINGWALL)	7.4 C.Y.
TOTAL	48.1 C.Y.
HP 12x53 STEEL PILES:	
NO. = 8	LIN. FT. = 200
PILE DRIVING EQUIPMENT SETUP FOR HP 12x53 STEEL PILES	8 EA.
STEEL PILE POINTS	8 EA.

PROJECT NO. **B-5717**
 GUILFORD COUNTY
 STATION: **21+22.00 -L-**

SHEET 3 OF 3



STATE OF NORTH CAROLINA
 DEPARTMENT OF TRANSPORTATION
 RALEIGH
 SUBSTRUCTURE
 INTEGRAL END BENT 2
 (LEFT LANE)

REVISIONS						SHEET NO.
NO.	BY:	DATE:	NO.	BY:	DATE:	S2-35
1	SN	6-9-22	3			TOTAL SHEETS
2			4			38

DOCUMENT NOT CONSIDERED FINAL UNLESS ALL SIGNATURES COMPLETED