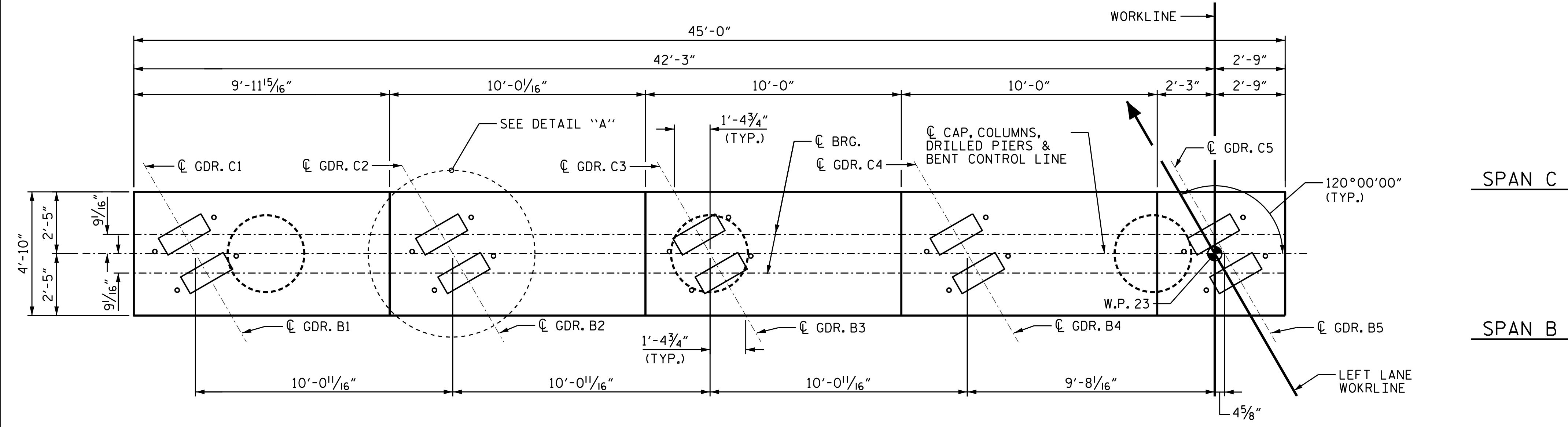
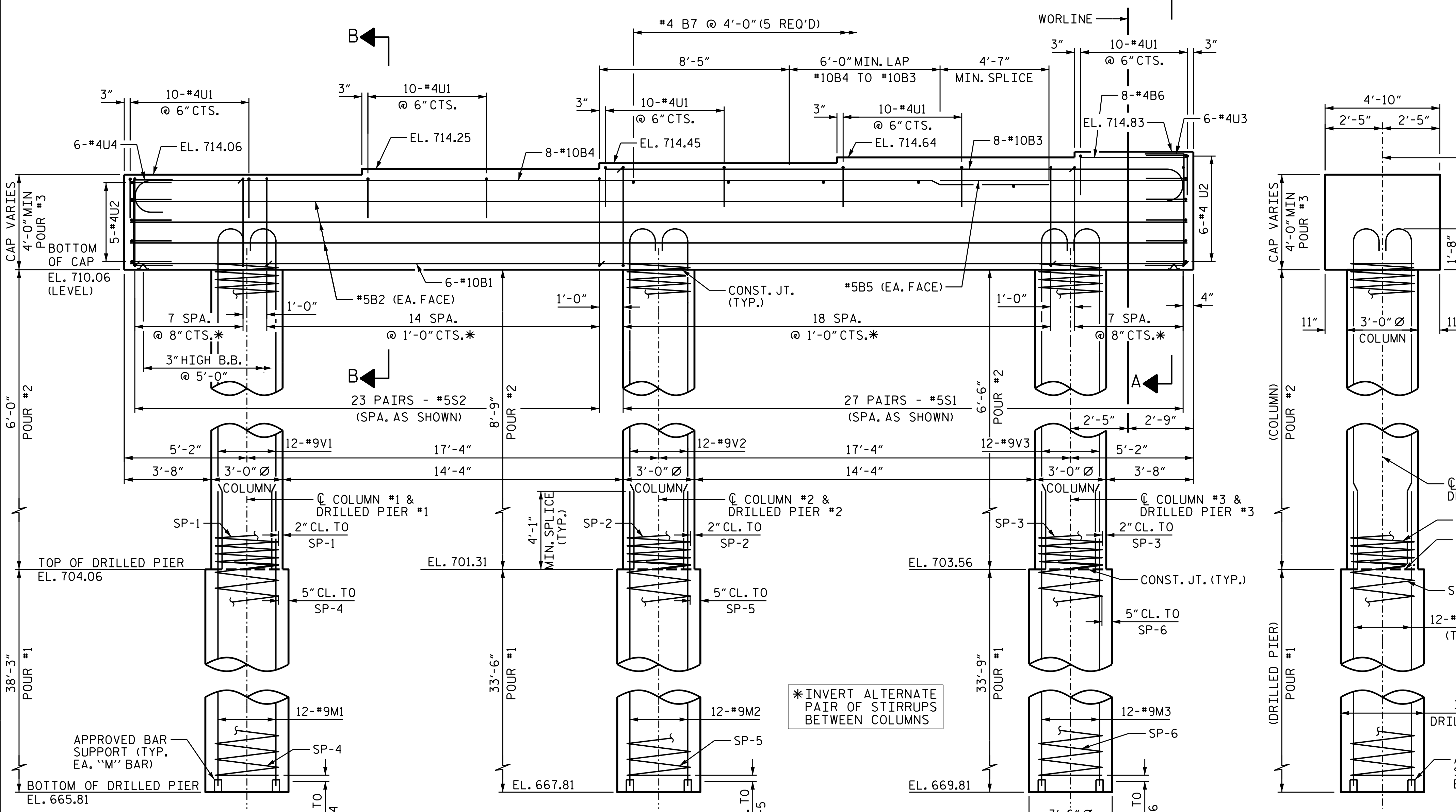


DATE: 3/31/2022
TIME: 3:58:22 PM

USER: gnt@aec.com
DN: pva@aec.com
C:\Users\pva\Documents\AECOM\2020\Documents\60592827-NCDDT_SMU_B-5717\900-CAD_GIS\910-CAD\TO_NCDDT_TIP\Structures\04_Drawings\402_06_LB-5717_SMU_B201_S2-31_40021.dgn



PLAN

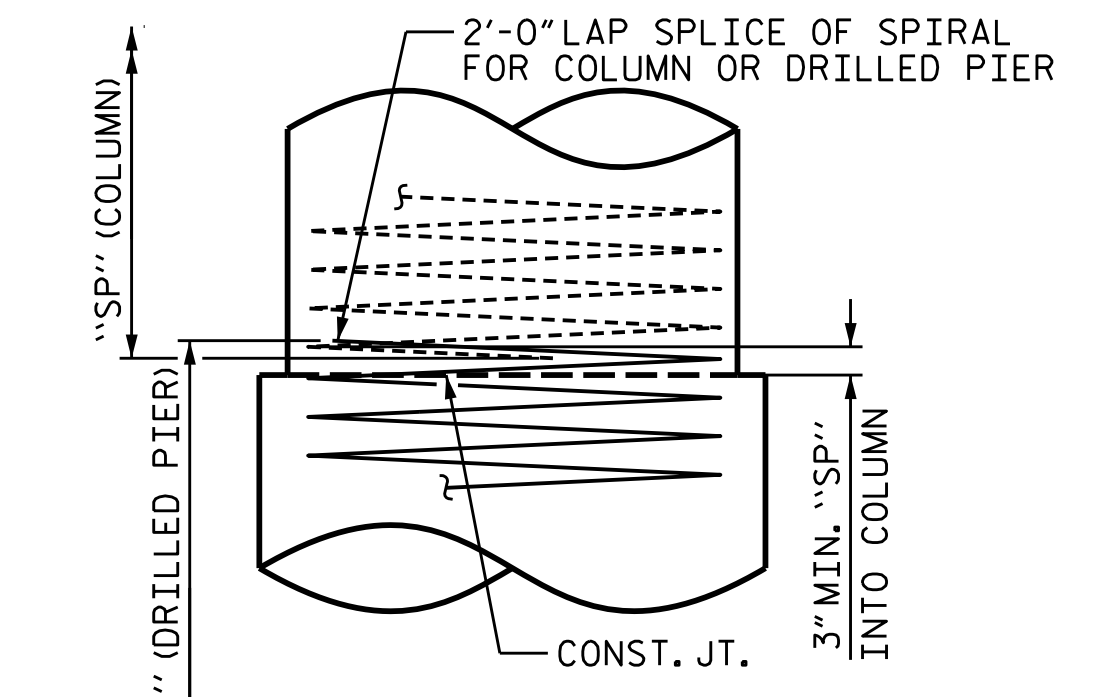


ELEVATION

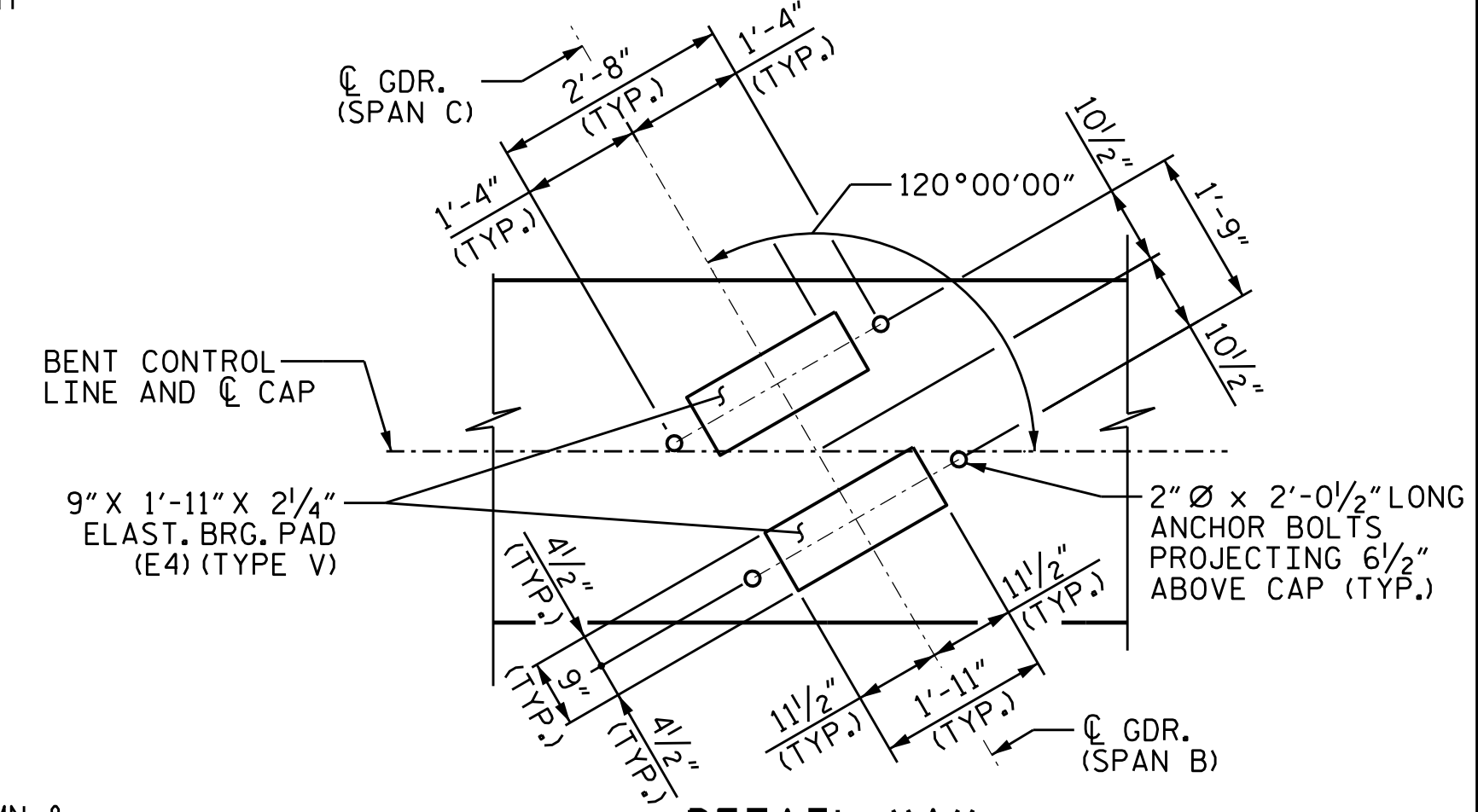
* INVERT ALTERNATE PAIR OF STIRRUPS BETWEEN COLUMNS

NOTES

STIRRUPS AND "U" BARS IN CAP MAY BE SHIFTED SLIGHTLY TO CLEAR ANCHOR BOLTS.
 ALL STEEL IN THE DRILLED PIERS IS INCLUDED IN THE PAY ITEMS FOR "REINFORCING STEEL" AND "SPIRAL COLUMN REINFORCING STEEL".
 FOR DRILLED PIERS AND PERMANENT STEEL CASING, SEE SECTION 411 OF THE STANDARD SPECIFICATIONS.
 THE CONTRACTOR'S ATTENTION IS CALLED TO THE FACT THAT THE LONGITUDINAL REINFORCEMENT FOR THE DRILLED PIERS IS DEAILED WITH 3 FEET OF EXTRA LENGTH.
 THE LOCATION OF THE CONSTRUCTION JOINT IN THE DRILLED PIERS AT BENTS 1 AND 2 IS BASED ON AN APPROXIMATE GROUND LINE ELEVATION. IF THE CONSTRUCTION JOINT IS ABOVE THE ACTUAL GROUND ELEVATION, THE CONTRACTOR SHALL PLACE THE CONSTRUCTION JOINT 1 FOOT BELOW THE GROUND LINE.
 FOR SECTIONS A-A AND B-B, AND CAP END VIEWS, SEE SHEET 2 OF 2.
 HOOKS ON "V" BARS MAY BE TURNED AS NECESSARY FOR PLACING REINFORCING STEEL.



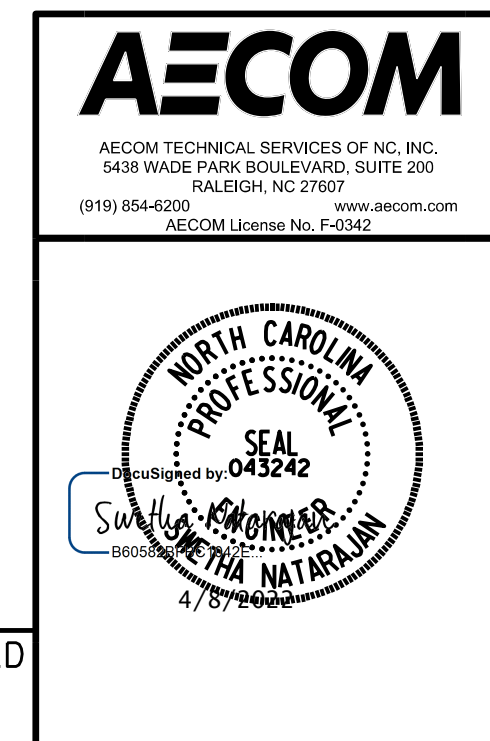
CONSTRUCTION JOINT DETAIL



DETAIL "A"

PROJECT NO. **B-5717**
 GUILFORD COUNTY
 STATION: **21+22.00 -L-**

SHEET 1 OF 2



STATE OF NORTH CAROLINA DEPARTMENT OF TRANSPORTATION RALEIGH		SUBSTRUCTURE BENT 2 (LEFT LANE)	
REVISIONS		SHEET NO. S2-31	
NO.	BY:	DATE:	TOTAL SHEETS 38
1			
2			

END ELEVATION

DOCUMENT NOT CONSIDERED FINAL UNLESS ALL SIGNATURES COMPLETED