

DATE: 3/31/2022  
TIME: 3:08:30 PM

USER: gdrum@ncdot.gov  
DN: pva@ncdot.gov  
PROJECT: B-5717-900-CAD  
DRAWING: 60592827-NCDDT-SMU-B-5717-900-CAD  
G:\S\910-CAD\TO-NCDDT-TIPS\Structures\04-Drawings\402-049-B-5717-SMU-BOM-S2-25-4001.dgn

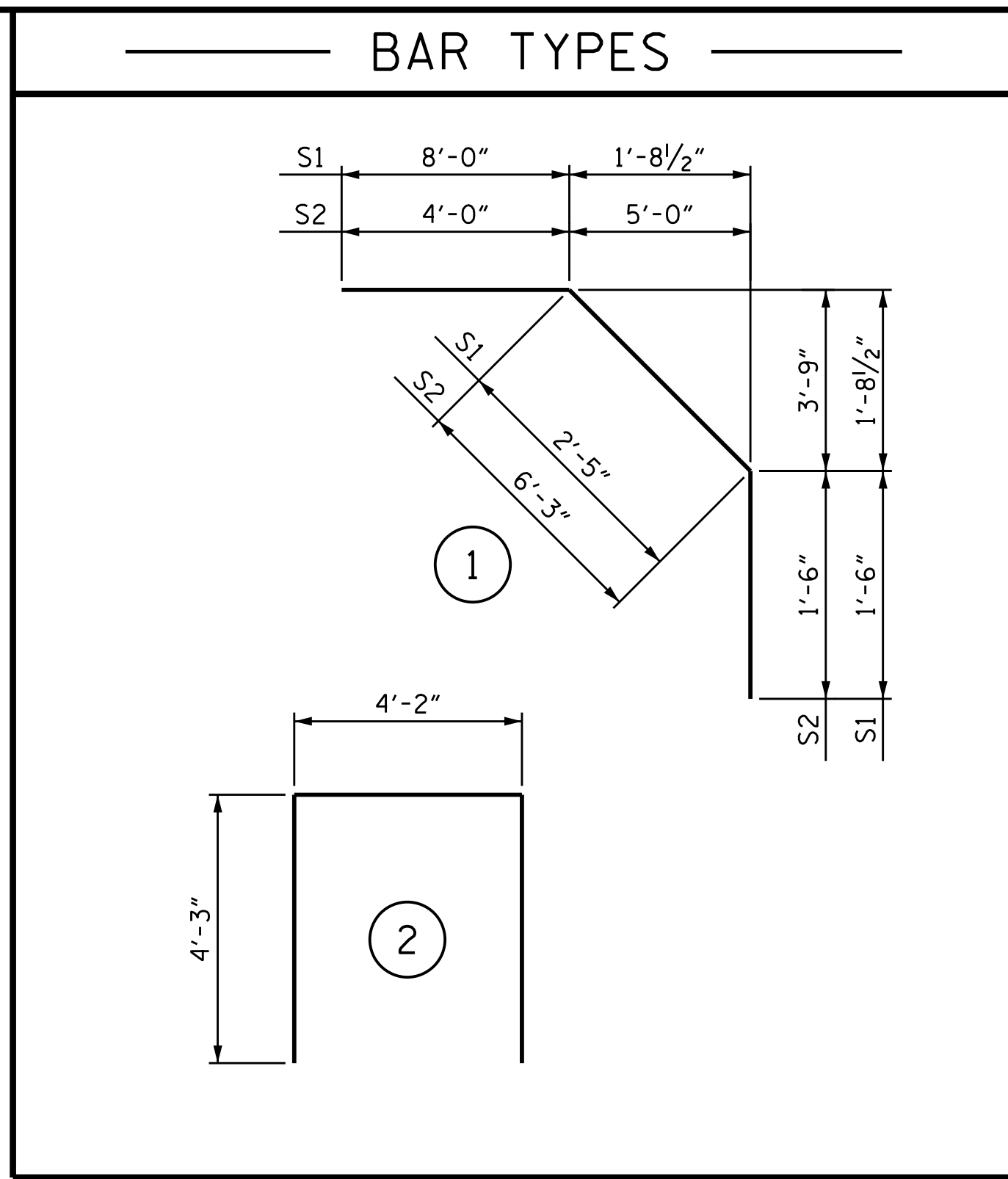
**SUPERSTRUCTURE REINFORCING STEEL LENGTHS ARE BASED ON THE FOLLOWING MINIMUM SPLICE LENGTHS**

BAR SIZE	SUPERSTRUCTURE EXCEPT APPROACH SLABS, PARAPETS, AND BARRIER RAILS		APPROACH SLABS		PARAPETS AND BARRIER RAILS
	EPOXY COATED	UNCOATED	EPOXY COATED	UNCOATED	
#4	1'-11"	1'-7"	1'-11"	1'-7"	2'-6"
#5	2'-5"	2'-0"	2'-5"	2'-0"	3'-1"
#6	2'-10"	2'-5"	3'-7"	2'-5"	3'-8"
#7	4'-2"	2'-9"			
#8	4'-9"	3'-2"			

**SUPERSTRUCTURE BILL OF MATERIAL**

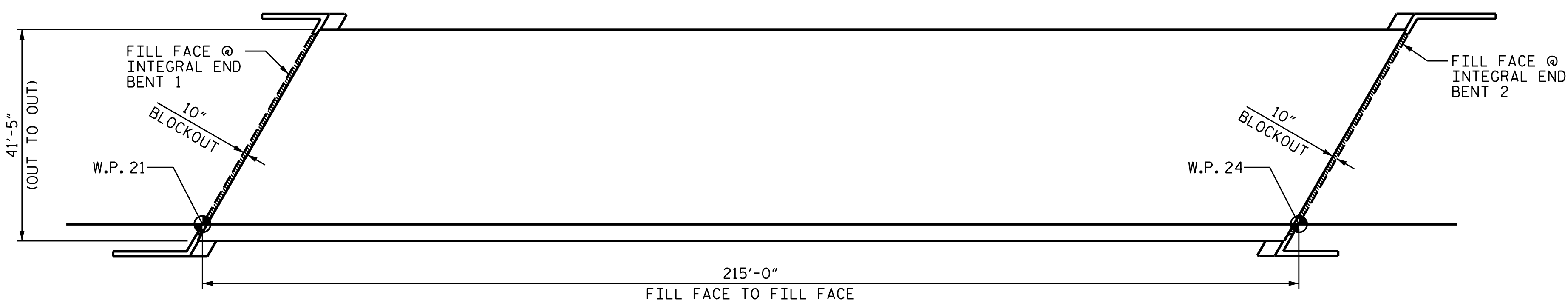
	CLASS AA CONCRETE (CU. YDS.)	REINFORCING STEEL (LBS.)	EPOXY COATED REINFORCING STEEL (LBS.)
SPANS A-C		31,070	34,573
POUR #1A	51.0	-	-
POUR #1B	88.6	-	-
POUR #1C	45.3	-	-
POUR #2A	22.7	-	-
POUR #2B	22.7	-	-
POUR #3A	37.8	-	-
POUR #3B	37.8	-	-
TOTALS **	306.0	31,070	34,573

\*\*QUANTITIES FOR BARRIER RAIL, PARAPET AND END POST AND SIDEWALK ARE NOT INCLUDED



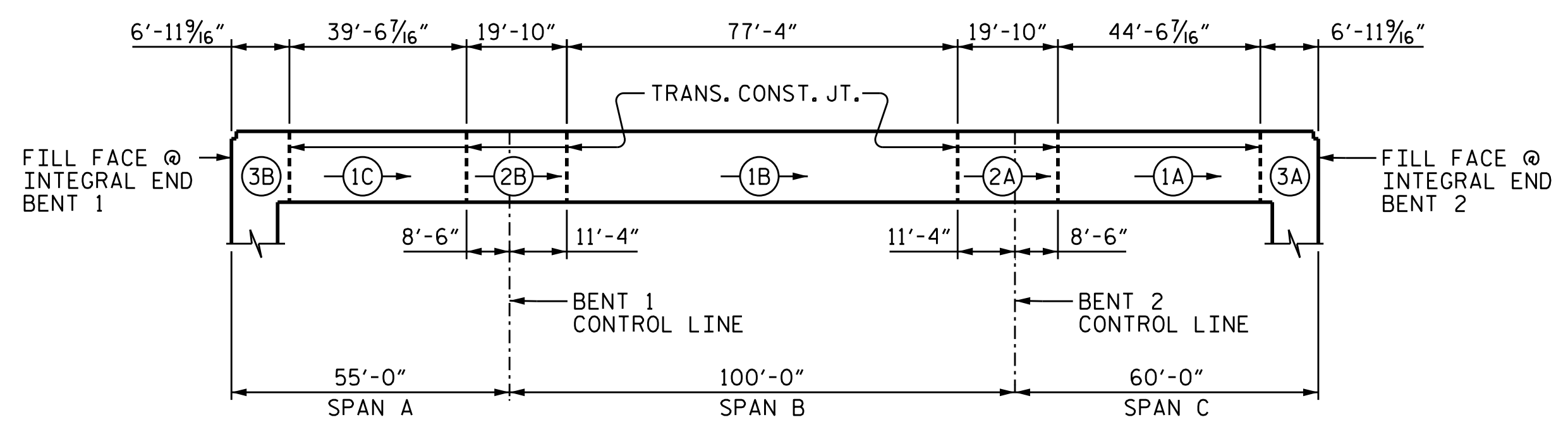
**REINFORCING BAR SCHEDULE**

BAR	NO.	SIZE	TYPE	LENGTH	WEIGHT	BAR	NO.	SIZE	TYPE	LENGTH	WEIGHT	BAR	NO.	SIZE	TYPE	LENGTH	WEIGHT
* A1	378	5	STR	41'-1"	16197	* A126	2	5	STR	18'-11"	39	A222	2	5	STR	22'-5"	47
A2	378	5	STR	41'-1"	16197	* A127	2	5	STR	18'-1"	38	A223	2	5	STR	21'-6"	45
						* A128	2	5	STR	17'-2"	36	A224	2	5	STR	20'-8"	43
* A101	2	5	STR	40'-7"	85	* A129	2	5	STR	16'-4"	34	A225	2	5	STR	19'-10"	41
* A102	2	5	STR	39'-9"	83	* A130	2	5	STR	15'-6"	32	A226	2	5	STR	18'-11"	39
* A103	2	5	STR	38'-10"	81	* A131	2	5	STR	14'-7"	30	A227	2	5	STR	18'-1"	38
* A104	2	5	STR	38'-0"	79	* A132	2	5	STR	13'-9"	29	A228	2	5	STR	17'-2"	36
* A105	2	5	STR	37'-1"	77	* A133	2	5	STR	12'-10"	27	A229	2	5	STR	16'-4"	34
* A106	2	5	STR	36'-3"	76	* A134	2	5	STR	12'-0"	25	A230	2	5	STR	15'-6"	32
* A107	2	5	STR	35'-5"	74	* A135	2	5	STR	11'-2"	23	A231	2	5	STR	14'-7"	30
* A108	2	5	STR	34'-6"	72	* A136	2	5	STR	10'-3"	21	A232	2	5	STR	13'-9"	29
* A109	2	5	STR	33'-8"	70	* A137	2	5	STR	9'-5"	20	A233	2	5	STR	12'-10"	27
* A110	2	5	STR	32'-9"	68	* A138	2	5	STR	8'-6"	18	A234	2	5	STR	12'-0"	25
* A111	2	5	STR	31'-11"	67	* A139	2	5	STR	7'-8"	16	A235	2	5	STR	11'-2"	23
* A112	2	5	STR	31'-1"	65	* A140	2	5	STR	6'-10"	14	A236	2	5	STR	10'-3"	21
* A113	2	5	STR	30'-2"	63	* A141	2	5	STR	5'-11"	12	A237	2	5	STR	9'-5"	20
* A114	2	5	STR	29'-4"	61	* A142	2	5	STR	5'-1"	11	A238	2	5	STR	8'-6"	18
* A115	2	5	STR	28'-6"	59	* A143	2	5	STR	4'-3"	9	A239	2	5	STR	7'-8"	16
* A116	2	5	STR	27'-7"	58						A240	2	5	STR	6'-10"	14	
* A117	2	5	STR	26'-9"	56	A201	2	5	STR	40'-7"	85	A241	2	5	STR	5'-11"	12
* A118	2	5	STR	25'-10"	54	A202	2	5	STR	39'-9"	83	A242	2	5	STR	5'-1"	11
* A119	2	5	STR	25'-0"	52	A203	2	5	STR	38'-10"	81	A243	2	5	STR	4'-3"	9
* A120	2	5	STR	24'-2"	50	A204	2	5	STR	38'-0"	79						
* A121	2	5	STR	23'-3"	48	A205	2	5	STR	37'-1"	77	* B1	56	6	STR	11'-10"	995
* A122	2	5	STR	22'-5"	47	A206	2	5	STR	36'-3"	76	* B2	52	6	STR	13'-10"	1080
* A123	2	5	STR	21'-6"	45	A207	2	5	STR	35'-5"	74	* B3	29	4	STR	33'-10"	655
* A124	2	5	STR	20'-8"	43	A208	2	5	STR	34'-6"	72	* B4	58	6	STR	58'-0"	5053
* A125	2	5	STR	19'-10"	41	A209	2	5	STR	33'-8"	70	* B5	29	4	STR	35'-9"	693
						A210	2	5	STR	32'-9"	68	* B6	29	4	STR	38'-10"	752
						A211	2	5	STR	31'-11"	67	B7	48	5	STR	35'-9"	1790
						A212	2	5	STR	31'-1"	65	B8	192	4	STR	28'-1"	3602
						A213	2	5	STR	30'-2"	63	B9	48	5	STR	35'-7"	1781
						A214	2	5	STR	29'-4"	61	B10	48	5	STR	40'-9"	2040
						A215	2	5	STR	28'-6"	59	* B11	108	6	STR	37'-0"	6002
						A216	2	5	STR	27'-7"	58	B12	168	4	STR	22'-1"	2478
						A217	2	5	STR	26'-9"	56						
						A218	2	5	STR	25'-10"	54	K1	20	4	STR	23'-3"	311
						A219	2	5	STR	25'-0"	52	K2	8	4	STR	7'-2"	38
						A220	2	5	STR	24'-2"	50	K3	8	4	STR	8'-6"	45
						A221	2	5	STR	23'-3"	48	K4	16	4	STR	8'-10"	94
											K5	8	4	STR	7'-8"	41	
											K6	4	4	STR	2'-1"	6	
											K7	4	4	STR	2'-10"	8	
											K8	8	4	STR	3'-0"	16	
											K9	4	4	STR	2'-5"	6	
											* S1	72	4	1	11'-11"	573	
											* S2	72	4	1	11'-9"	565	
											U1	72	4	2	12'-8"	609	
											REINFORCING STEEL					LBS. 31,070	
											* EPOXY COATED REINFORCING STEEL					LBS. 34,573	



**GROOVING BRIDGE FLOORS**

APPROACH SLABS	1,470	SQ.FT.
BRIDGE DECK	6,393	SQ.FT.
TOTAL	7,863	SQ.FT.

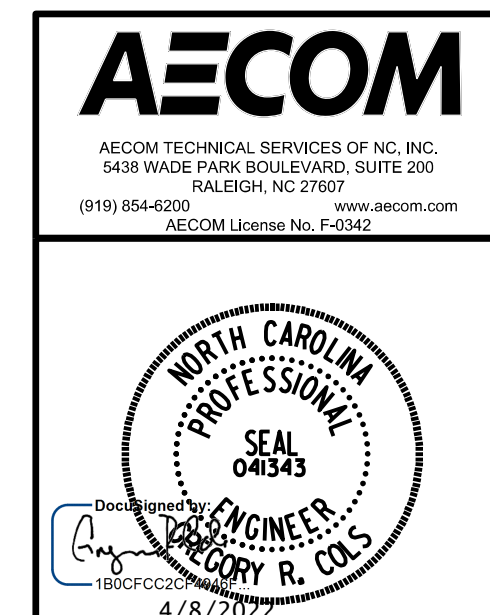


# INDICATES POUR NUMBER AND POUR DIRECTION  
POUR ② SHALL NOT BE STARTED UNTIL BOTH ADJACENT POURS ① REACH A MINIMUM OF 3,000 PSI.  
ALL DIMENSIONS MEASURED ALONG -L-

NOTE:  
SIDEWALK, PARAPET, AND BARRIER RAIL SHALL NOT BE POURED PRIOR TO COMPLETION OF ENTIRE DECK POUR.

DRAWN BY :	D.R. DRUM	DATE :	06/2021
CHECKED BY :	G.R. COLS	DATE :	06/2021
DESIGNED BY :	D.R. DRUM	DATE :	06/2021
DESIGN CHECKED BY :	G.R. COLS	DATE :	06/2021

DOCUMENT NOT CONSIDERED FINAL UNLESS ALL SIGNATURES COMPLETED



PROJECT NO. B-5717  
GUILFORD COUNTY  
STATION: 21+22.00 -L-

STATE OF NORTH CAROLINA  
DEPARTMENT OF TRANSPORTATION  
RALEIGH

STANDARD  
SUPERSTRUCTURE  
BILL OF MATERIAL  
(LEFT LANE)

REVISIONS						SHEET NO.
NO.	BY:	DATE:	NO.	BY:	DATE:	
1			3			S2-25 TOTAL SHEETS 38
2			4			