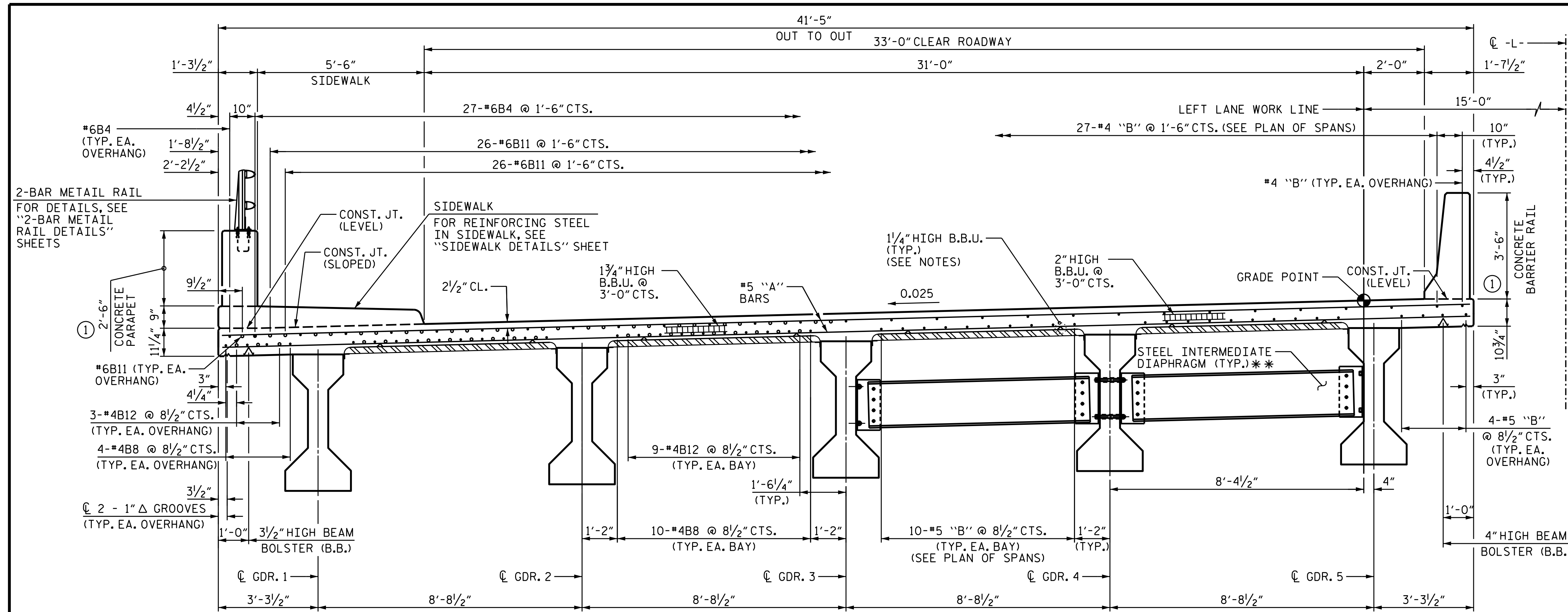


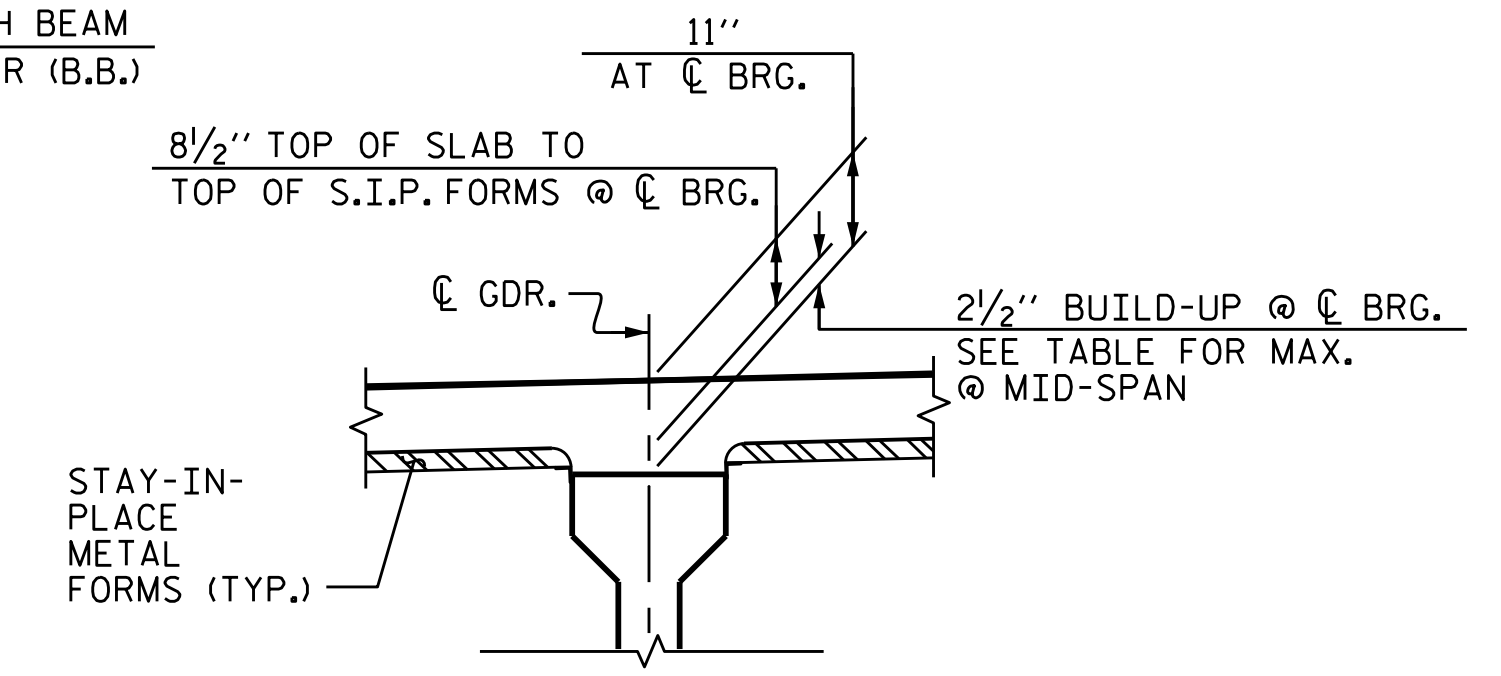
DATE: 3/31/2022
TIME: 3:45:58 PM

USER: gnt@aec.com
DN: /cn=raja.natarajan@aec.com, o=AECOM, ou=US, ou=Engineering, ou=Structures, ou=North Carolina, ou=Projects, ou=B-5717, ou=Guilford County, ou=Superstructure, ou=Typical Section & Details, ou=Left Lane, ou=S2-05, ou=40021dgn



HALF SECTION - LINK SLAB AT BENTS HALF SECTION AT MIDSPAN
TYPICAL SECTION

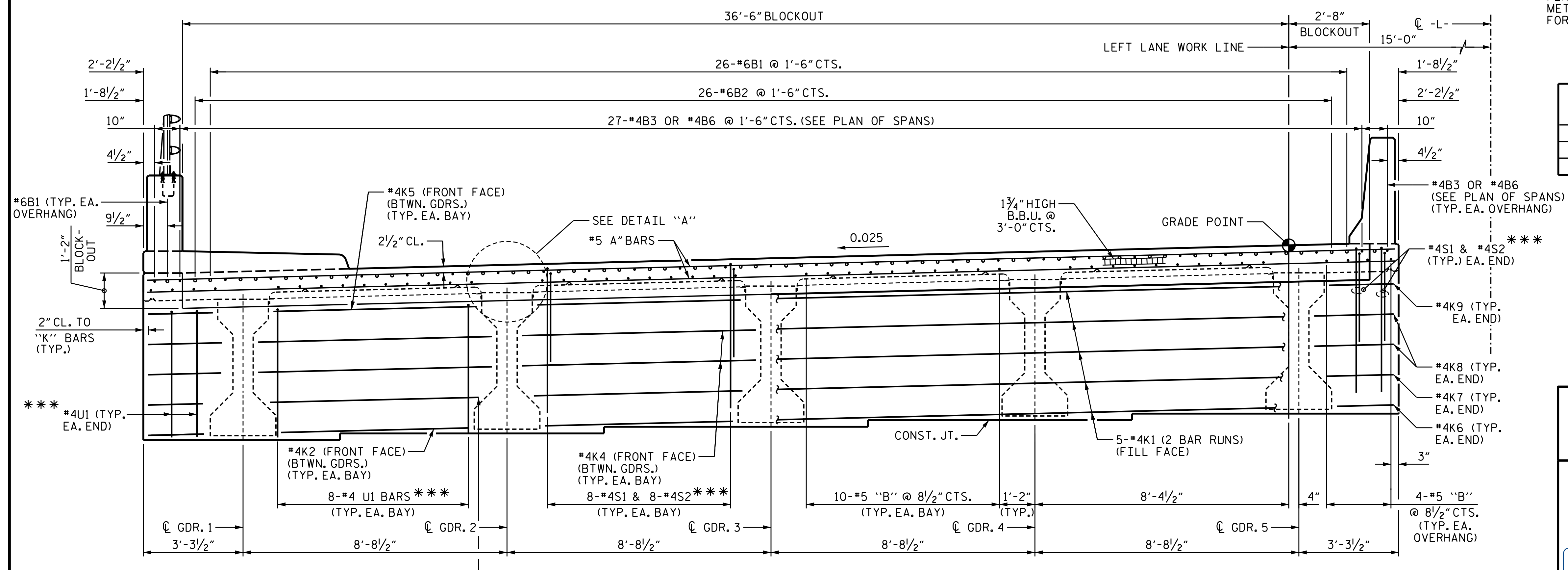
NOTES:
 PROVIDE 1/4" HIGH BEAM BOLSTERS UPPER AT 4'-0" CTS. ATOP THE METAL STAY-IN-PLACE FORMS TO SUPPORT THE BOTTOM MAT OF "A" BARS. WHEN USING REMOVABLE FORMS, PROVIDE CONTINUOUS HIGH CHAIRS FOR METAL DECK (C.H.C.M.) AT 4'-0" CTS. WITH A HEIGHT TO SUPPORT THE BOTTOM MAT OF "A" BARS A CLEAR DISTANCE OF 2 1/2" ABOVE THE TOP OF THE REMOVABLE FORM.
 LONGITUDINAL STEEL MAY BE SHIFTED SLIGHTLY, AS NECESSARY, TO AVOID INTERFERENCE WITH STIRRUPS IN PRESTRESSED CONCRETE GIRDERS.
 PREVIOUSLY CAST CONCRETE IN A CONTINUOUS UNIT SHALL HAVE ATTAINED A MINIMUM COMPRESSIVE STRENGTH OF 3,000 PSI BEFORE ADDITIONAL CONCRETE IS CAST IN THE UNIT.
 CONCRETE PARAPET, BARRIER RAIL, AND SIDEWALK IN A CONTINUOUS UNIT SHALL NOT BE CAST UNTIL ALL SLAB CONCRETE IN THE UNIT HAS BEEN CAST AND HAS REACHED A MINIMUM COMPRESSIVE STRENGTH OF 3,000 PSI.
 ALL DIMENSIONS ARE HORIZONTAL OR VERTICAL UNLESS OTHERWISE NOTED.
 ** FOR INTERMEDIATE STEEL DIAPHRAGM DETAILS, SEE "INTERMEDIATE STEEL DIAPHRAGMS FOR TYPE IV PRESTRESSED CONCRETE GIRDERS" SHEET.
 *** #4S1, #4S2, AND #4U1 BARS TO MATCH WITH #4 "V" BARS IN INTEGRAL END BENT CAP
 ① FOR BARRIER RAIL AND PARAPET REINFORCING STEEL & DETAILS, SEE "CONCRETE BARRIER RAIL AND PARAPET" SHEETS.



SPAN	MAX. MID-SPAN BUILD-UP (INCHES)*	CONTROLLING GIRDER
1	2 5/16"	2, 3, 4
2	2 1/8"	2, 3, 4
3	2 3/16"	2, 3, 4

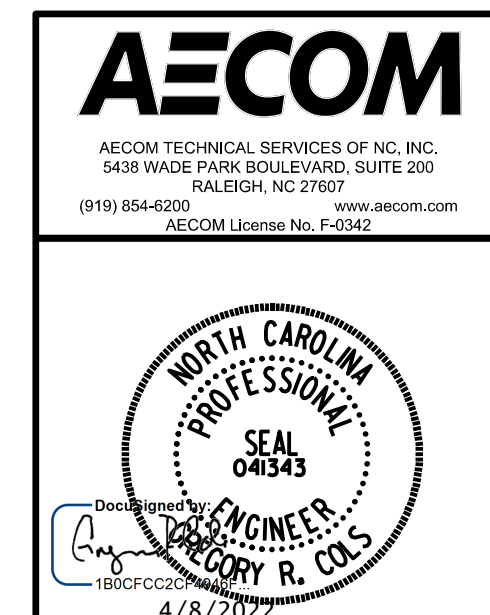
* BASED ON PREDICTED FINAL CAMBER AND THERORETICAL GRADE LINE ELEVATIONS

DETAIL "A"



TYPICAL SECTION AT INTEGRAL END BENT
(FOR ADDITIONAL DIMENSIONS, SEE TYPICAL SECTION ABOVE)

PROJECT NO. **B-5717**
 GUILFORD COUNTY
 STATION: **21+22.00 -L-**
 SHEET 1 OF 2



STATE OF NORTH CAROLINA
 DEPARTMENT OF TRANSPORTATION
 RALEIGH
 SUPERSTRUCTURE
TYPICAL SECTION & DETAILS
(LEFT LANE)

DRAWN BY: M. CATER DATE: 09/2021
 CHECKED BY: G.R. COLS DATE: 09/2021
 DESIGNED BY: D.R. DRUM DATE: 06/2021
 DESIGN CHECKED BY: S. NATARAJAN DATE: 06/2021

#4K3 (FRONT FACE)
 (BTWN. GDRS.)
 (TYP. EA. BAY)

DOCUMENT NOT CONSIDERED
 FINAL UNLESS ALL
 SIGNATURES COMPLETED

REVISIONS						SHEET NO.
NO.	BY:	DATE:	NO.	BY:	DATE:	TOTAL SHEETS
1			3			38
2			4			