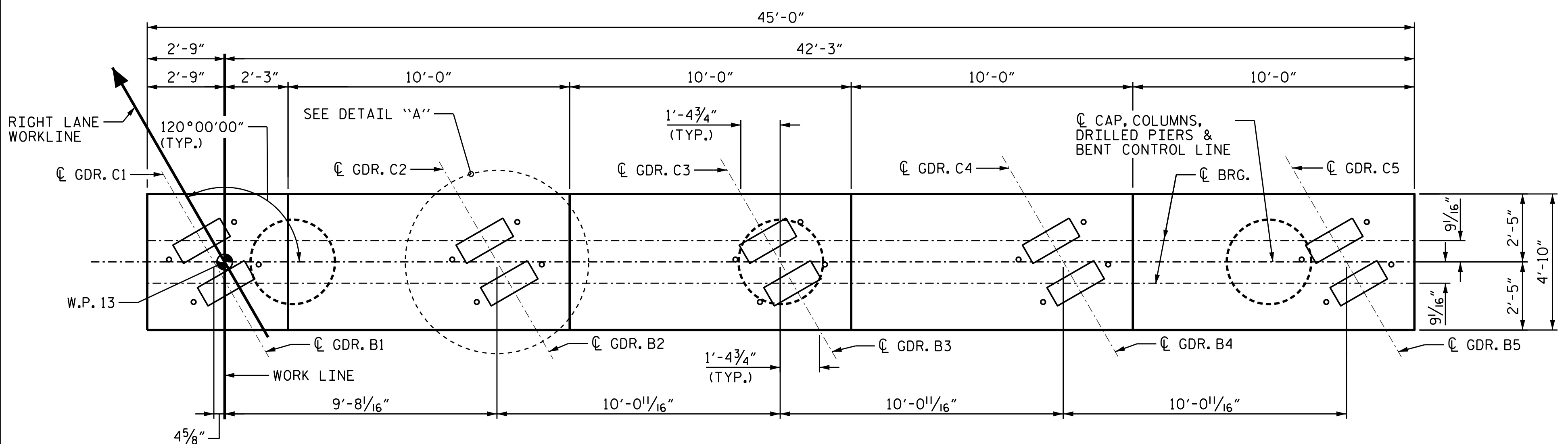


DATE: 3/31/2022
TIME: 3:53:47PM

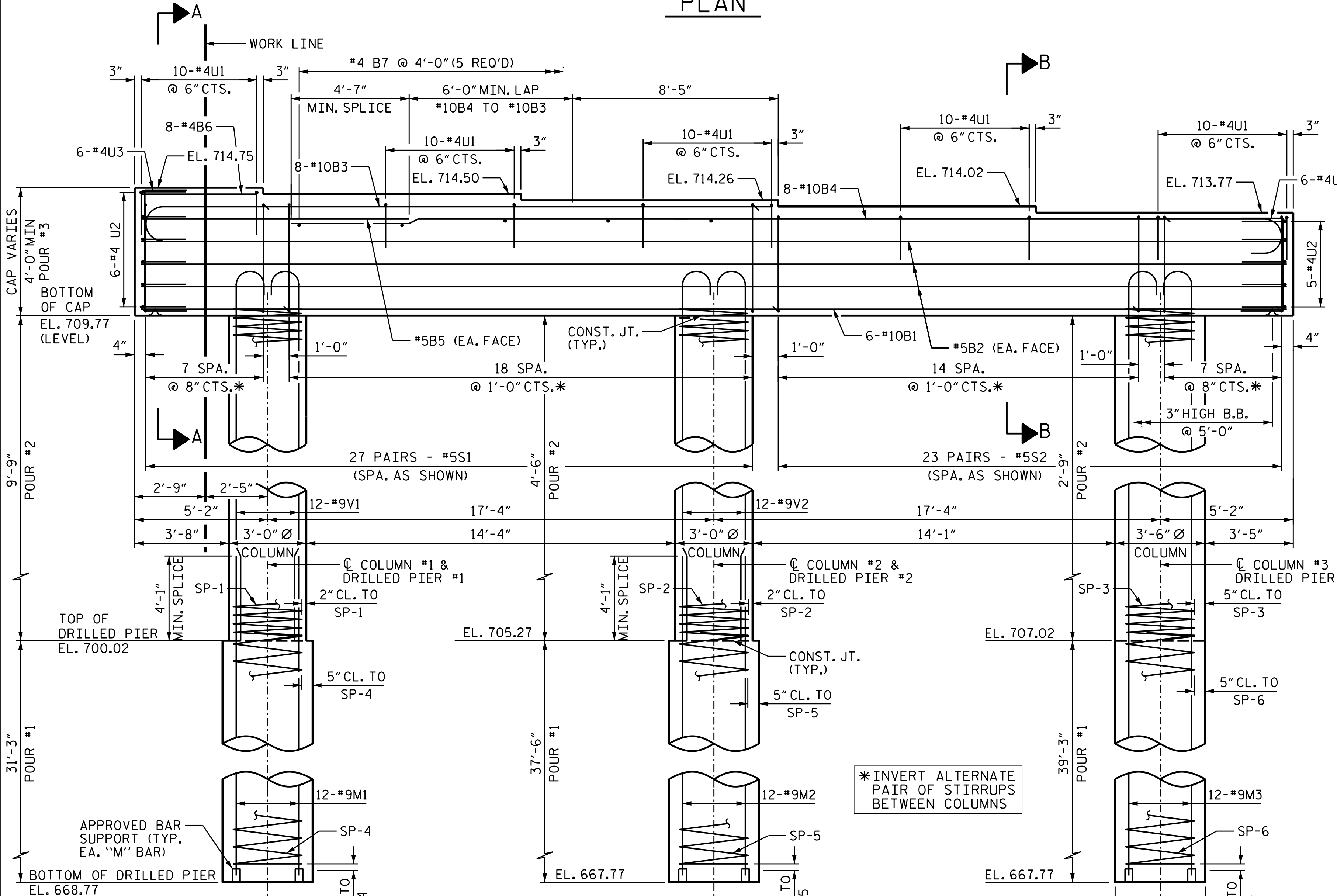
USER: gnt@ac.com
DGN: pva\ac.com-nr-pva\ben@ac.com\DS21_MAL_2020\Documents\60592827-NCDDT_SMU_B-5717\BENT_2\BENT_2_S1-31_401009.dgn



SPAN C

SPAN B

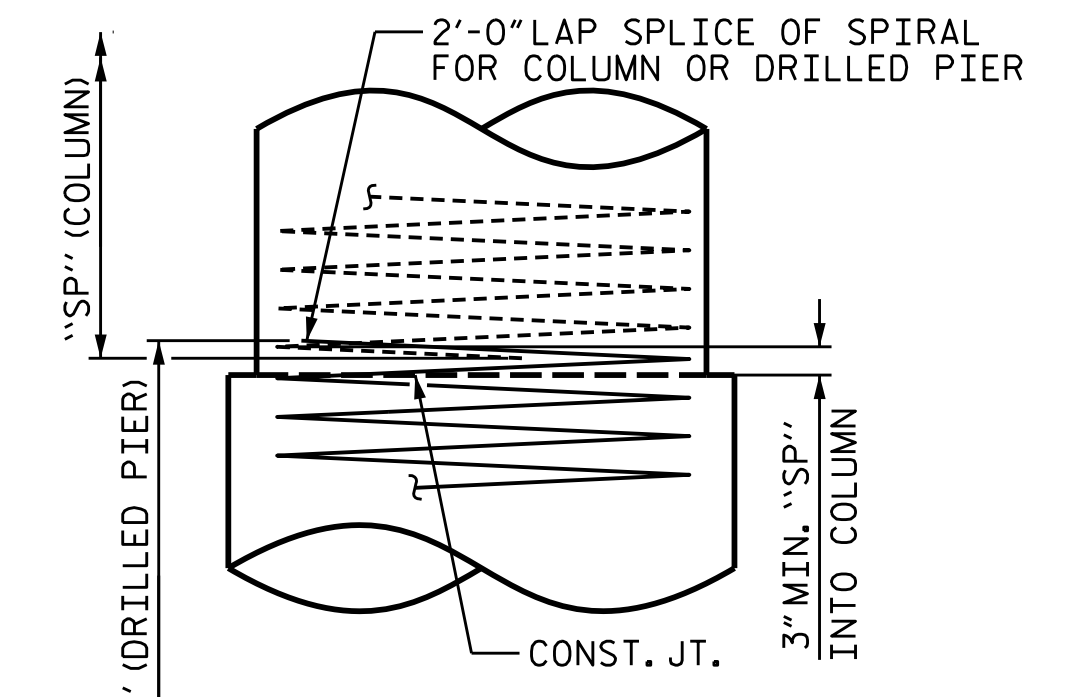
PLAN



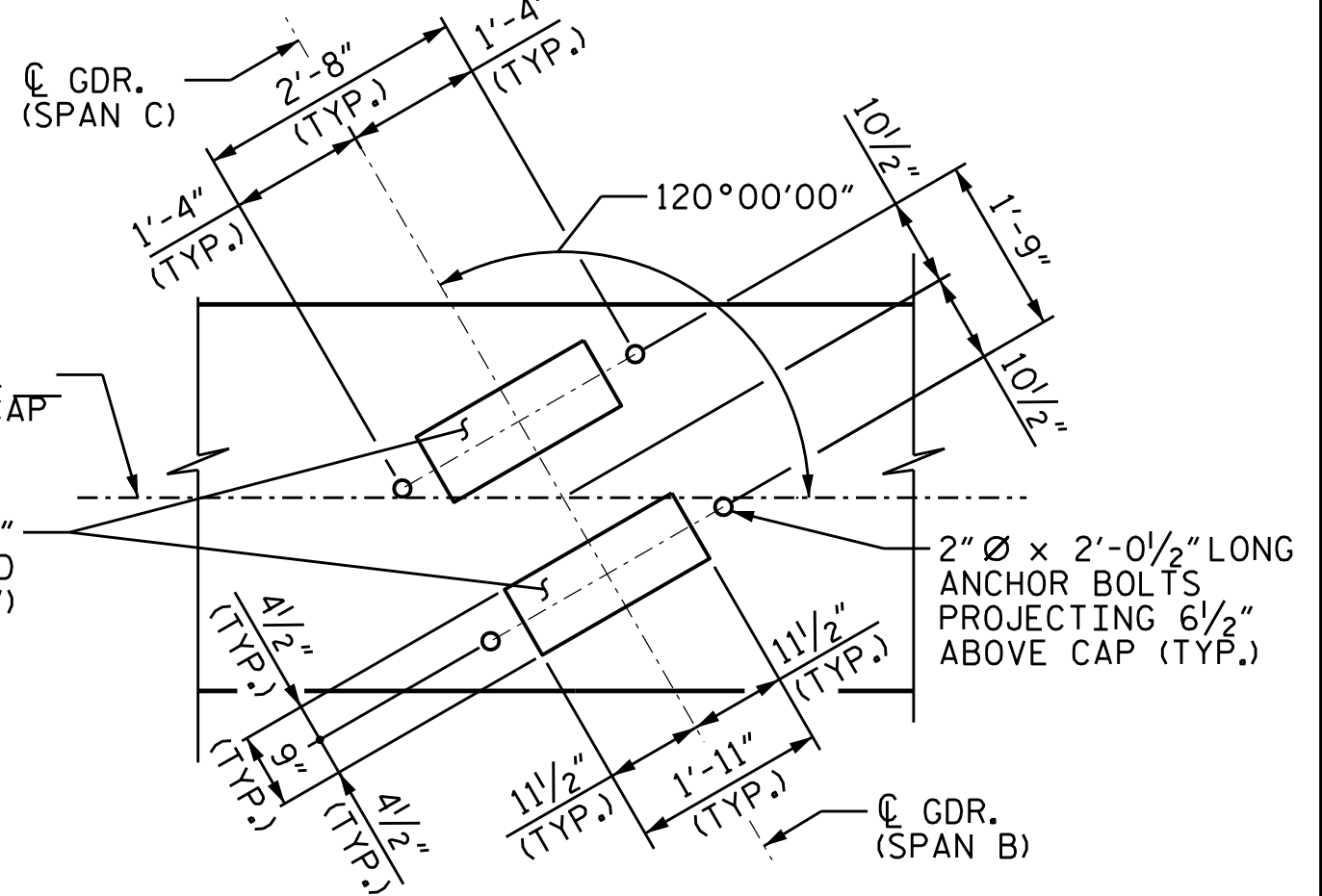
ELEVATION

NOTES

- STIRRUPS AND "U" BARS IN CAP MAY BE SHIFTED SLIGHTLY TO CLEAR ANCHOR BOLTS.
- ALL STEEL IN THE DRILLED PIERS IS INCLUDED IN THE PAY ITEMS FOR "REINFORCING STEEL" AND "SPIRAL COLUMN REINFORCING STEEL".
- FOR DRILLED PIERS AND PERMANENT STEEL CASING, SEE SECTION 411 OF THE STANDARD SPECIFICATIONS.
- THE CONTRACTOR'S ATTENTION IS CALLED TO THE FACT THAT THE LONGITUDINAL REINFORCEMENT FOR THE DRILLED PIERS IS DETAILED WITH 3 FEET OF EXTRA LENGTH.
- THE LOCATION OF THE CONSTRUCTION JOINT IN THE DRILLED PIERS AT BENTS 1 AND 2 IS BASED ON AN APPROXIMATE GROUND LINE ELEVATION. IF THE CONSTRUCTION JOINT IS ABOVE THE ACTUAL GROUND ELEVATION, THE CONTRACTOR SHALL PLACE THE CONSTRUCTION JOINT 1 FOOT BELOW THE GROUND LINE.
- FOR SECTIONS A-A AND B-B, AND CAP END VIEWS, SEE SHEET 2 OF 2.
- HOOKS ON "V" BARS MAY BE TURNED AS NECESSARY FOR PLACING REINFORCING STEEL.



CONSTRUCTION JOINT DETAIL



DETAIL "A"

PROJECT NO. **B-5717**
GUILFORD COUNTY
 STATION: **21+22.00 -L-**

SHEET 1 OF 2

AECOM
AECOM TECHNICAL SERVICES OF NC, INC.
 5438 WADE PARK BOULEVARD, SUITE 200
 RALEIGH, NC 27607
 (919) 854-6200 www.aecom.com
 AECOM License No. F-0342

PROFESSIONAL SEAL
 S. NATARAJAN
 4/7/2022

STATE OF NORTH CAROLINA DEPARTMENT OF TRANSPORTATION RALEIGH		SUBSTRUCTURE BENT 2 (RIGHT LANE)		SHEET NO. S1-31
REVISIONS		NO.		TOTAL SHEETS
NO.	BY:	DATE:	NO.	38
1			3	
2			4	

DOCUMENT NOT CONSIDERED FINAL UNLESS ALL SIGNATURES COMPLETED