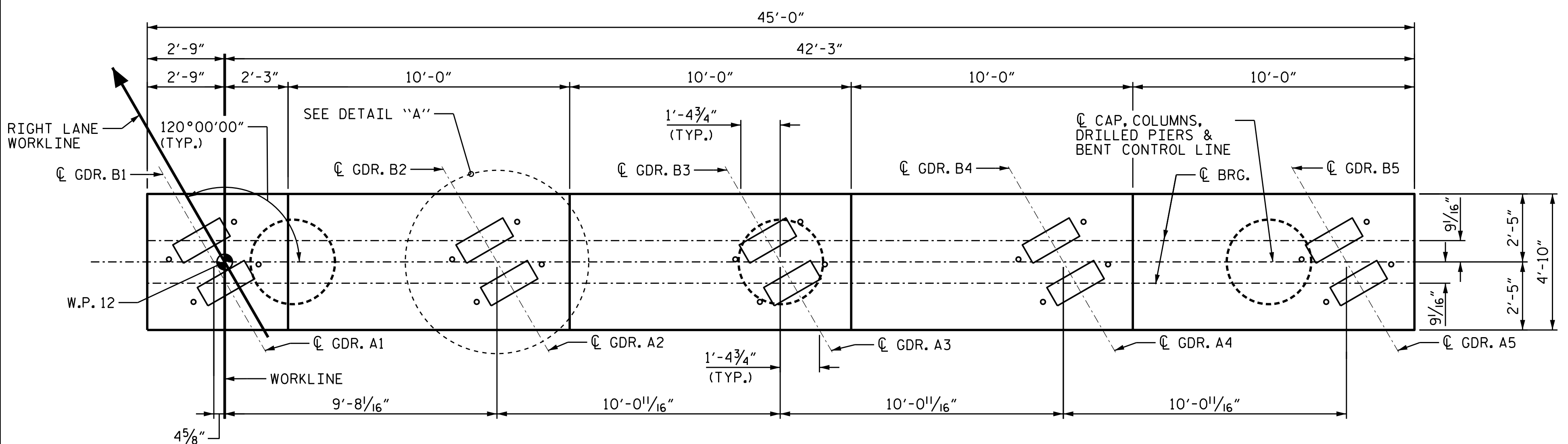


DATE: 3/31/2022  
TIME: 3:52:25 PM

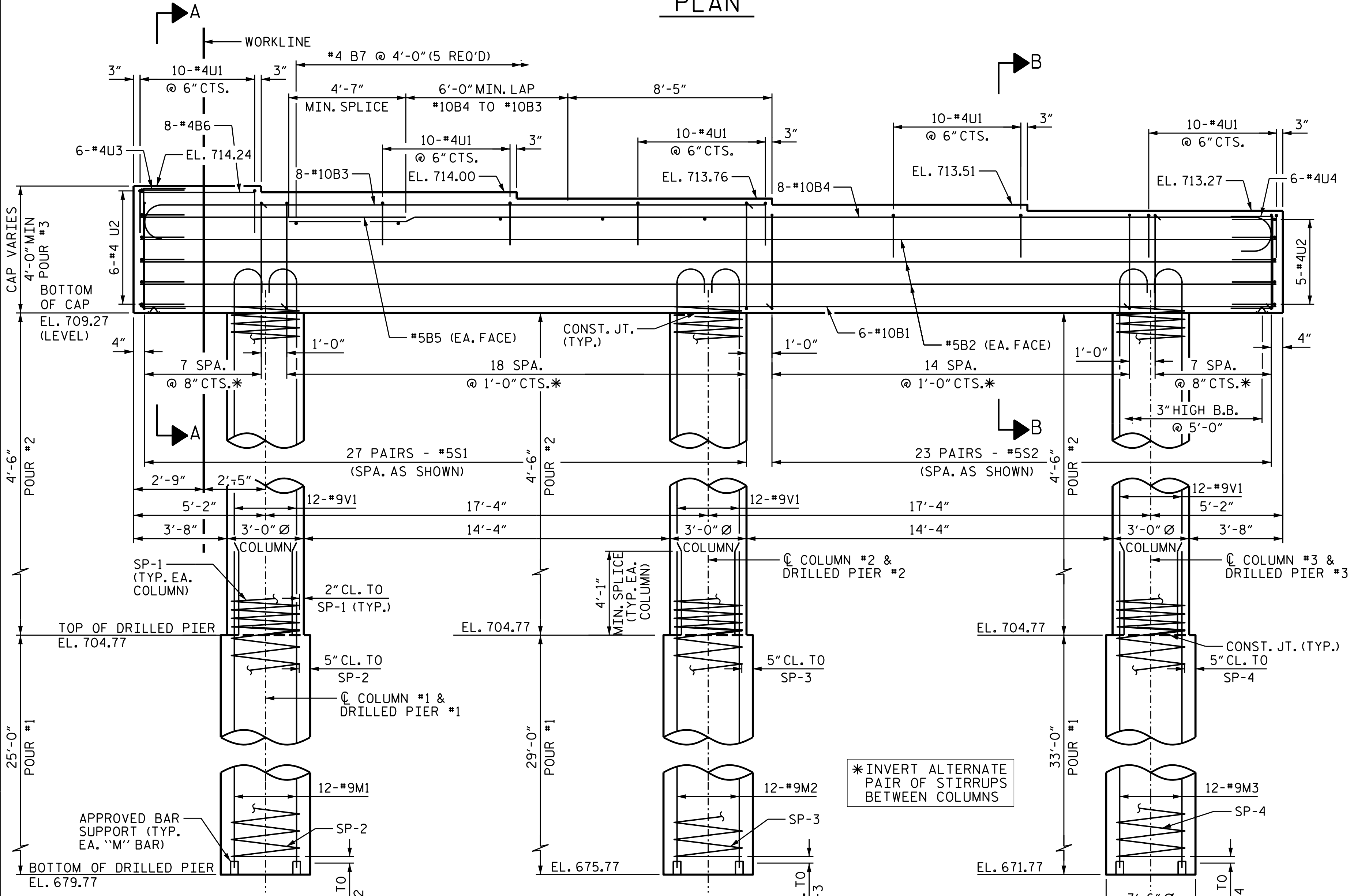
USER: gnt@ac.com  
DN: pva@ac.com  
USFP: gnt@ac.com  
DGN: pva@ac.com



SPAN B

SPAN A

PLAN

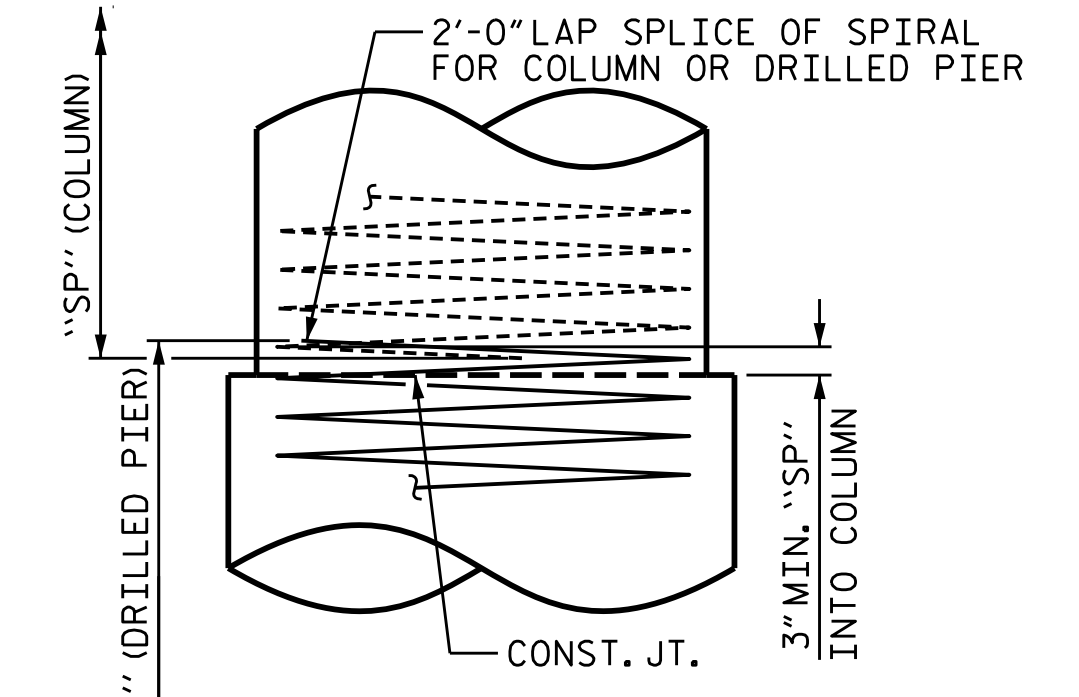


ELEVATION

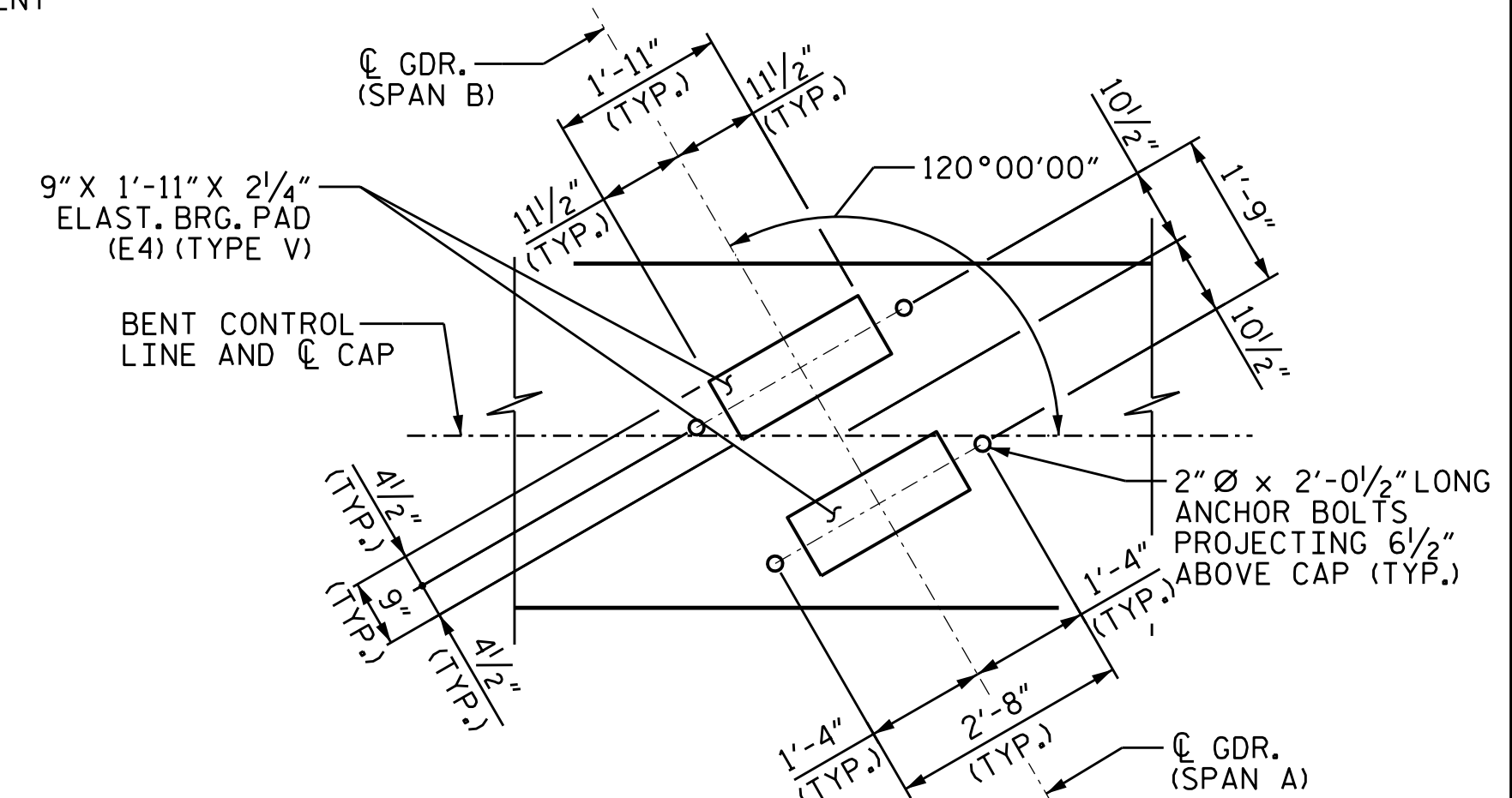
\* INVERT ALTERNATE PAIR OF STIRRUPS BETWEEN COLUMNS

NOTES

- STIRRUPS AND "U" BARS IN CAP MAY BE SHIFTED SLIGHTLY TO CLEAR ANCHOR BOLTS.
- ALL STEEL IN THE DRILLED PIERS IS INCLUDED IN THE PAY ITEMS FOR "REINFORCING STEEL" AND "SPIRAL COLUMN REINFORCING STEEL".
- FOR DRILLED PIERS AND PERMANENT STEEL CASING, SEE SECTION 411 OF THE STANDARD SPECIFICATIONS.
- THE CONTRACTOR'S ATTENTION IS CALLED TO THE FACT THAT THE LONGITUDINAL REINFORCEMENT FOR THE DRILLED PIERS IS DETAILED WITH 3 FEET OF EXTRA LENGTH.
- THE LOCATION OF THE CONSTRUCTION JOINT IN THE DRILLED PIERS AT BENTS 1 AND 2 IS BASED ON AN APPROXIMATE GROUND LINE ELEVATION. IF THE CONSTRUCTION JOINT IS ABOVE THE ACTUAL GROUND ELEVATION, THE CONTRACTOR SHALL PLACE THE CONSTRUCTION JOINT 1 FOOT BELOW THE GROUND LINE.
- FOR SECTIONS A-A AND B-B, AND CAP END VIEWS, SEE SHEET 2 OF 2.
- HOOKS ON "V" BARS MAY BE TURNED AS NECESSARY FOR PLACING REINFORCING STEEL.



CONSTRUCTION JOINT DETAIL



DETAIL "A"

PROJECT NO. **B-5717**  
**GUILFORD** COUNTY  
 STATION: **21+22.00 -L-**

SHEET 1 OF 2



STATE OF NORTH CAROLINA  
 DEPARTMENT OF TRANSPORTATION  
 RALEIGH

SUBSTRUCTURE

BENT 1

(RIGHT LANE)

REVISIONS				SHEET NO.	
NO.	BY:	DATE:	NO.	BY:	DATE:
1			3		
2			4		
					TOTAL SHEETS
					38

DOCUMENT NOT CONSIDERED FINAL UNLESS ALL SIGNATURES COMPLETED

