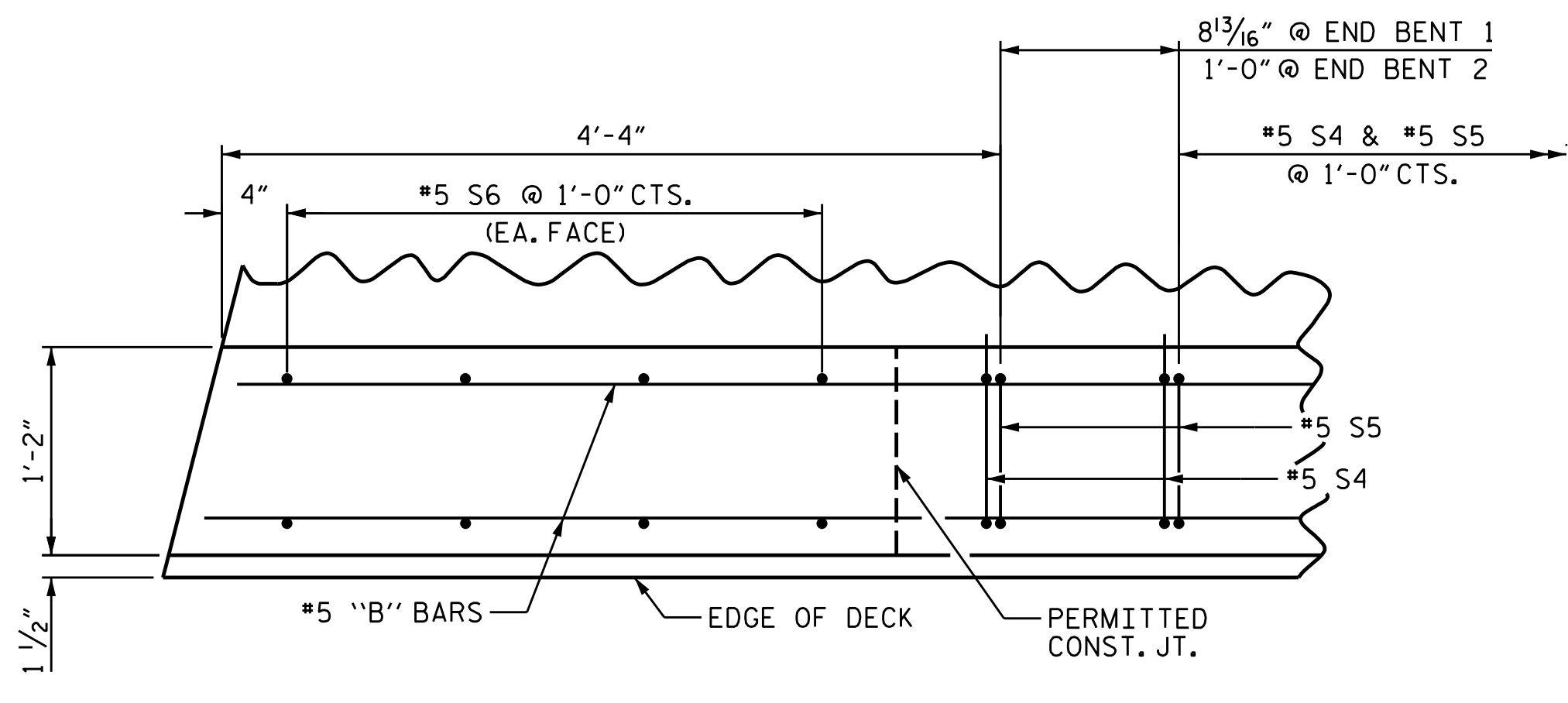
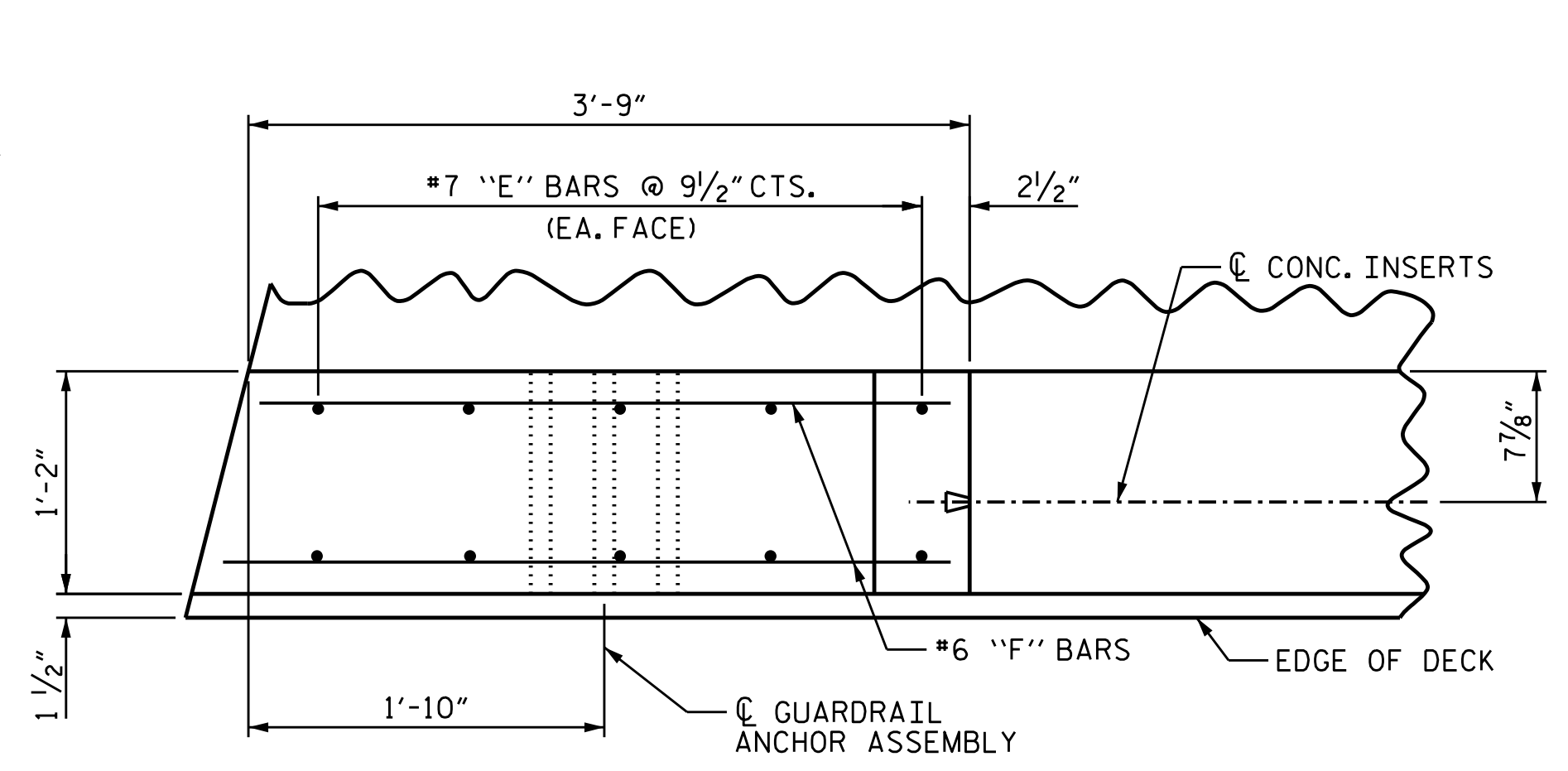


DATE: 3/31/2022
TIME: 3:26:04 PM

USER: gntn@acum.com
DIR: pva@acum.com
DRAWING: B-5717-000-CAD 6/5/910-CADVTOL-NCDDOT-TIP/Structures/04 Drawings/401_03T_B-5717-SMU-CBR3-S1-19_400/03.dgn



PLAN OF PARAPET



PLAN OF END POST

NOTES:

CONCRETE PARAPET IN A CONTINUOUS UNIT SHALL NOT BE CAST UNTIL ALL SLAB CONCRETE IN TAHT UNIT HAS BEEN CAST AND HAS REACHED A MINIMUM COMPRESSIVE STRENGTH OF 3,000 PSI.

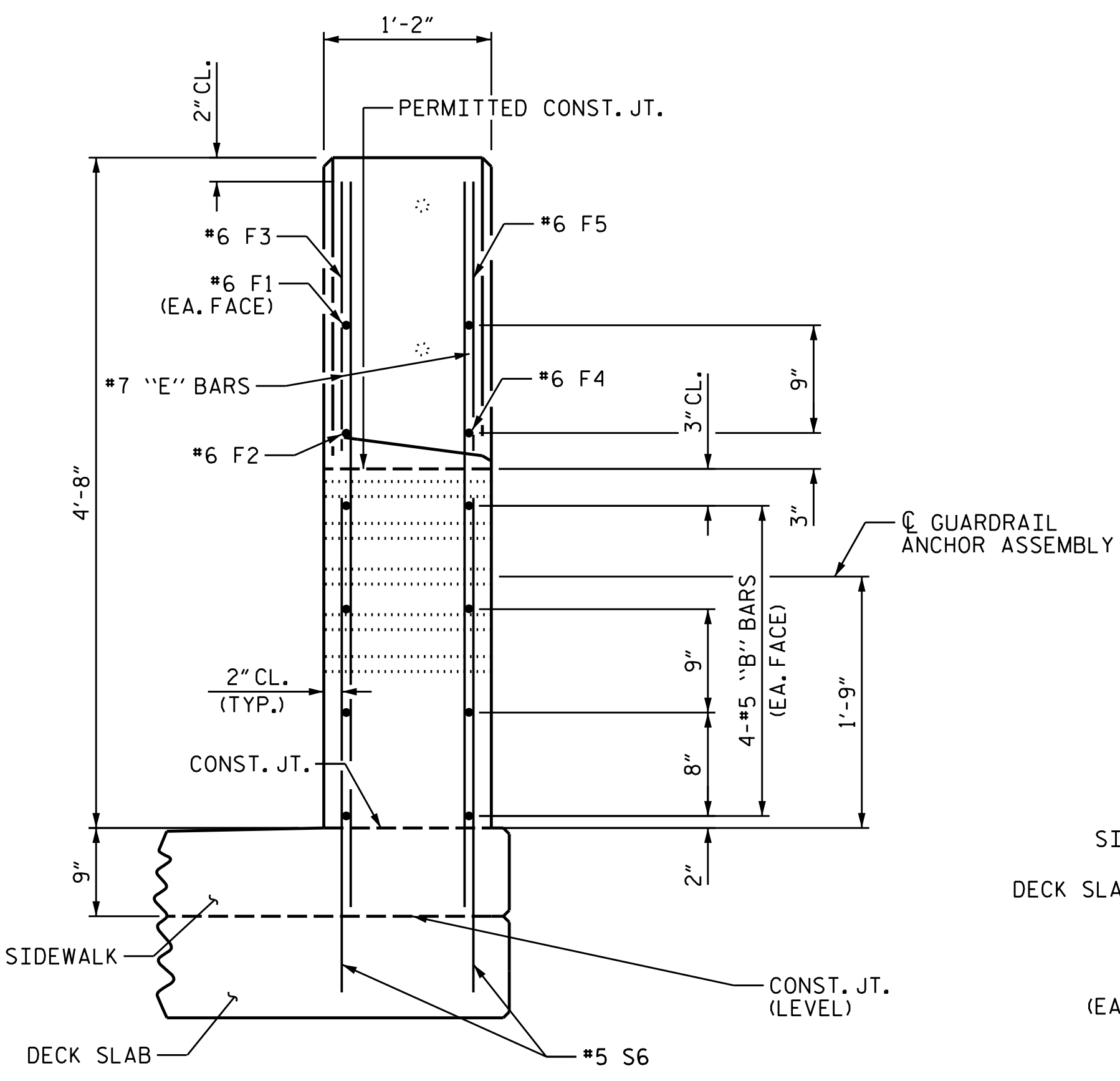
ALL REINFORCING STEEL IN PARAPETS AND END POSTS SHALL BE EPOXY COATED.

FOR DETAILS OF CONCRETE INSERTS IN END POSTS, SEE "RAIL POST SPACINGS AND END OF RAIL DETAILS" SHEET.

THE #5 S4 AND #5 S5 BARS MAY BE SHIFTED SLIGHTLY IN ORDER TO MAINTAIN A 2" MIN. CLEARANCE TO THE 1/2" EXPANSION JOINT MATERIAL IN PARAPET.

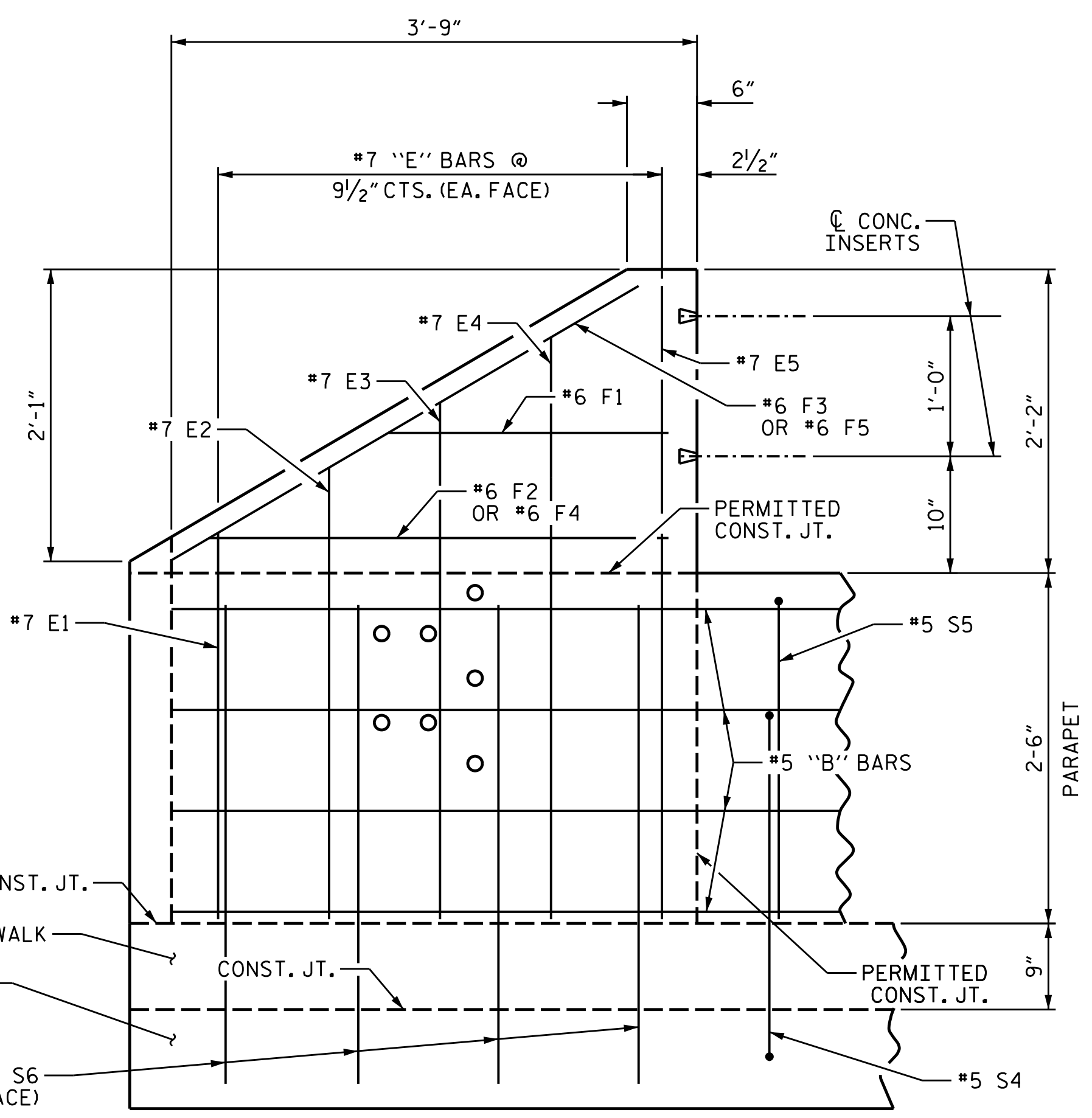
GROOVED CONTRACTION JOINTS 1/2" IN DEPTH, SHALL BE TOOLED IN ALL EXPOSED FACES OF THE PARAPET AND IN ACCORDANCE WITH ARTICLE 825-10(B) OF THE STANDARD SPECIFICATIONS. THE CONTRACTION JOINT SHALL BE LOCATED AT EACH THIRD POINT BETWEEN EXPANSION JOINTS. ONLY ONE CONTRACTION JOINT IS REQUIRED AT MIDPOINT OF PARAPET SEGMENTS LESS THAN 20 FEET IN LENGTH AND NO CONTRACTION JOINTS ARE REQUIRED FOR THOSE SEGMENTS LESS THAN 10 FEET IN LENGTH.

FOR DETAILS AND LOCATION OF GUARDRAIL ANCHOR ASSEMBLIES, SEE "GUARDRAIL ANCHORAGE DETAILS FOR METAL RAILS" SHEETS.



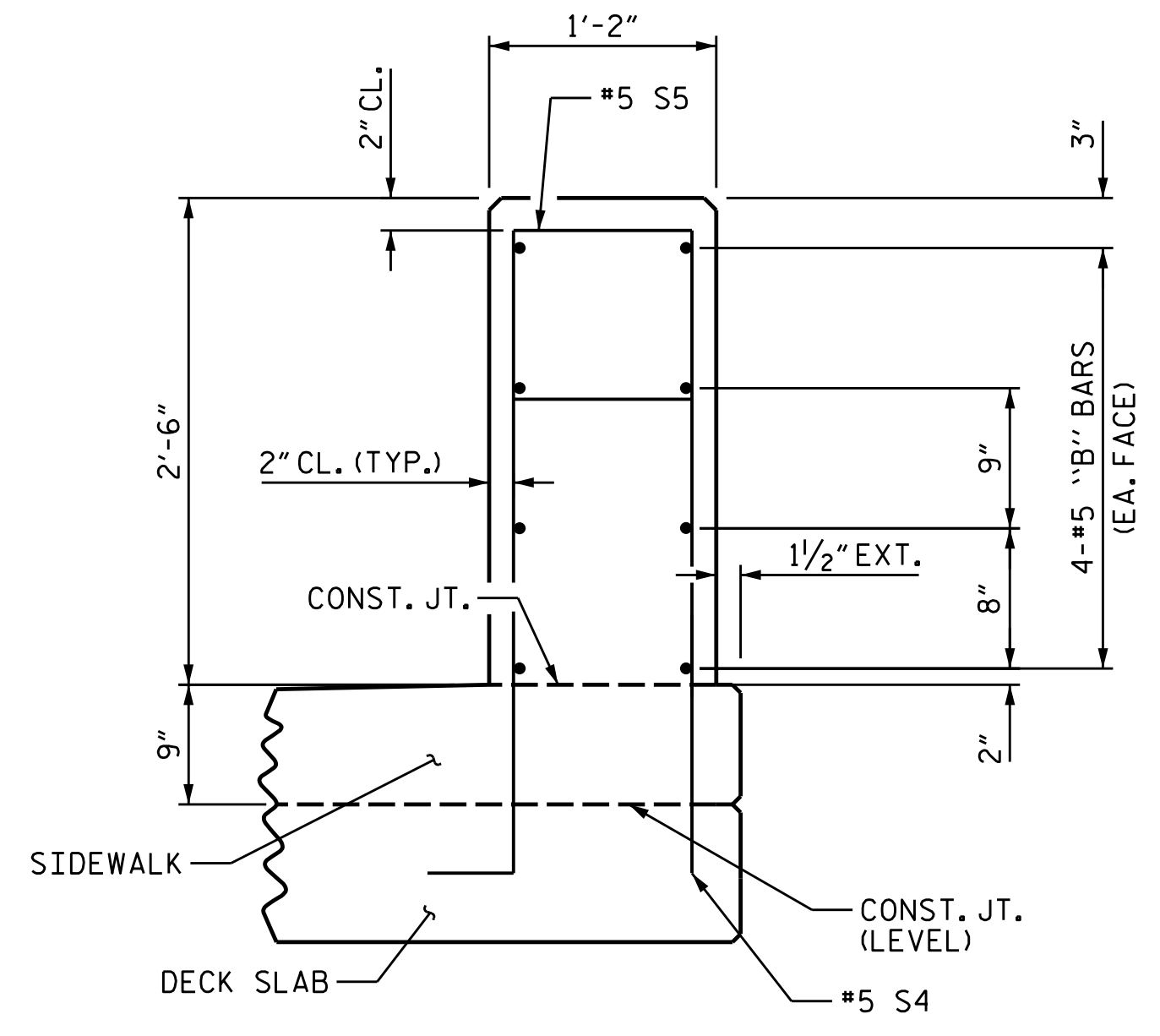
END VIEW

SHOWN AT END BENT 1, AT END BENT 2, F2/F4 BARS, F3/F5 BARS REVERSED.



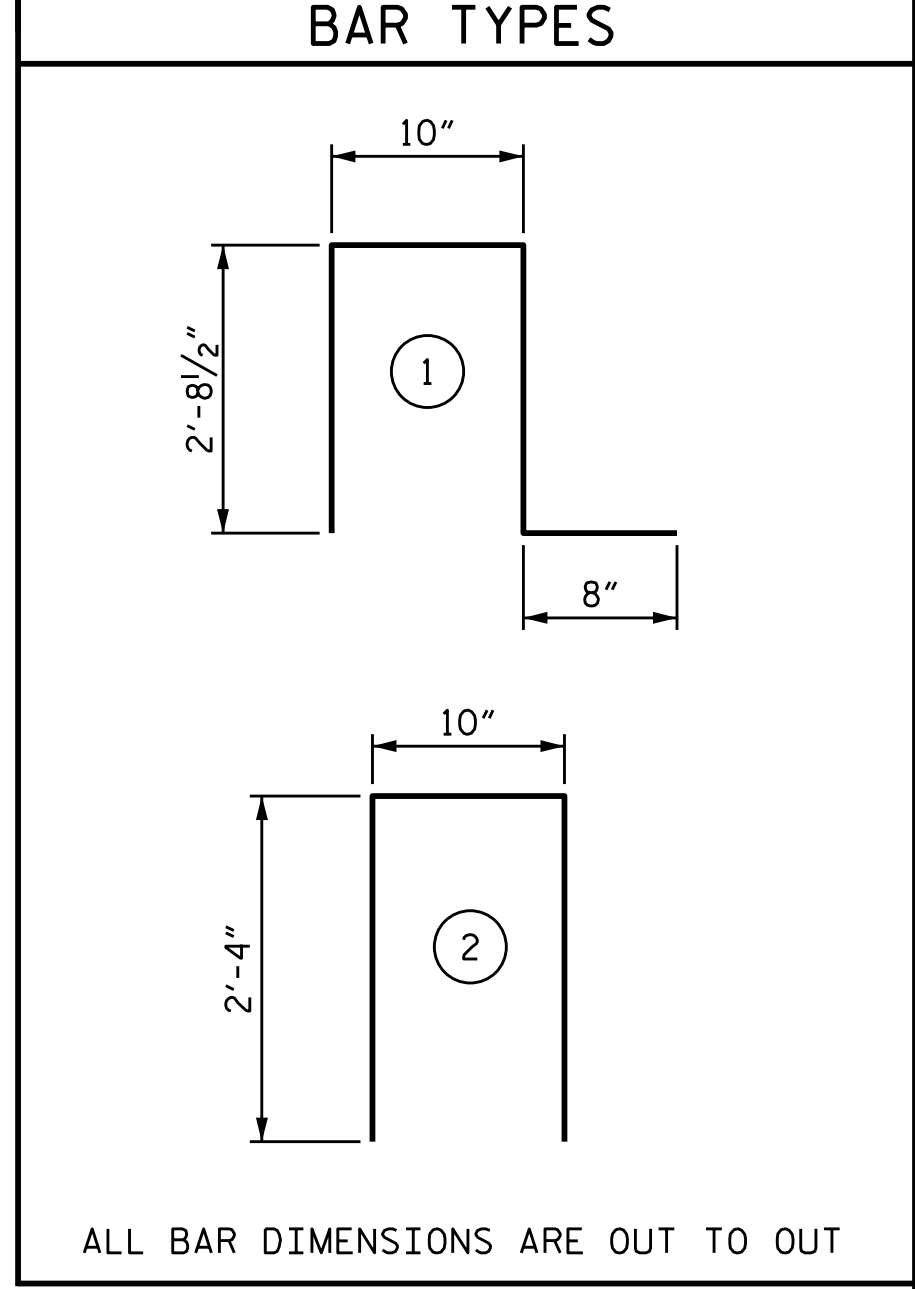
ELEVATION

SHOWN AT END BENT 1, END BENT 2 SIMILAR



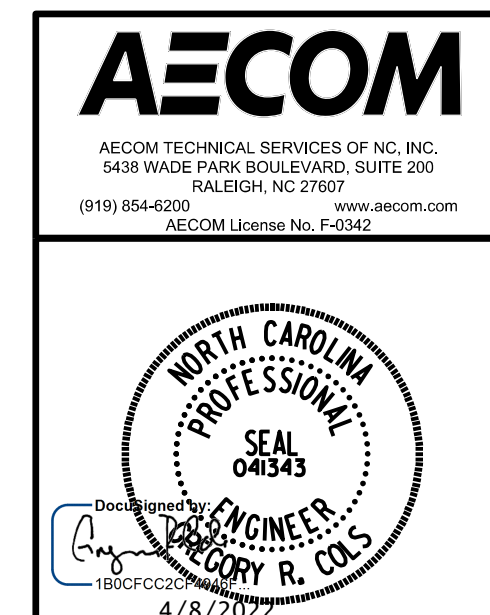
SECTION THRU PARAPET

BILL OF MATERIAL					
FOR CONCRETE PARAPET AND END POSTS ONLY					
BAR	NO.	SIZE	TYPE	LENGTH	WEIGHT
* B1	72	#5	STR	19'-7"	1471
* B2	16	#5	STR	8'-11"	149
* B3	16	#5	STR	11'-5"	191
* E1	4	#7	STR	2'-6"	20
* E2	4	#7	STR	3'-0"	24
* E3	4	#7	STR	3'-6"	29
* E4	4	#7	STR	4'-0"	33
* E5	4	#7	STR	4'-4"	35
* F1	4	#6	STR	2'-2"	13
* F2	2	#6	STR	2'-9"	8
* F3	2	#6	STR	3'-5"	10
* F4	2	#6	STR	3'-6"	10
* F5	2	#6	STR	4'-3"	13
* S4	205	#5	1	6'-11"	1479
* S5	205	#5	2	5'-6"	1176
* S6	16	#5	STR	3'-9"	63
* EPOXY COATED REINFORCING STEEL				4661 LBS.	
CLASS AA CONCRETE				23.4 CU. YDS.	
2'-6" CONCRETE PARAPET				213.07 LIN. FT.	



PROJECT NO. B-5717
GUILFORD COUNTY
 STATION: 21+22.00 -L-

SHEET 3 OF 3



STATE OF NORTH CAROLINA
 DEPARTMENT OF TRANSPORTATION
 RALEIGH
 SUPERSTRUCTURE
 PARAPET AND END POST
 DETAILS FOR TWO BAR
 METAL RAIL
(RIGHT LANE)

REVISIONS						SHEET NO.
NO.	BY:	DATE:	NO.	BY:	DATE:	SHEET NO.
1			3			SI-19
2			4			TOTAL SHEETS 38

DRAWN BY : B.D. HODACK DATE : 05/2021
 CHECKED BY : S. NATARAJAN DATE : 05/2021
 DESIGNED BY : B.D. HODACK DATE : 05/2021
 DESIGN CHECKED BY : S. NATARAJAN DATE : 05/2021

DOCUMENT NOT CONSIDERED FINAL UNLESS ALL SIGNATURES COMPLETED