

DATE: 3/15/2022
TIME: 3:06:56 PM

USER: pntn\csm
DIR: pva\ecom-nt-pw\enr\com\AECOM_DS21_ML_2020\Documents\60592827-NCDDT_SMU_B-5717\B00-CAD_615910_CAD\TO_NCDDT_TIP\Structures\04_Drawing\01_035_B-5717_SMU_CBR2_S1-18_40000.dgn

NOTES

THE BARRIER RAIL IN EACH SPAN SHALL NOT BE CAST UNTIL ALL SLAB CONCRETE IN THAT SPAN HAS BEEN CAST AND HAS REACHED A MINIMUM COMPRESSIVE STRENGTH OF 3,000 PSI.

ALL REINFORCING STEEL IN BARRIER RAILS SHALL BE EPOXY COATED.

GROOVED CONTRACTION JOINTS, 1/2" IN DEPTH, SHALL BE TOOLED IN ALL EXPOSED FACES OF THE BARRIER RAIL AND IN ACCORDANCE WITH ARTICLE 825-10(B) OF THE STANDARD SPECIFICATIONS, THE CONTRACTION JOINT SHALL BE LOCATED AT EACH THIRD POINT BETWEEN BARRIER RAIL EXPANSION JOINTS. ONLY ONE CONTRACTION JOINT IS REQUIRED AT MIDPOINT OF BARRIER RAIL SEGMENTS LESS THAN 20 FEET IN LENGTH AND NO CONTRACTION JOINTS ARE REQUIRED FOR THOSE SEGMENTS LESS THAN 10 FEET IN LENGTH.

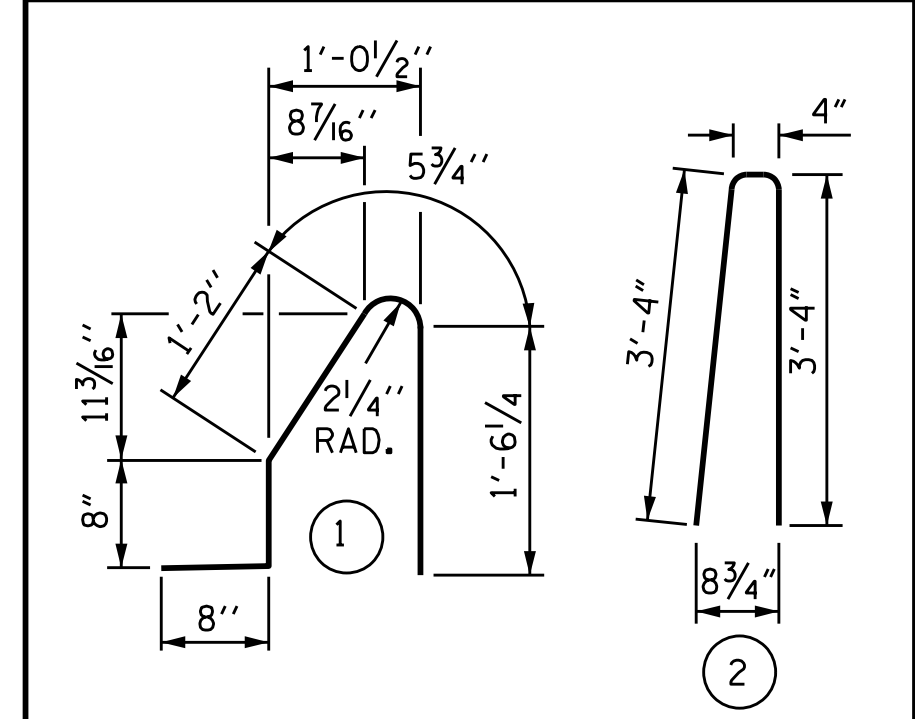
THE #5 S1 AND #5 S2 BARS MAY BE SHIFTED SLIGHTLY IN ORDER TO MAINTAIN A 2" MIN. CLEARANCE TO THE 1/2" EXPANSION JOINT MATERIAL IN PARAPET.

BILL OF MATERIAL

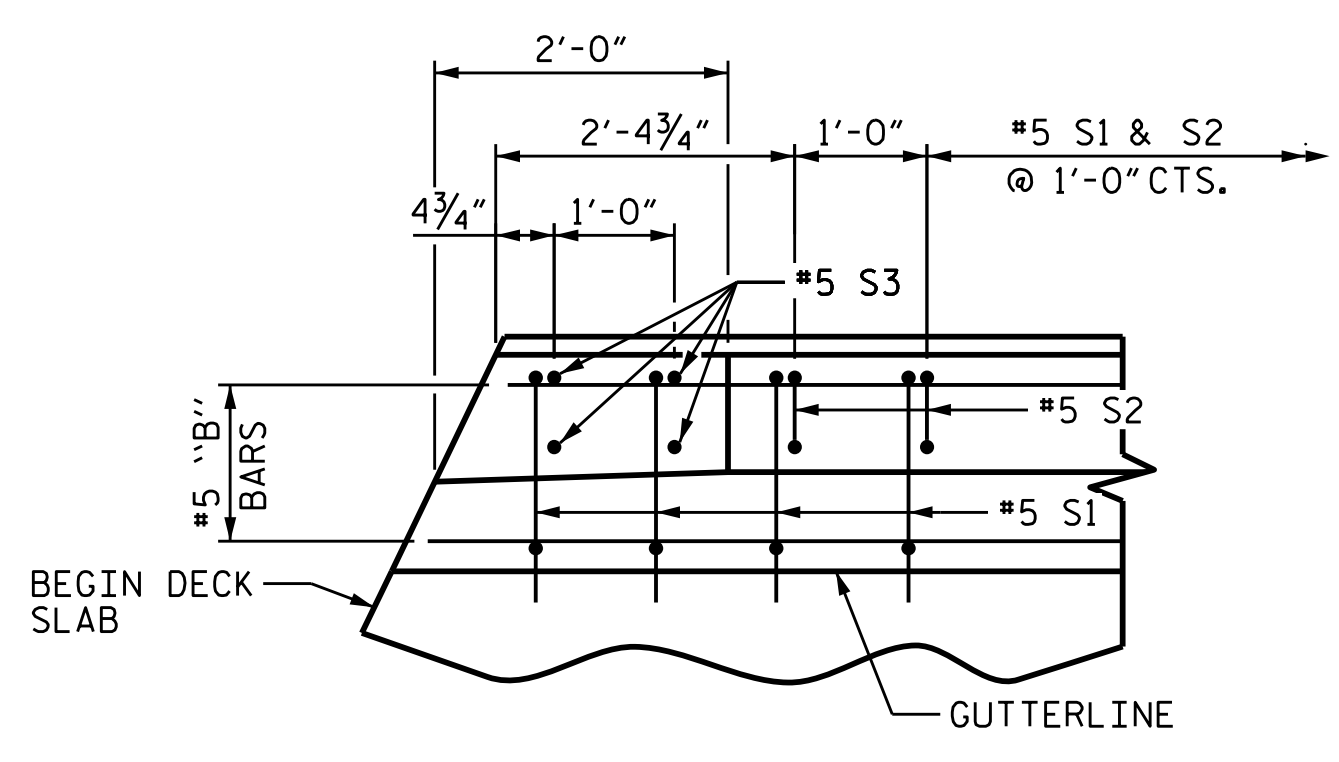
FOR CONCRETE BARRIER RAIL ONLY					
BAR	NO.	SIZE	TYPE	LENGTH	WEIGHT
* B1	99	#5	STR	19'-7"	2022
* B2	22	#5	STR	8'-11"	205
* B3	22	#5	STR	11'-5"	262
* S1	213	#5	1	4'-6"	1000
* S2	209	#5	2	7'-0"	1526
* S3	8	#5	STR	2'-7"	22

* EPOXY COATED REINFORCING STEEL	5037
CLASS AA CONCRETE	29.0 CU. YDS.
CONCRETE BARRIER RAIL	213.07 LTN. FT.

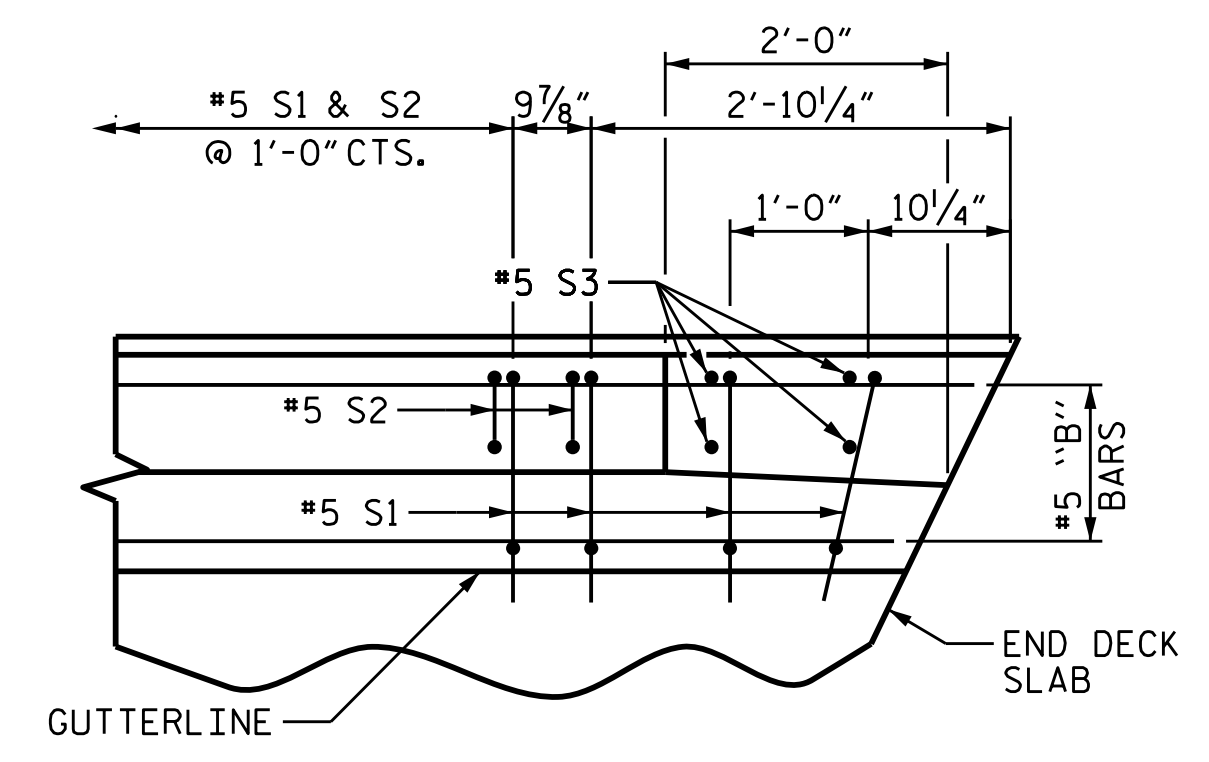
BAR TYPES



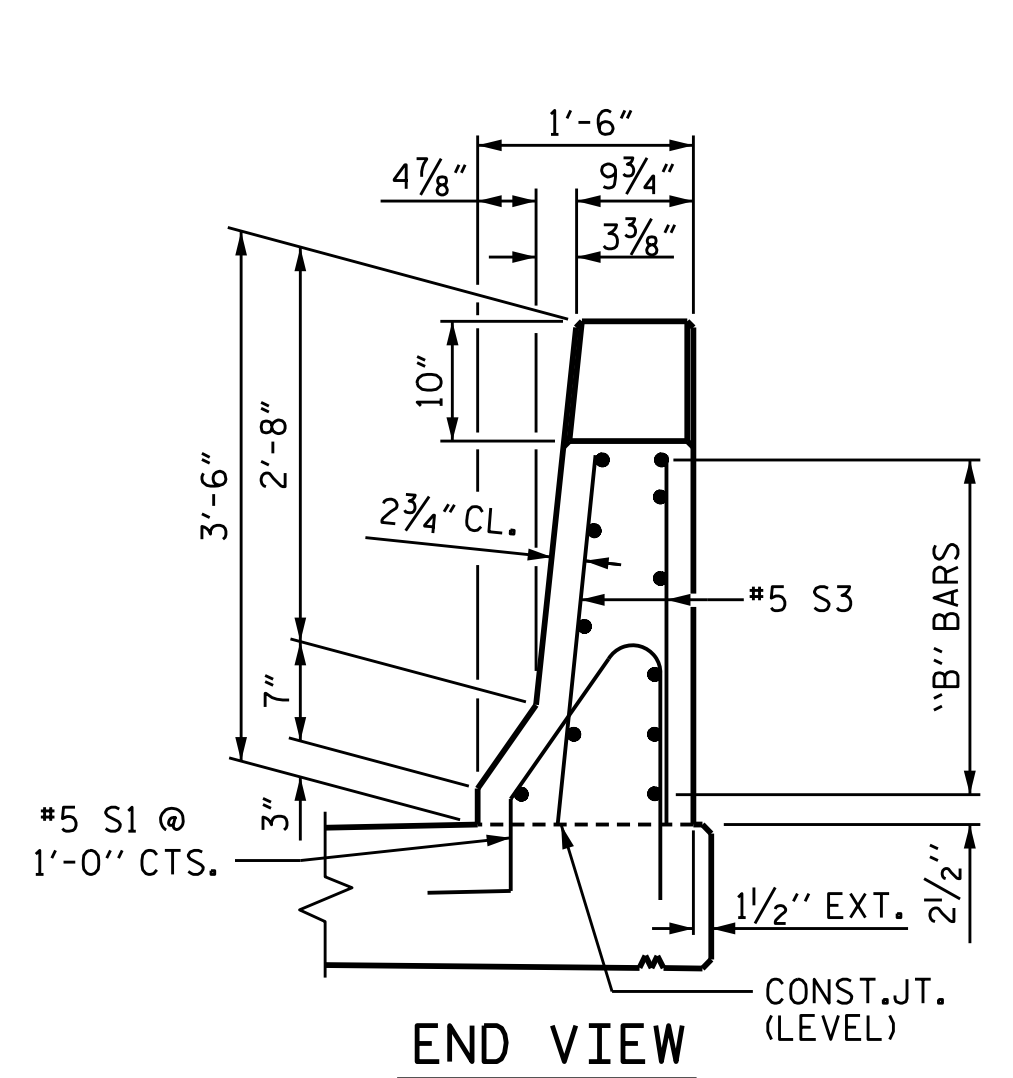
ALL BAR DIMENSIONS ARE OUT TO OUT



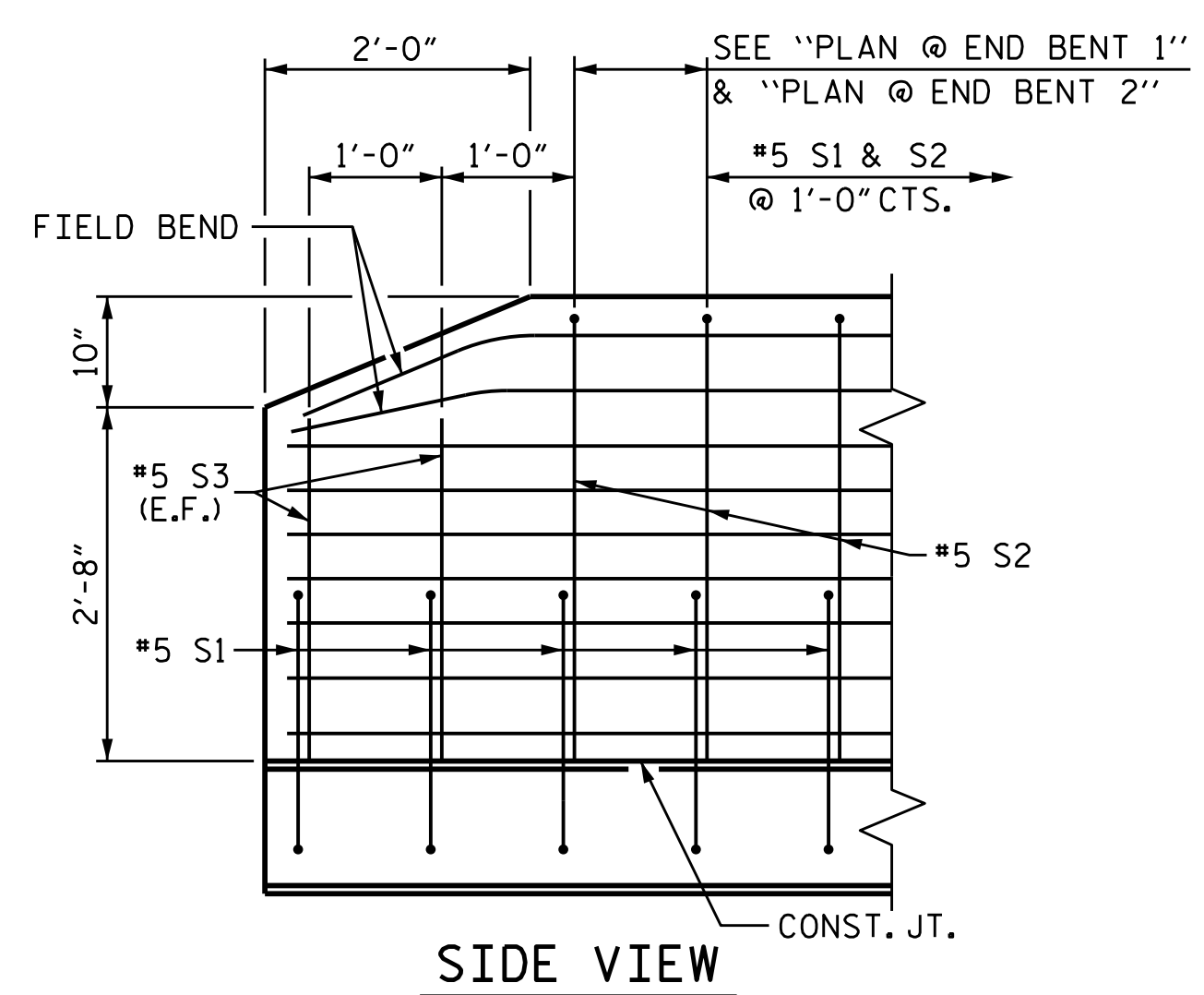
PLAN @ END BENT 1



PLAN @ END BENT 2

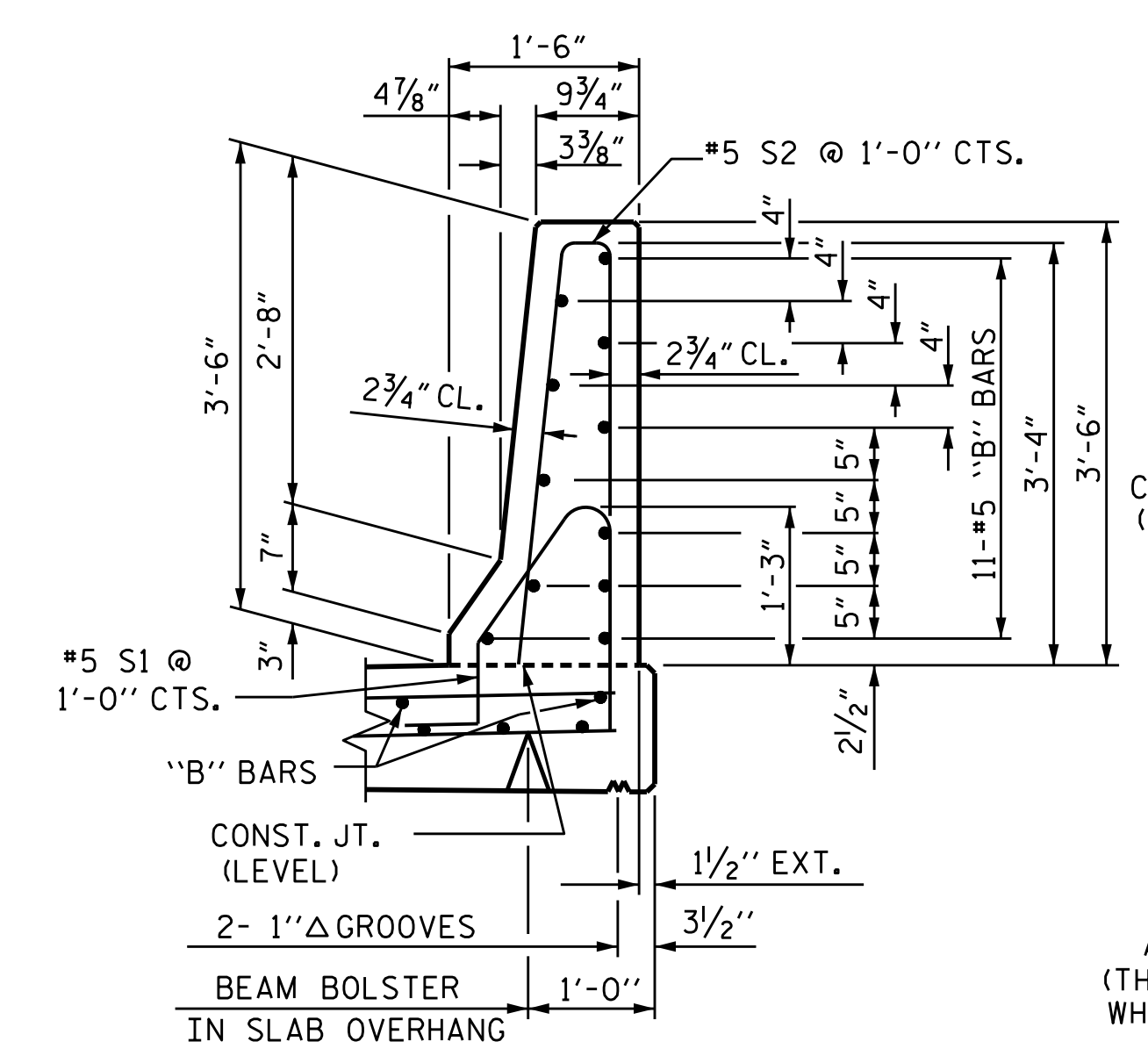


END VIEW

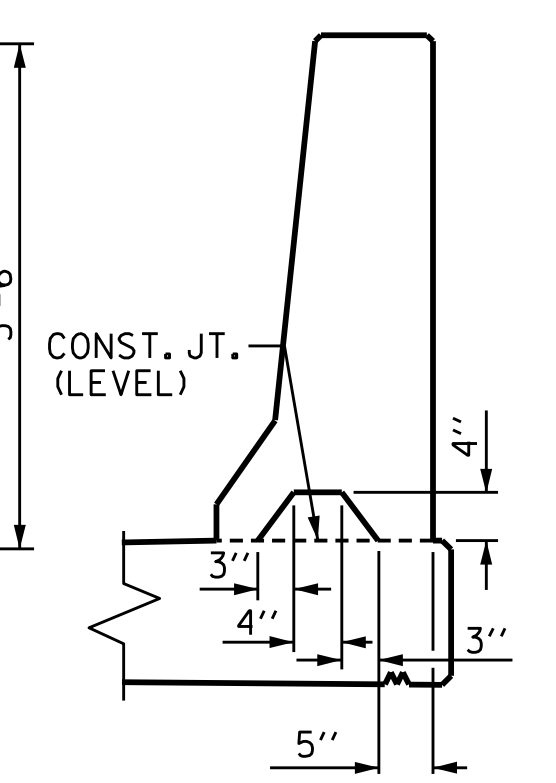


SIDE VIEW

END OF RAIL DETAILS

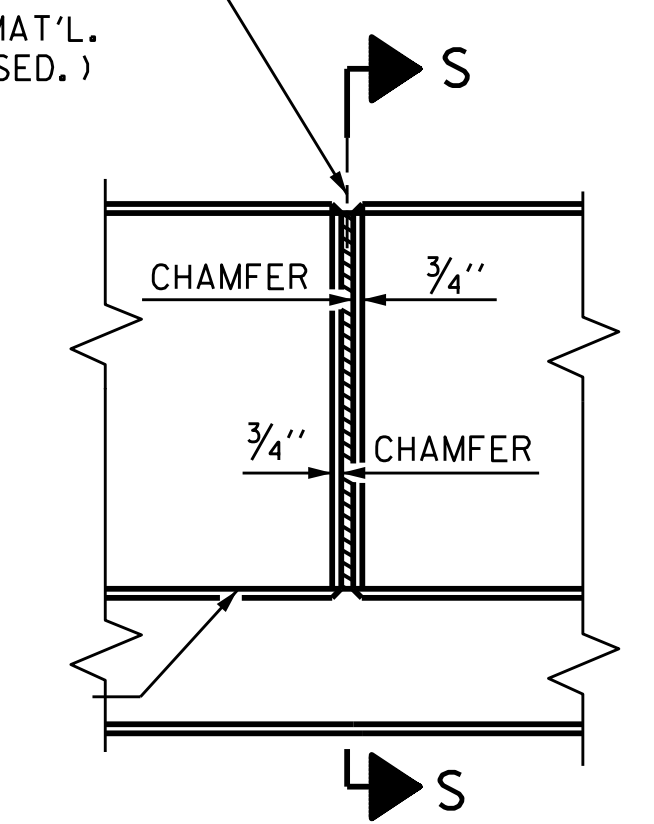


SECTION THRU RAIL



SECTION S-S
AT DAM IN OPEN JOINT
(THIS IS TO BE USED ONLY WHEN SLIP FORM IS USED)

1/2" EXP. JT. MAT'L HELD IN PLACE WITH GALVANIZED NAILS.
(NOTE: OMIT EXP. JT. MAT'L. WHEN SLIP FORM IS USED.)



ELEVATION AT EXPANSION JOINTS
BARRIER RAIL DETAILS

PROJECT NO. B-5717
GUILFORD COUNTY
STATION: 21+22.00 -L-

SHEET 2 OF 3

AECOM
AECOM TECHNICAL SERVICES OF NC, INC.
5438 WADE PARK BOULEVARD, SUITE 200
RALEIGH, NC 27607
(919) 854-6200 www.aecom.com
AECOM License No. F-0542

Doc. prepared by:
REGINA M. GREGORY, P.E.
REGISTERED PROFESSIONAL ENGINEER
NORTH CAROLINA
SEAL 041543
4/8/2022

STATE OF NORTH CAROLINA
DEPARTMENT OF TRANSPORTATION
RALEIGH
STANDARD
CONCRETE BARRIER RAIL
(RIGHT LANE)

REVISIONS				SHEET NO.	
NO.	BY:	DATE:	NO.	BY:	DATE:
1			3		
2			4		

TOTAL SHEETS 38

DOCUMENT NOT CONSIDERED FINAL UNLESS ALL SIGNATURES COMPLETED

ASSEMBLED BY : B.D. HODACK	DATE : 05/2021
CHECKED BY : S. NATARAJAN	DATE : 08/2021
DRAWN BY : ARB 5/87	REV. 7/12 MAA/GM
CHECKED BY : SJD 9/87	REV. 6/13 MAA/GM
	REV. 12/17 MAA/THC