

Pls Sta 16+80.16
 $\theta_s = 2^\circ 51' 53.2''$
 $L_s = 200.00'$
 $LT = 133.35'$
 $ST = 66.68'$

Pls Sta 24+44.47
 $\Delta = 1^\circ 35' 19.6''$ (LT)
 $D = 0^\circ 34' 22.6''$
 $L_s = 200.00'$
 $LT = 133.33'$
 $T = 138.65'$
 $R = 10,000.00'$
 $e = NC$

Pls Sta 26+49.78
 $\theta_s = 0^\circ 34' 22.6''$
 $L_s = 200.00'$
 $LT = 133.33'$
 $ST = 66.67'$

Pls Sta 29+71.34
 $\Delta = 1^\circ 32' 43.3''$ (RT)
 $D = 3^\circ 36' 53.6''$
 $L = 374.71'$
 $T = 188.23'$
 $R = 1,585.00'$

NOTE: PLACE TEMPORARY ROCK SEDIMENT DAMS TYPE - B AND TEMPORARY ROCK SILT CHECKS TYPE - A AT DRAINAGE OUTLETS.

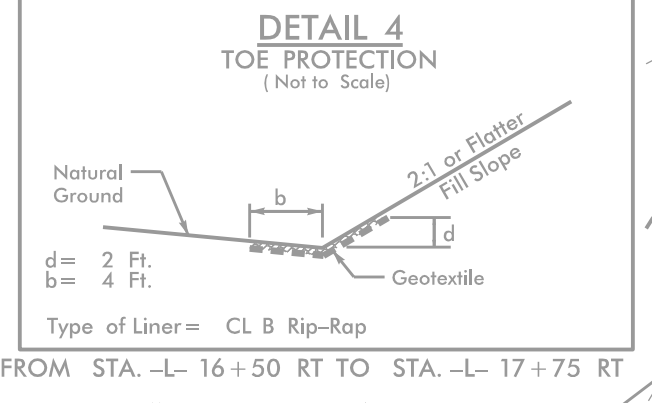
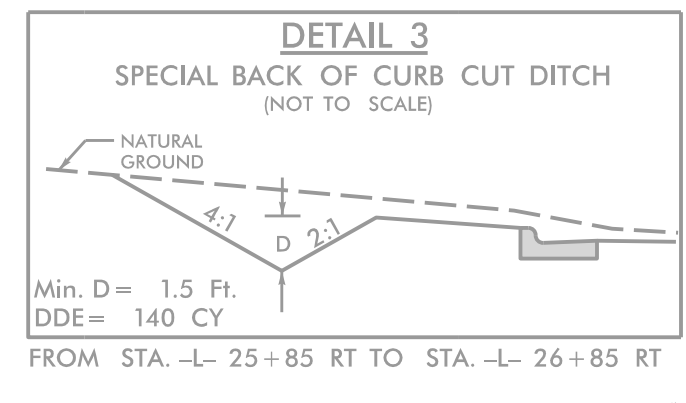
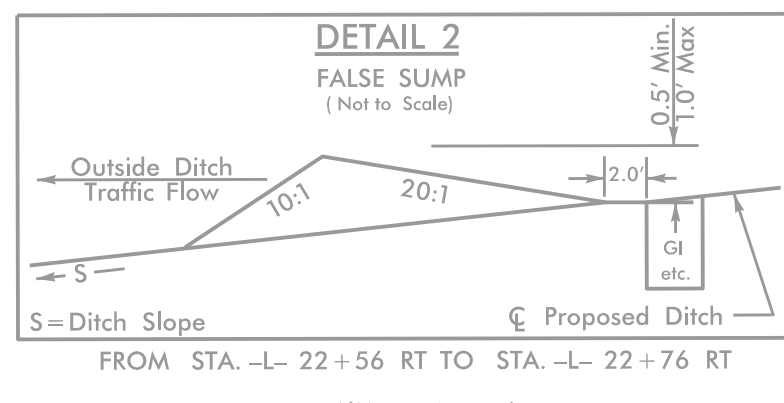
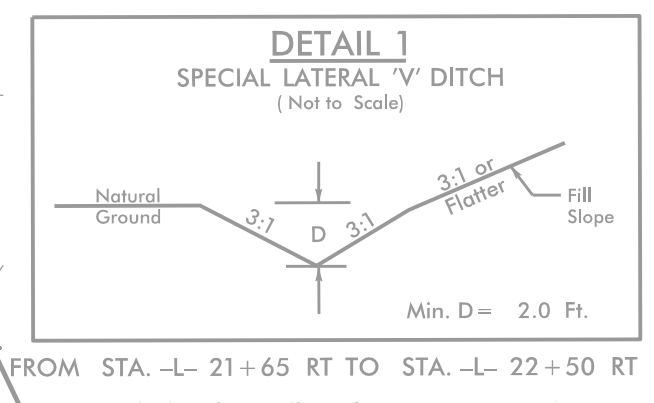
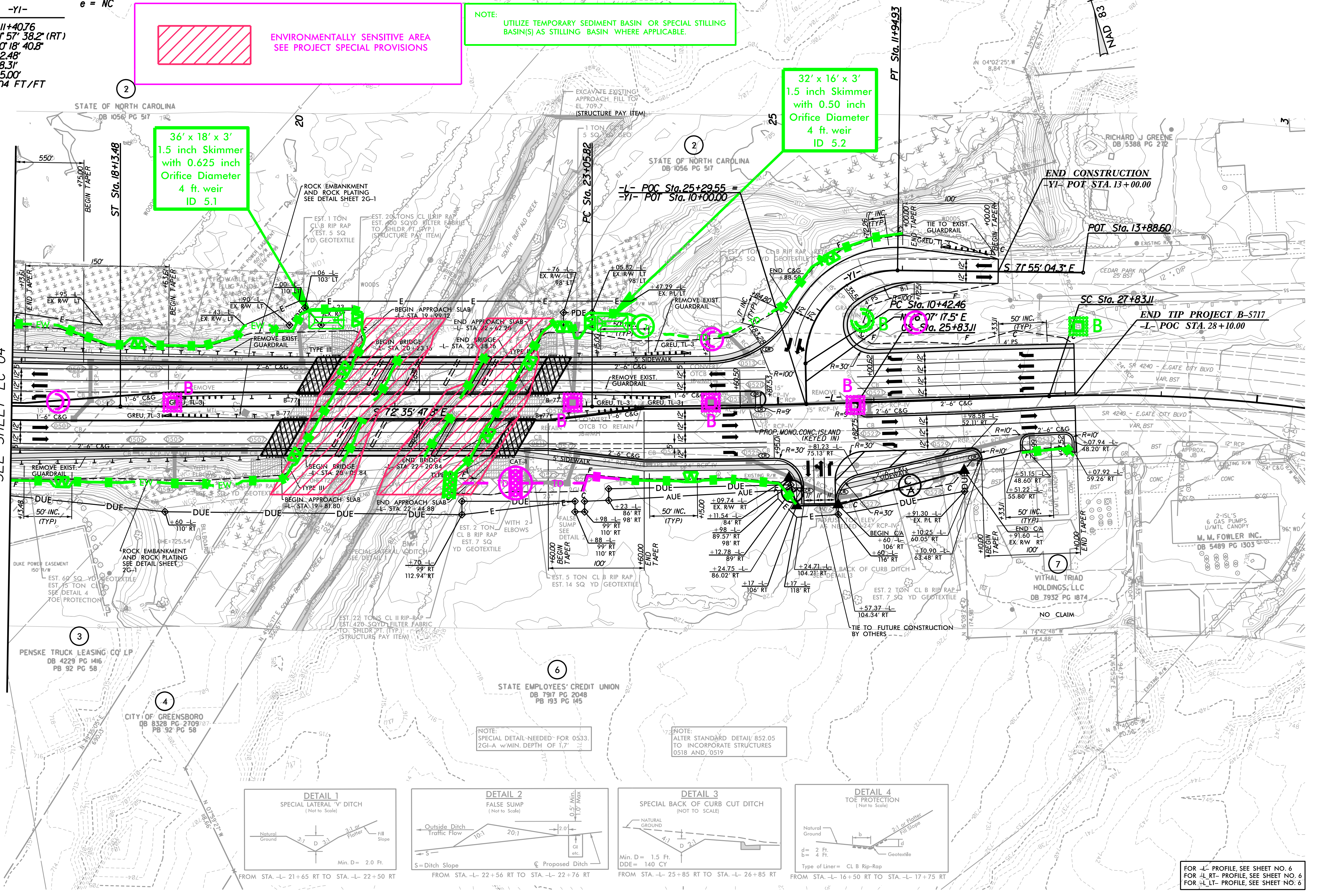
CLEARING AND GRUBBING EROSION CONTROL FOR CONSTRUCTION SHEET 5

ENVIRONMENTALLY SENSITIVE AREA SEE PROJECT SPECIAL PROVISIONS

NOTE: UTILIZE TEMPORARY SEDIMENT BASIN OR SPECIAL STILLING BASIN(S) AS STILLING BASIN WHERE APPLICABLE.

-YI-
 Pls Sta 11+40.76
 $\Delta = 9^\circ 57' 38.2''$ (RT)
 $D = 60^\circ 18' 40.8''$
 $L = 152.48'$
 $T = 98.31'$
 $R = 95.00'$
 $e = 0.04$ FT/FT

MATCHLINE -L- 17+00
SEE SHEET EC-04



FOR -L- PROFILE, SEE SHEET NO. 6
FOR -L- RT- PROFILE, SEE SHEET NO. 6
FOR -L- LT- PROFILE, SEE SHEET NO. 6

5/14/2019
 10:57:42 PM
 B-5717-05-CAD GIS 910-CAD 700-NCDOT_TIP-Erosion Control\Design\230-B5717-EC_PSH05.CG.dgn