

PI Sta 11+38.60
 $\Delta = 5' 20'' 27.8''$ (LT)
 $D = 1' 55'' 41.5''$
 $L = 277.00'$
 $T = 138.60'$
 $R = 2971.46'$

PIs Sta 14+10.35
 $\Theta_s = 2' 51'' 53.2''$
 $L_s = 200.00'$
 $LT = 133.35'$
 $ST = 66.68'$

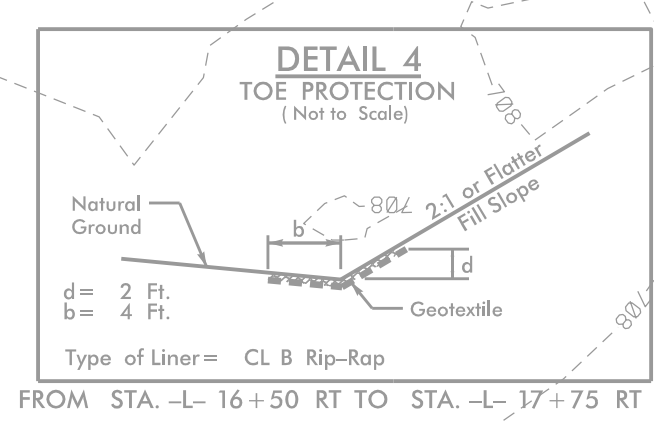
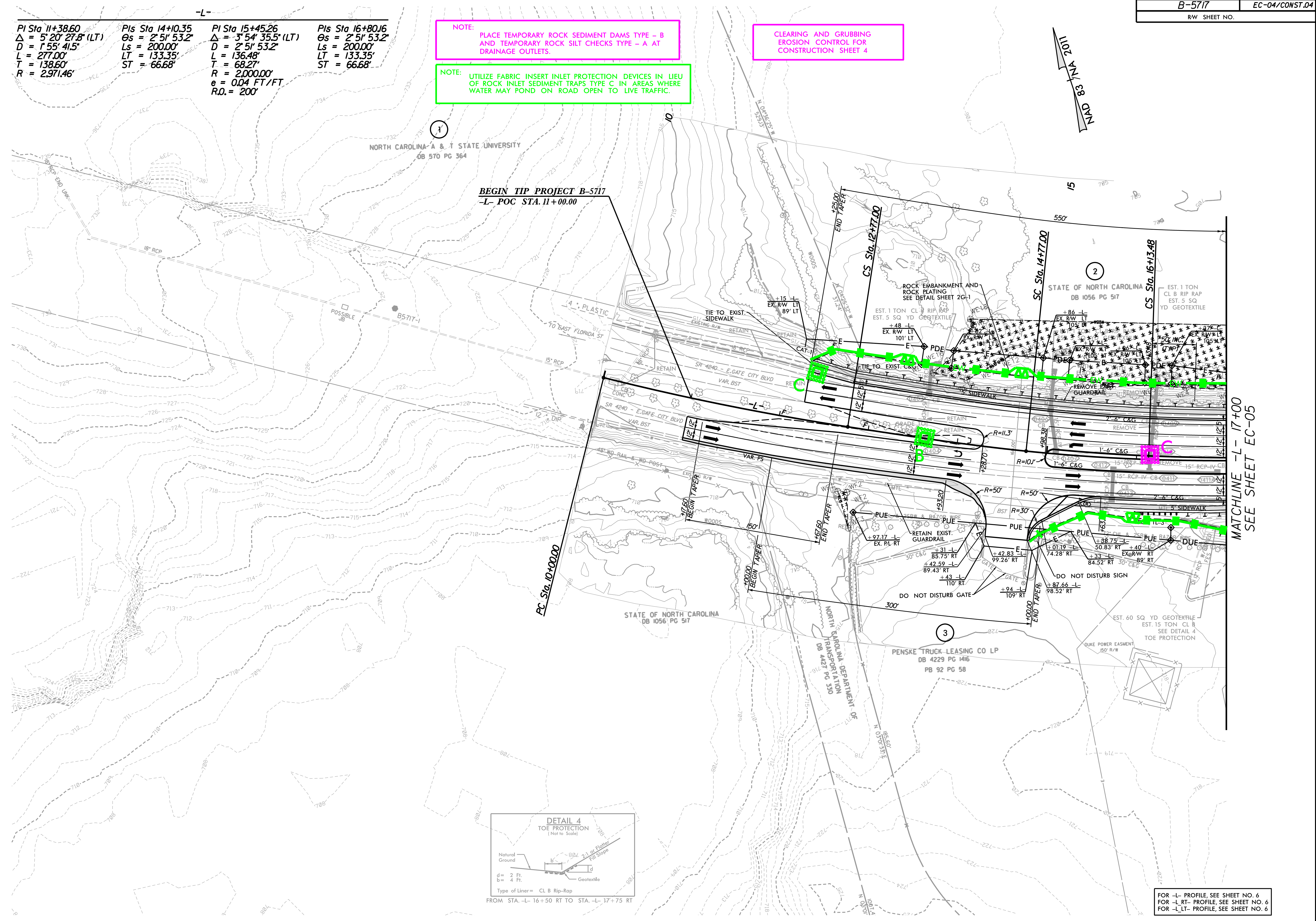
PI Sta 15+45.26
 $\Delta = 3' 54'' 35.5''$ (LT)
 $D = 2' 51'' 53.2''$
 $L = 136.48'$
 $T = 68.27'$
 $R = 2000.00'$
 $e = 0.04$ FT/FT
 $R.O. = 200'$

PIs Sta 16+80.16
 $\Theta_s = 2' 51'' 53.2''$
 $L_s = 200.00'$
 $LT = 133.35'$
 $ST = 66.68'$

NOTE: PLACE TEMPORARY ROCK SEDIMENT DAMS TYPE - B AND TEMPORARY ROCK SILT CHECKS TYPE - A AT DRAINAGE OUTLETS.

NOTE: UTILIZE FABRIC INSERT INLET PROTECTION DEVICES IN LIEU OF ROCK INLET SEDIMENT TRAPS TYPE C IN AREAS WHERE WATER MAY POND ON ROAD OPEN TO LIVE TRAFFIC.

CLEARING AND GRUBBING EROSION CONTROL FOR CONSTRUCTION SHEET 4



FOR -L- PROFILE, SEE SHEET NO. 6
 FOR -L-RT- PROFILE, SEE SHEET NO. 6
 FOR -L-LT- PROFILE, SEE SHEET NO. 6

MATCHLINE -L- 17+00
 SEE SHEET EC-05

5/14/99
 3:57:10 PM
 9592827-NCDDOT-TIP-Erosion Control\Design\230-B5717-EC-PSH04.CG.dgn