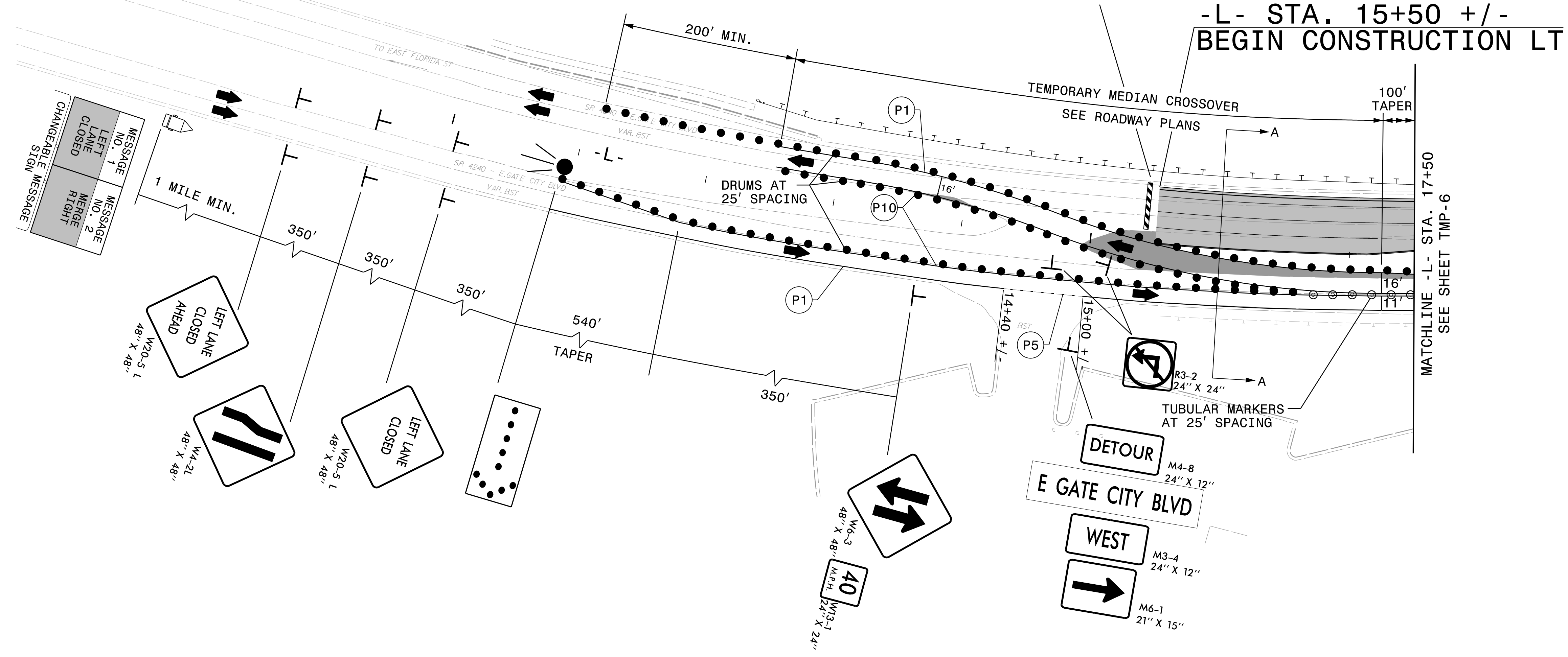
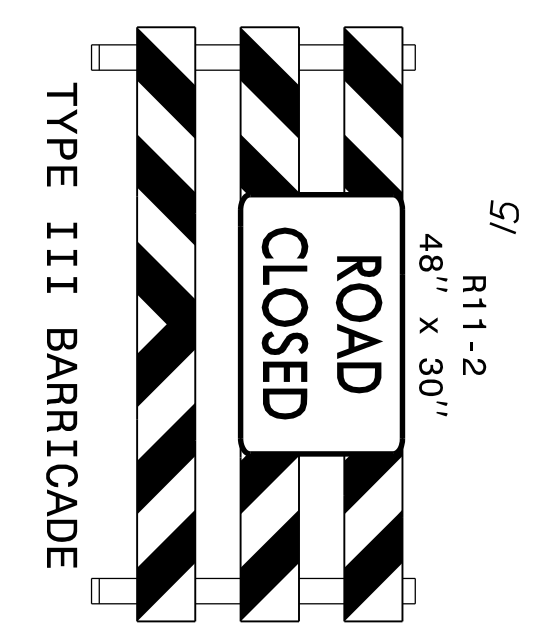
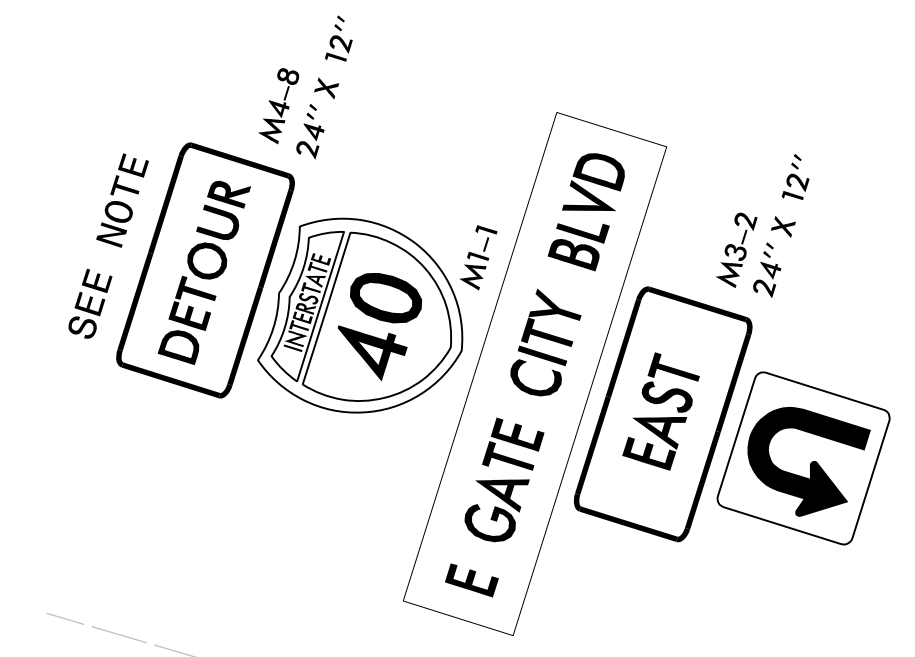
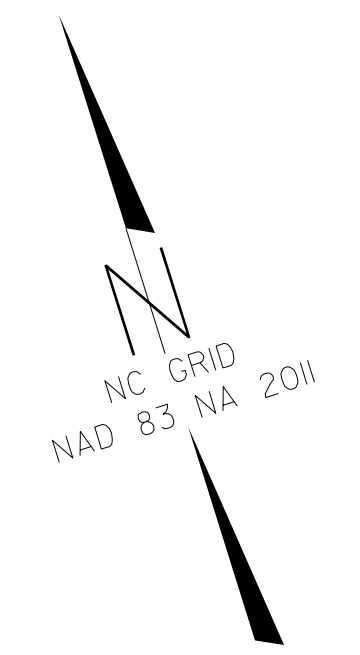
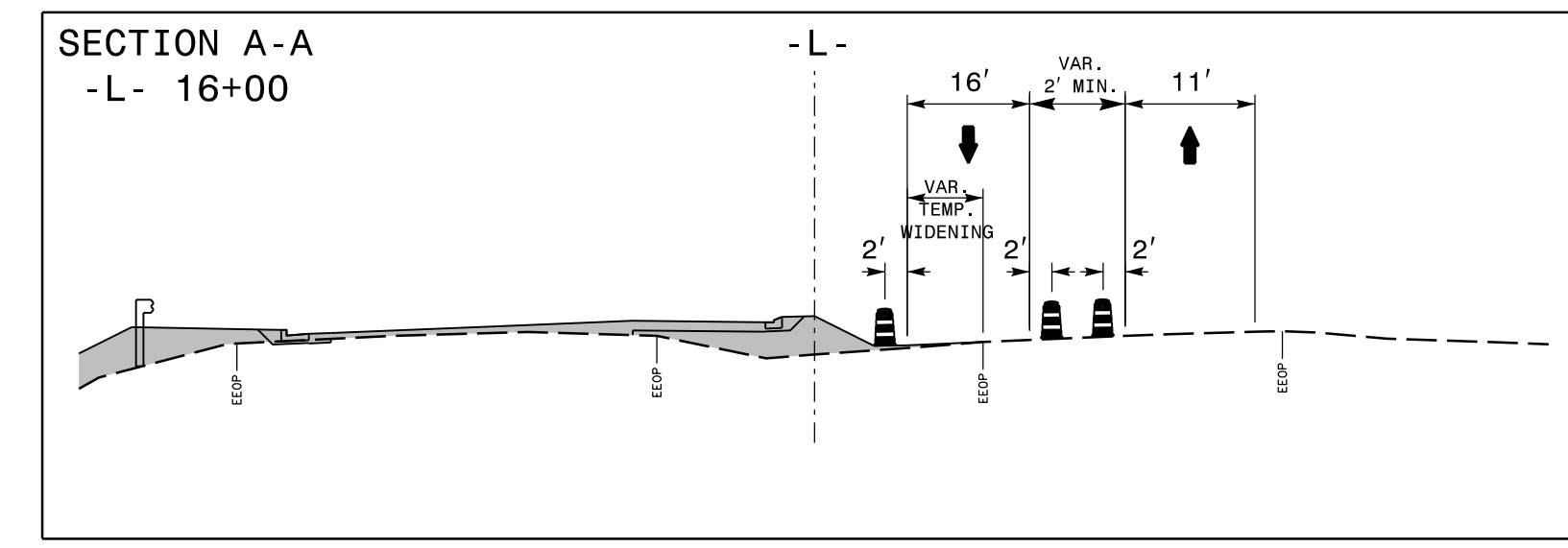


NOTE: LOCATE SIGNS AT THE INTERSECTION OF E. GATE CITY BLVD(SR 4240) AND E. FLORIDA STREET OR AS DIRECTED BY THE ENGINEER

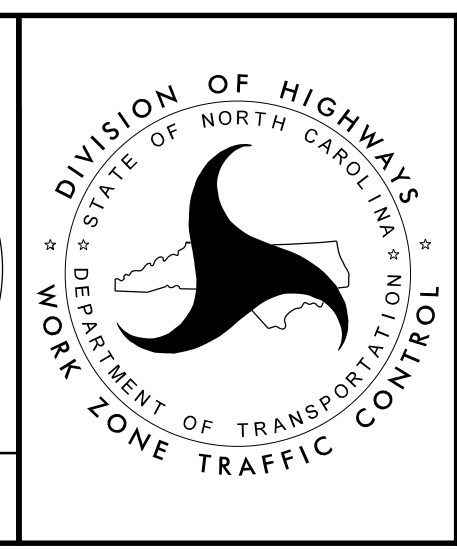


4/14/2022 10:46:00 AM C:\Users\pwbentley\Documents\AECOM\DS2\LA\_2020\Documents\60592827-NCDDT\_SMU\_B-5717\900-CAD\_GIS\910-CAD\_TO\_NCDOT\_TIP\TrafficControl\TCP\B5717\_TC\_TMP\_PSH\_05\_Phase\_I.dgn Tim.Klotz

APPROVED: *Timothy D. Kelly*  
 DATE: 4/25/2022

SEAL

DOCUMENT NOT CONSIDERED FINAL  
UNLESS ALL SIGNATURES COMPLETED



PHASE I DETAIL

WORK ZONE TRAFFIC CONTROL