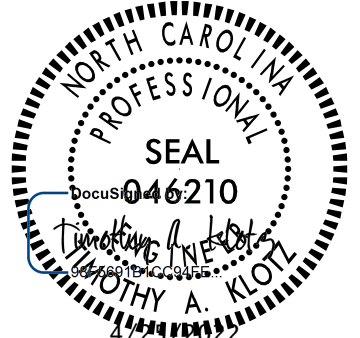
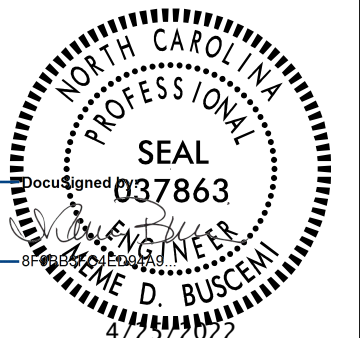


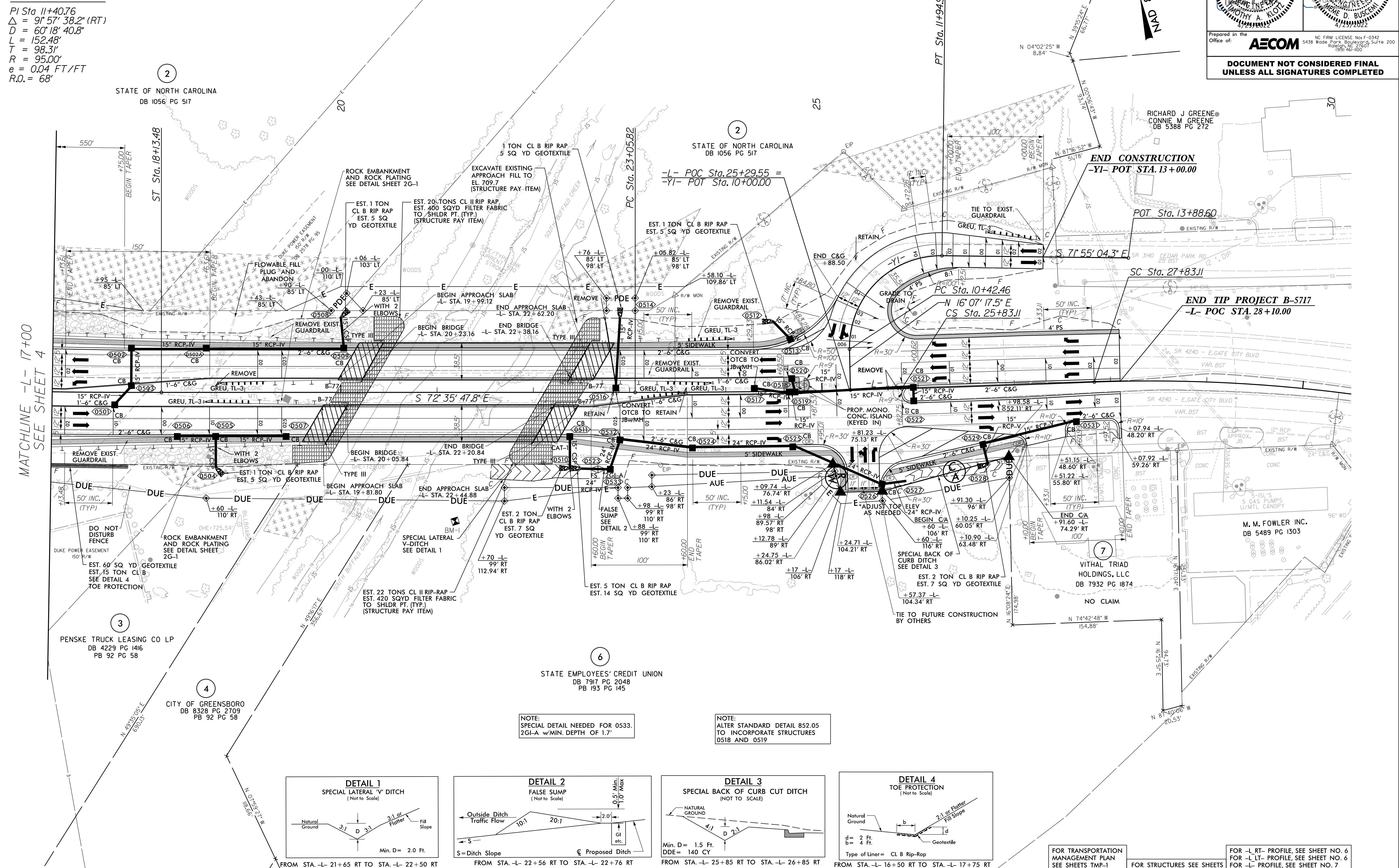
| | | | |
|---|--|---|--|
| PROJECT REFERENCE NO. B-5717 | | SHEET NO. 5 | |
| ROADWAY DESIGN ENGINEER | | HYDRAULICS ENGINEER | |
|  | |  | |
| Prepared in the Office of: AECOM NC FIRM LICENSE No. F-0342 5438 Wade Park Boulevard, Suite 200 Raleigh, NC 27607 (919) 461-0000 | | | |
| DOCUMENT NOT CONSIDERED FINAL UNLESS ALL SIGNATURES COMPLETED | | | |

-L-

| | | | |
|---|--|---|---|
| Pls Sta 16+80.16 $\Delta = 2' 51" 53.2"$ $L_s = 200.00'$ $LT = 133.35'$ $ST = 66.68'$ | Pls Sta 24+44.47 $\Delta = 1' 35" 19.6" (LT)$ $D = 0' 34" 22.6"$ $L = 277.29'$ $T = 138.65'$ $R = 10,000.00'$ $e = NC$ | Pls Sta 26+49.78 $\Delta = 0' 34" 22.6"$ $L_s = 200.00'$ $LT = 133.33'$ $ST = 66.67'$ | Pls Sta 29+71.34 $\Delta = 1' 32" 43.3" (RT)$ $D = 3' 36" 53.6"$ $L = 374.71'$ $T = 188.23'$ $R = 1,585.00'$ |
|---|--|---|---|

-YI-

| |
|--|
| Pls Sta 11+40.76 $\Delta = 9' 57" 38.2" (RT)$ $D = 60' 18" 40.8"$ $L = 152.48'$ $T = 98.31'$ $R = 95.00'$ $e = 0.04 FT/FT$ $R.O. = 68'$ |
|--|



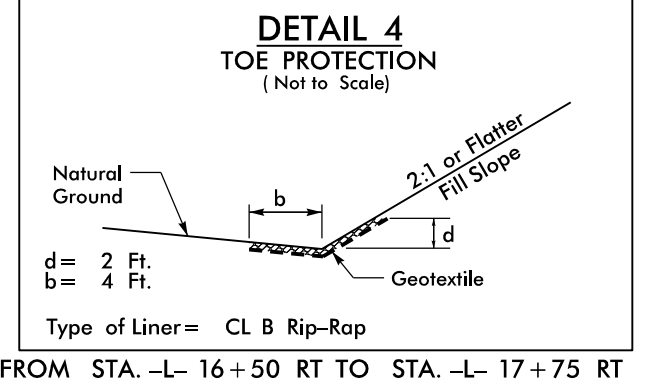
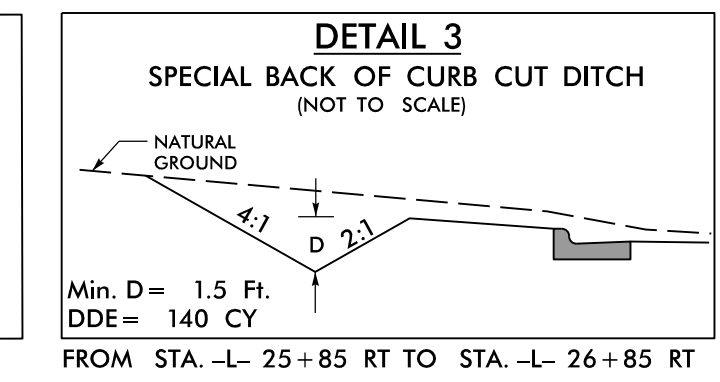
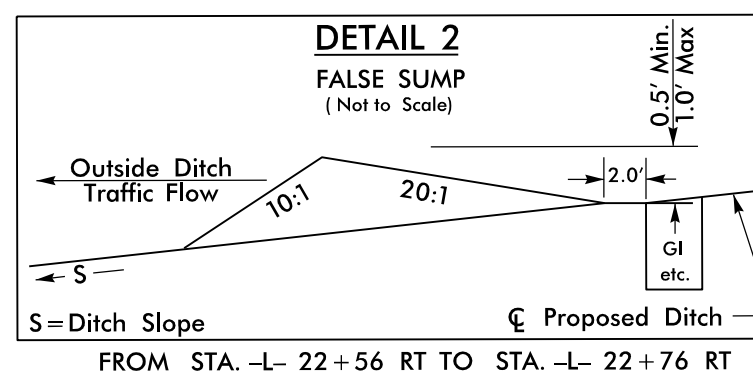
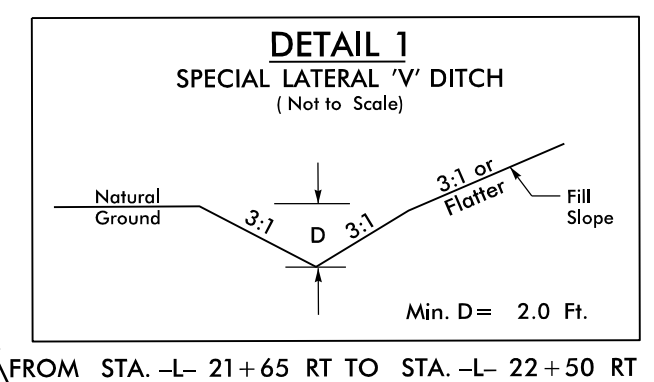
MATCHLINE -L- 17+00
SEE SHEET 4

REVISIONS

5/14/2019
 C:\AD\701_NCDOT_TIP\Roadway\Pr-j\B5717_1\Redy_psh05.dgn
 3/23/2020
 C:\AD\701_NCDOT_TIP\Roadway\Pr-j\B5717_1\Redy_psh05.dgn

NOTE:
SPECIAL DETAIL NEEDED FOR 0533.
2GI-A w/MIN. DEPTH OF 1.7'

NOTE:
ALTER STANDARD DETAIL 852.05
TO INCORPORATE STRUCTURES
0518 AND 0519



FOR TRANSPORTATION
MANAGEMENT PLAN
SEE SHEETS TMP-1
THROUGH TMP-9

FOR STRUCTURES SEE SHEETS
S1-01 THROUGH S2-38

FOR -L- RT- PROFILE, SEE SHEET NO. 6
FOR -L- LT- PROFILE, SEE SHEET NO. 6
FOR -L- PROFILE, SEE SHEET NO. 7
FOR -YI- PROFILE, SEE SHEET NO. 7