
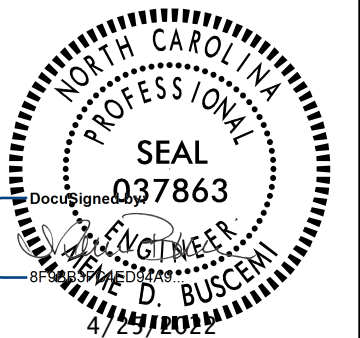
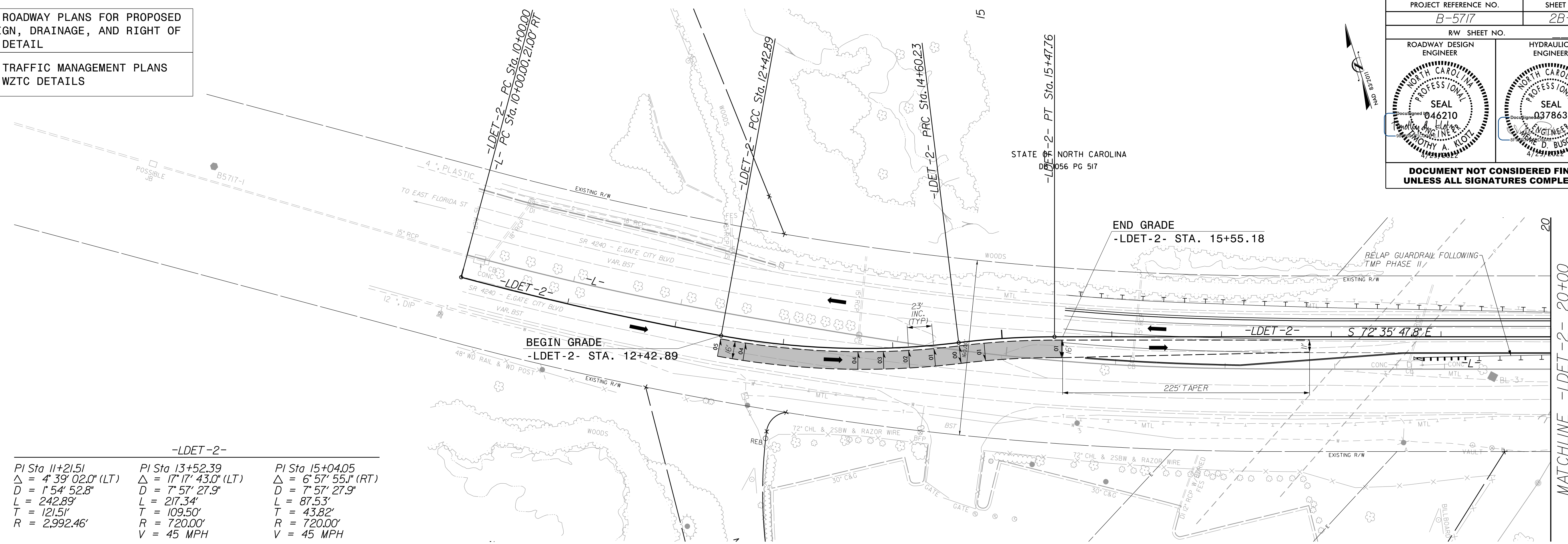


8/17/99

SEE ROADWAY PLANS FOR PROPOSED DESIGN, DRAINAGE, AND RIGHT OF WAY DETAIL  
SEE TRAFFIC MANAGEMENT PLANS FOR WZTC DETAILS

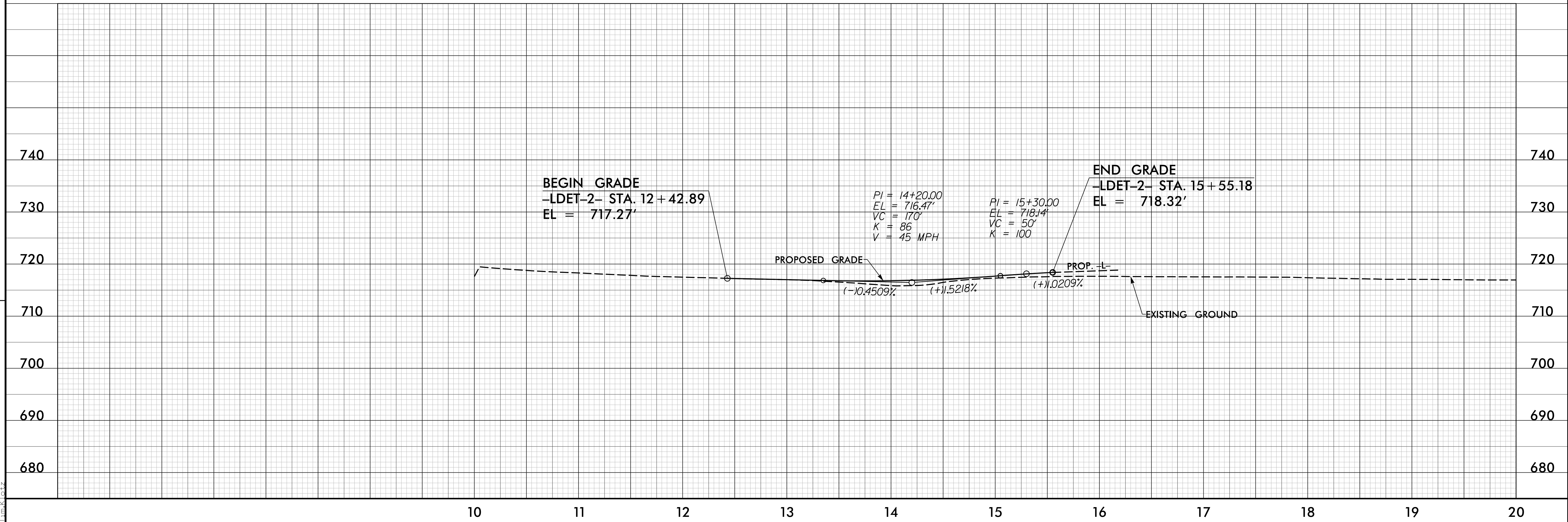
PROJECT REFERENCE NO. B-5717	SHEET NO. 2B-3
RW SHEET NO.	
ROADWAY DESIGN ENGINEER	HYDRAULICS ENGINEER
	
DOCUMENT NOT CONSIDERED FINAL UNLESS ALL SIGNATURES COMPLETED	



-LDET-2-		
PI Sta 11+21.51	PI Sta 13+52.39	PI Sta 15+04.05
$\Delta = 4^{\circ} 39' 02.0''$ (LT)	$\Delta = 17^{\circ} 17' 43.0''$ (LT)	$\Delta = 6^{\circ} 57' 55.1''$ (RT)
D = 154' 52.8"	D = 757' 27.9"	D = 757' 27.9"
L = 242.89'	L = 217.34'	L = 87.53'
T = 121.51'	T = 109.50'	T = 43.82'
R = 2,992.46'	R = 720.00'	R = 720.00'
	V = 45 MPH	V = 45 MPH

**-LDET-2-**

REVISIONS



3/17/2022  
 P:\311\2022\Projects\Bentley\AECOM\_DS21\_NA\_2020\Documents\60592827-NC001\_SMLI\_B-5717\900-CAD\_GIS\910\_CAD\70\_NC001\_IP\Roadway\Proc\B5717\_Rdly\_esh02B-3.dgn  
 P:\311\2022\Projects\Bentley\AECOM\_DS21\_NA\_2020\Documents\60592827-NC001\_SMLI\_B-5717\900-CAD\_GIS\910\_CAD\70\_NC001\_IP\Roadway\Proc\B5717\_Rdly\_esh02B-3.dgn