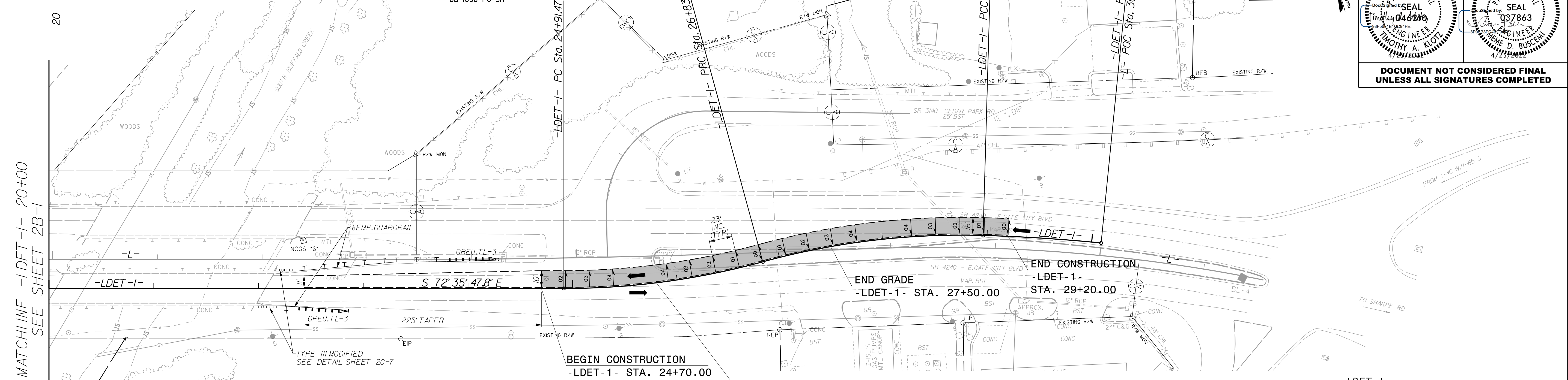


8/17/99

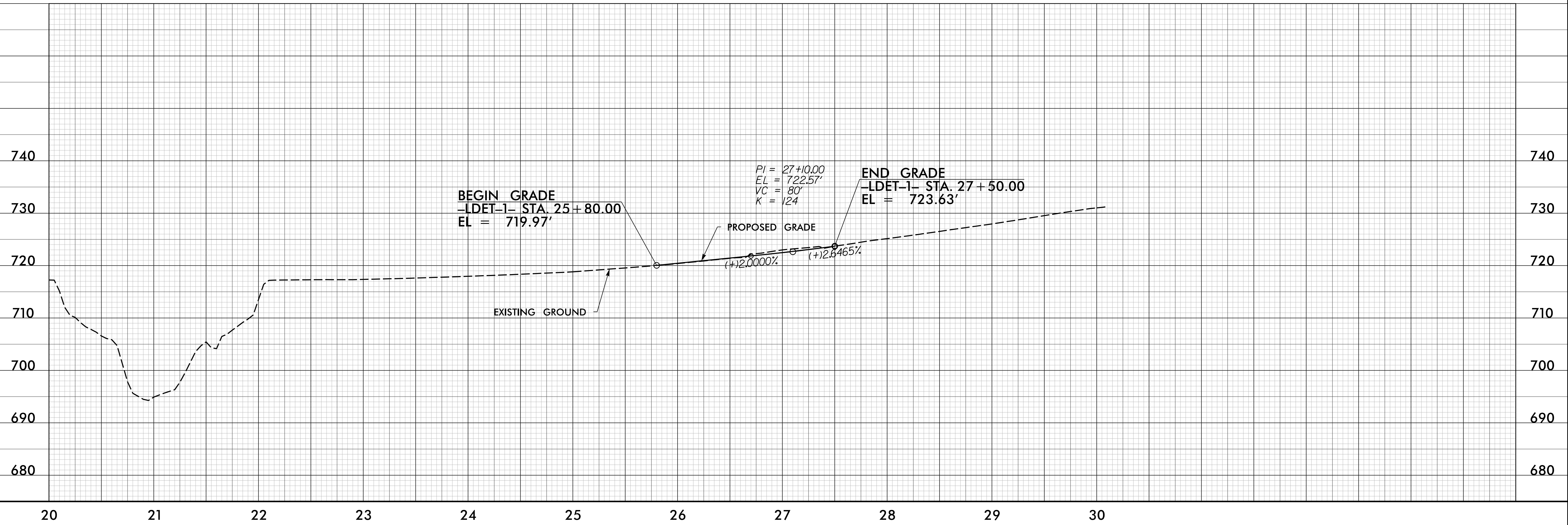
SEE ROADWAY PLANS FOR PROPOSED DESIGN, DRAINAGE, AND RIGHT OF WAY DETAIL  
SEE TRAFFIC MANAGEMENT PLANS FOR WZTC DETAILS

PROJECT REFERENCE NO. B-5717	SHEET NO. 2B-2
ROADWAY DESIGN ENGINEER NORTH CAROLINA PROFESSIONAL SEAL 046240 TIMOTHY A. KLOT	HYDRAULICS ENGINEER NORTH CAROLINA PROFESSIONAL SEAL 037863 WENDE D. BUSCH
DOCUMENT NOT CONSIDERED FINAL UNLESS ALL SIGNATURES COMPLETED	



-LDET-1-		-LDET-1-		-LDET-1-	
PI Sta 25+88.09	$\Delta = 15' 17" 13.9" (LT)$	PI Sta 27+90.63	$\Delta = 16' 54' 55.7" (RT)$	PI Sta 29+52.61	$\Delta = 4' 03' 01" (RT)$
D = 7' 57' 27.9"	L = 192.10'	D = 7' 57' 27.9"	L = 212.57'	D = 3' 35' 15.8"	L = 112.89'
T = 96.63'	R = 720.00'	T = 107.06'	R = 720.00'	T = 56.47'	R = 1,597.00'
V = 45 MPH		V = 45 MPH			

**-LDET-1-**



REVISIONS

3/17/2022  
D:\s\sec\com-ne\pwb\ent\leu\com\AECOM\_DS21\_NA\_2020\Documents\60592827-NCDDI\_SMLI\_B-5717\900-CAD\_GIS\910\_CAD\70\_NCDDI\_IP\Roadway\Proc\AB5717\_Rdy\_esh02B-2.dgn