

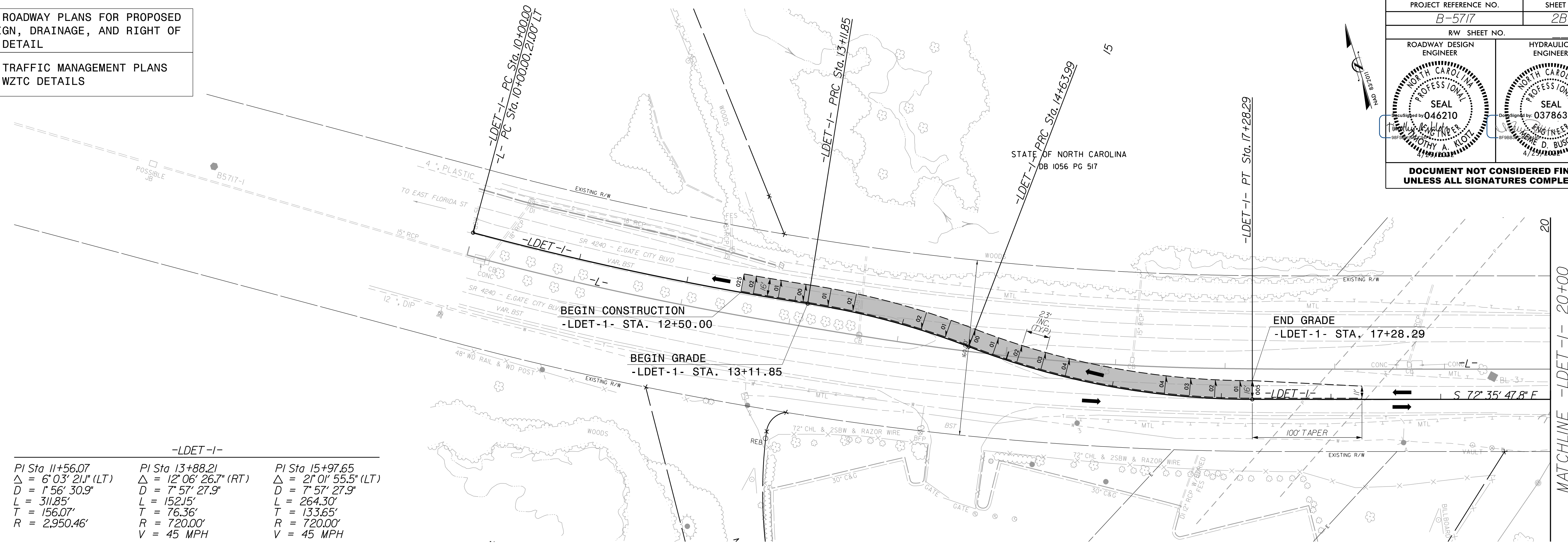


8/17/19

SEE ROADWAY PLANS FOR PROPOSED DESIGN, DRAINAGE, AND RIGHT OF WAY DETAIL

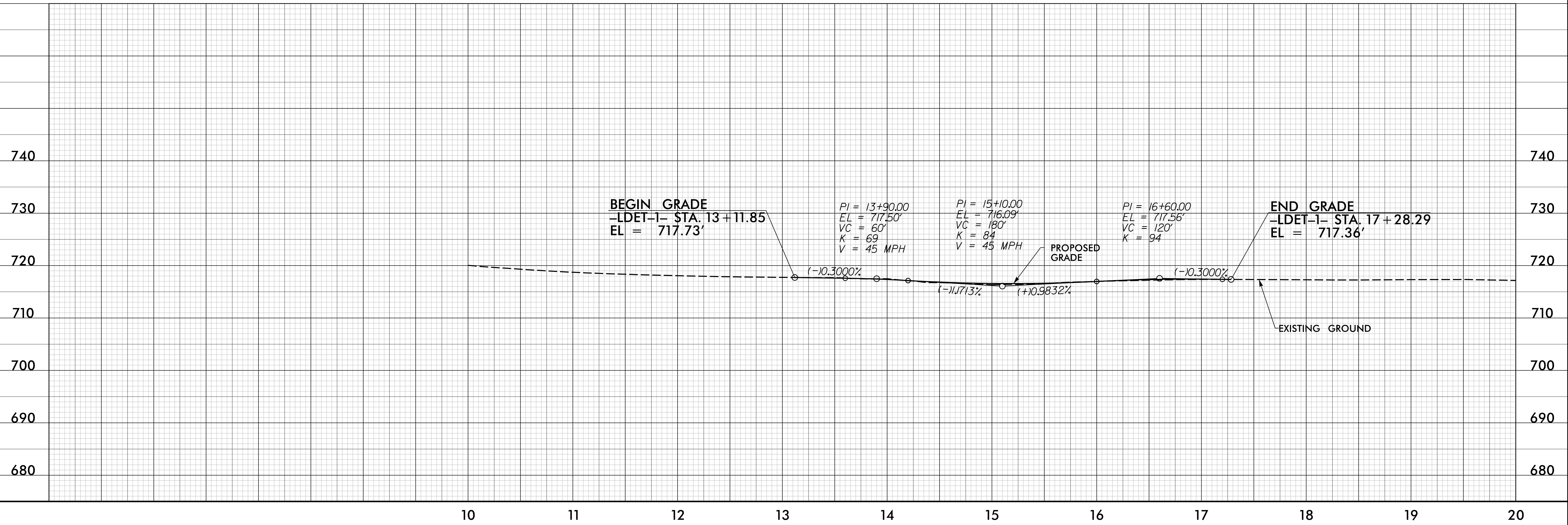
SEE TRAFFIC MANAGEMENT PLANS FOR WZTC DETAILS

PROJECT REFERENCE NO. B-5717	SHEET NO. 2B-1
RW SHEET NO.	
ROADWAY DESIGN ENGINEER	HYDRAULICS ENGINEER
	
DOCUMENT NOT CONSIDERED FINAL UNLESS ALL SIGNATURES COMPLETED	



-LDET-1-		
PI Sta 11+56.07 Δ = 6° 03' 21.1" (LT) D = 1° 56' 30.9" L = 311.85' T = 156.07' R = 2,950.46'	PI Sta 13+88.21 Δ = 12° 06' 26.7" (RT) D = 7° 57' 27.9" L = 152.15' T = 76.36' R = 720.00' V = 45 MPH	PI Sta 15+97.65 Δ = 2° 01' 55.5" (LT) D = 7° 57' 27.9" L = 264.30' T = 133.65' R = 720.00' V = 45 MPH

-LDET-1-



REVISIONS

3/14/2022
D:\Secom\ne\paw.bentley.com\AECOM_DS21_NA_2020\Documents\60592827-NCDDI_SMLI_B-5717\900-CAD_GIS\910_CAD\70_NCDDI_IP\Roadway\Proc\B5717_Rd\paw02B-1.dgn

MATCHLINE -LDET-1- 20+00
SEE SHEET 2B-2