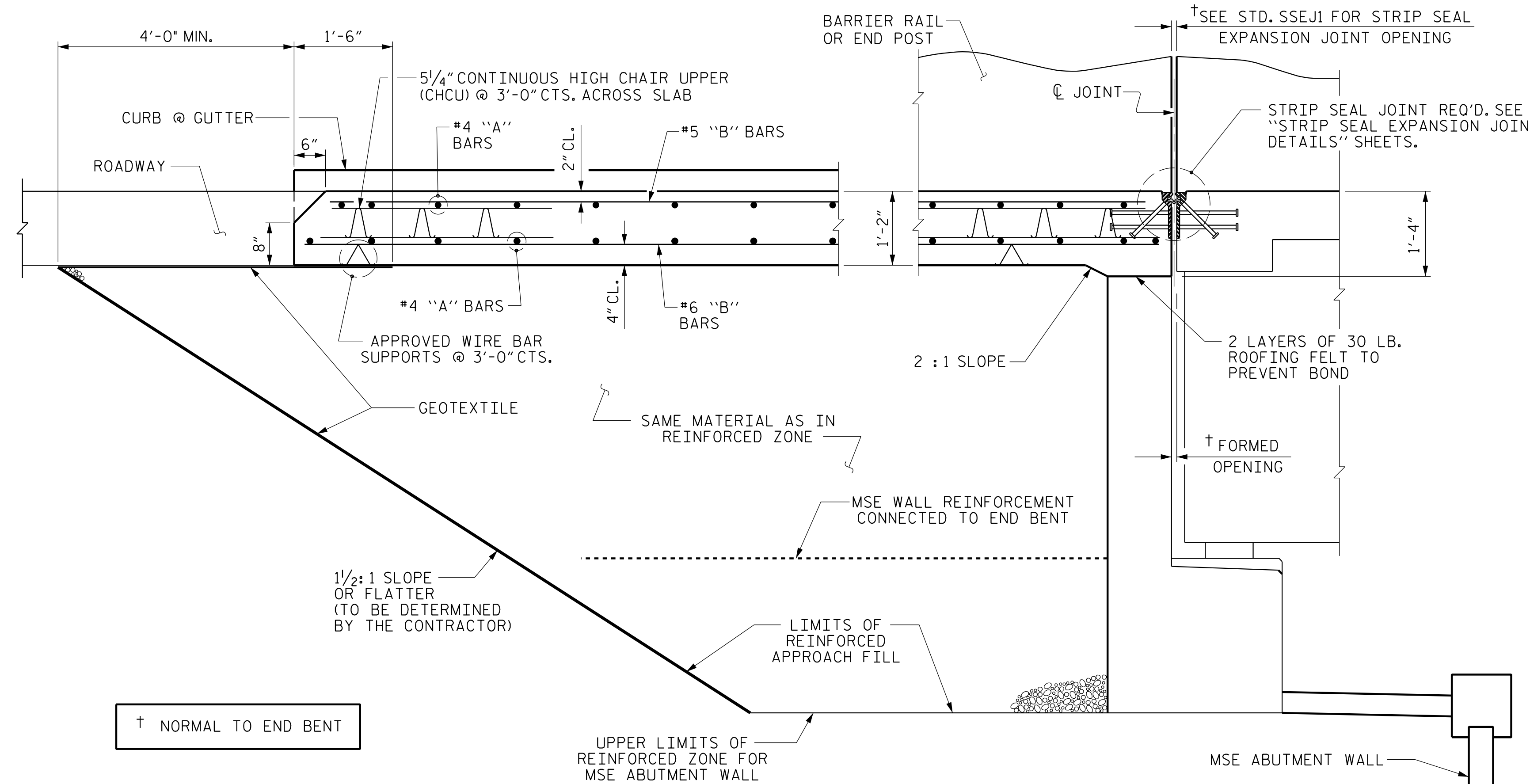


PLAN @ END BENT 1
PLAN @ END BENT 2
DIMENSIONS SHOWN ARE TYPICAL FOR BOTH APPROACH SLABS



SECTION THRU SLAB
(TYPE III - REINFORCED APPROACH FILL)

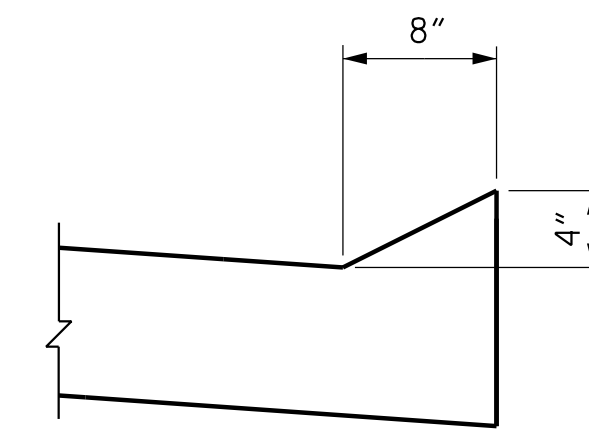
NOTES

FOR BRIDGE APPROACH FILL INCLUDING GEOTEXTILE, MSE WALL REINFORCEMENT AND BACKFILL MATERIAL SEE ROADWAY PLANS.
 GEOTEXTILE SHALL BE TYPE 1 IN ACCORDANCE WITH THE STANDARD SPECIFICATIONS SECTION 1056.
 BACKFILL MATERIAL SHALL BE THE SAME MATERIAL USED IN THE MSE REINFORCED ZONE.
 APPROACH SLAB SHALL NOT BE CONSTRUCTED PRIOR TO COMPLETION OF THE BRIDGE DECK.
 AREA BETWEEN THE WINGWALL AND APPROACH SLAB SHALL BE GRADED TO DRAIN THE WATER AWAY FROM THE FILL FACE OF THE BRIDGE AND SHALL BE PAVED. SEE ROADWAY PLANS.
 FOR STRIP SEAL EXPANSION JOINTS, SEE SPECIAL PROVISIONS.

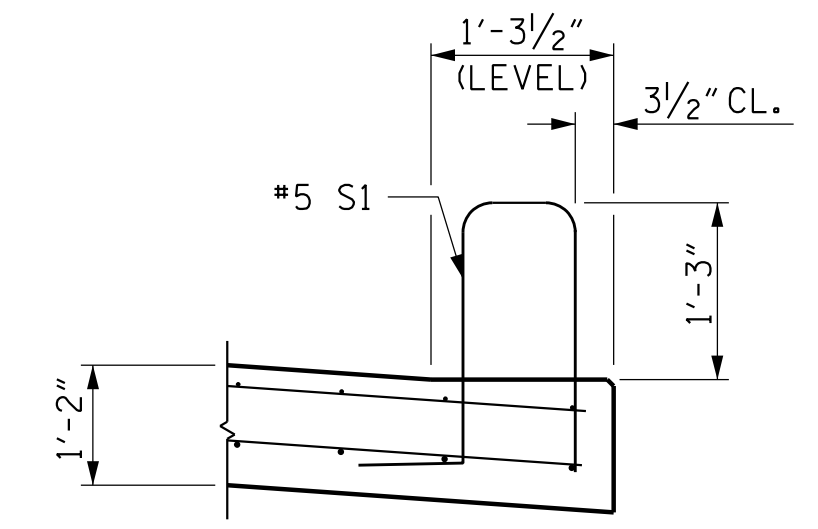
BILL OF MATERIAL					
FOR ONE APPROACH SLAB (2 REQ'D)					
BAR	NO.	SIZE	TYPE	LENGTH	WEIGHT
*A1	125	#4	STR	29'-1"	2428
A2	130	#4	STR	28'-10"	2504
*B1	224	#5	STR	24'-1"	5627
B2	224	#6	STR	24'-8"	8299
*B3	1	#5	STR	3'-4"	3
B4	1	#6	STR	3'-4"	5
*B5	1	#5	STR	4'-1"	4
B6	1	#6	STR	4'-1"	6
REINFORCING STEEL **					LBS. 10814
*EPOXY COATED REINFORCING STEEL **					LBS. 8062
CLASS AA CONCRETE **					C. Y. 122.1

** QUANTITIES FOR MONOLITHIC ISLAND AND BARRIER RAIL ARE NOT INCLUDED. SEE SHEET 2 OF 3 AND 3 OF 3.

SPLICE LENGTHS		
BAR SIZE	EPOXY COATED	UNCOATED
#4	1'-11"	1'-7"
#5	2'-5"	2'-0"
#6	3'-7"	2'-5"



SECTION N-N



SECTION K-K

PROJECT NO. U-2519BB
 CUMBERLAND COUNTY
 STATION: 80+65.32 -Y17- POT

SHEET 1 OF 3

STATE OF NORTH CAROLINA
 DEPARTMENT OF TRANSPORTATION
 RALEIGH
 STANDARD
 BRIDGE APPROACH SLAB
 FOR FLEXIBLE PAVEMENT

REVISIONS						SHEET NO.
NO.	BY:	DATE:	NO.	BY:	DATE:	S-38
1			3			TOTAL SHEETS
2			4			41

PLANS PREPARED BY:
NV5
 NV5 ENGINEERS & CONSULTANTS, INC.
 3300 REGENCY PARKWAY, SUITE 100
 CARY, NC 27518
 P: 919.851.1912 www.NV5.com
 NC License # F-1333
 Formerly CALIX Engineers & Consultants

THIS STANDARD DRAWING REVIEWED & ADOPTED FOR USE AT THE REFERENCED LOCATION BY THE UNDERSIGNED:

DOCUMENT NOT CONSIDERED FINAL
 UNLESS ALL SIGNATURES COMPLETED

3/27/2022 5:59:59 PM G:\Projects\2024\2040452\28\CLIENT\Structures\U2519BB\SWI_ASI_250452.dgn