

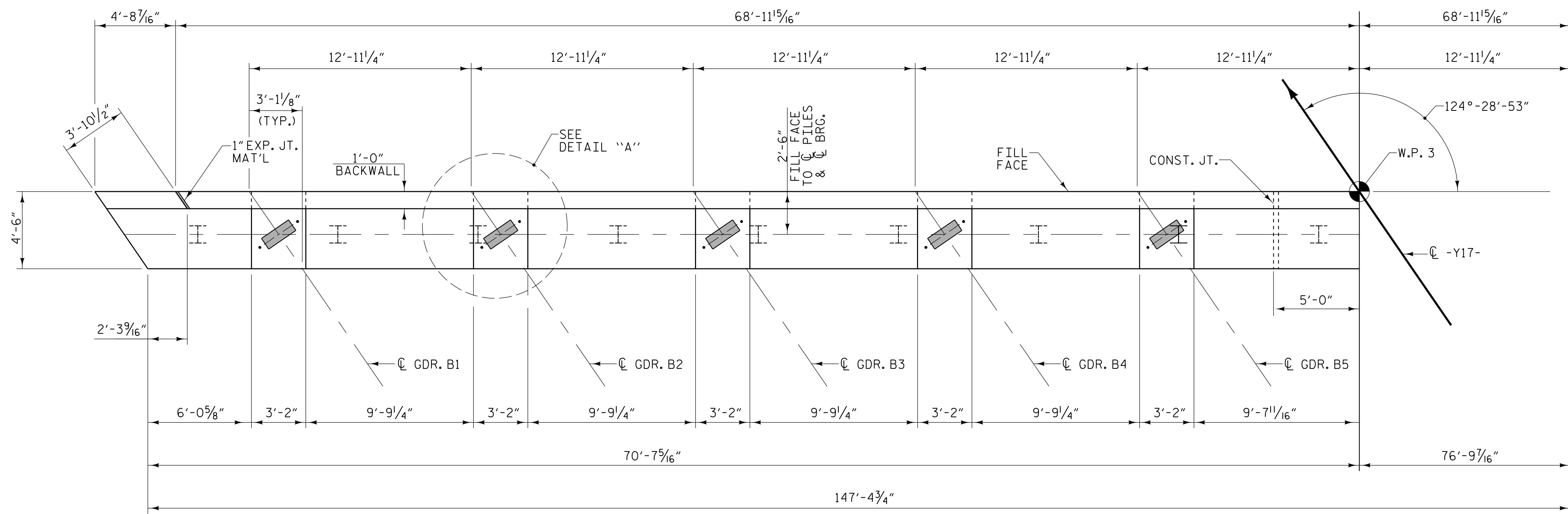
### NOTES

STIRRUPS AND "U" BARS IN THE CAP MAY BE SHIFTED AS NECESSARY TO CLEAR ANCHOR BOLTS.

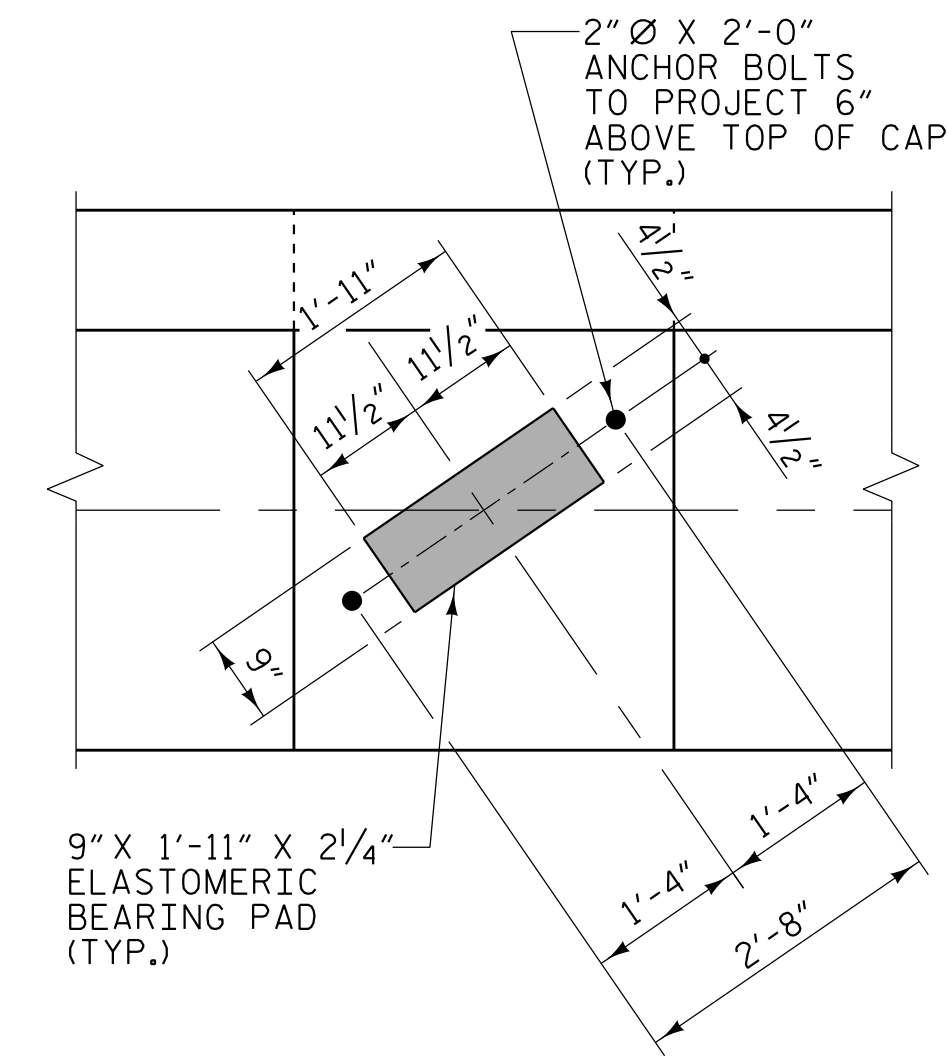
BACKWALL SHALL BE PLACED BEFORE APPLYING THE EPOXY PROTECTIVE COATING.

THE TOP SURFACE AREA OF THE END BENT CAP SHALL BE CURED IN ACCORDANCE WITH THE STANDARD SPECIFICATIONS EXCEPT THAT THE MEMBRANE CURING COMPOUND METHOD SHALL NOT BE USED.

THE TOP SURFACE OF THE END BENT CAP EXCEPT THE BRIDGE SEAT BUILDUPS SHALL BE SLOPED TRANSVERSELY FROM THE FILL FACE TO THE BACK FACE AT THE RATE OF 2%.

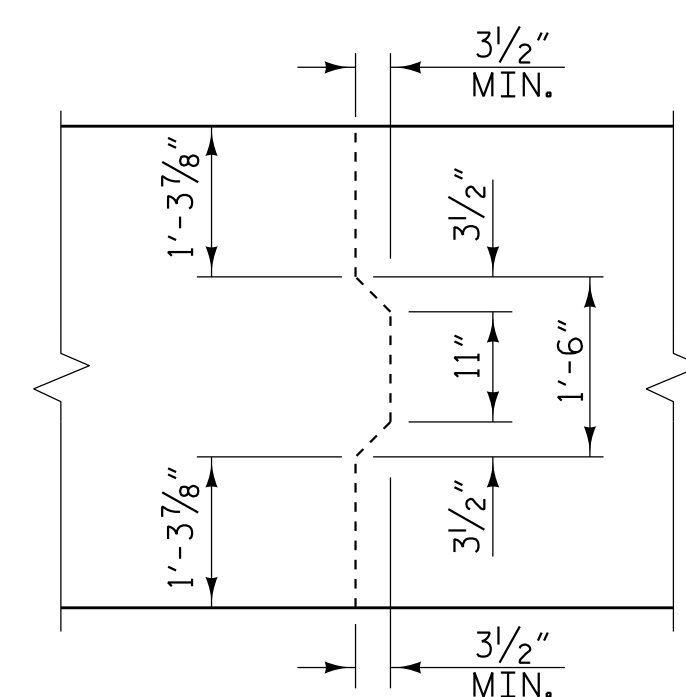


### PLAN

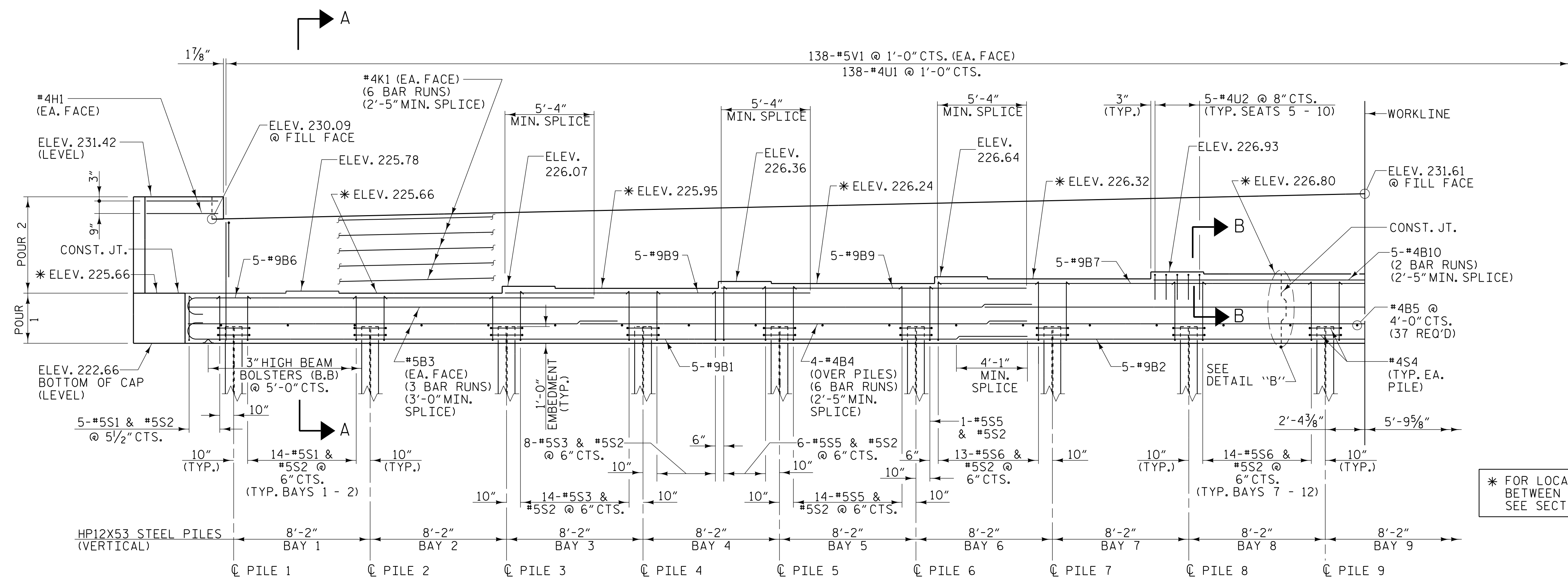


### DETAIL "A"

(TYP. EACH GIRDER)



### DETAIL "B"



### ELEVATION

\* FOR LOCATION OF ELEVATIONS BETWEEN BRIDGE SEAT BUILD-UPS, SEE SECTION A-A SHEET 3 OF 3.

PROJECT NO. U-2519BB  
 CUMBERLAND COUNTY  
 STATION: 80+65.32 -Y17- POT

SHEET 1 OF 3

STATE OF NORTH CAROLINA  
 DEPARTMENT OF TRANSPORTATION  
 RALEIGH

**SUBSTRUCTURE  
 END BENT 2**

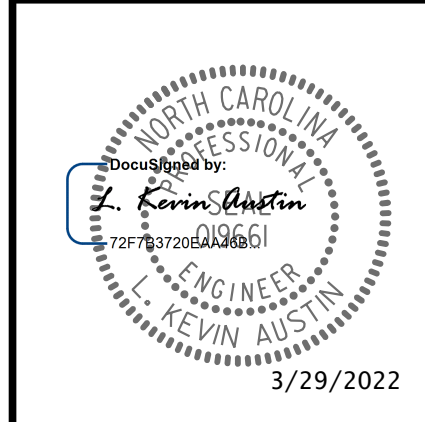
REVISIONS						SHEET NO.
NO.	BY:	DATE:	NO.	BY:	DATE:	S-34
1			3			TOTAL SHEETS
2			4			41

PLANS PREPARED BY:

**NV5**

NV5 ENGINEERS & CONSULTANTS, INC.  
 3300 REGENCY PARKWAY, SUITE 100  
 CARY, NC 27518  
 P: 919.851.1912 www.NV5.com

NC License # F-1333  
 Formerly CAVI Engineers & Consultants



**DOCUMENT NOT CONSIDERED FINAL  
 UNLESS ALL SIGNATURES COMPLETED**

DRAWN BY : M. D. METZGER DATE : 2/22  
 CHECKED BY : L. K. AUSTIN DATE : 2/22  
 DESIGN ENGINEER OF RECORD: L. K. AUSTIN DATE : 2/22

3/27/2022 5:28:48 PM G:\Projects\2024\204204052\28\CLIENT\Structures\U2519BB\_SMU.E4\_250452.dgn