
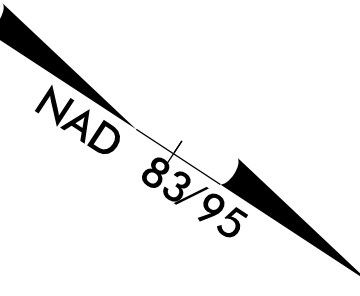


6/2/09

PROJECT REFERENCE NO.	SHEET NO.
U-2519BB	RW17
Location and Surveys	
DEWBERRY ENGINEERS INC.	
PROJECT SURVEYOR	
	
DOCUMENT NOT CONSIDERED FINAL UNLESS ALL SIGNATURES COMPLETED	



-SRI-
 PI Sta 14+45.78
 $\Delta = 40^\circ 34' 21.1''$ (LT)
 $D = 4' 45'' 03.2''$
 $L = 854.00'$
 $T = 445.78'$
 $R = 1,206.00'$
 $Vd = 40$ MPH
 SUPER = 4%

TRUDY MATTHEWS
 DB 5058 PG 558
 PB 98 PG 138

DOUGLAS KRIEGER
 DB 3623 PG 571

DOUGLAS KRIEGER
 DB 3945 PG 884

SUGIN MENDENHALL
 DB 2800 PG 713

(38)
 JANE BUIE
 DB 191 PG 202

(39)
 FRANCES MOYE
 DB 634 PG 754

(1)
 NCDOT
 formerly GERTRUDE CODWIN
 DB 9667 PG 262

(2)
 MARVIN LINDSAY
 DB 4049 PG 189


(7)
 GF MOODY PROPERTIES
 DB 9300 PG 787

(3)
 ALEX THOMPSON
 DB 3735 PG 381

(39)
 FRANCES MOYE
 DB 634 PG 754

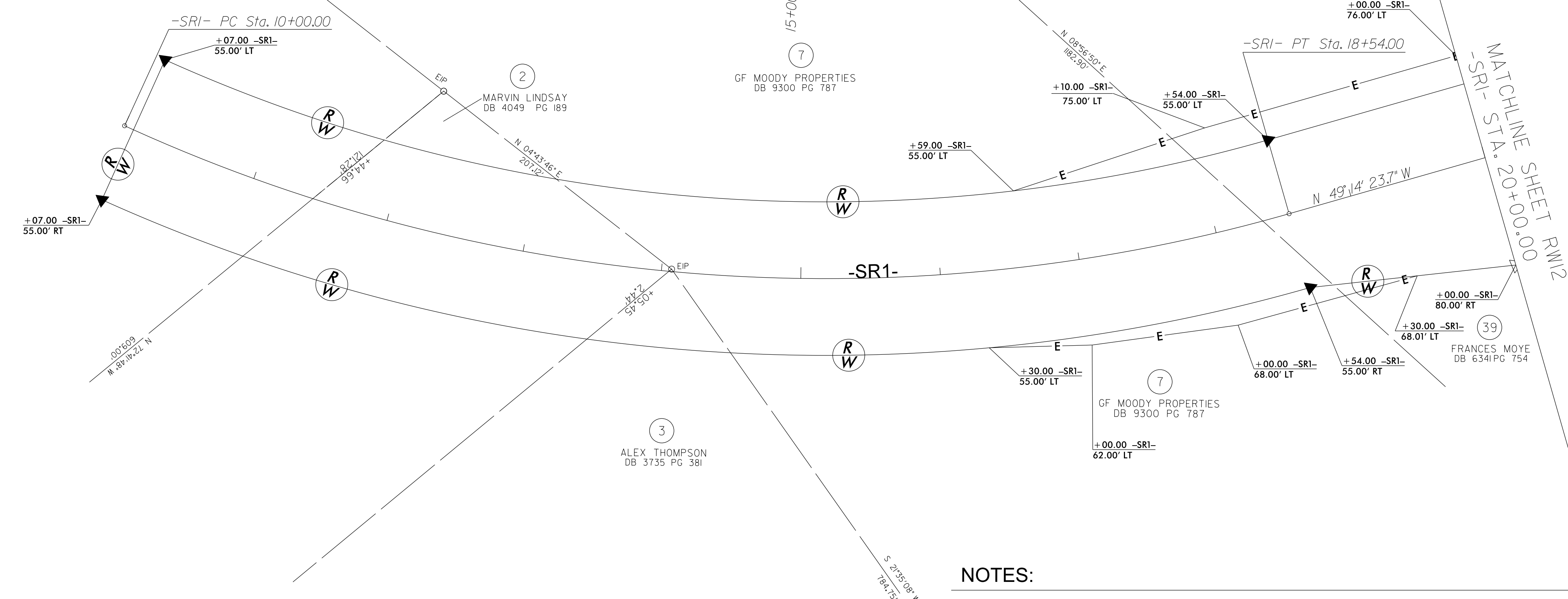
I, Adam Hales, certify that the right of way and permanent easement monumentation for this project shown herein was completed under my direct and responsible charge from an actual survey made under my supervision; that all horizontal closures had a minimum ratio of precision of 1:10,000 (Class A). Field work was performed from February 1 to March 1, 2022, and all coordinates are based on NAD83/95; That this survey was performed to meet the requirements of 21NCAC 56.1600 as applicable.

This 1st day of March, 2022.


 Adam Hales
 Professional Land Surveyor L-4980

REVISIONS

P:\MAY_2022_15659_Survey\U2519bb_1s_rw17.dgn
 6/2/2022 10:48:57 AM AT PF30BEKY
 ahales



NOTES:

1. IF FURTHER INFORMATION REGARDING PROJECT CONTROL IS NEEDED PLEASE CONTACT THE LOCATION AND SURVEYS UNIT.
2. PROJECT CONTROL WAS ESTABLISHED USING GNSS, THE GLOBAL NAVIGATION SATELLITE SYSTEM.
3. RIGHT OF WAY MONUMENTATION ESTABLISHED FEBRUARY 1 TO MARCH 1, 2022.