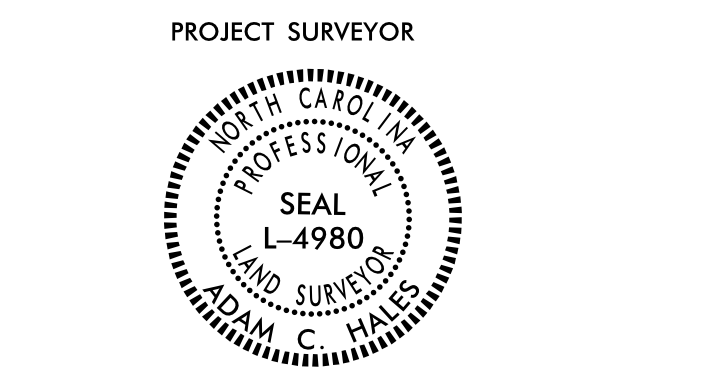


6/2/19

PROJECT REFERENCE NO.	SHEET NO.
U-2519BB	RW13

Location and Surveys

DEWBERRY ENGINEERS INC.



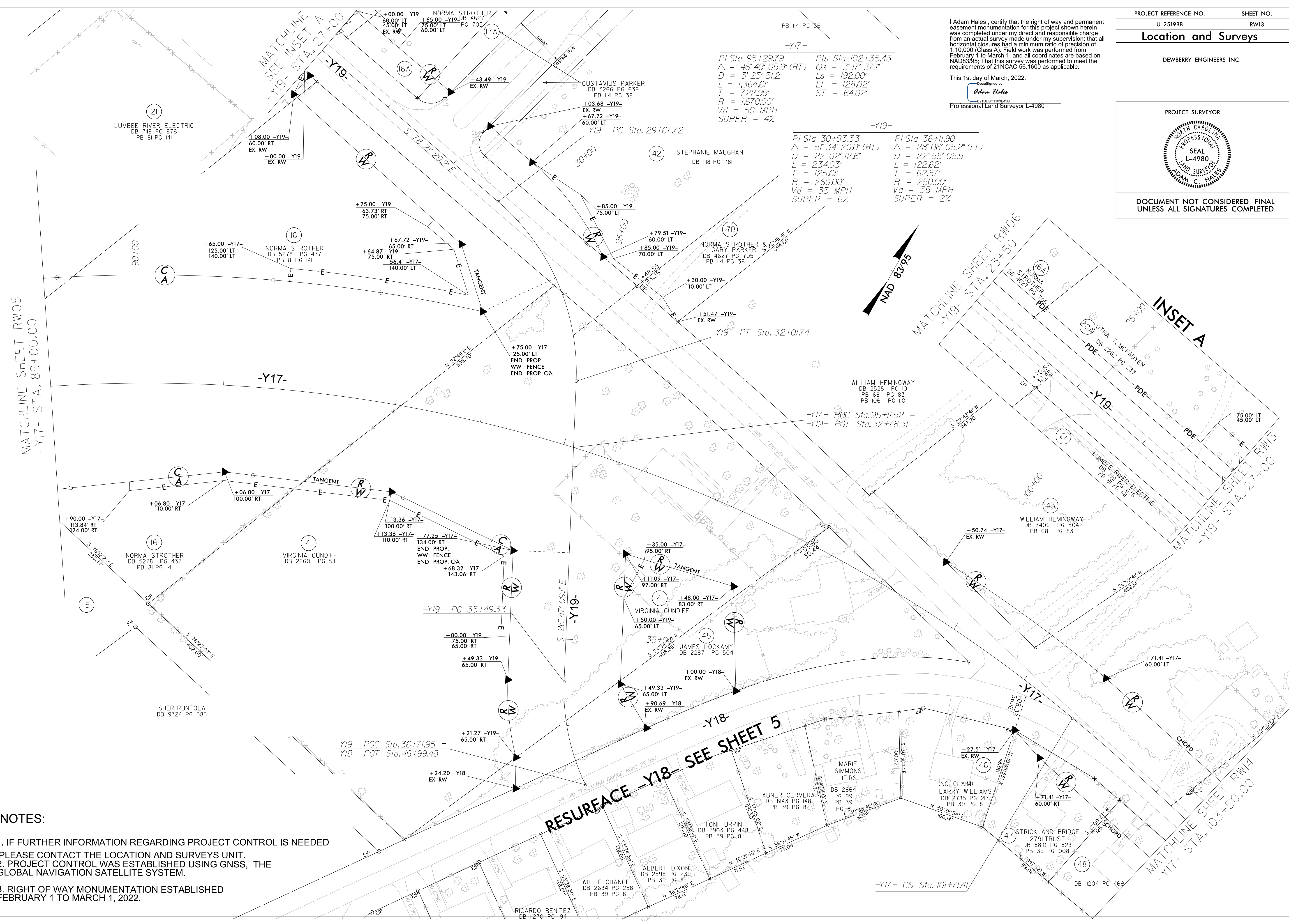
DOCUMENT NOT CONSIDERED FINAL UNLESS ALL SIGNATURES COMPLETED

I Adam Hales, certify that the right of way and permanent easement monumentation for this project shown herein was completed under my direct and responsible charge from an actual survey made under my supervision; that all horizontal closures had a minimum ratio of precision of 1:10,000 (Class A). Field work was performed from February 1 to March 1, and all coordinates are based on NAD83/95; That this survey was performed to meet the requirements of 21NCAC 56.1600 as applicable.

This 1st day of March, 2022.

Adam Hales
Professional Land Surveyor L-4980

REVISIONS

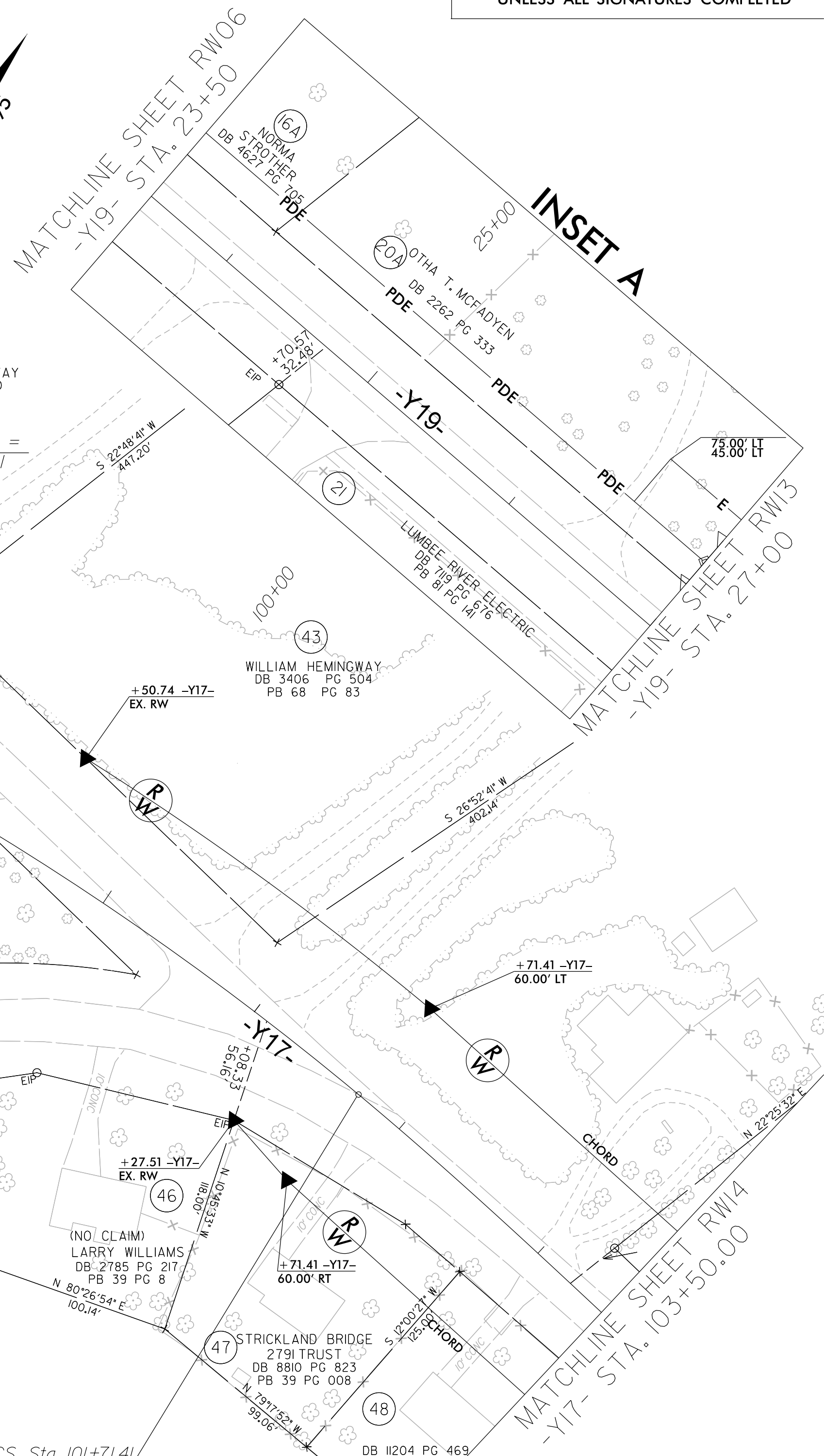


NOTES:

- IF FURTHER INFORMATION REGARDING PROJECT CONTROL IS NEEDED PLEASE CONTACT THE LOCATION AND SURVEYS UNIT.
- PROJECT CONTROL WAS ESTABLISHED USING GNSS, THE GLOBAL NAVIGATION SATELLITE SYSTEM.
- RIGHT OF WAY MONUMENTATION ESTABLISHED FEBRUARY 1 TO MARCH 1, 2022.

P:\1519\2022\1519_Survey\U2519bb_1s_rw13.dgn
 6/2/19 14:59
 AHales

RESURFACE -Y18- SEE SHEET 5



MATCHLINE SHEET RW05
-Y17- STA. 89+00.00

MATCHLINE SHEET RW06
-Y19- STA. 23+50

INSET A

MATCHLINE SHEET RW14
-Y17- STA. 103+50.00

-Y17-

PI Sta 95+29.79
 $\Delta = 46^\circ 49' 05.9''$ (RT)
 $D = 3^\circ 25' 51.2''$
 $L = 1,364.6'$
 $T = 722.99'$
 $R = 1,670.00'$
 $Vd = 50$ MPH
 $SUPER = 4\%$

PIs Sta 102+35.43
 $\Theta_s = 3^\circ 17' 37.1''$
 $L_s = 192.00'$
 $LT = 128.02'$
 $ST = 64.02'$

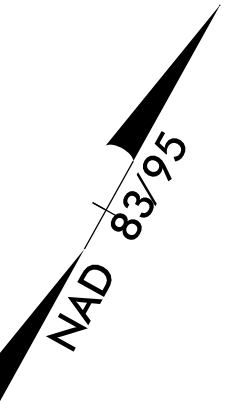
-Y19-

PI Sta 30+93.33
 $\Delta = 51^\circ 34' 20.0''$ (RT)
 $D = 22^\circ 02' 12.6''$
 $L = 234.03'$
 $T = 125.61'$
 $R = 260.00'$
 $Vd = 35$ MPH
 $SUPER = 6\%$

PIs Sta 36+11.90
 $\Delta = 28^\circ 06' 05.2''$ (LT)
 $D = 22^\circ 55' 05.9''$
 $L = 122.62'$
 $T = 62.57'$
 $R = 250.00'$
 $Vd = 35$ MPH
 $SUPER = 2\%$

-Y19- POC Sta. 36+71.95 =
-Y18- POT Sta. 46+99.48

-Y17- POC Sta. 95+11.52 =
-Y19- POT Sta. 32+78.31



RICARDO BENITEZ
DB 11270 PG 194