

PROJECT REFERENCE NO.	SHEET NO.
U-2519BB	RW09
Location and Surveys	
DEWBERRY ENGINEERS INC.	
PROJECT SURVEYOR	
DOCUMENT NOT CONSIDERED FINAL UNLESS ALL SIGNATURES COMPLETED	

-Y17-

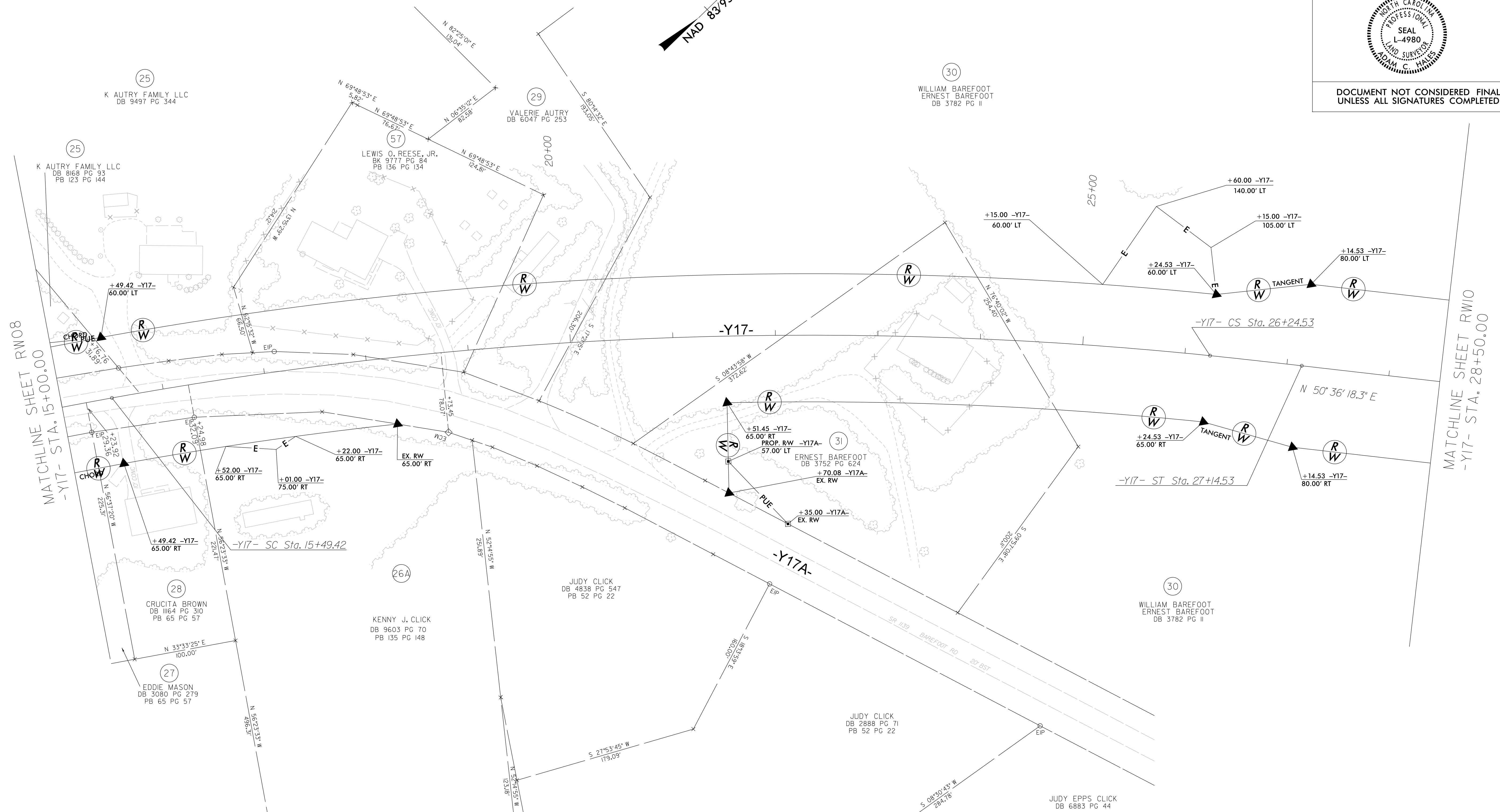
Pls Sta 15+19.42	PI Sta 20+90.55	Pls Sta 26+54.53
$\Theta_s = 0^\circ 40' 29.8''$	$\Delta = 16^\circ 07' 31.8''$ (RT)	$\Theta_s = 0^\circ 40' 29.8''$
$L_s = 90.00'$	$D = 1^\circ 29' 59.6''$	$L_s = 90.00'$
$LT = 60.00'$	$L = 1,075.11'$	$LT = 60.00'$
$ST = 30.00'$	$T = 541.13'$	$ST = 30.00'$
	$R = 3,820.00'$	
	$Vd = 50$ MPH	
	$SUPER = 3\%$	

I Adam Hales, certify that the right of way and permanent easement monumentation for this project shown herein was completed under my direct and responsible charge from an actual survey made under my supervision; that all horizontal closures had a minimum ratio of precision of 1:10,000 (Class A). Field work was performed from February 1 to March 1, and all coordinates are based on NAD83/95; That this survey was performed to meet the requirements of 21NCAC 56.1600 as applicable.

This 10th day of March, 2022.

DocuSigned by:
Adam Hales
Professional Land Surveyor L-4980

REVISIONS



- NOTES:**
1. IF FURTHER INFORMATION REGARDING PROJECT CONTROL IS NEEDED PLEASE CONTACT THE LOCATION AND SURVEYS UNIT.
 2. PROJECT CONTROL WAS ESTABLISHED USING GNSS, THE GLOBAL NAVIGATION SATELLITE SYSTEM.
 3. RIGHT OF WAY MONUMENTATION ESTABLISHED FEBRUARY 1 TO MARCH 1, 2022.

10 MAR 2022 14:40
 P:\20148671\CAD\Survey\U2519bb_1s_rw09.dgn
 ahales