

RIGHT OF WAY CONTROL SHEET

Location and Surveys

DEWBERRY ENGINEERS INC.

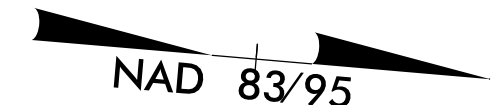
PROJECT SURVEYOR



DOCUMENT NOT CONSIDERED FINAL UNLESS ALL SIGNATURES COMPLETED

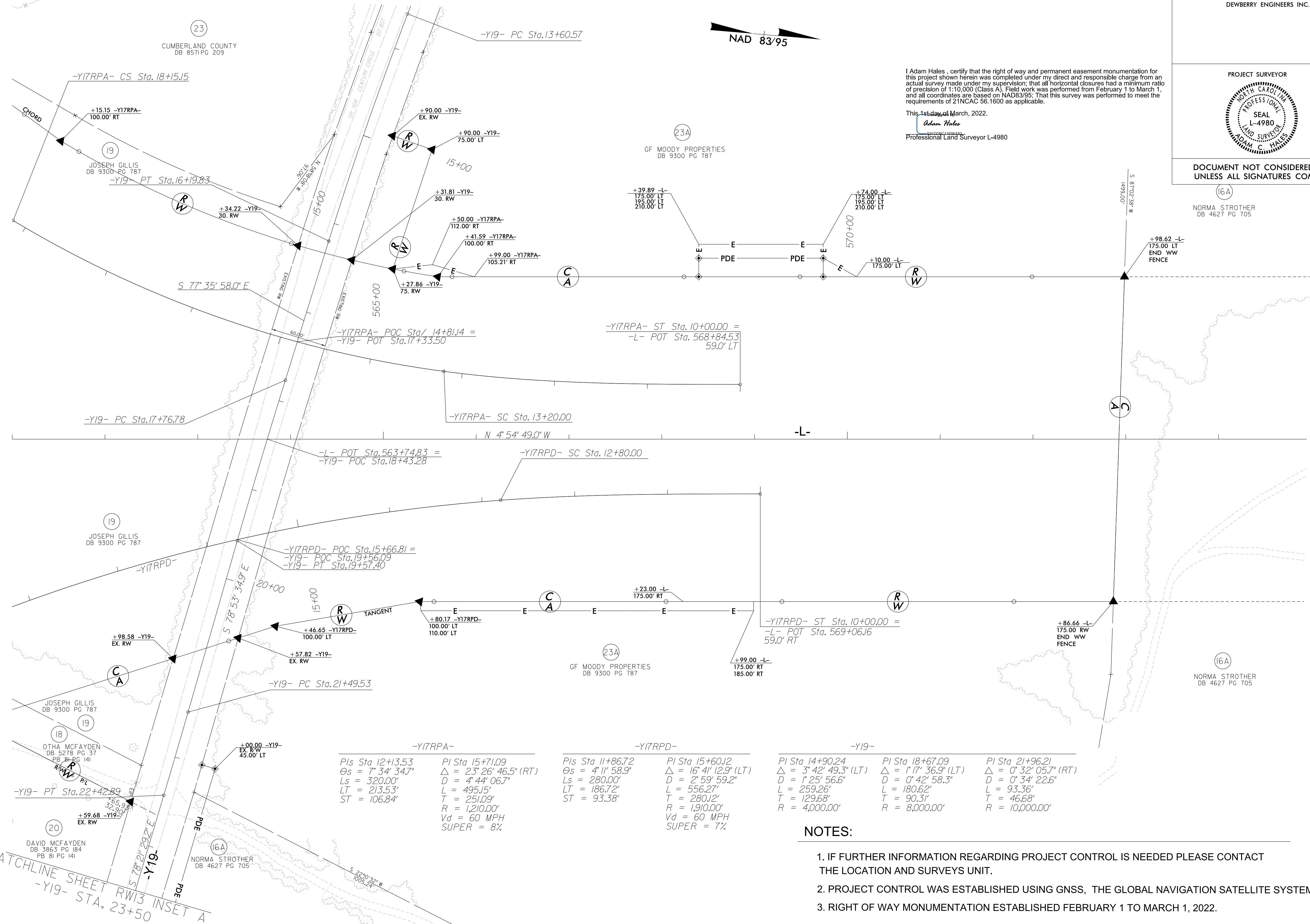
(16A)
NORMA STROTHER
DB 4627 PG 705

(16A)
NORMA STROTHER
DB 4627 PG 705



I Adam Hales, certify that the right of way and permanent easement monumentation for this project shown herein was completed under my direct and responsible charge from an actual survey made under my supervision, that all horizontal closures had a minimum ratio of precision of 1:10,000 (Class A). Field work was performed from February 1 to March 1, and all coordinates are based on NAD83/95; That this survey was performed to meet the requirements of 21NCAC 56.1600 as applicable.

This 1st day of March, 2022.
Adam Hales
Professional Land Surveyor L-4980



-Y17RPA-	-Y17RPD-	-Y19-
PI Sta 12+13.53	PI Sta 15+71.09	PI Sta 14+90.24
Os = 7° 34' 34.7"	Δ = 23° 26' 46.5" (RT)	Δ = 3° 42' 49.3" (LT)
Ls = 320.00'	D = 4° 44' 06.7"	Δ = 1° 17' 36.9" (LT)
LT = 213.53'	L = 495.15'	D = 0° 42' 58.3"
ST = 106.84'	T = 251.09'	L = 180.62'
	R = 1,210.00'	T = 90.31'
	Vd = 60 MPH	R = 8,000.00'
	SUPER = 8%	R = 10,000.00'

NOTES:

1. IF FURTHER INFORMATION REGARDING PROJECT CONTROL IS NEEDED PLEASE CONTACT THE LOCATION AND SURVEYS UNIT.
2. PROJECT CONTROL WAS ESTABLISHED USING GNSS, THE GLOBAL NAVIGATION SATELLITE SYSTEM.
3. RIGHT OF WAY MONUMENTATION ESTABLISHED FEBRUARY 1 TO MARCH 1, 2022.

REVISIONS

MATCHLINE SHEET RW07
-L- STA. 575+00.00

MATCHLINE SHEET RW13 INSET A
-Y19- STA. 23+50

P:\MIS_2022_15659_Survey\U2519BB_1s_rw06.dgn
 P:\MIS_2022_15659_Survey\U2519BB_AT_PF_30BKEY
 ahales