

6/2/19

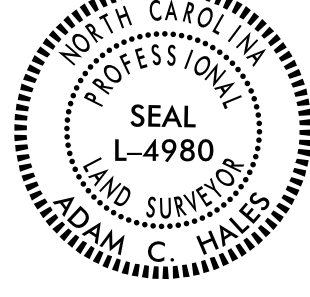
N 02°23'14" E  
34.47'

<i>Pls Sta 510+25.55</i>	<i>Pl Sta 523+30.69</i>	<i>Pls Sta 535+60.37</i>	<i>Pls Sta 11+82.77</i>	<i>Pl Sta 16+57.95</i>
$\Theta_s = 2'14'59.4"$	$\Delta = 35'01'11.1" (LT)$	$\Theta_s = 2'14'59.4"$	$\Theta_s = 2'26'11.1"$	$\Delta = 24'54'41.2" (LT)$
$L_s = 300.00'$	$D = 1'29'59.6"$	$L_s = 300.00'$	$\Theta_s = 5'59'34.0"$	$D = 3'44'41.4"$
$LT = 200.02'$	$L = 2,334.82'$	$LT = 200.02'$	$L_s = 320.00'$	$L = 665.22'$
$ST = 100.01'$	$T = 1,205.17'$	$ST = 100.01'$	$LT = 182.77'$	$T = 337.95'$
	$R = 3,820.00'$		$ST = 137.78'$	$R = 1,530.00'$
	$V_d = 70 \text{ MPH}$			$V_d = 60 \text{ MPH}$
	$SUPER = 6\%$			$SUPER = 8\%$

I Adam Hales, certify that the right of way and permanent easement monumentation for this project shown herein was completed under my direct and responsible charge from an actual survey made under my supervision; that all horizontal closures had a minimum ratio of precision of 1:10,000 (Class A). Field work was performed from February 1 to March 1, 2022, and all coordinates are based on NAD83/95. That this survey was performed to meet the requirements of 21NCAC 56.1600 as applicable.

This 1st day of March, 2022.

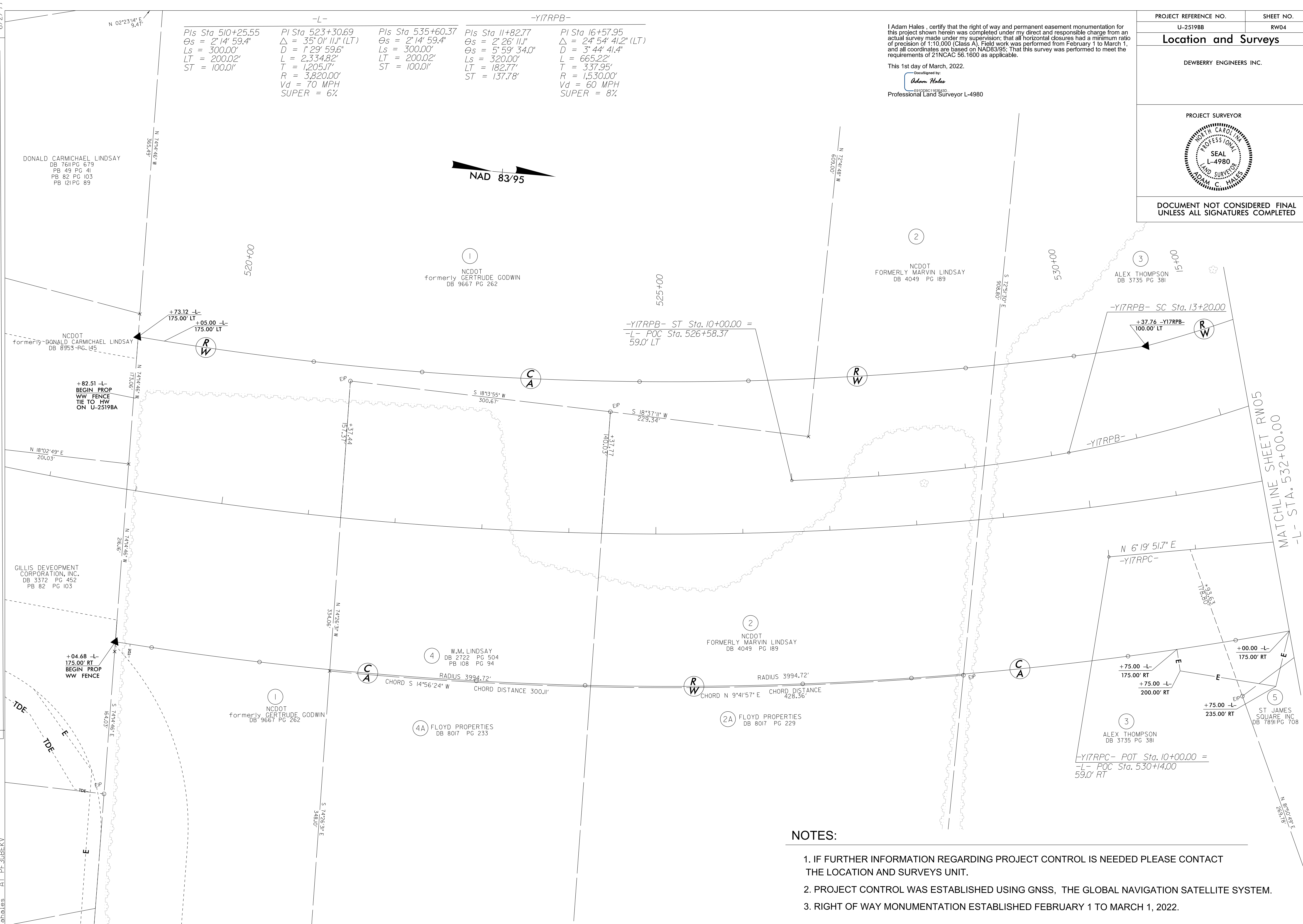
DocuSigned by:  
**Adam Hales**  
Professional Land Surveyor L-4980

PROJECT REFERENCE NO. U-2519BB	SHEET NO. RW04
<b>Location and Surveys</b>	
DEWBERRY ENGINEERS INC.	
PROJECT SURVEYOR	
	
DOCUMENT NOT CONSIDERED FINAL UNLESS ALL SIGNATURES COMPLETED	

REVISIONS

RIGHT OF WAY REVISION - 10/3/2019 - REMOVED TEMPORARY CONSTRUCTION EASEMENT FROM PARCELS 2A & 4A.

P:\M\B-2022-16\19\Survey\U-2519\bb\_1s\_rw04.dgn  
6/2/2022 10:48:57 AM  
A:\Survey\U-2519\bb\_1s\_rw04.dgn  
PF-30BEKY  
ahales



**NOTES:**

1. IF FURTHER INFORMATION REGARDING PROJECT CONTROL IS NEEDED PLEASE CONTACT THE LOCATION AND SURVEYS UNIT.
2. PROJECT CONTROL WAS ESTABLISHED USING GNSS, THE GLOBAL NAVIGATION SATELLITE SYSTEM.
3. RIGHT OF WAY MONUMENTATION ESTABLISHED FEBRUARY 1 TO MARCH 1, 2022.