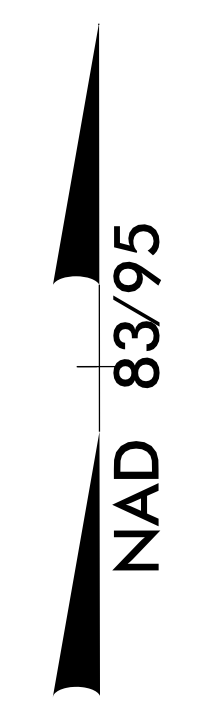
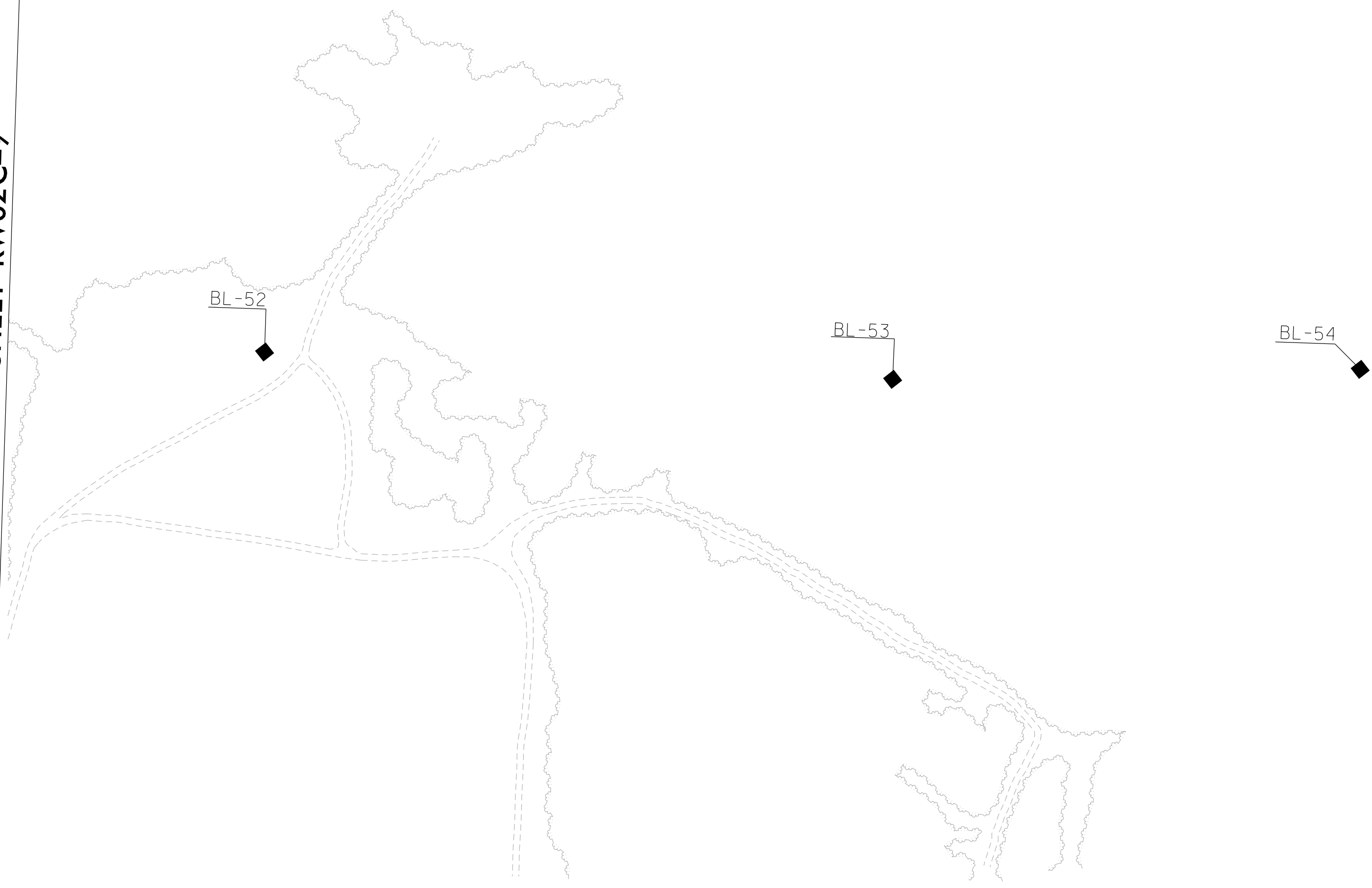


6/2/09

REVISIONS

10-MAR-2022 08:54
C:\Projects\Control_Sheets\ur-2519bb\Final-LET\control_sheets\revised C-series\220302\ur2519bb.ls_rw02c-10.dgn
wilson AT DIV06-314142

MATCHLINE SHEET RW02C-9



SURVEY CONTROL SHEET

W/ EXISTING CENTERLINE ALIGNMENTS PRIOR TO CONSTRUCTION

PROJECT REFERENCE NO.	SHEET NO.
U-2519BB	RW02C-10
Location and Surveys	
NCDOT LOCATION & SURVEYS DIVISION 6 FIELD OFFICE	

NOTES:

1. PROJECT CONTROL WAS ESTABLISHED USING GNSS, THE GLOBAL NAVIGATION SATELLITE SYSTEM.
2. THE SURVEY CONTROL DATA FOR THIS PROJECT HAS BEEN COMPILED FROM VARIOUS SOURCES. IF FURTHER INFORMATION REGARDING PROJECT CONTROL IS NEEDED, PLEASE CONTACT THE LOCATION AND SURVEYS UNIT.