

**This electronic collection of documents is provided
for the convenience of the user
and is Not a Certified Document –**

**The documents contained herein were originally issued
and sealed by the individuals whose names and license
numbers appear on each page, on the dates appearing
with their signature on that page.**

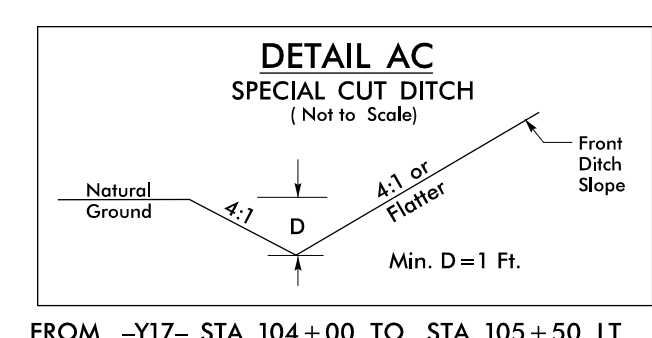
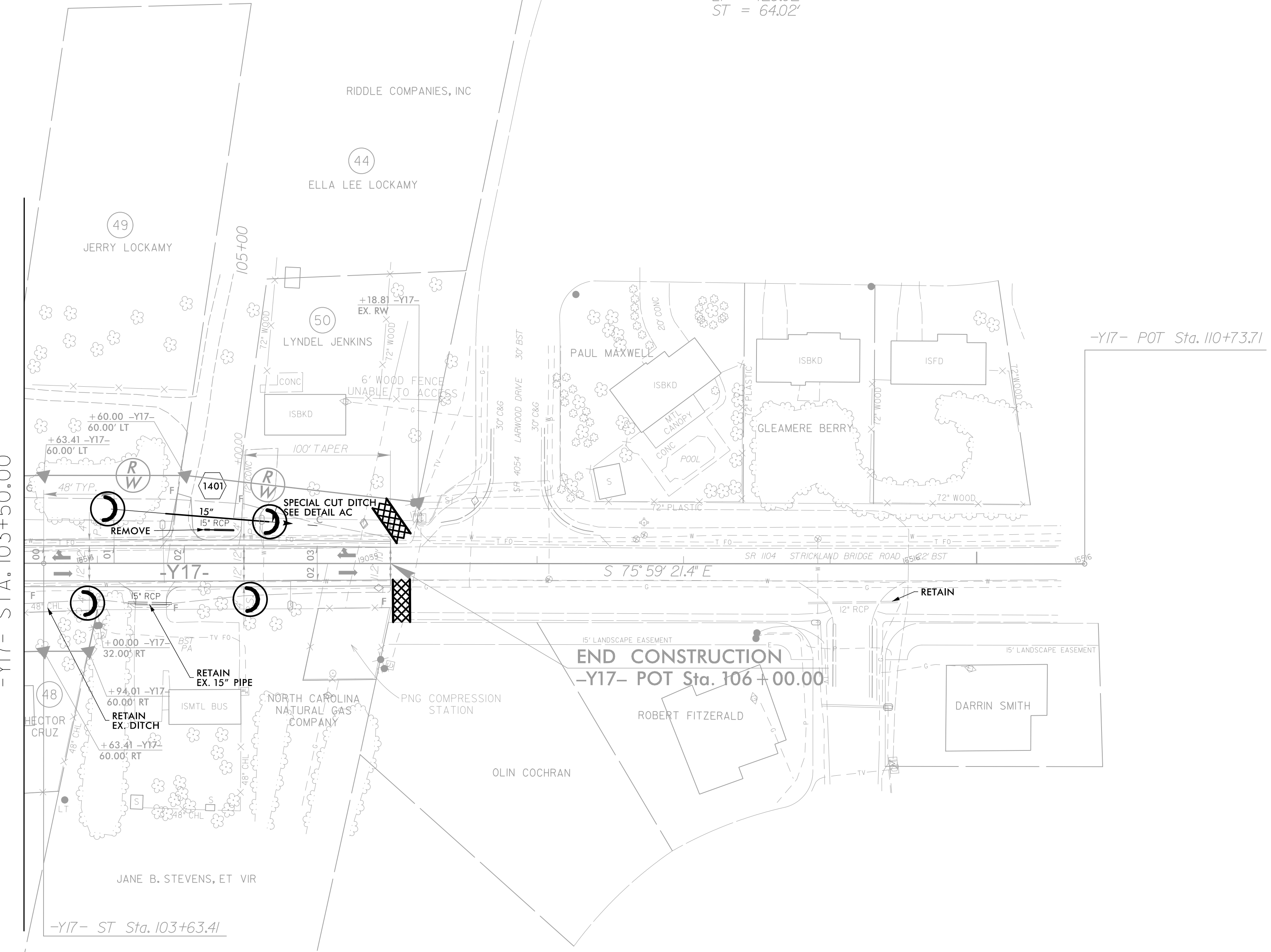
**This file or an individual page
shall not be considered a certified document.**

PROJECT REFERENCE NO.	SHEET NO.
U-2519BB	EC-34/CONST.14
RW SHEET NO.	
ROADWAY DESIGN ENGINEER	HYDRAULICS ENGINEER

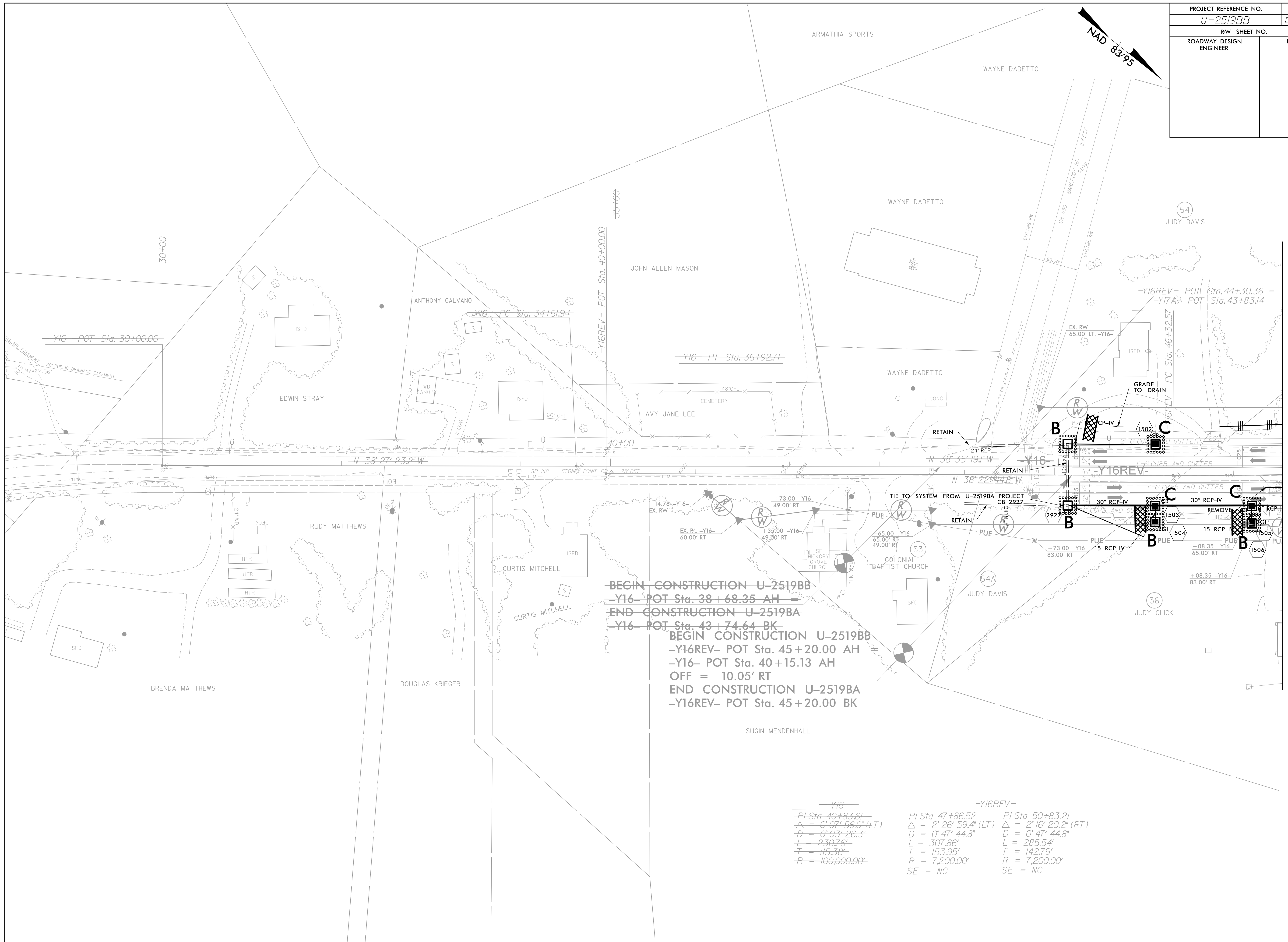
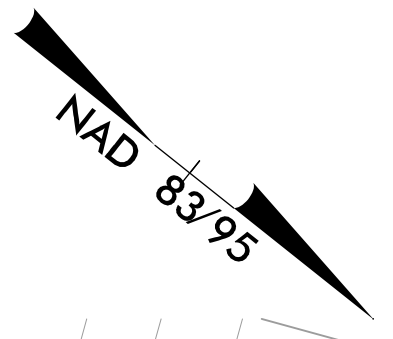
NAD 83/95

-Y17-
 PIs Sta. 102+35.43
 Os = 3° 17' 37.1"
 Ls = 192.00'
 LT = 128.02'
 ST = 64.02'

MATCHLINE SHEET 13
 -Y17- STA. 103+50.00



PROJECT REFERENCE NO.	SHEET NO.
U-2519BB	EC-35/CONST.15
RW SHEET NO.	
ROADWAY DESIGN ENGINEER	HYDRAULICS ENGINEER

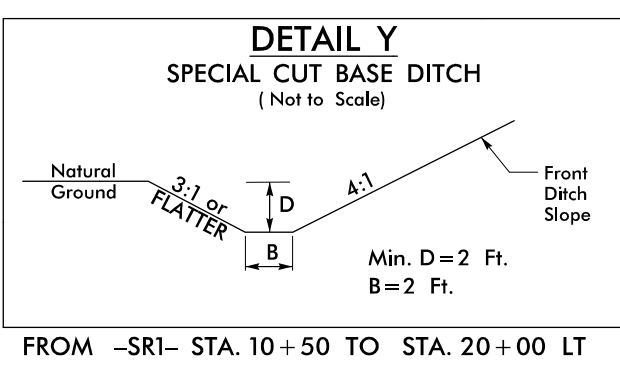
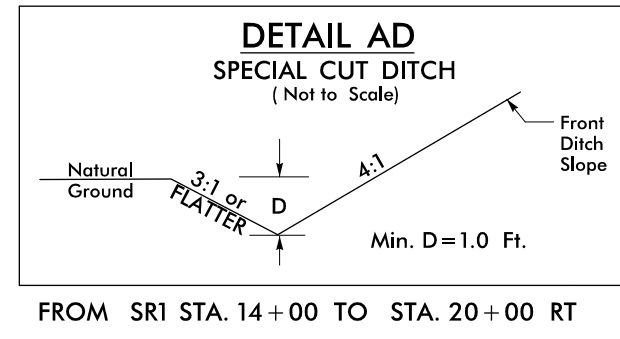
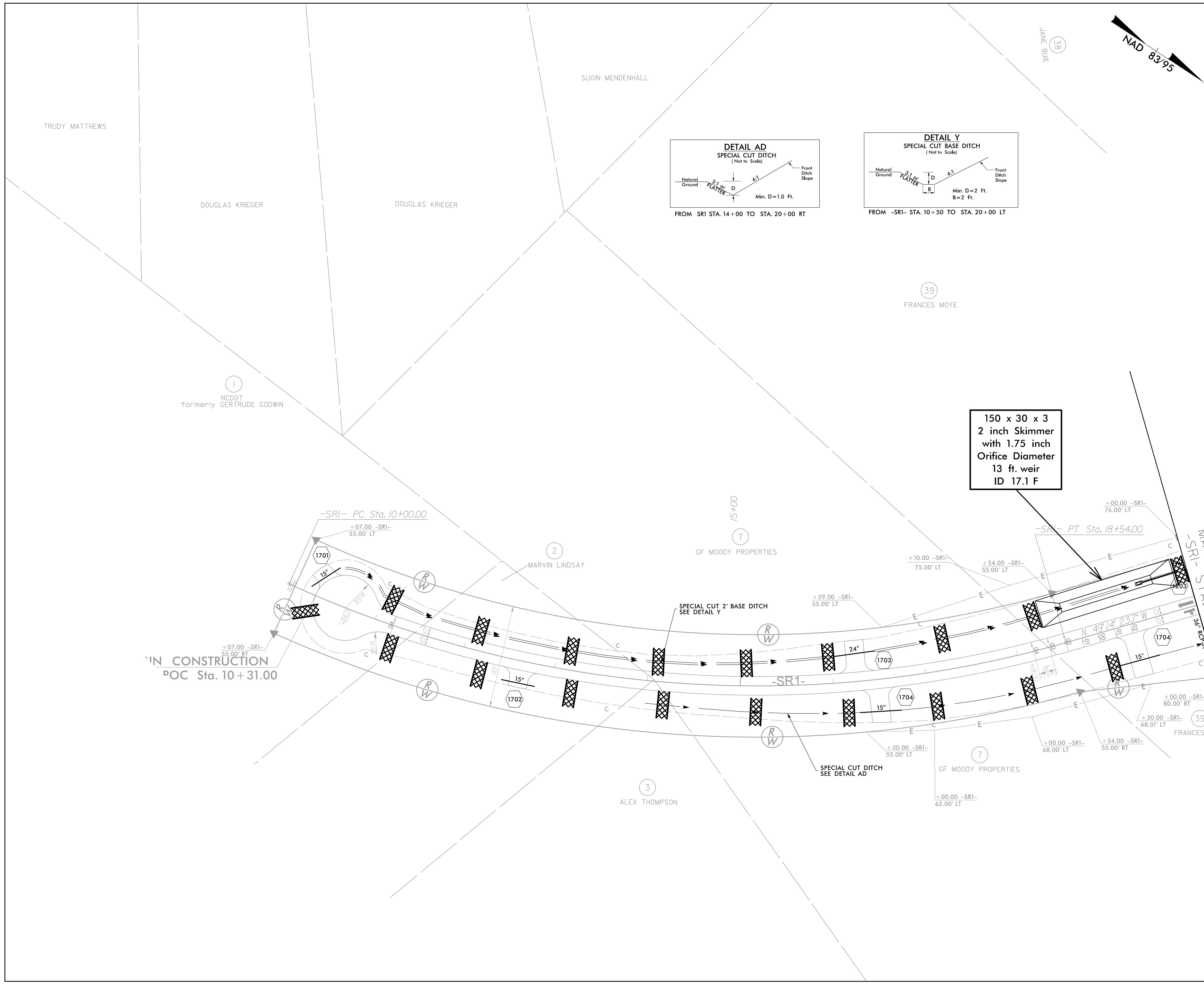
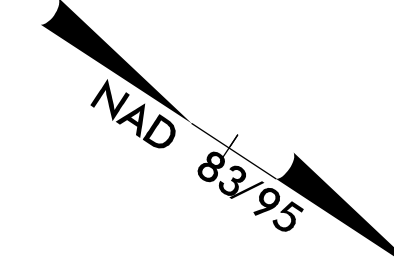


BEGIN CONSTRUCTION U-2519BB
 -Y16- POT Sta. 38+68.35 AH =
END CONSTRUCTION U-2519BA
 -Y16- POT Sta. 43+74.64 BK =
BEGIN CONSTRUCTION U-2519BB
 -Y16REV- POT Sta. 45+20.00 AH =
 -Y16- POT Sta. 40+15.13 AH
 OFF = 10.05' RT
END CONSTRUCTION U-2519BA
 -Y16REV- POT Sta. 45+20.00 BK

-Y16-		-Y16REV-	
PI Sta 40+83.61	PI Sta 47+86.52	PI Sta 50+83.21	
Δ = 0° 07' 56.0" (LT)	Δ = 2° 26' 59.4" (LT)	Δ = 2° 16' 20.2" (RT)	
D = 0° 03' 26.3"	D = 0° 47' 44.8"	D = 0° 47' 44.8"	
L = 230.76'	L = 307.86'	L = 285.54'	
T = 115.38'	T = 153.95'	T = 142.79'	
R = 100,000.00'	R = 7,200.00'	R = 7,200.00'	
	SE = NC	SE = NC	

MATCHLINE SHEET II
-Y16- STA. 42+50.00

PROJECT REFERENCE NO.	SHEET NO.
U-2519BB	EC-37/CONST.17
RW SHEET NO.	
ROADWAY DESIGN ENGINEER	HYDRAULICS ENGINEER



150 x 30 x 3
2 inch Skimmer
with 1.75 inch
Orifice Diameter
13 ft. weir
ID 17.1 F

IN CONSTRUCTION
POC Sta. 10+31.00

MATCHLINE SHEET 12
-SRI- STA. 20+00.00