

REFERENCE: U-2519BA

PROJECT: 34817

STATE OF NORTH CAROLINA  
DEPARTMENT OF TRANSPORTATION  
DIVISION OF HIGHWAYS  
GEOTECHNICAL ENGINEERING UNIT

STATE	STATE PROJECT REFERENCE NO.	SHEET NO.	TOTAL SHEETS
N.C.	U-2519BA	1	9

CONTENTS

SHEET NO.	DESCRIPTION
1	TITLE SHEET
2	LEGEND
3	SITE PLAN
4	PROFILE
5-6	CROSS SECTIONS
7-9	BORE LOGS

**STRUCTURE**  
**SUBSURFACE INVESTIGATION**

COUNTY CUMBERLAND  
PROJECT DESCRIPTION FAYETTEVILLE OUTER LOOP  
FROM SOUTH OF SR 1003 (CAMDEN RD.) TO  
SOUTH OF SR1104 (STRICKLAND BRIDGE RD.)  
SITE DESCRIPTION BRIDGE #451 ON STONEY POINT RD.  
(-Y16-) OVER FAYETTEVILLE OUTER LOOP  
BETWEEN SR 1109 AND SR 1104

CAUTION NOTICE

THE SUBSURFACE INFORMATION AND THE SUBSURFACE INVESTIGATION ON WHICH IT IS BASED WERE MADE FOR THE PURPOSE OF STUDY, PLANNING AND DESIGN, AND NOT FOR CONSTRUCTION OR PAY PURPOSES. THE VARIOUS FIELD BORING LOGS, ROCK CORES AND SOIL TEST DATA AVAILABLE MAY BE REVIEWED OR INSPECTED IN RALEIGH BY CONTACTING THE N. C. DEPARTMENT OF TRANSPORTATION, GEOTECHNICAL ENGINEERING UNIT AT (919) 707-6850. THE SUBSURFACE PLANS AND REPORTS, FIELD BORING LOGS, ROCK CORES AND SOIL TEST DATA ARE NOT PART OF THE CONTRACT.

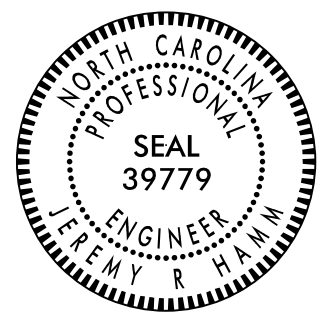
GENERAL SOIL AND ROCK STRATA DESCRIPTIONS AND INDICATED BOUNDARIES ARE BASED ON A GEOTECHNICAL INTERPRETATION OF ALL AVAILABLE SUBSURFACE DATA AND MAY NOT NECESSARILY REFLECT THE ACTUAL SUBSURFACE CONDITIONS BETWEEN BORINGS OR BETWEEN SAMPLED STRATA WITHIN THE BOREHOLE. THE LABORATORY SAMPLE DATA AND THE IN SITU (IN-PLACE) TEST DATA CAN BE RELIED ON ONLY TO THE DEGREE OF RELIABILITY INHERENT IN THE STANDARD TEST METHOD. THE OBSERVED WATER LEVELS OR SOIL MOISTURE CONDITIONS INDICATED IN THE SUBSURFACE INVESTIGATIONS ARE AS RECORDED AT THE TIME OF THE INVESTIGATION. THESE WATER LEVELS OR SOIL MOISTURE CONDITIONS MAY VARY CONSIDERABLY WITH TIME ACCORDING TO CLIMATIC CONDITIONS INCLUDING TEMPERATURES, PRECIPITATION AND WIND, AS WELL AS OTHER NON-CLIMATIC FACTORS.

THE BIDDER OR CONTRACTOR IS CAUTIONED THAT DETAILS SHOWN ON THE SUBSURFACE PLANS ARE PRELIMINARY ONLY AND IN MANY CASES THE FINAL DESIGN DETAILS ARE DIFFERENT. FOR BIDDING AND CONSTRUCTION PURPOSES, REFER TO THE CONSTRUCTION PLANS AND DOCUMENTS FOR FINAL DESIGN INFORMATION ON THIS PROJECT. THE DEPARTMENT DOES NOT WARRANT OR GUARANTEE THE SUFFICIENCY OR ACCURACY OF THE INVESTIGATION MADE, NOR THE INTERPRETATIONS MADE, OR OPINION OF THE DEPARTMENT AS TO THE TYPE OF MATERIALS AND CONDITIONS TO BE ENCOUNTERED. THE BIDDER OR CONTRACTOR IS CAUTIONED TO MAKE SUCH INDEPENDENT SUBSURFACE INVESTIGATIONS AS HE DEEMS NECESSARY TO SATISFY HIMSELF AS TO CONDITIONS TO BE ENCOUNTERED ON THE PROJECT. THE CONTRACTOR SHALL HAVE NO CLAIM FOR ADDITIONAL COMPENSATION OR FOR AN EXTENSION OF TIME FOR ANY REASON RESULTING FROM THE ACTUAL CONDITIONS ENCOUNTERED AT THE SITE DIFFERING FROM THOSE INDICATED IN THE SUBSURFACE INFORMATION.

- NOTES:
- THE INFORMATION CONTAINED HEREIN IS NOT IMPLIED OR GUARANTEED BY THE N. C. DEPARTMENT OF TRANSPORTATION AS ACCURATE NOR IS IT CONSIDERED PART OF THE PLANS, SPECIFICATIONS OR CONTRACT FOR THE PROJECT.
  - BY HAVING REQUESTED THIS INFORMATION, THE CONTRACTOR SPECIFICALLY WAIVES ANY CLAIMS FOR INCREASED COMPENSATION OR EXTENSION OF TIME BASED ON DIFFERENCES BETWEEN THE CONDITIONS INDICATED HEREIN AND THE ACTUAL CONDITIONS AT THE PROJECT SITE.

PERSONNEL  
MID ATLANTIC  
GOODNIGHT, D.J.

INVESTIGATED BY GOODNIGHT, D.J.  
DRAWN BY HILL, M.J.  
CHECKED BY HAMM, J.R.  
SUBMITTED BY FALCON ENG.  
DATE MAY 2017



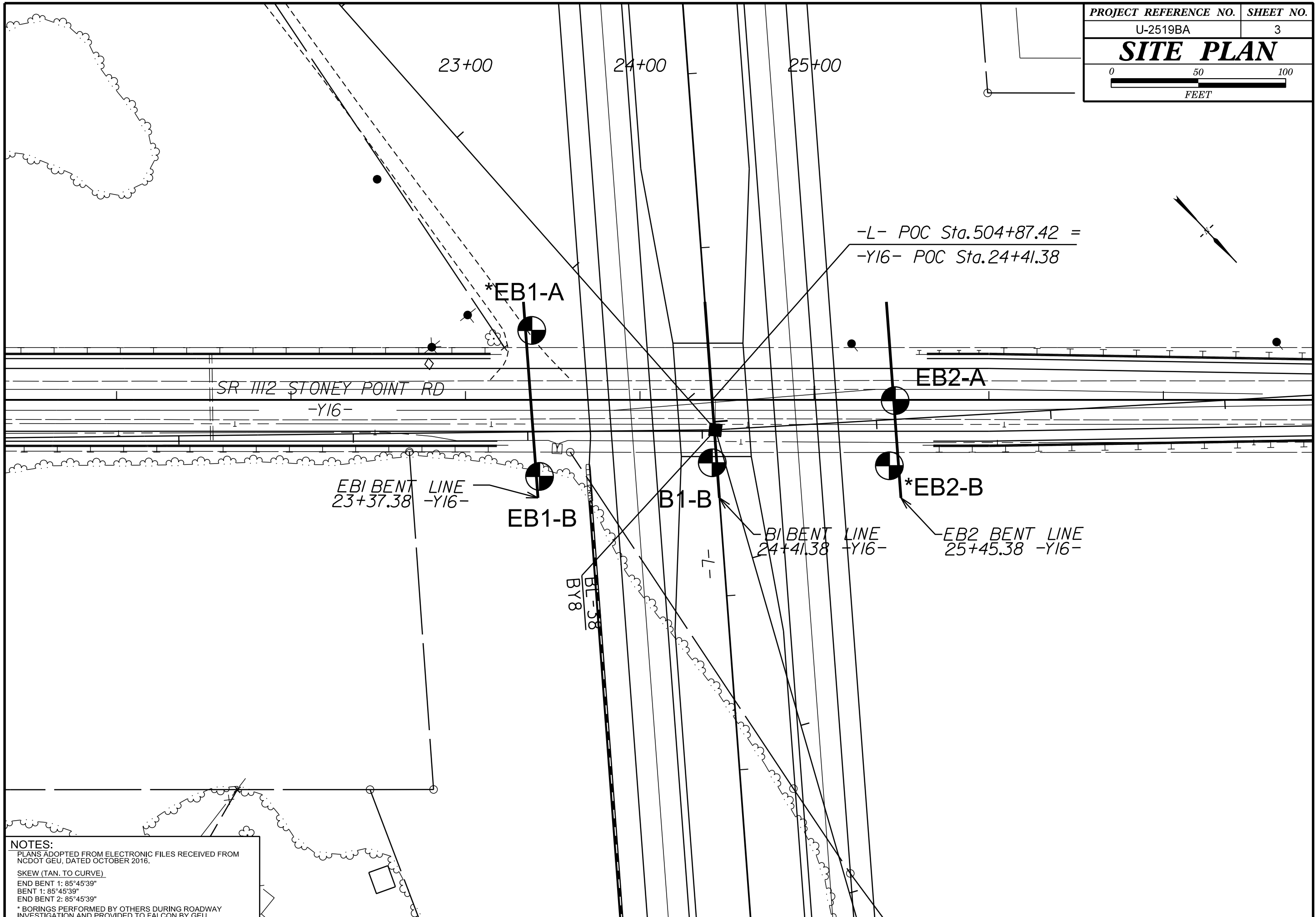
DocuSigned by:  
Jeremy R Hamm 6/8/2017  
ED7938089E22487...  
SIGNATURE DATE

**DOCUMENT NOT CONSIDERED FINAL  
UNLESS ALL SIGNATURES COMPLETED**

NORTH CAROLINA DEPARTMENT OF TRANSPORTATION
DIVISION OF HIGHWAYS
GEOTECHNICAL ENGINEERING UNIT
SUBSURFACE INVESTIGATION

SOIL AND ROCK LEGEND, TERMS, SYMBOLS, AND ABBREVIATIONS

Table with 4 main columns: SOIL DESCRIPTION, GRADATION, ROCK DESCRIPTION, and TERMS AND DEFINITIONS. It contains detailed technical specifications, classification charts, and symbols for geotechnical engineering.



-L- POC Sta.504+87.42 =  
 -Y16- POC Sta.24+41.38

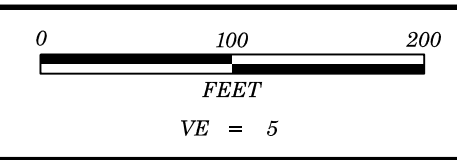
SR III2 STONEY POINT RD  
 -Y16-

EB1 BENT LINE  
 23+37.38 -Y16-

B1 BENT LINE  
 24+41.38 -Y16-

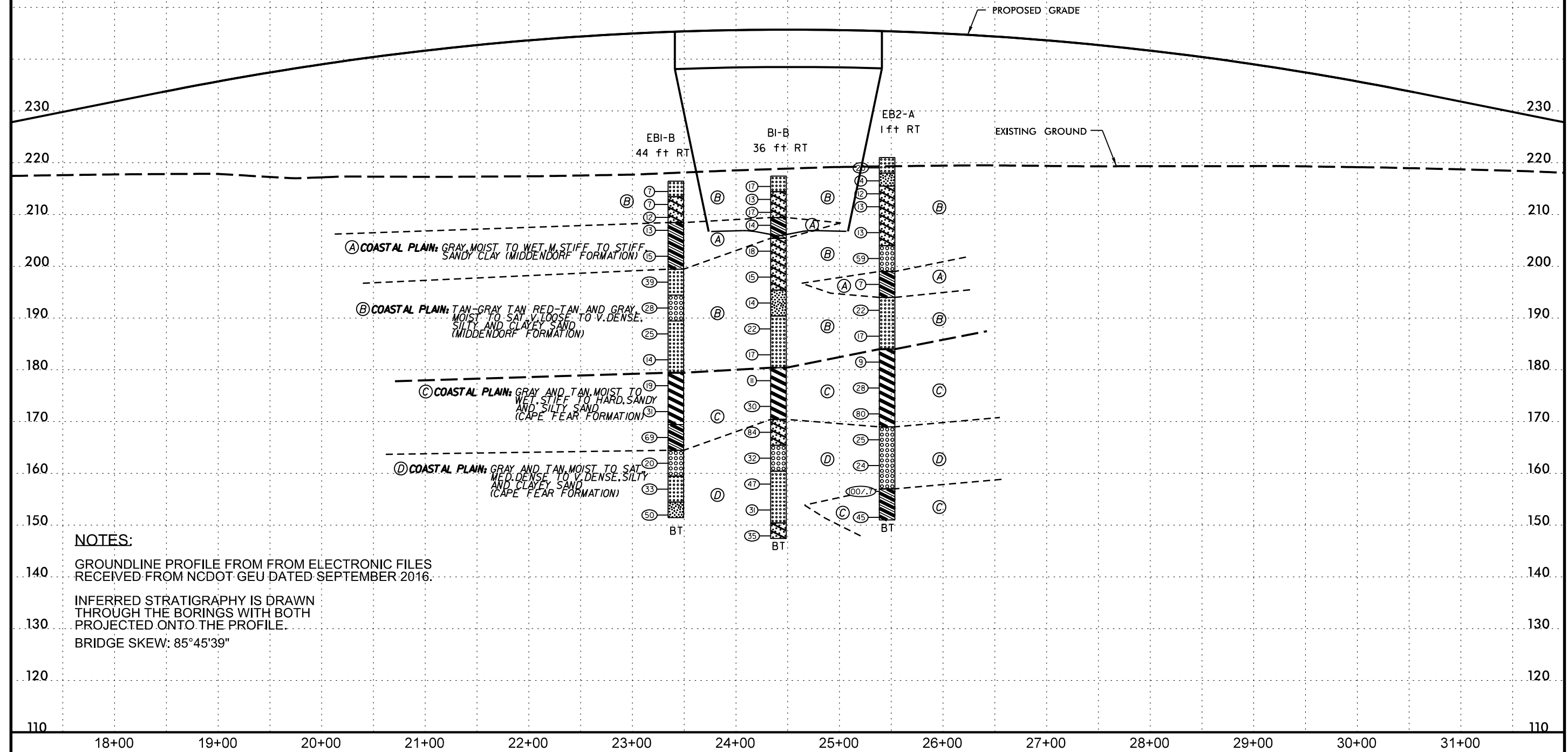
EB2 BENT LINE  
 25+45.38 -Y16-

**NOTES:**  
 PLANS ADOPTED FROM ELECTRONIC FILES RECEIVED FROM  
 NCDOT GEU, DATED OCTOBER 2016.  
 SKEW (TAN. TO CURVE)  
 END BENT 1: 85°45'39"  
 BENT 1: 85°45'39"  
 END BENT 2: 85°45'39"  
 \* BORINGS PERFORMED BY OTHERS DURING ROADWAY  
 INVESTIGATION AND PROVIDED TO FALCON BY GEU.



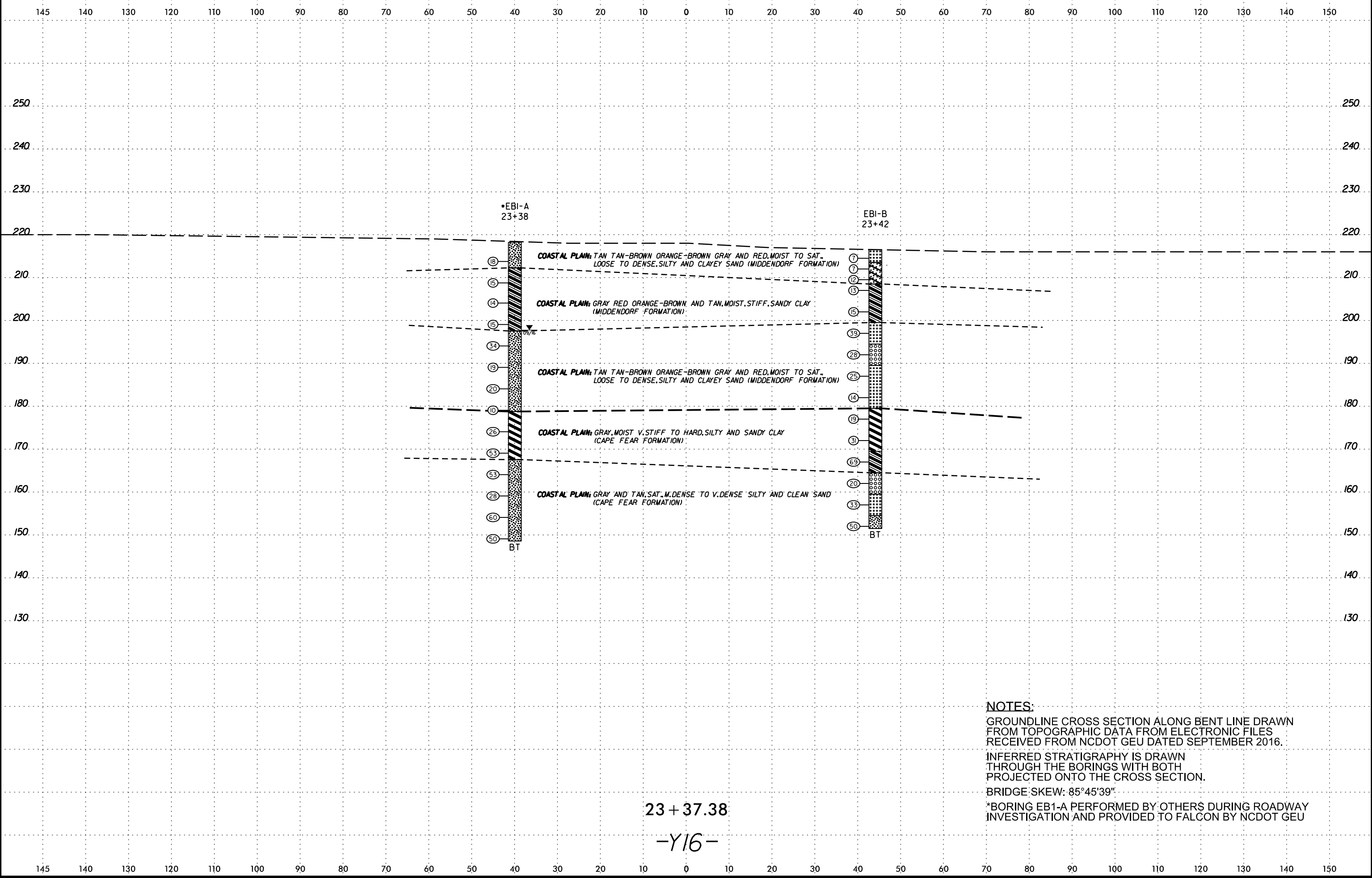
<b>PROJECT REFERENCE NO.</b>	<b>SHEET NO.</b>
U-2519BA	4
<b>BRIDGE NO. 451 ON STONEY POINT RD. (-Y16) OVER FAYETTEVILLE OUTER LOOP</b>	

# -Y16-



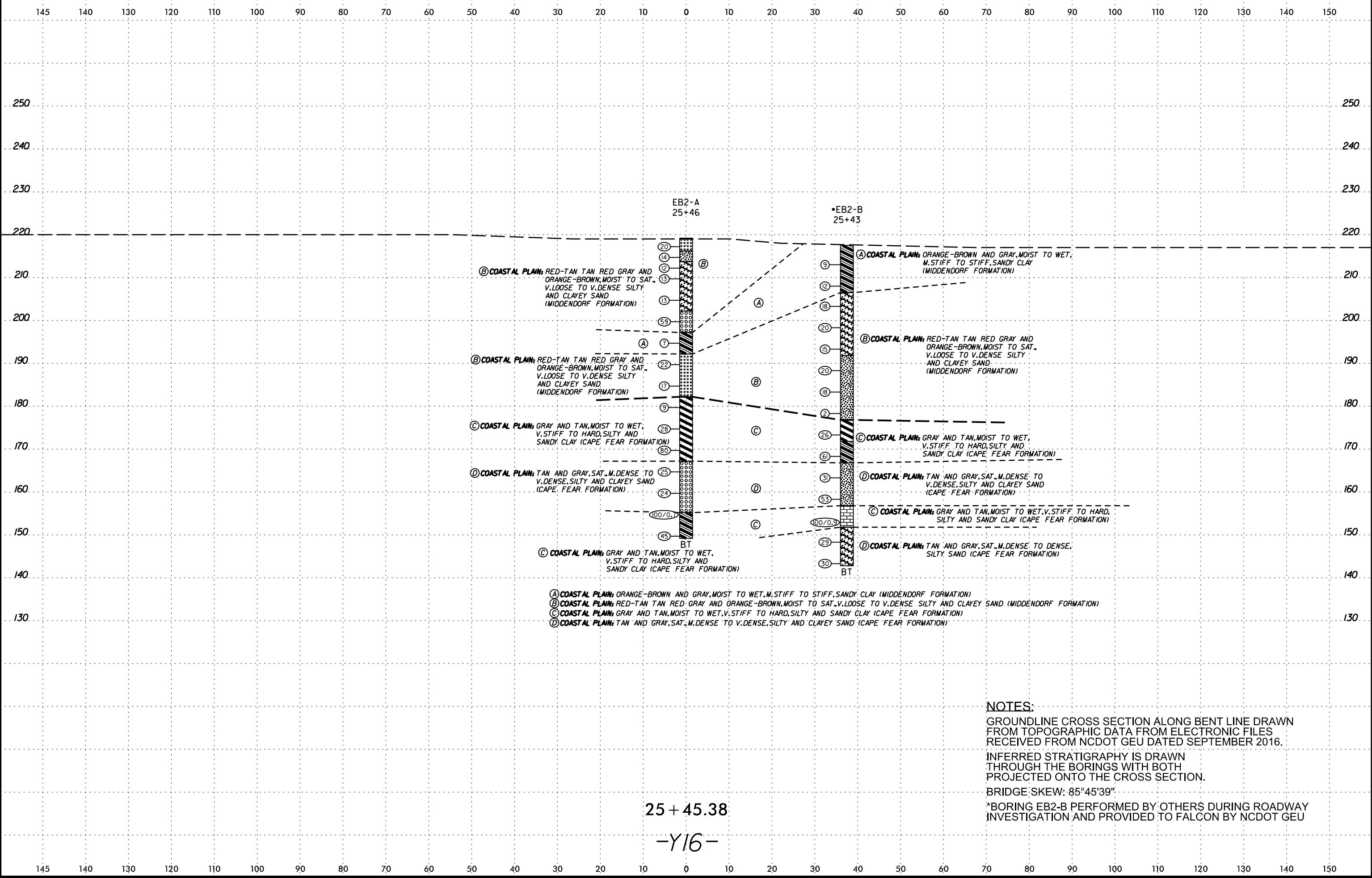
**NOTES:**  
 GROUNDLINE PROFILE FROM FROM ELECTRONIC FILES RECEIVED FROM NCDOT GEU DATED SEPTEMBER 2016.  
 INFERRED STRATIGRAPHY IS DRAWN THROUGH THE BORINGS WITH BOTH PROJECTED ONTO THE PROFILE.  
 BRIDGE SKEW: 85°45'39"

8/23/99



I:\Projects\2017\017005.00 NCDOT GEU U-2519BA Sites 1,3&4\U2519BA\_GEO\_BRDG\_SITE\_A\CADD\GEO\TECH\XSEC\U2519BA\_GEO\_XS1.dgn  
 19-APR-2017 11:46  
 cadmschirne AT GEU1-4

8/23/99



25 + 45.38

-Y16-

**NOTES:**

GROUNDLINE CROSS SECTION ALONG BENT LINE DRAWN FROM TOPOGRAPHIC DATA FROM ELECTRONIC FILES RECEIVED FROM NCDOT GEU DATED SEPTEMBER 2016.

INFERRED STRATIGRAPHY IS DRAWN THROUGH THE BORINGS WITH BOTH PROJECTED ONTO THE CROSS SECTION.

BRIDGE SKEW: 85°45'39"

\*BORING EB2-B PERFORMED BY OTHERS DURING ROADWAY INVESTIGATION AND PROVIDED TO FALCON BY NCDOT GEU

26-APR-2017 15:06  
 I:\Projects\2017\U2519BA\G17005.00 NCDOT GEU U-2519BA Sites 1,3&4\U2519BA\_GEO\_BRDG\_SITE\_4\CADD\GEO\TECH\XSEC\U2519BA\_GEO\_XS1.dgn  
 cadmschne

# GEOTECHNICAL BORING REPORT

## BORE LOG

WBS 34817.1.FR7		TIP U-2519BA		COUNTY CUMBERLAND		GEOLOGIST Smith, B.											
SITE DESCRIPTION Bridge No. 451 on Stoney Point Rd. (-Y16-) over Fayetteville Outer Loop (-L-)							GROUND WTR (ft)										
BORING NO. EB1-A		STATION 23+38		OFFSET 40 ft LT		ALIGNMENT -Y16-											
COLLAR ELEV. 218.4 ft		TOTAL DEPTH 69.7 ft		NORTHING 453,354		EASTING 1,988,577											
DRILL RIG/HAMMER EFF./DATE SUM0093 DIEDRICH D-50 76% 11/09/2016			DRILL METHOD Mud Rotary		HAMMER TYPE Automatic												
DRILLER Moseley, M.		START DATE 09/22/16		COMP. DATE 09/22/16		SURFACE WATER DEPTH N/A											
ELEV (ft)	DRIVE ELEV (ft)	DEPTH (ft)	BLOW COUNT			BLOWS PER FOOT					SAMP. NO.	LOG	SOIL AND ROCK DESCRIPTION	DEPTH (ft)			
			0.5ft	0.5ft	0.5ft	0	25	50	75	100							
220														218.4	0.0	GROUND SURFACE	
215	214.9	3.5	3	8	10								M	212.4	6.0	COASTAL PLAIN TAN-BROWN AND ORANGE-BROWN, SILTY SAND (MIDDENDORF FORMATION)	
210	209.9	8.5	6	7	8								M			GRAY, RED AND ORANGE-BROWN, SANDY CLAY	
205	205.2	13.2	3	7	7								M				
200	200.2	18.2	3	4	11								M				
195	195.2	23.2	17	20	14								Sat.	197.7	20.7	ORANGE-BROWN, GRAY AND RED, SILTY SAND WITH TRACE TO LITTLE CLAY	
190	190.2	28.2	2	7	12								Sat.				
185	185.2	33.2	8	9	11								Sat.				
180	180.2	38.2	7	4	6								Sat.	178.9	39.5	COASTAL PLAIN GRAY, SILTY CLAY (CAPE FEAR FORMATION)	
175	175.2	43.2	5	11	15								M				
170	170.2	48.2	10	20	33								M				
165	165.2	53.2	31	30	23								Sat.	167.7	50.7	GRAY, SILTY SAND	
160	160.2	58.2	11	14	14								Sat.				
155	155.2	63.2	24	28	32								Sat.				
150	150.2	68.2	20	28	22								Sat.				
																	Boring Terminated at Elevation 148.7 ft IN COASTAL PLAIN (SILTY SAND)

\*NOTE: BORING PERFORMED BY OTHERS DURING ROADWAY INVESTIGATION AND PROVIDED TO FALCON BY NCDOT GEU.

NCDOT BORE DOUBLE U2519BA\_GEO\_BRDG0451\_SPT\_BORINGS.GPJ NC\_DOT\_GDT 4/19/17

WBS 34817.1.FR7		TIP U-2519BA		COUNTY CUMBERLAND		GEOLOGIST Goodnight, D.										
SITE DESCRIPTION BRIDGE NO. 451 ON STONEY POINT RD. (-Y16-) OVER FAYETTEVILLE OUTER LOOP (-L-)							GROUND WTR (ft)									
BORING NO. EB1-B		STATION 23+42		OFFSET 44 ft RT		ALIGNMENT -Y16-										
COLLAR ELEV. 216.5 ft		TOTAL DEPTH 65.0 ft		NORTHING 453,422		EASTING 1,988,626										
DRILL RIG/HAMMER EFF./DATE MID3964 CME-45C 83% 08/09/2016			DRILL METHOD Mud Rotary		HAMMER TYPE Automatic											
DRILLER Wiggins, M.		START DATE 02/17/17		COMP. DATE 02/17/17		SURFACE WATER DEPTH N/A										
ELEV (ft)	DRIVE ELEV (ft)	DEPTH (ft)	BLOW COUNT			BLOWS PER FOOT					SAMP. NO.	LOG	SOIL AND ROCK DESCRIPTION	DEPTH (ft)		
			0.5ft	0.5ft	0.5ft	0	25	50	75	100						
220														216.5	0.0	GROUND SURFACE
215	215.5	1.0	3	4	3								M	213.5	3.0	COASTAL PLAIN LIGHT GRAY, SLIGHTLY SILTY F. SAND (A-3)
210	210.5	6.0	2	3	4								M			(MIDDENDORF FORMATION)
205	208.0	8.5	4	5	7								M	208.5	8.0	RED-TAN, SILTY CLAYEY SAND (A-2-6)
200	203.0	13.5	4	5	8								M			TAN AND GRAY, SANDY CLAY (A-6)
195	198.0	18.5	5	6	9								Sat.	199.5	17.0	TAN, SLIGHTLY SILTY SAND (A-3)
190	193.0	23.5	13	17	22								Sat.	194.5	22.0	TAN, SLIGHTLY CLAYEY F. TO CSE. SAND (A-1-b)
185	188.0	28.5	14	16	12								Sat.	189.5	27.0	TAN, SLIGHTLY SILTY F. SAND (A-3)
180	183.0	33.5	10	11	14								Sat.			
175	178.0	38.5	6	6	8								Sat.	179.5	37.0	COASTAL PLAIN GRAY, SILTY CLAY (A-7) WITH LITTLE ORGANICS (WOOD FRAGMENTS) (CAPE FEAR FORMATION)
170	173.0	43.5	6	7	12								M			
165	168.0	48.5	8	12	19								M	169.5	47.0	GRAY, SANDY CLAY (A-6)
160	163.0	53.5	15	31	38								M	164.5	52.0	GRAY, F. TO CSE. SAND (A-1-b)
155	158.0	58.5	4	8	12								Sat.	159.5	57.0	LIGHT GRAY, SLIGHTLY SILTY SAND (A-3)
150	153.0	63.5	16	15	18								Sat.	154.5	62.0	TAN, SLIGHTLY SILTY F. TO CSE. SAND (A-1-b)
			25	30	20								Sat.	151.5	65.0	Boring Terminated at Elevation 151.5 ft IN COASTAL PLAIN (CAPE FEAR FORMATION)

# GEOTECHNICAL BORING REPORT

## BORE LOG

WBS 34817.1.FR7		TIP U-2519BA		COUNTY CUMBERLAND		GEOLOGIST Goodnight, D.	
SITE DESCRIPTION BRIDGE NO. 451 ON STONEY POINT RD. (-Y16-) OVER FAYETTEVILLE OUTER LOOP (-L-)							GROUND WTR (ft)
BORING NO. B1-B		STATION 24+41		OFFSET 36 ft RT		ALIGNMENT -Y16-	
COLLAR ELEV. 217.4 ft		TOTAL DEPTH 70.0 ft		NORTHING 453,478		EASTING 1,988,544	
DRILL RIG/HAMMER EFF./DATE MID3964 CME-45C 83% 08/09/2016				DRILL METHOD Mud Rotary		HAMMER TYPE Automatic	
DRILLER Wiggins, M.		START DATE 02/16/17		COMP. DATE 02/16/17		SURFACE WATER DEPTH N/A	

ELEV (ft)	DRIVE ELEV (ft)	DEPTH (ft)	BLOW COUNT			BLOWS PER FOOT					SAMP. NO.	LOG	SOIL AND ROCK DESCRIPTION	DEPTH (ft)		
			0.5ft	0.5ft	0.5ft	0	25	50	75	100						
220														217.4	GROUND SURFACE	0.0
215	216.4	1.0	5	9	8								M	214.4	COASTAL PLAIN TAN, F. SAND (A-3) (MIDDENDORF FORMATION)	3.0
	213.9	3.5	6	5	8								M	209.4	TAN, SILTY CLAYEY SAND (A-2-6)	8.0
	211.4	6.0	4	6	8								M	205.4	GRAY, SANDY CLAY (A-6)	12.0
	208.9	8.5	5	8	10								M	195.4	TAN-GRAY, CLAYEY SILTY SAND (A-2-6)	22.0
	203.9	13.5	3	6	9								M	190.4	TAN-GRAY, CLAYEY SILTY SAND (A-2-5)	27.0
	198.9	18.5	10	12	10								W	180.4	TAN, F. SAND (A-3)	37.0
	193.9	23.5	6	8	9								Sat.	170.4	COASTAL PLAIN GRAY, SILTY CLAY (A-7) (CAPE FEAR FORMATION)	47.0
	188.9	28.5	7	12	18								M	165.4	GRAY, CLAYEY SAND (A-2-6)	52.0
	183.9	33.5	26	37	47								M	160.4	GRAY, SLIGHTLY SILTY F. TO CSE. SAND (A-1-b)	57.0
	178.9	38.5	11	16	16								Sat.	150.4	GRAY, SLIGHTLY SILTY SAND (A-3)	67.0
	173.9	43.5	15	21	26								Sat.	147.4	LIGHT GRAY, CLAYEY SAND (A-2-6)	70.0
	168.9	48.5	19	17	14								Sat.		Boring Terminated at Elevation 147.4 ft IN COASTAL PLAIN (CAPE FEAR FORMATION)	
	163.9	53.5	12	15	20								Sat.			
	158.9	58.5														
	153.9	63.5														
	148.9	68.5														

WBS 34817.1.FR7		TIP U-2519BA		COUNTY CUMBERLAND		GEOLOGIST Goodnight, D.	
SITE DESCRIPTION BRIDGE NO. 451 ON STONEY POINT RD. (-Y16-) OVER FAYETTEVILLE OUTER LOOP (-L-)							GROUND WTR (ft)
BORING NO. EB2-A		STATION 25+46		OFFSET 1 ft RT		ALIGNMENT -Y16-	
COLLAR ELEV. 219.2 ft		TOTAL DEPTH 70.0 ft		NORTHING 453,516		EASTING 1,988,440	
DRILL RIG/HAMMER EFF./DATE MID3964 CME-45C 83% 08/09/2016				DRILL METHOD Mud Rotary		HAMMER TYPE Automatic	
DRILLER Wiggins, M.		START DATE 02/17/17		COMP. DATE 02/17/17		SURFACE WATER DEPTH N/A	

ELEV (ft)	DRIVE ELEV (ft)	DEPTH (ft)	BLOW COUNT			BLOWS PER FOOT					SAMP. NO.	LOG	SOIL AND ROCK DESCRIPTION	DEPTH (ft)		
			0.5ft	0.5ft	0.5ft	0	25	50	75	100						
220														219.2	GROUND SURFACE	0.0
215	218.2	1.0	9	10	10								M	216.2	COASTAL PLAIN TAN, F. SAND (A-3) (MIDDENDORF FORMATION)	3.0
	215.7	3.5	4	6	8								M	213.7	RED-TAN, SLIGHTLY SILTY F. SAND (A-2-4)	5.5
	213.2	6.0	3	5	7								M	209.4	RED-TAN, SILTY CLAYEY F. SAND (A-2-6)	8.0
	210.7	8.5	5	6	7								M	205.4	TAN, SLIGHTLY SILTY F. TO CSE. SAND (A-1-b)	17.0
	205.7	13.5	13	26	33								W	197.2	GRAY, SANDY CLAY (A-6)	22.0
	200.7	18.5	3	3	4								W	192.2	RED-GRAY, SLIGHTLY SILTY SAND (A-3)	27.0
	195.7	23.5	17	14	8								Sat.	182.2	COASTAL PLAIN GRAY AND TAN, SANDY SILTY CLAY (A-7) WITH LITTLE ORGANICS (CAPE FEAR FORMATION)	37.0
	185.7	33.5	6	7	10								Sat.	167.2	TAN AND GRAY, SLIGHTLY SILTY F. TO CSE. SAND (A-1-b)	52.0
	180.7	38.5	4	2	7								W	155.2	GRAY, SANDY CLAY (A-6)	64.0
	175.7	43.5	7	11	17								M	149.2	Boring Terminated at Elevation 149.2 ft IN COASTAL PLAIN (CAPE FEAR FORMATION)	70.0
	170.7	48.5	13	30	50								M			
	165.7	53.5	8	12	13								Sat.			
	160.7	58.5	10	10	14								Sat.			
	155.7	63.5	19	60	40/0.2								M			
	150.7	68.5	12	21	24								M			

NCDOT BORE DOUBLE U2519BA\_GEO\_BRDG0451\_SPT\_BORINGS.GPJ NC\_DOT\_GDT 4/19/17



# GEOTECHNICAL BORING REPORT

## BORE LOG

<b>WBS</b> 34817.1.FR7	<b>TIP</b> U-2519BA	<b>COUNTY</b> CUMBERLAND	<b>GEOLOGIST</b> Smith, B.
<b>SITE DESCRIPTION</b> Bridge No. 451 on Stoney Point Rd. (-Y16-) over Fayetteville Outer Loop (-L-)			<b>GROUND WTR (ft)</b>
<b>BORING NO.</b> EB2-B	<b>STATION</b> 25+43	<b>OFFSET</b> 38 ft RT	<b>ALIGNMENT</b> -Y16-
<b>COLLAR ELEV.</b> 217.5 ft	<b>TOTAL DEPTH</b> 74.7 ft	<b>NORTHING</b> 453,543	<b>EASTING</b> 1,988,466
<b>DRILL RIG/HAMMER EFF./DATE</b> SUM0093 DIEDRICH D-50 76% 11/09/2016		<b>DRILL METHOD</b> Mud Rotary	<b>HAMMER TYPE</b> Automatic
<b>DRILLER</b> Moseley, M.	<b>START DATE</b> 10/03/16	<b>COMP. DATE</b> 10/03/16	<b>SURFACE WATER DEPTH</b> N/A

ELEV (ft)	DRIVE ELEV (ft)	DEPTH (ft)	BLOW COUNT			BLOWS PER FOOT					SAMP. NO.	LOG	SOIL AND ROCK DESCRIPTION	DEPTH (ft)		
			0.5ft	0.5ft	0.5ft	0	25	50	75	100						
220																
														217.5	GROUND SURFACE	0.0
215	214.0	3.5	3	4	5								M	COASTAL PLAIN GRAY AND ORANGE-BROWN, SANDY CLAY (MIDDENDORF FORMATION)		
210	209.0	8.5	3	5	7											
205	204.3	13.2	5	7	11								Sat.	GRAY, RED, AND ORANGE-BROWN, CLAYEY SAND AND SILTY SAND WITH TRACE TO LITTLE CLAY	11.0	
200	199.3	18.2	3	8	12								Sat.			
195	194.3	23.2	3	7	8								Sat.			
190	189.3	28.2	7	8	12								Sat.			
185	184.3	33.2	6	8	10								Sat.			
180	179.3	38.2	3	0	2								Sat.			
175	174.3	43.2	6	10	16								M	COASTAL PLAIN GRAY, SILTY CLAY AND SANDY CLAY (CAPE FEAR FORMATION)	40.7	
170	169.3	48.2	12	20	41								W		45.7	
165	164.3	53.2	6	14	17								Sat.	GRAY, SILTY SAND	50.7	
160	159.3	58.2	22	23	30								Sat.			
155	154.3	63.2	20	41	59/0.4								Sat.	COASTAL PLAIN SEDIMENTARY ROCK (MUDSTONE)	60.7	
150	149.3	68.2	11	12	17								Sat.	COASTAL PLAIN GRAY, CLAYEY SAND	65.7	
145	144.3	73.2	9	13	17								Sat.			
															Boring Terminated at Elevation 142.8 ft IN COASTAL PLAIN (CLAYEY SAND)	74.7

NCDOT BORE DOUBLE U2519BA\_GEO\_BRDG0451\_SPT\_BORINGS.GPJ NC\_DOT\_GDT 4/19/17

\*NOTE: BORING PERFORMED BY OTHERS DURING ROADWAY INVESTIGATION AND PROVIDED TO FALCON BY NCDOT GEU.