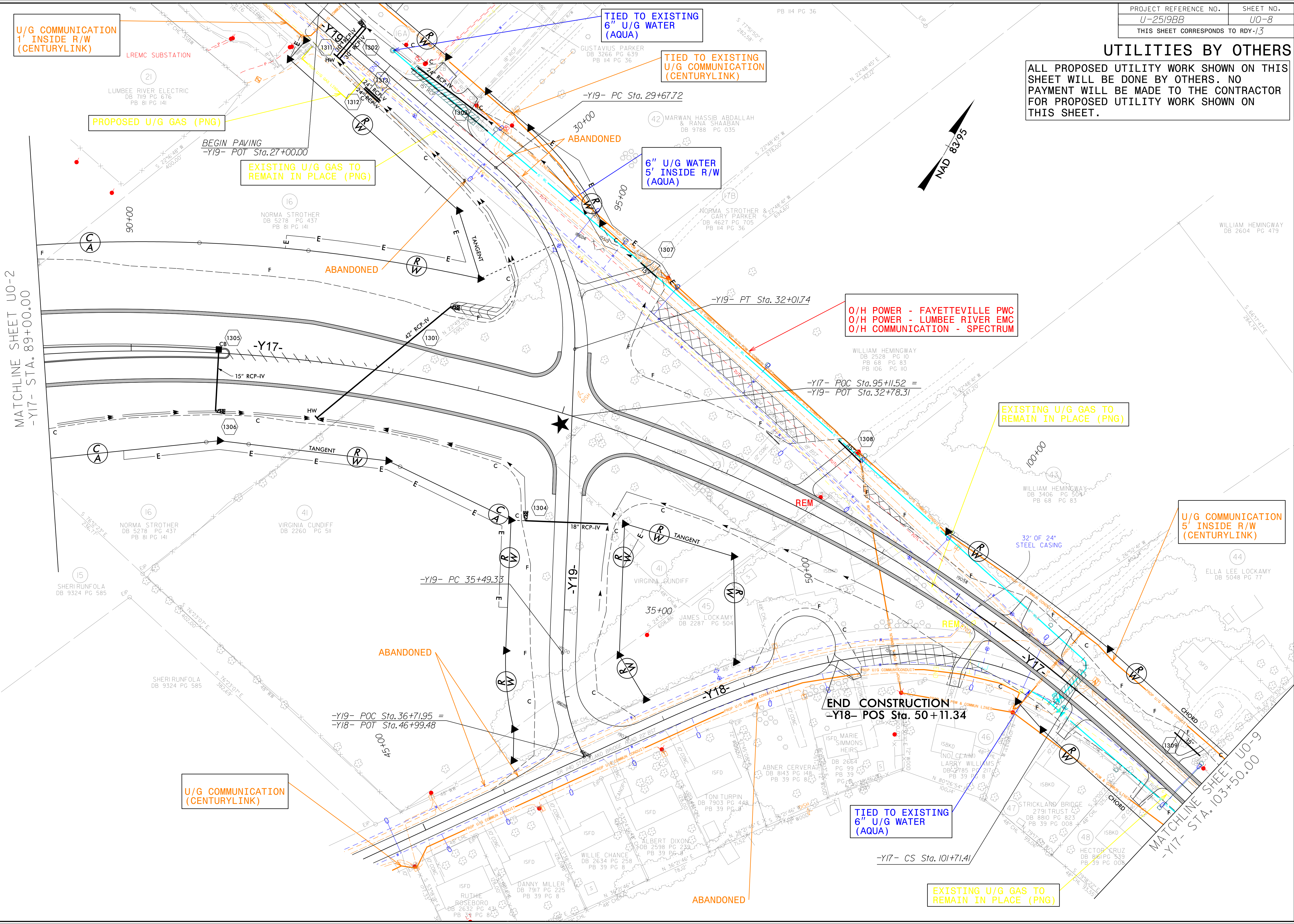


### UTILITIES BY OTHERS

ALL PROPOSED UTILITY WORK SHOWN ON THIS SHEET WILL BE DONE BY OTHERS. NO PAYMENT WILL BE MADE TO THE CONTRACTOR FOR PROPOSED UTILITY WORK SHOWN ON THIS SHEET.



U/G COMMUNICATION  
1" INSIDE R/W  
(CENTURYLINK)

TIED TO EXISTING  
6" U/G WATER  
(AQUA)

TIED TO EXISTING  
U/G COMMUNICATION  
(CENTURYLINK)

PROPOSED U/G GAS (PNG)

EXISTING U/G GAS TO  
REMAIN IN PLACE (PNG)

6" U/G WATER  
5' INSIDE R/W  
(AQUA)

O/H POWER - FAYETTEVILLE PWC  
O/H POWER - LUMBEE RIVER EMC  
O/H COMMUNICATION - SPECTRUM

EXISTING U/G GAS TO  
REMAIN IN PLACE (PNG)

U/G COMMUNICATION  
5" INSIDE R/W  
(CENTURYLINK)

END CONSTRUCTION  
-Y18- POS Sta. 50 + 11.34

U/G COMMUNICATION  
(CENTURYLINK)

TIED TO EXISTING  
6" U/G WATER  
(AQUA)

EXISTING U/G GAS TO  
REMAIN IN PLACE (PNG)

MATCHLINE SHEET U0-2  
-Y17- STA. 89+00.00

MATCHLINE SHEET U0-9  
-Y17- STA. 103+50.00

5/7/14/99  
4/36/19 PV (B0) ProJ\U2519BB.ut.rdy\13\_U08\_psh.dgn  
Utilities (Engineering)