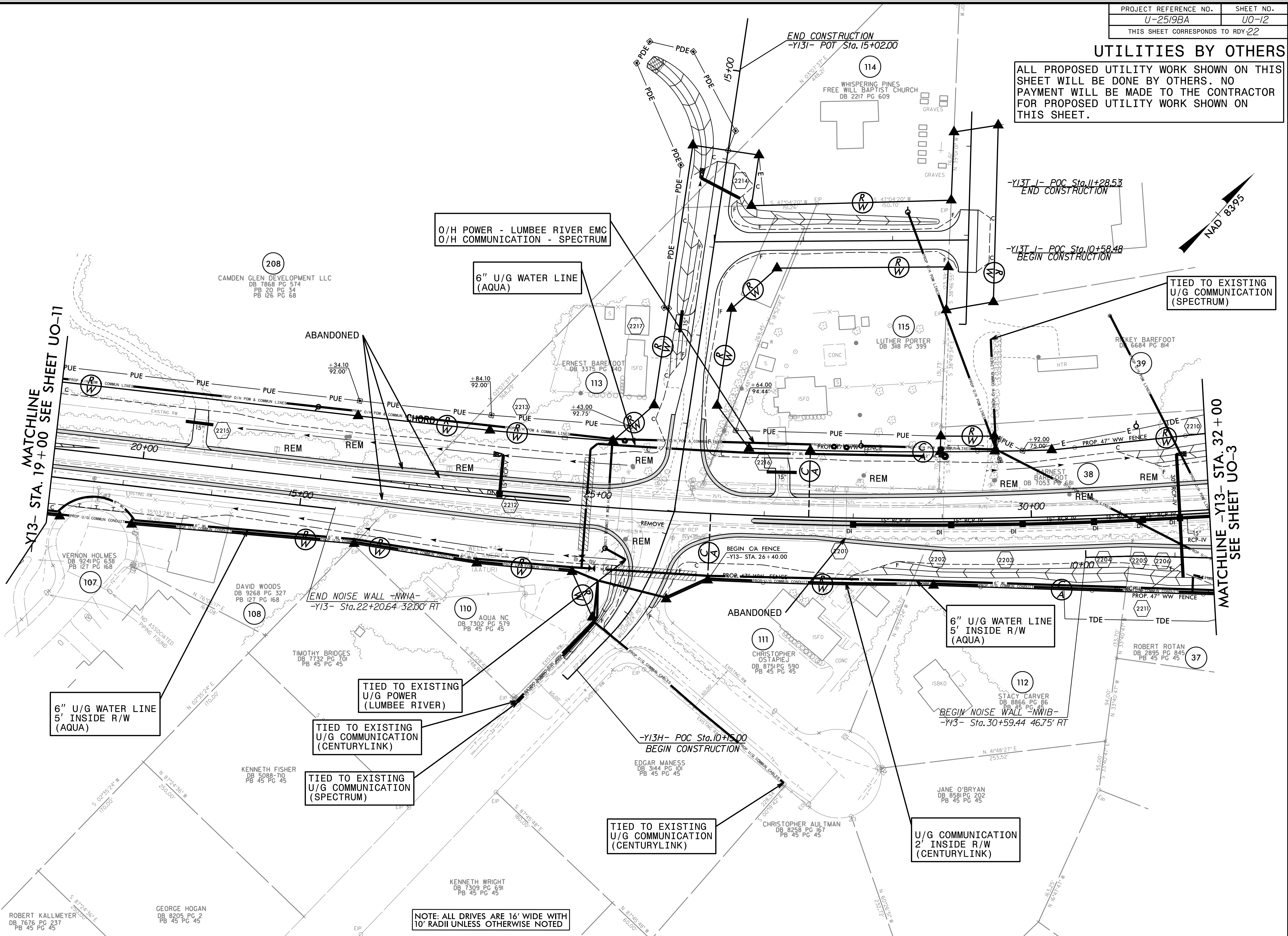
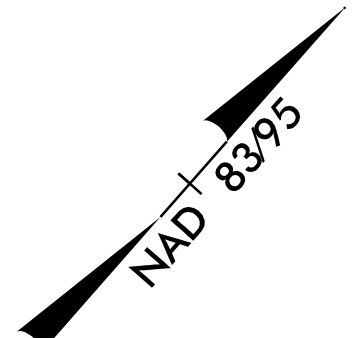


UTILITIES BY OTHERS

ALL PROPOSED UTILITY WORK SHOWN ON THIS SHEET WILL BE DONE BY OTHERS. NO PAYMENT WILL BE MADE TO THE CONTRACTOR FOR PROPOSED UTILITY WORK SHOWN ON THIS SHEET.



O/H POWER - LUMBEE RIVER EMC
O/H COMMUNICATION - SPECTRUM

6" U/G WATER LINE (AQUA)

TIED TO EXISTING U/G COMMUNICATION (SPECTRUM)

MATCHLINE -Y13- STA. 19+00 SEE SHEET U0-11

MATCHLINE -Y13- STA. 32+00 SEE SHEET U0-3

6" U/G WATER LINE 5' INSIDE R/W (AQUA)

TIED TO EXISTING U/G POWER (LUMBEE RIVER)

TIED TO EXISTING U/G COMMUNICATION (CENTURYLINK)

TIED TO EXISTING U/G COMMUNICATION (SPECTRUM)

TIED TO EXISTING U/G COMMUNICATION (CENTURYLINK)

6" U/G WATER LINE 5' INSIDE R/W (AQUA)

U/G COMMUNICATION 2' INSIDE R/W (CENTURYLINK)

NOTE: ALL DRIVES ARE 16' WIDE WITH 10' RADIUS UNLESS OTHERWISE NOTED

REVISIONS

21-5-15-22
 U:\2519BA\22_U012.psh.dgn
 LISTED BY: [unreadable]

5/14/99