

**This electronic collection of documents is provided
for the convenience of the user
and is Not a Certified Document –**

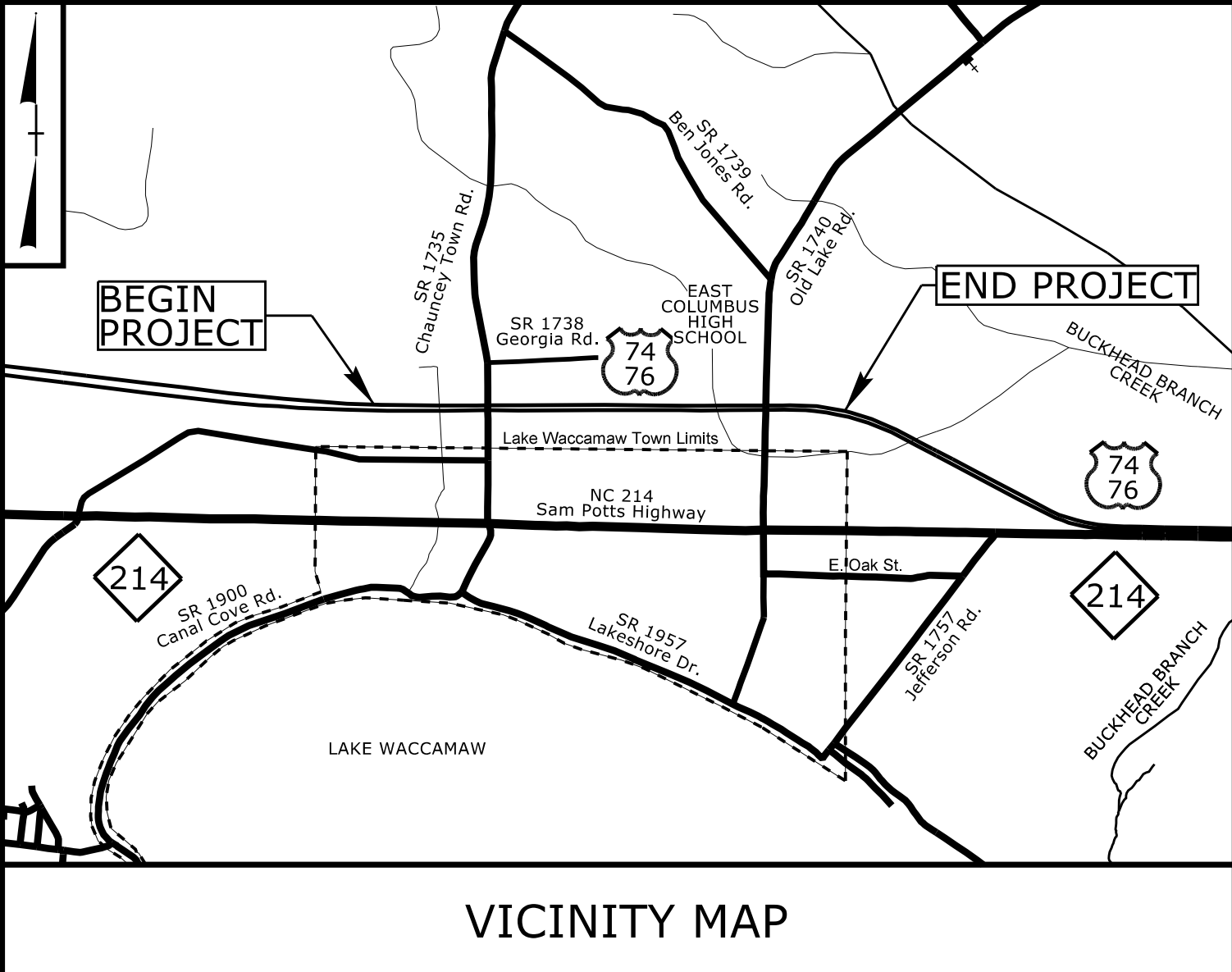
**The documents contained herein were originally issued
and sealed by the individuals whose names and license
numbers appear on each page, on the dates appearing
with their signature on that page.**

**This file or an individual page
shall not be considered a certified document.**

TIP PROJECT: R-5819/R-5820

STATE OF NORTH CAROLINA
DIVISION OF HIGHWAYS

| | |
|---------------|-----------|
| T.I.P. NO. | SHEET NO. |
| R-5819/R-5820 | UO-1 |



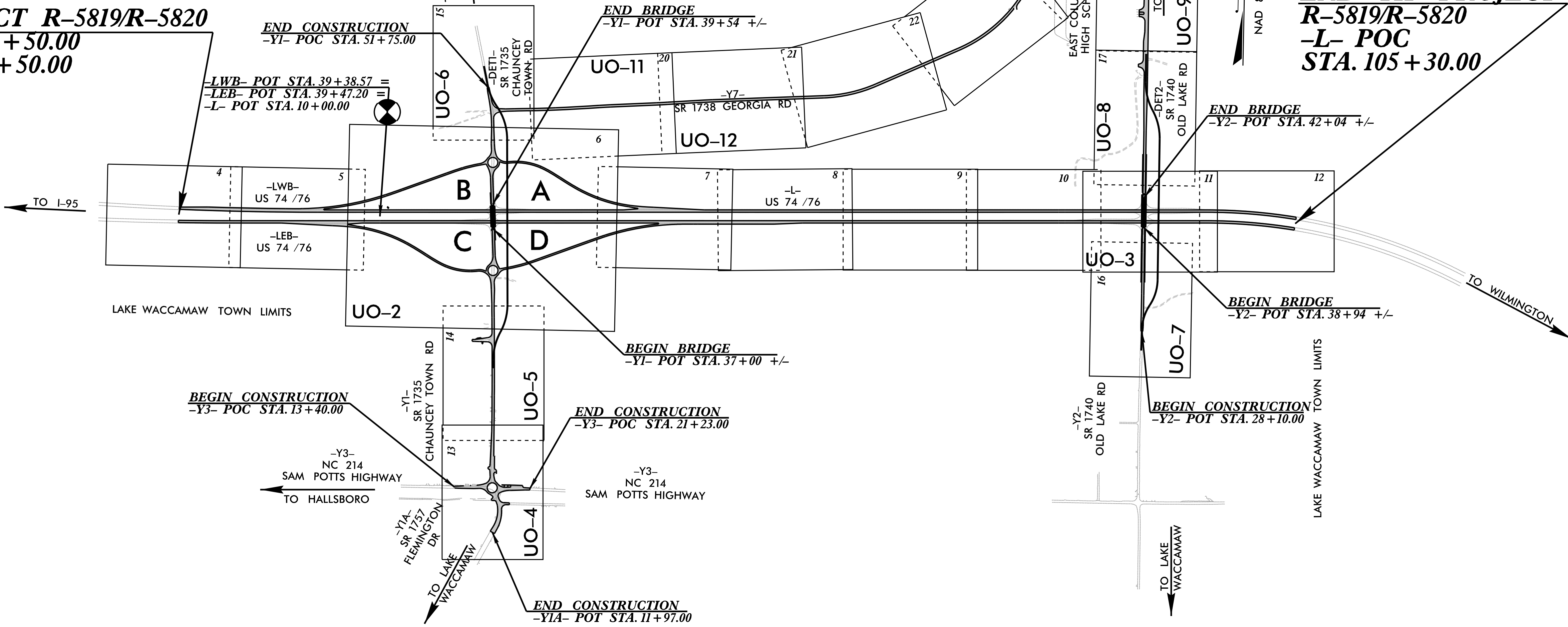
**UTILITIES BY OTHERS PLANS
COLUMBUS COUNTY**

LOCATION: SR 1740 (OLD LAKE ROAD) CONVERT AT-GRADE INTERSECTION TO GRADE SEPARATION (R-5819) SR 1735 (CHAUNCEY TOWN ROAD) CONVERT AT-GRADE INTERSECTION TO INTERCHANGE (R-5820)

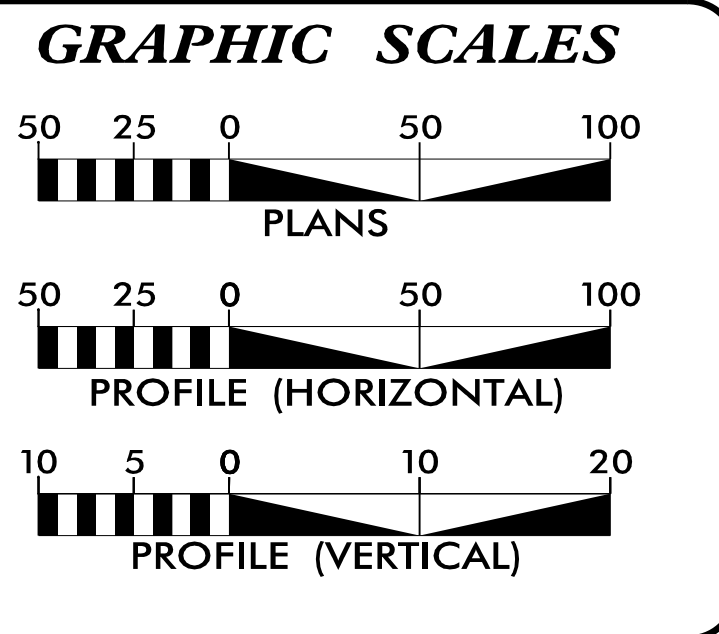
TYPE OF WORK: RELOCATION OF POWER AND COMMUNICATION

NOTE:
ALL UTILITY WORK SHOWN ON THIS SHEET WILL BE DONE BY OTHERS. NO PAYMENT WILL BE MADE TO THE CONTRACTOR FOR UTILITY WORK SHOWN ON THIS SHEET.

BEGIN TIP PROJECT R-5819/R-5820
-LWB- POC STA. 18+50.00
-LEB- POC STA. 18+50.00



END TIP PROJECT R-5819/R-5820
-L- POC STA. 105+30.00



INDEX OF SHEETS

| SHEET NO.: | DESCRIPTION: |
|-----------------|-----------------|
| UO-1 | TITLE SHEET |
| UO-2 THRU UO-14 | UBO PLAN SHEETS |

UTILITY OWNERS WITH CONFLICTS

- (A) POWER - DUKE ENERGY DISTRIBUTION
- (B) POWER - DUKE ENERGY TRANSMISSION
- (C) COMMUNICATIONS - MCNC
- (D) COMMUNICATIONS - CENTURYLINK
- (E) COMMUNICATIONS - SPECTRUM

PREPARED IN THE OFFICE OF:

SAM 2641 Sumner Boulevard
Suite 116
Raleigh, NC 27616
(919) 878-7466

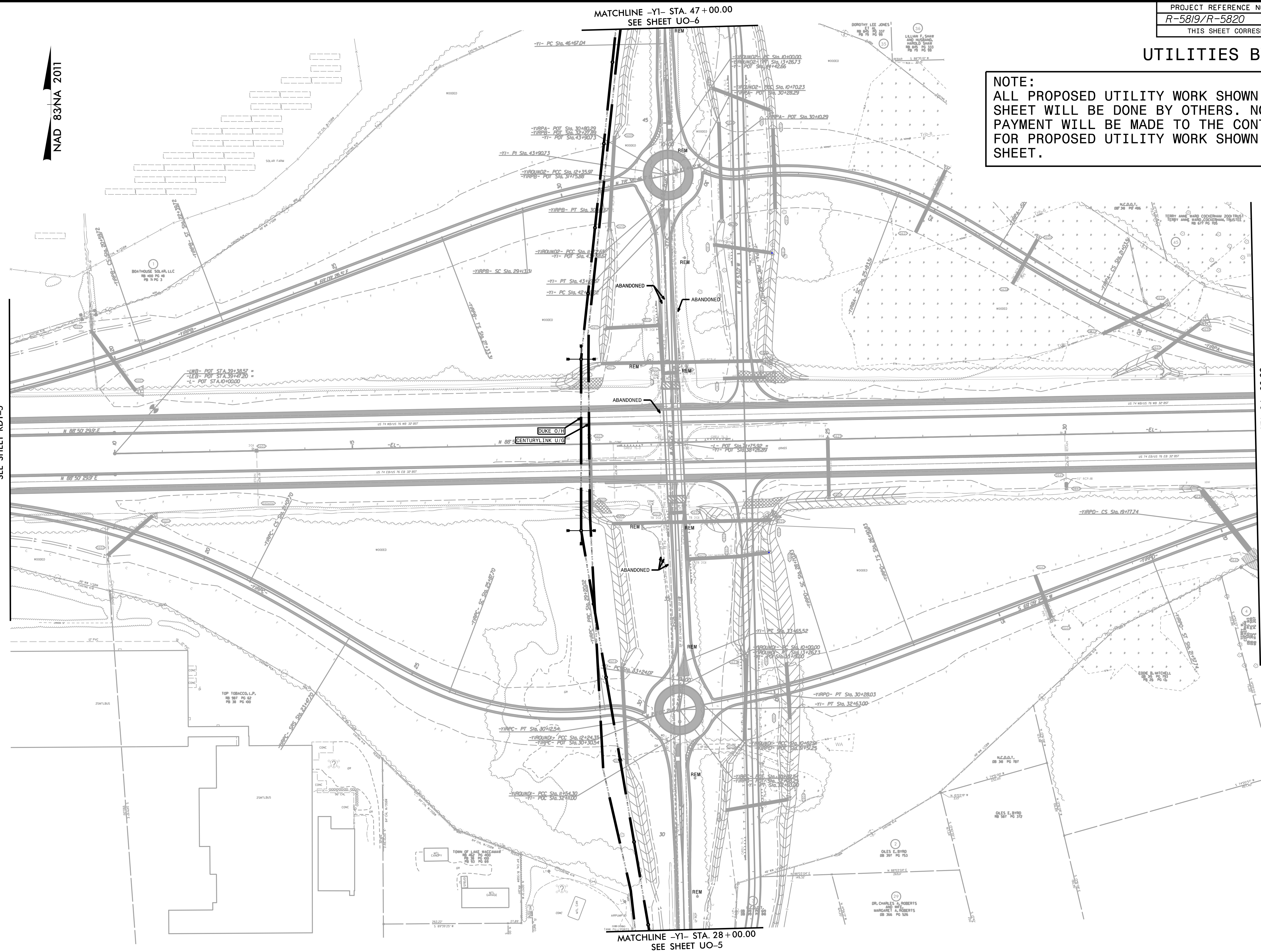
WEBB WHITE UTILITY PROJECT MANAGER
PATRICK JONES PROJECT UTILITY COORDINATOR

**DIVISION OF HIGHWAYS
UTILITIES UNIT**
1555 MAIL SERVICES CENTER
RALEIGH, NC 27699-1555
PHONE (919) 707-6690
FAX (919) 250-4151

RICK HANDLIN UTILITIES ENGINEER
RICK BOUNDS UTILITIES COORDINATOR

UTILITIES BY OTHERS

NOTE:
 ALL PROPOSED UTILITY WORK SHOWN ON THIS SHEET WILL BE DONE BY OTHERS. NO PAYMENT WILL BE MADE TO THE CONTRACTOR FOR PROPOSED UTILITY WORK SHOWN ON THIS SHEET.



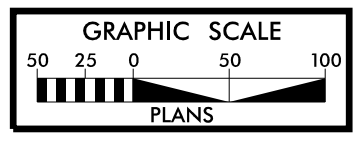
MATCHLINE -LWB- STA. 37+00.00
 SEE SHEET RDY-5

MATCHLINE -L- STA. 34+00.00
 SEE SHEET RDY-7

8/17/99

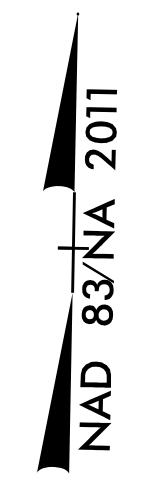
NAD 83NA 2011

3/8/2025 R5819_R5820_rdy6_U002.dgn
 2:04:02 PM



UTILITIES BY OTHERS

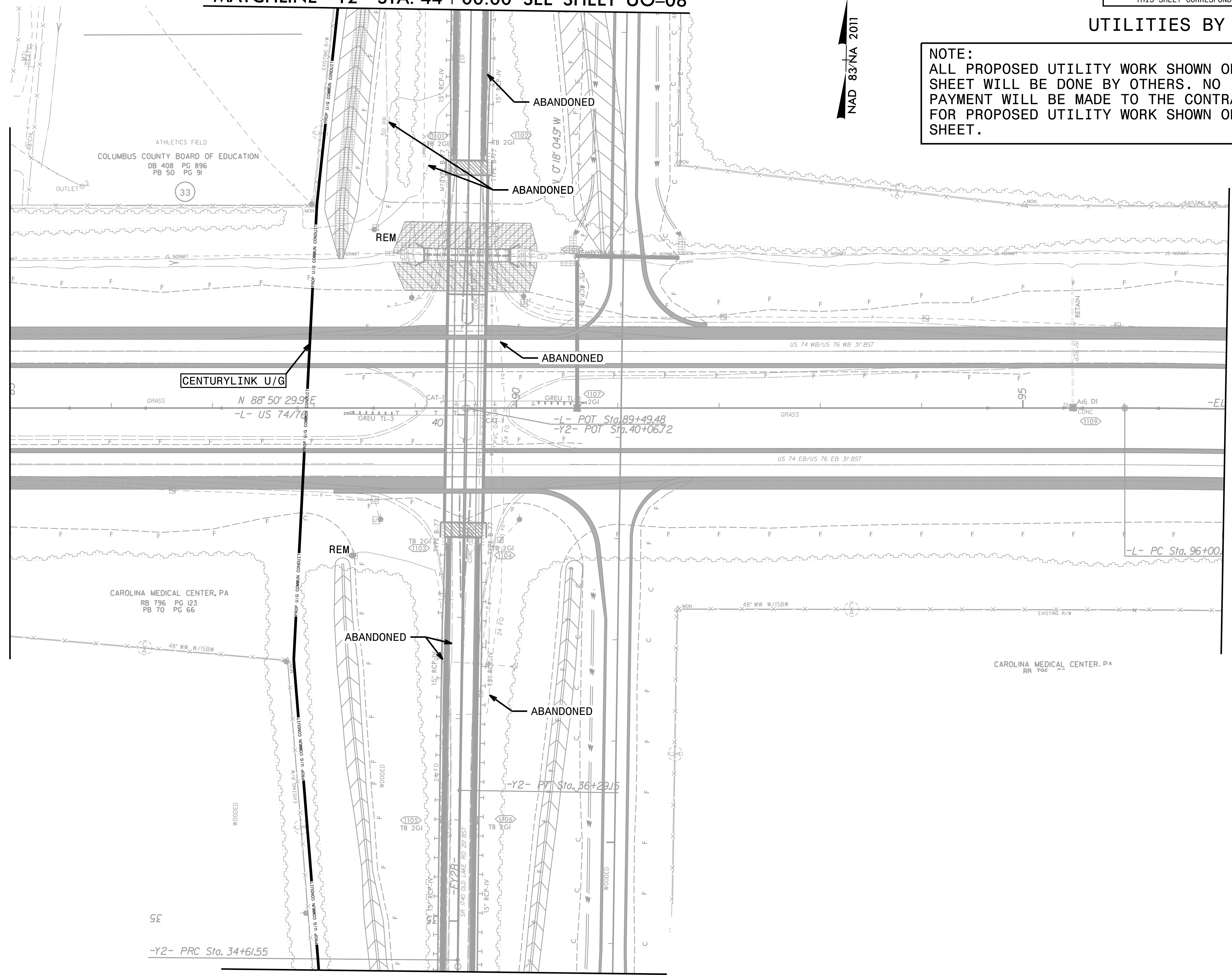
NOTE:
ALL PROPOSED UTILITY WORK SHOWN ON THIS SHEET WILL BE DONE BY OTHERS. NO PAYMENT WILL BE MADE TO THE CONTRACTOR FOR PROPOSED UTILITY WORK SHOWN ON THIS SHEET.



MATCHLINE -Y2- STA. 44 + 00.00 SEE SHEET UO-08

MATCHLINE -L- STA. 85 + 00.00
SEE SHEET RDY-10

MATCHLINE -L- STA. 97 + 00.00
SEE SHEET RDY-12



MATCHLINE -Y2- STA. 34 + 50.00
SEE SHEET UO-7

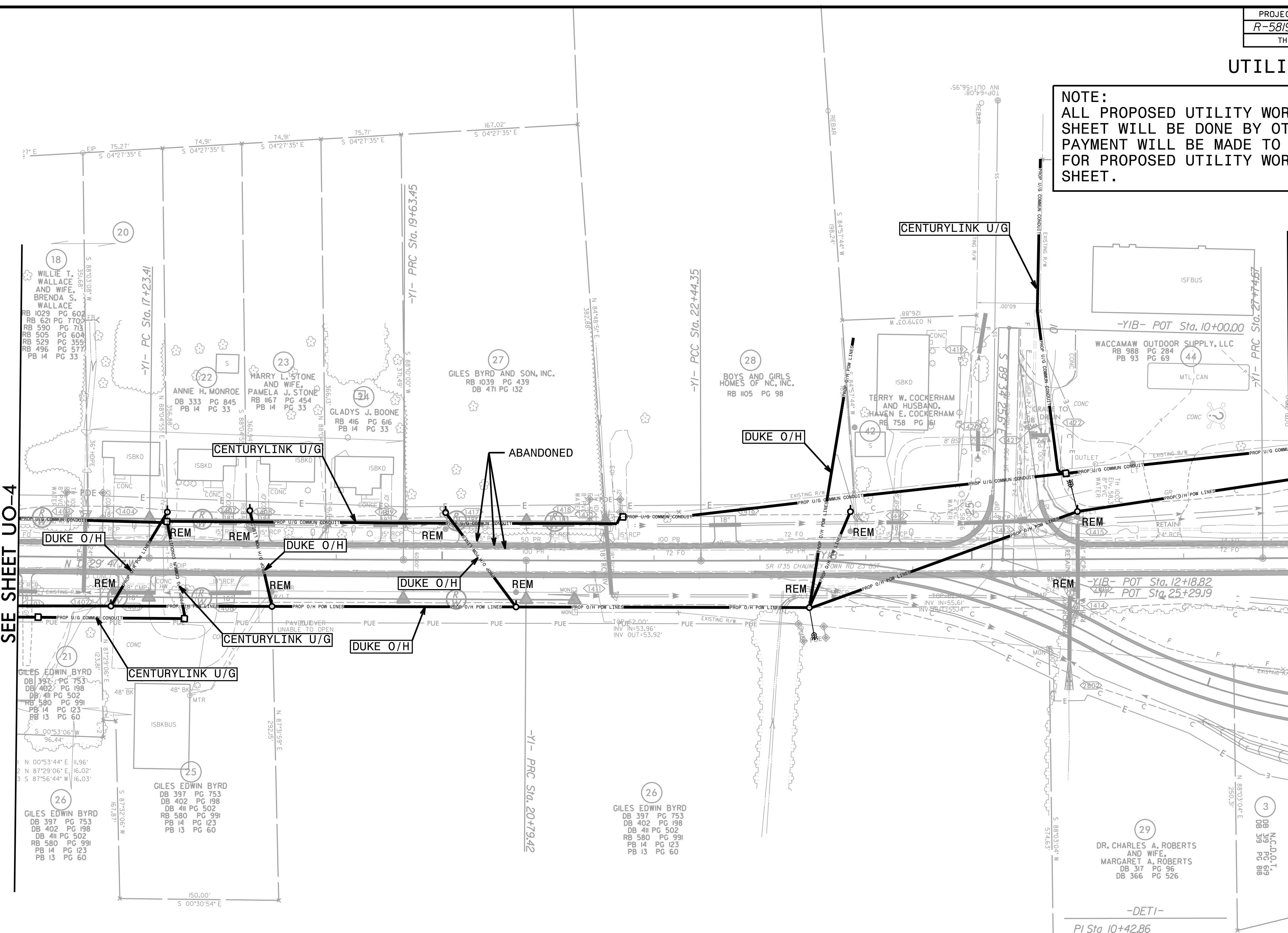
UTILITIES BY OTHERS

NOTE:
 ALL PROPOSED UTILITY WORK SHOWN ON THIS SHEET WILL BE DONE BY OTHERS. NO PAYMENT WILL BE MADE TO THE CONTRACTOR FOR PROPOSED UTILITY WORK SHOWN ON THIS SHEET.



MATCHLINE -Y1- STA. 16 + 00.00
SEE SHEET UO-4

MATCHLINE -Y1- STA. 28 + 00.00
SEE SHEET UO-2



-DETI-

| | |
|--|--|
| $PI\ Sta\ 10+42.86$ $\Delta = 0^{\circ} 02' 06.4" (LT)$ $D = 0^{\circ} 02' 27.4"$ $L = 85.73'$ $T = 42.86'$ $R = 139.929J8'$ $SE = NC$ | $PI\ Sta\ 15+43.36$ $\Delta = 28^{\circ} 53' 06.7" (LT)$ $D = 9^{\circ} 32' 57.5"$ $L = 303.10'$ $T = 154.86'$ $R = 600.00'$ $SE = 03$ |
|--|--|

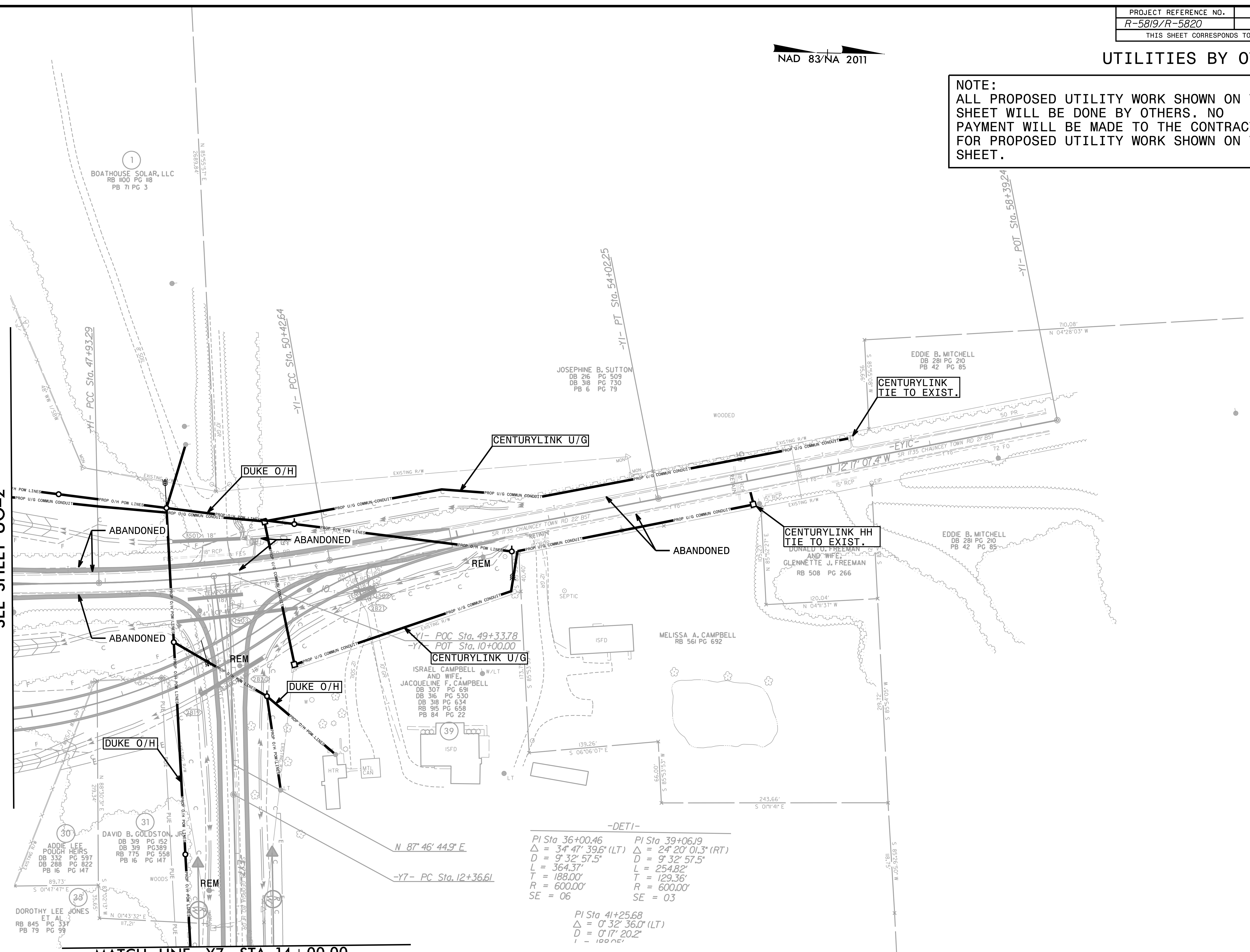
NAD 83/NA 2011

UTILITIES BY OTHERS

NOTE:
 ALL PROPOSED UTILITY WORK SHOWN ON THIS SHEET WILL BE DONE BY OTHERS. NO PAYMENT WILL BE MADE TO THE CONTRACTOR FOR PROPOSED UTILITY WORK SHOWN ON THIS SHEET.

MATCHLINE -Y1- STA. 47 + 00.00
 SEE SHEET UO-2

MATCH LINE -Y7- STA 14 + 00.00
 SEE SHEET UO-11

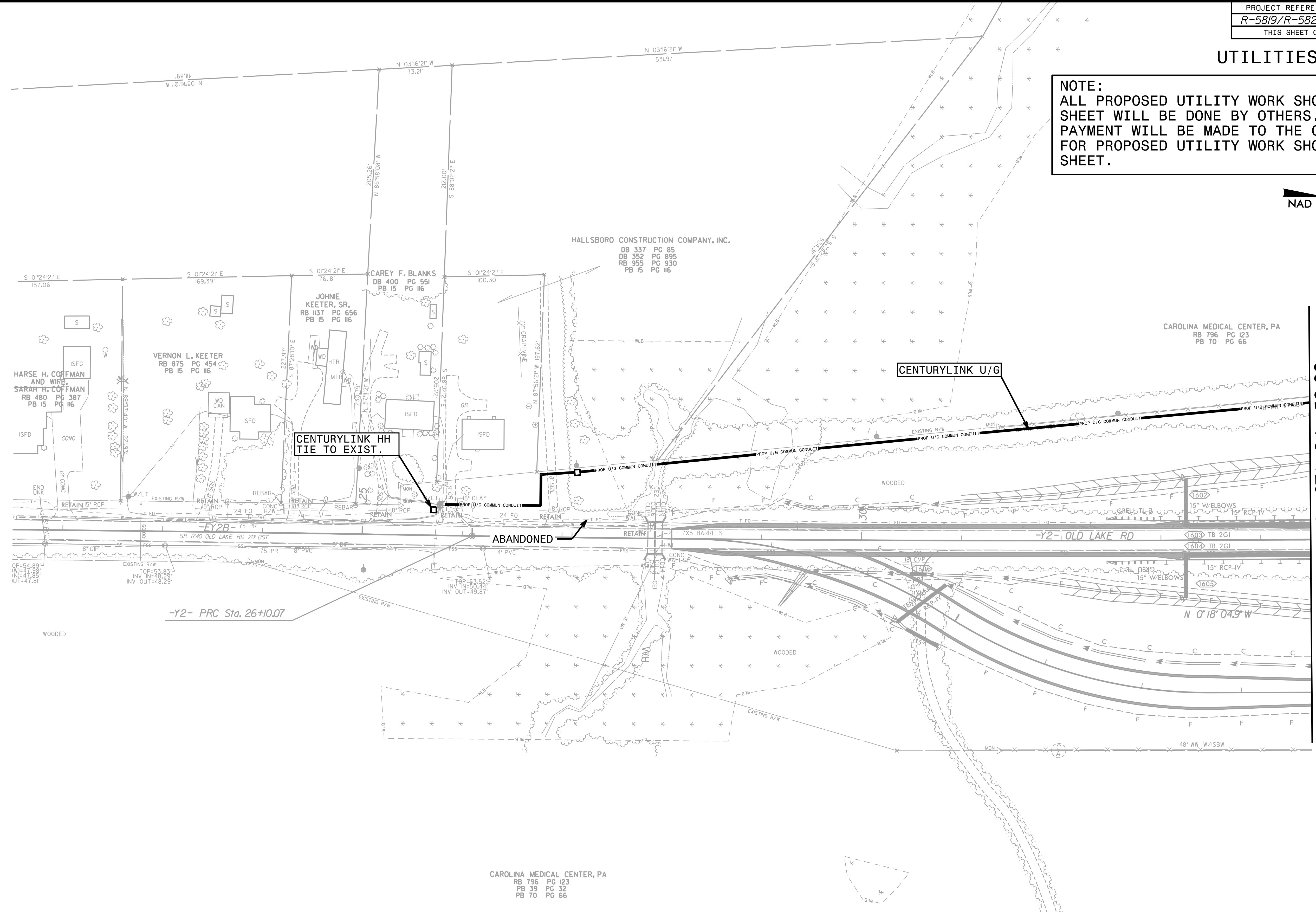
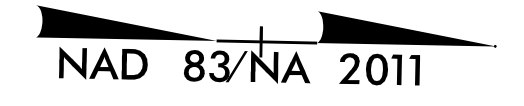


8/17/99

3/8/2015 R5820.rdj.15_UO06.dgn
 2:04:30 PM

UTILITIES BY OTHERS

NOTE:
ALL PROPOSED UTILITY WORK SHOWN ON THIS SHEET WILL BE DONE BY OTHERS. NO PAYMENT WILL BE MADE TO THE CONTRACTOR FOR PROPOSED UTILITY WORK SHOWN ON THIS SHEET.

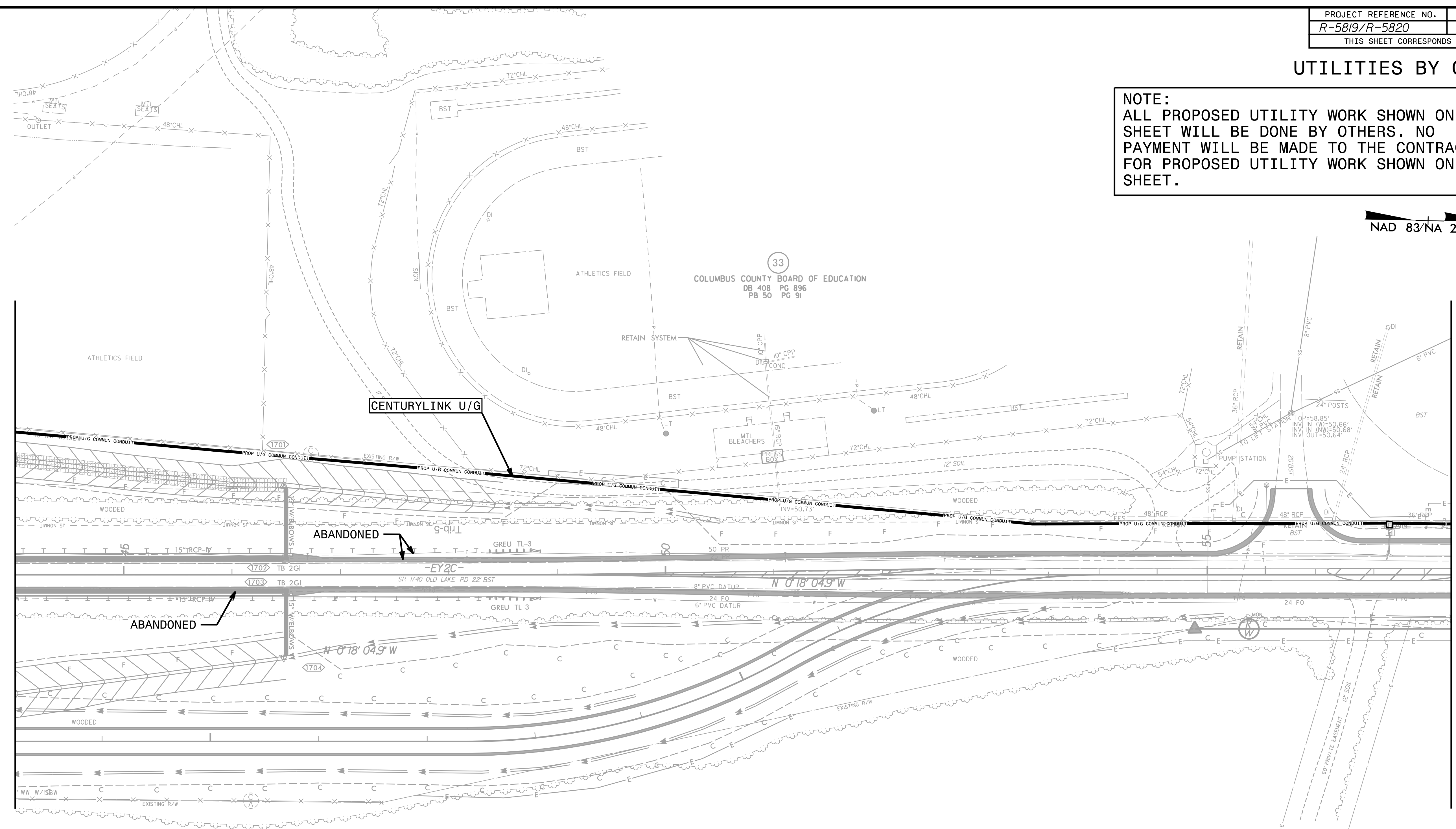


MATCHLINE -Y2- STA. 34 + 50.00
SEE SHEET UO-3

| CULVERT #2 TWO BARRELS | | | -DET2- | | |
|---------------------------|-----------|------------|-------------------------------|--------------------------------|--------------------------------|
| | NORTH | EAST | PI Sta 11+08.88 | PI Sta 13+57.48 | PI Sta 16+32.86 |
| CUL1 | 210311.01 | 2151016.57 | $\Delta = 0' 22' 50.1''$ (LT) | $\Delta = 32' 08' 21.9''$ (RT) | $\Delta = 32' 51' 46.3''$ (LT) |
| CUL2 | 210317.55 | 2151016.81 | $DEL = 0' 10' 29.2''$ | $D = 11' 48' 48.8''$ | $D = 11' 48' 48.8''$ |
| CUL3 | 210318.36 | 2151016.81 | $L = 217.76'$ | $L = 272.06'$ | $L = 278.18'$ |
| CUL4 | 210325.35 | 2151017.04 | $T = 108.88'$ | $T = 139.71'$ | $T = 143.03'$ |
| CE1 | | | $R = 46' 32.783.83'$ | $R = 485.00'$ | $R = 485.00'$ |
| HW1 | | | $SE = 03$ | | $SE = 06$ |
| CUL5 | 210311.44 | 2150982.33 | | | |

UTILITIES BY OTHERS

NOTE:
 ALL PROPOSED UTILITY WORK SHOWN ON THIS SHEET WILL BE DONE BY OTHERS. NO PAYMENT WILL BE MADE TO THE CONTRACTOR FOR PROPOSED UTILITY WORK SHOWN ON THIS SHEET.



MATCHLINE -Y2- STA. 44 + 00.00
SEE SHEET UO-3

MATCHLINE -Y2- STA. 57 + 25.00
SEE SHEET UO-9

CULVERT #1
TWO BARRELS

| RTH | EAST | ELEV. |
|--------|------------|-------|
| 688.45 | 2150950.87 | 49.49 |
| 683.28 | 2150950.54 | 49.49 |
| 682.01 | 2150950.79 | 49.48 |
| 676.99 | 2150950.96 | 49.52 |
| | | 55.41 |
| | | 57.50 |
| 577.26 | 2151037.40 | 49.47 |
| 582.56 | 2151037.55 | 49.39 |
| 583.62 | 2151037.29 | 49.39 |
| 589.26 | 2151037.28 | 49.38 |
| | | 55.39 |
| | | 57.44 |

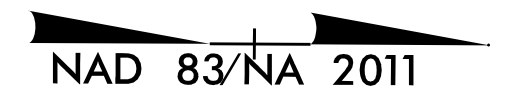
-DET2-

| | |
|---------------------------------------|---------------------------------------|
| PI Sta 33+93.95 | PI Sta 37+01.14 |
| $\Delta = 29^{\circ} 20' 05.3''$ (LT) | $\Delta = 29^{\circ} 20' 05.3''$ (RT) |
| $D = 9^{\circ} 32' 57.5''$ | $D = 9^{\circ} 32' 57.5''$ |
| $L = 307.19'$ | $L = 307.19'$ |
| $T = 157.04'$ | $T = 157.04'$ |
| $R = 600.00'$ | $R = 600.00'$ |
| $SE = 06$ | $SE = 03$ |

32
 RMS TIMBERLANDS, LLC
 RB 885 PG 514
 PB 72 PG 43

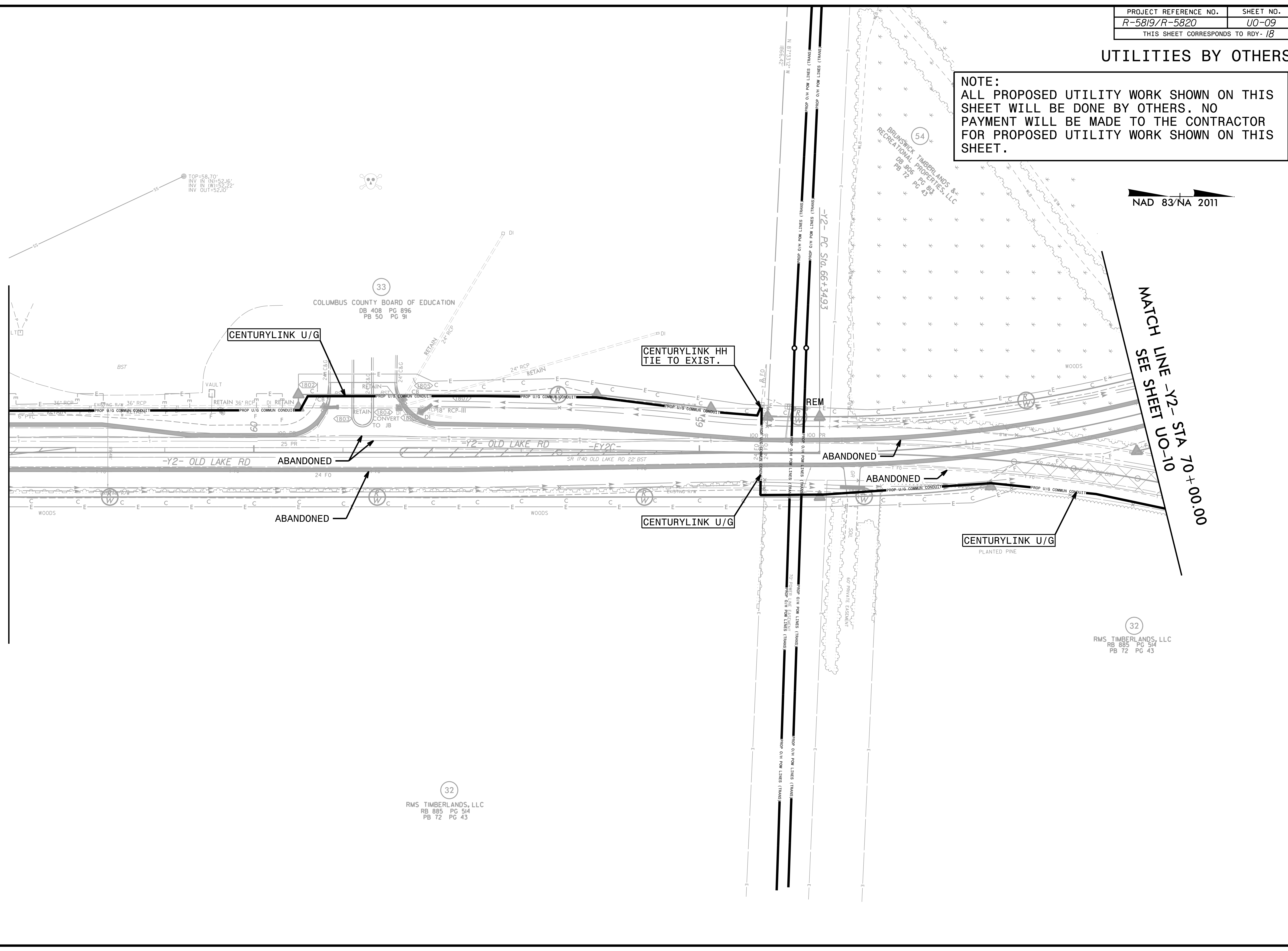
UTILITIES BY OTHERS

NOTE:
 ALL PROPOSED UTILITY WORK SHOWN ON THIS SHEET WILL BE DONE BY OTHERS. NO PAYMENT WILL BE MADE TO THE CONTRACTOR FOR PROPOSED UTILITY WORK SHOWN ON THIS SHEET.



MATCH LINE -Y2- STA 57 + 25.00
SEE SHEET UO-8

MATCH LINE -Y2- STA 70 + 00.00
SEE SHEET UO-10



33
 COLUMBUS COUNTY BOARD OF EDUCATION
 DB 408 PG 896
 PB 50 PG 91

54
 BRUNSWICK TIMBERLANDS &
 RECREATIONAL PROPERTIES, LLC
 DB 806 PG 913
 PB 72 PG 43

32
 RMS TIMBERLANDS, LLC
 RB 885 PG 514
 PB 72 PG 43

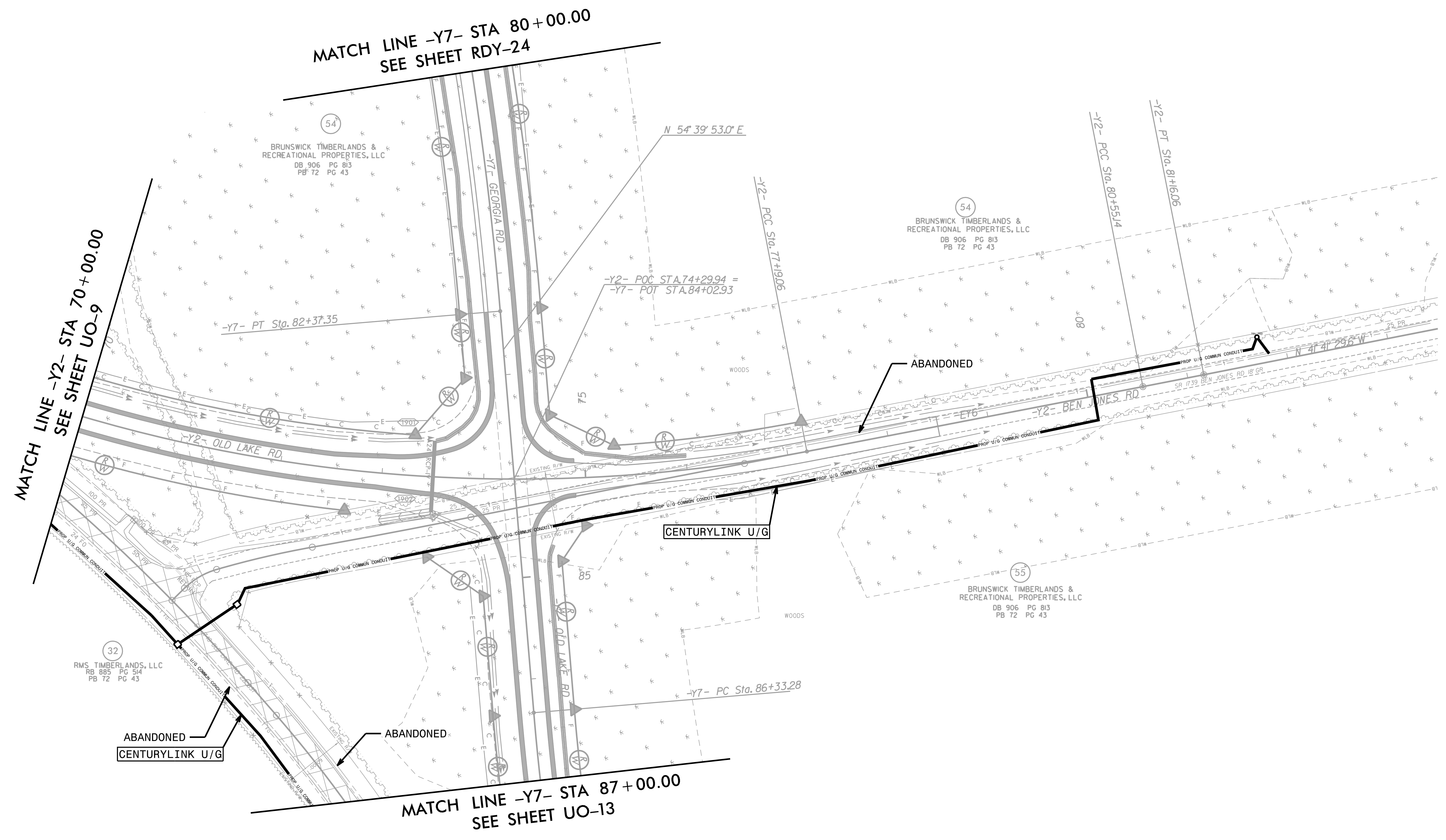
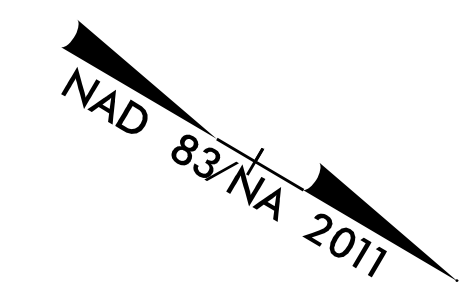
32
 RMS TIMBERLANDS, LLC
 RB 885 PG 514
 PB 72 PG 43

8/17/99

3/8/2025 R5820.rdy18_UO09.dgn
 2:04:28 PM

UTILITIES BY OTHERS

NOTE:
 ALL PROPOSED UTILITY WORK SHOWN ON THIS SHEET WILL BE DONE BY OTHERS. NO PAYMENT WILL BE MADE TO THE CONTRACTOR FOR PROPOSED UTILITY WORK SHOWN ON THIS SHEET.



UTILITIES BY OTHERS

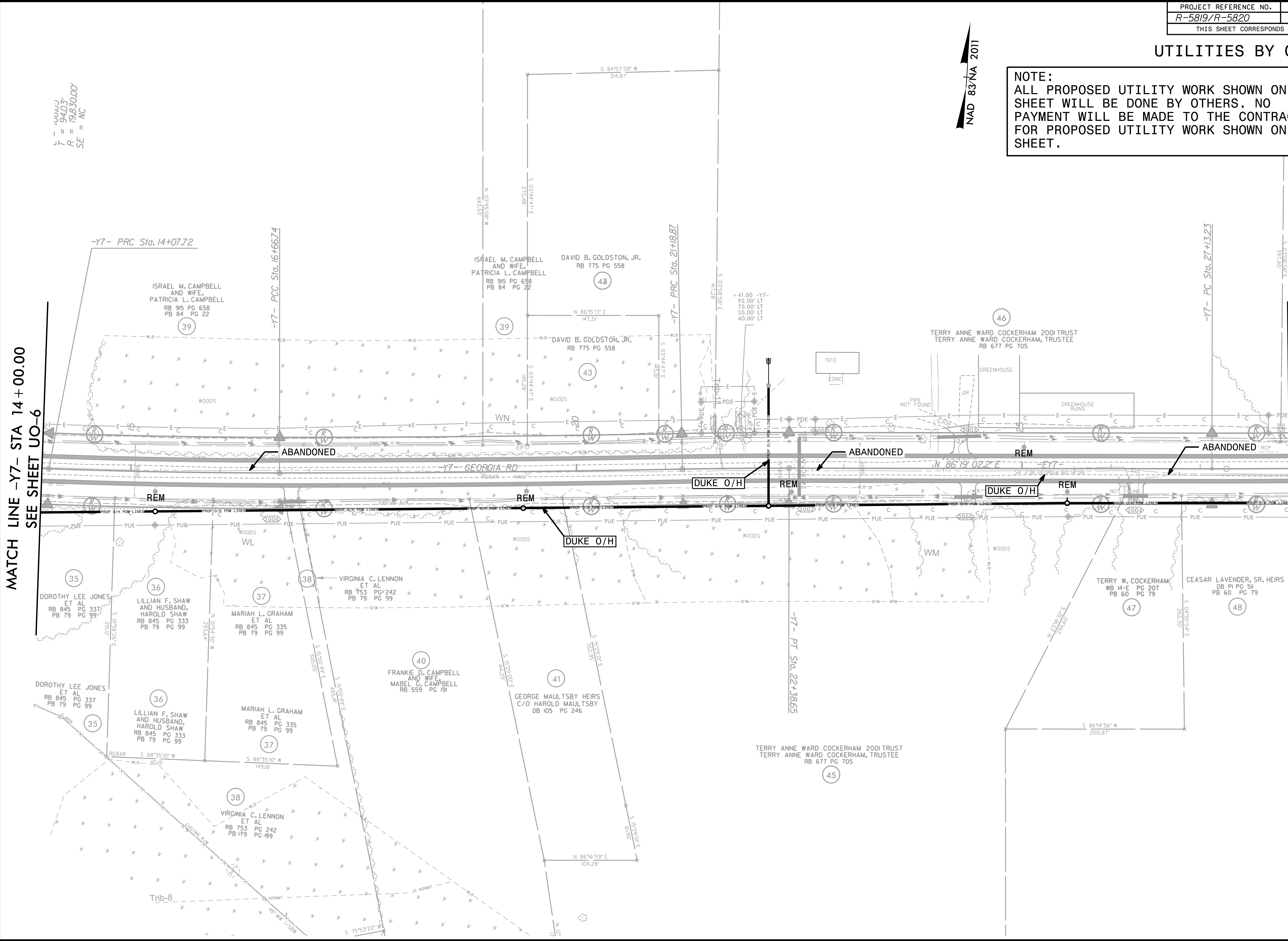
NOTE:
 ALL PROPOSED UTILITY WORK SHOWN ON THIS SHEET WILL BE DONE BY OTHERS. NO PAYMENT WILL BE MADE TO THE CONTRACTOR FOR PROPOSED UTILITY WORK SHOWN ON THIS SHEET.



$\frac{1}{7} = \frac{100000}{94037}$
 $R = 19,830.00'$
 $SE = NC$

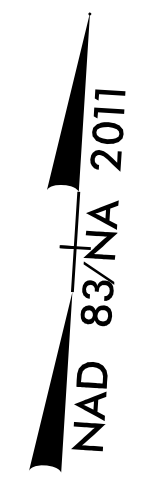
8/17/99

3/8/2025 R5820.rdy20.U011.dgn



UTILITIES BY OTHERS

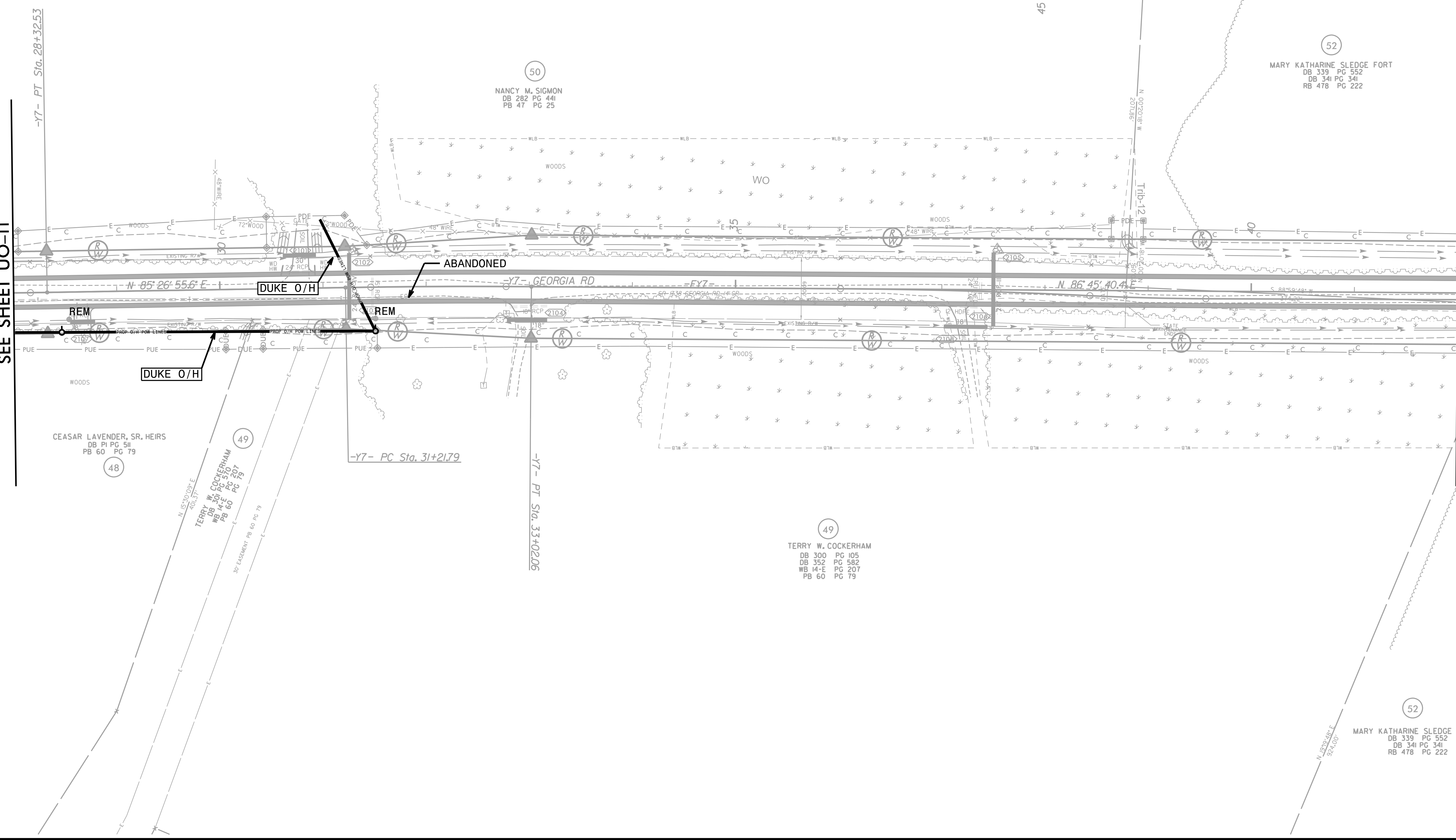
NOTE:
 ALL PROPOSED UTILITY WORK SHOWN ON THIS SHEET WILL BE DONE BY OTHERS. NO PAYMENT WILL BE MADE TO THE CONTRACTOR FOR PROPOSED UTILITY WORK SHOWN ON THIS SHEET.



N 85°58'08"E
262.16'

MATCH LINE -Y7- STA 28+00.00
SEE SHEET UO-11

MATCH LINE -Y7- STA 42+00.00
SEE SHEET RDY-22



50
 NANCY M. SIGMON
 DB 282 PG 441
 PB 47 PG 25

52
 MARY KATHARINE SLEDGE FORT
 DB 339 PG 552
 DB 341 PG 341
 RB 478 PG 222

48
 CEASAR LAVENDER, SR. HEIRS
 DB PI PG 511
 PB 60 PG 79

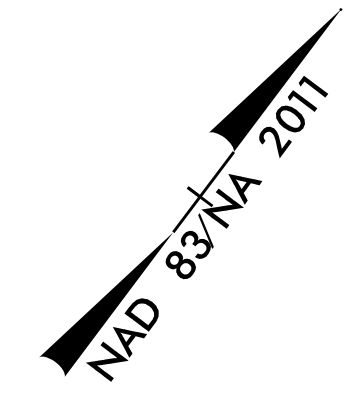
49
 TERRY W. COCKERHAM
 DB 140 PG 570
 WB 14-E PG 207
 PB 60 PG 79

49
 TERRY W. COCKERHAM
 DB 300 PG 105
 DB 352 PG 582
 WB 14-E PG 207
 PB 60 PG 79

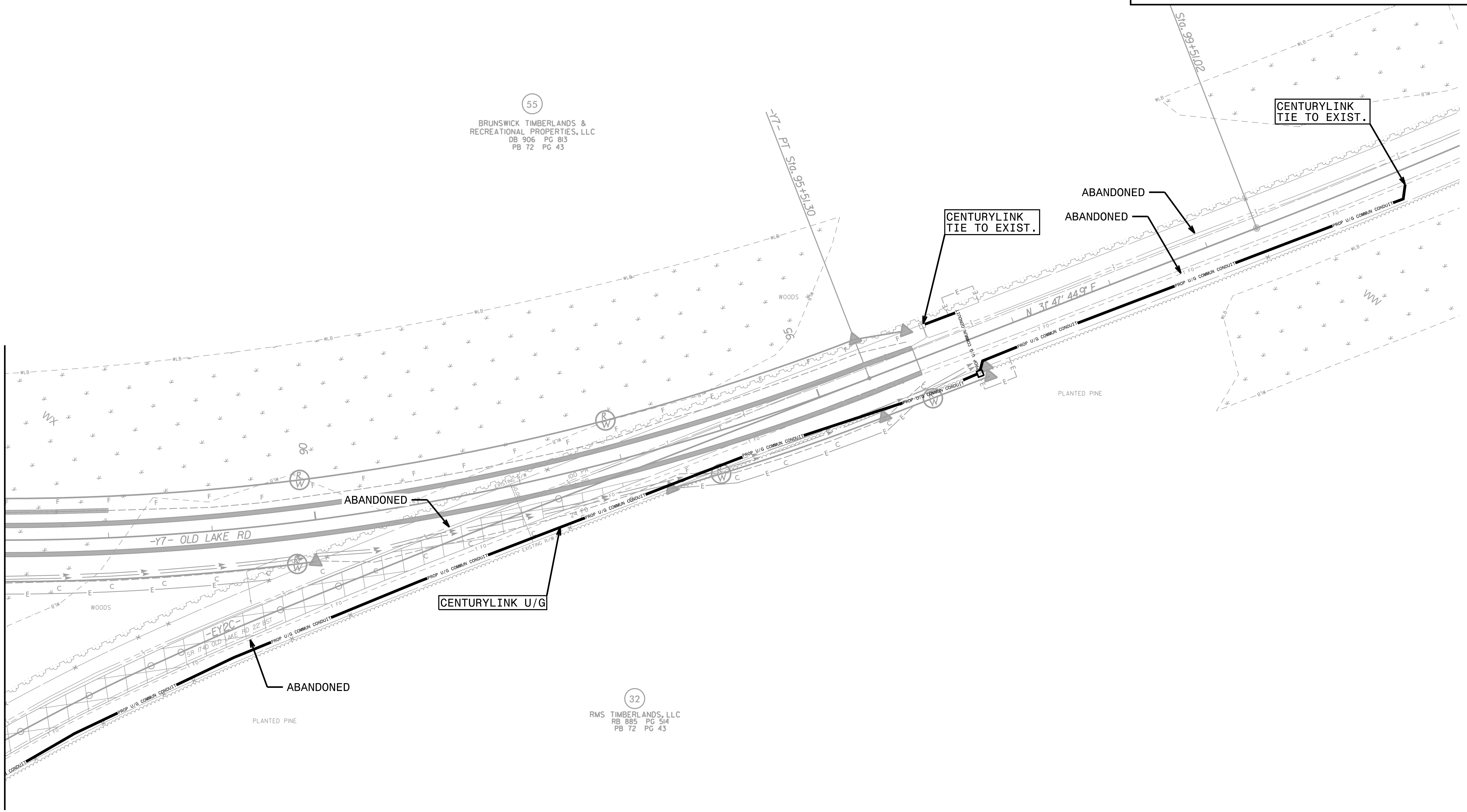
52
 MARY KATHARINE SLEDGE FORT
 DB 339 PG 552
 DB 341 PG 341
 RB 478 PG 222

UTILITIES BY OTHERS

NOTE:
 ALL PROPOSED UTILITY WORK SHOWN ON THIS SHEET WILL BE DONE BY OTHERS. NO PAYMENT WILL BE MADE TO THE CONTRACTOR FOR PROPOSED UTILITY WORK SHOWN ON THIS SHEET.



MATCH LINE -Y7- STA 87+00.00
 SEE SHEET UO-10

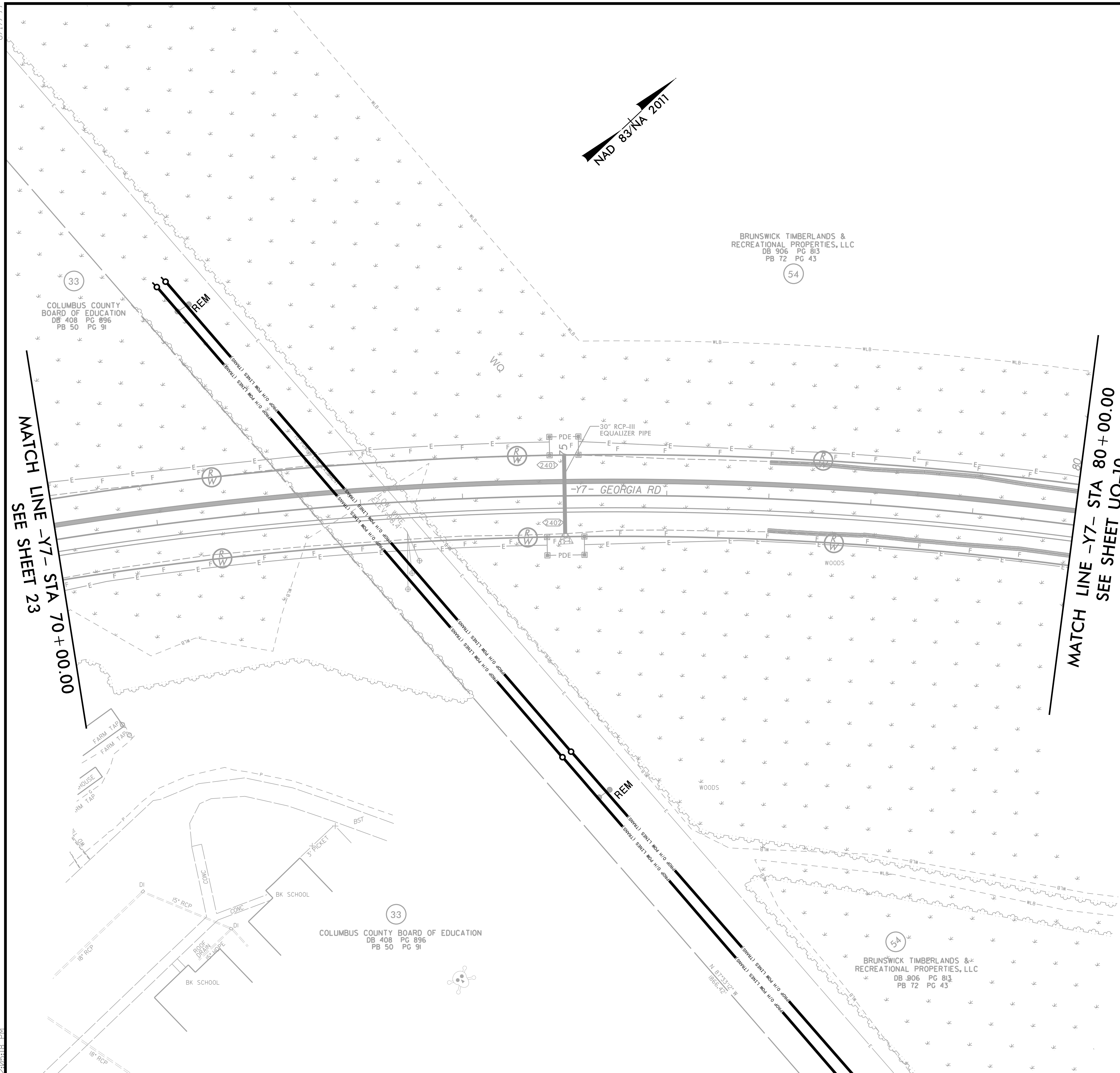


55
 BRUNSWICK TIMBERLANDS &
 RECREATIONAL PROPERTIES, LLC
 DB 906 PG 813
 PB 72 PG 43

32
 RMS TIMBERLANDS, LLC
 RB 885 PG 514
 PB 72 PG 43

NOTE:
 ALL PROPOSED UTILITY WORK SHOWN ON THIS SHEET WILL BE DONE BY OTHERS. NO PAYMENT WILL BE MADE TO THE CONTRACTOR FOR PROPOSED UTILITY WORK SHOWN ON THIS SHEET.

3/18/2022 3:45:31 PM R5820.RDY_PSH24_U014.dgn
 2:05:18 PM



MATCH LINE -Y7- STA 70+00.00
 SEE SHEET 23

MATCH LINE -Y7- STA 80+00.00
 SEE SHEET UO-10

33
 COLUMBUS COUNTY BOARD OF EDUCATION
 DB 408 PG 896
 PB 50 PG 91

BRUNSWICK TIMBERLANDS &
 RECREATIONAL PROPERTIES, LLC
 DB 906 PG 813
 PB 72 PG 43

33
 COLUMBUS COUNTY BOARD OF EDUCATION
 DB 408 PG 896
 PB 50 PG 91

54
 BRUNSWICK TIMBERLANDS &
 RECREATIONAL PROPERTIES, LLC
 DB 906 PG 813
 PB 72 PG 43