

PLAN @ END BENT 1 PLAN @ END BENT 2
DIMENSIONS SHOWN ARE TYPICAL FOR BOTH APPROACH SLABS

NOTES

APPROACH SLAB SHALL NOT BE CONSTRUCTED PRIOR TO COMPLETION OF THE BRIDGE DECK.

FOR BRIDGE APPROACH FILL INCLUDING GEOTEXTILE, 6" Ø DRAINAGE PIPE, AND SELECT MATERIAL, SEE ROADWAY PLANS.

GEOTEXTILE SHALL BE TYPE 1 IN ACCORDANCE WITH THE STANDARD SPECIFICATIONS SECTION 1056.

SELECT MATERIAL BACKFILL (CLASS V OR CLASS VI) SHALL BE IN ACCORDANCE WITH STANDARD SPECIFICATIONS SECTION 1016.

SELECT MATERIAL BACKFILL IS TO BE CONTINUOUS ALONG FILL FACE OF BACKWALL FROM OUTSIDE EDGE TO OUTSIDE EDGE OF APPROACH SLAB.

FOR THE 6" Ø DRAINAGE PIPE OUTLET(S), SEE ROADWAY STANDARD DRAWINGS.

AREA BETWEEN THE WINGWALL AND APPROACH SLAB SHALL BE GRADED TO DRAIN THE WATER AWAY FROM THE FILL FACE OF THE BRIDGE AND SHALL BE PAVED. SEE ROADWAY PLANS.

THE JOINT OPENING AT THE APPROACH SLAB/DECK INTERFACE SHALL BE SAWED NO MORE THAN 12 HOURS AFTER THE APPROACH SLAB IS CAST. THE JOINT SHALL BE CLEANED OF ALL DEBRIS BEFORE THE SEALANT IS APPLIED. THE JOINT SEALER MATERIAL SHALL CONFORM TO THE REQUIREMENTS OF SECTION 1028-3 OF THE STANDARD SPECIFICATIONS.

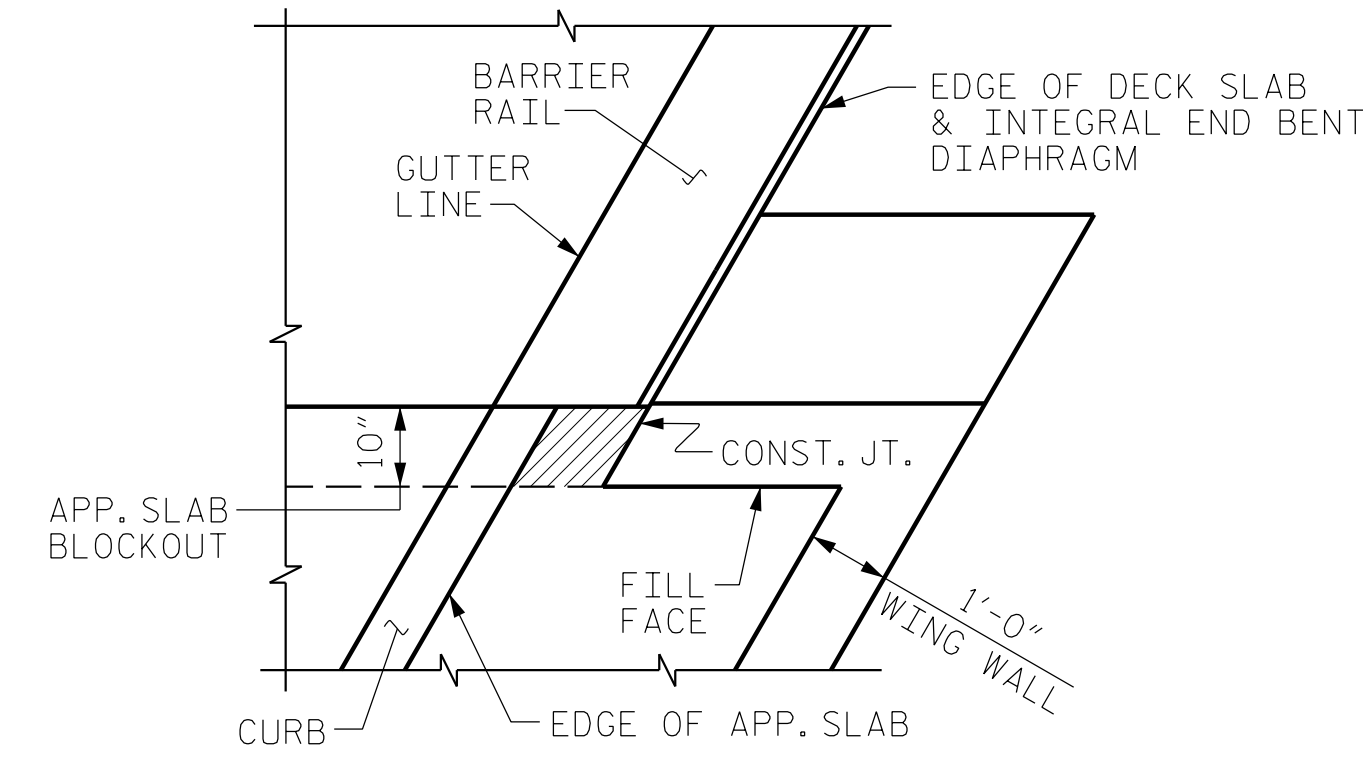
AT THE CONTRACTORS OPTION, "TYPE A - ALTERNATE APPROACH FILL" IN LIEU OF "TYPE I - STANDARD APPROACH FILL" MAY BE CONSTRUCTED AT NO ADDITIONAL COST TO THE DEPARTMENT. SEE SHEET 2 OF 2 FOR DETAILS AND NOTES.

BILL OF MATERIAL
FOR ONE APPROACH SLAB (2 REQ'D)

BAR	NO.	SIZE	TYPE	LENGTH	WEIGHT
* A1	16	#4	STR	37'-8"	403
A2	16	#4	STR	37'-8"	403
* B1	76	#5	STR	14'-3"	1130
B2	76	#6	STR	14'-8"	1674
REINFORCING STEEL				LBS.	2077
* EPOXY COATED REINFORCING STEEL				LBS.	1533
CLASS AA CONCRETE				C. Y.	24.6

SPLICE LENGTHS

BAR SIZE	EPOXY COATED	UNCOATED
#4	1'-11"	1'-7"
#5	2'-5"	2'-0"
#6	3'-7"	2'-5"

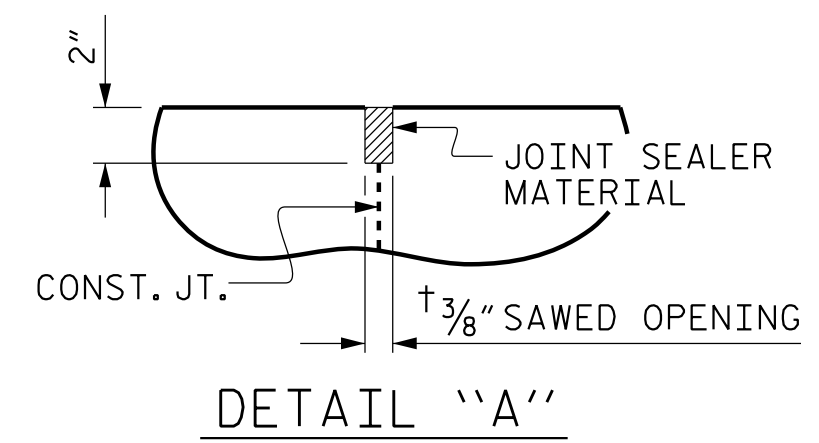


PLAN

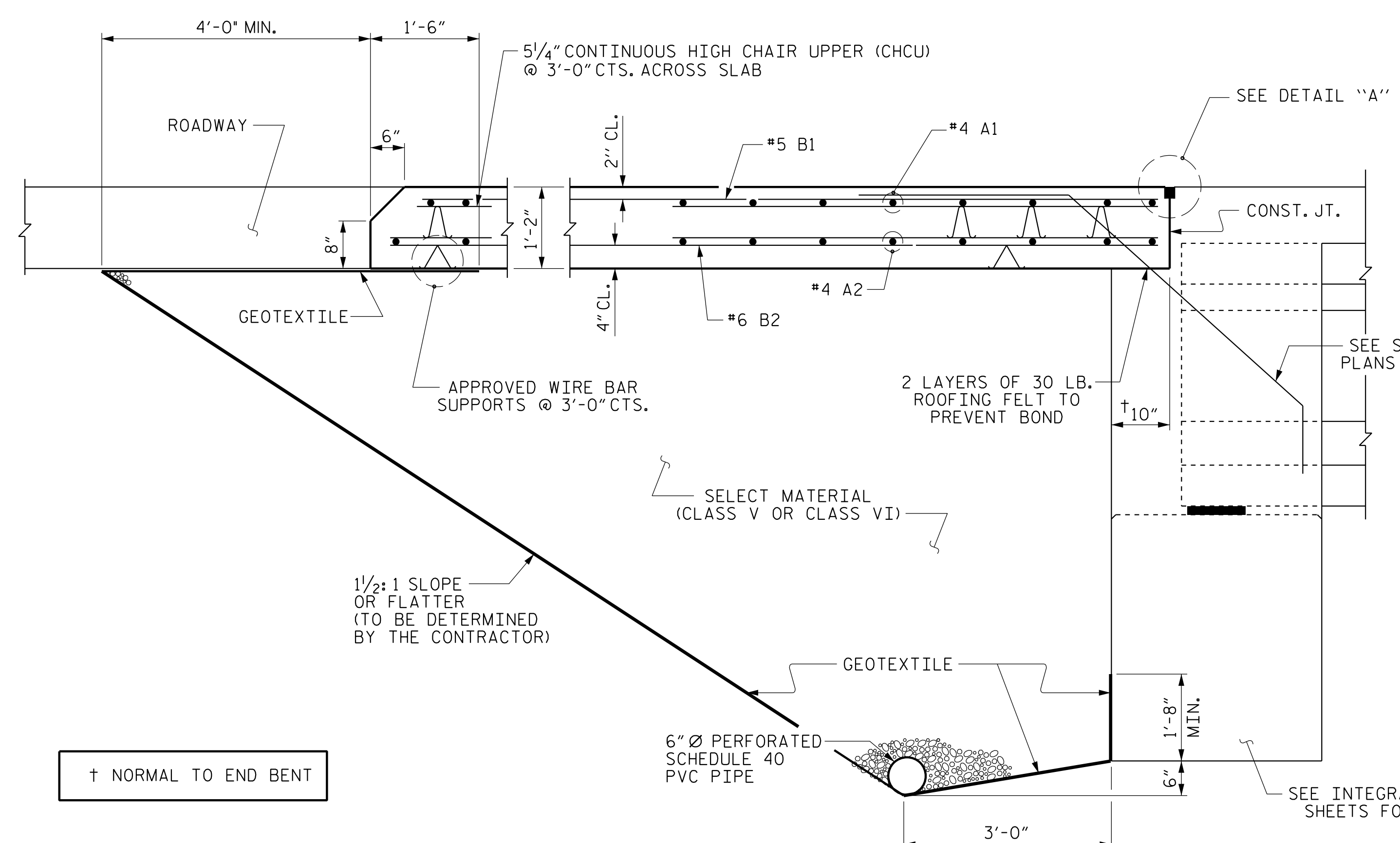
ELEVATION

THE CONCRETE IN THE SHADED AREA SHALL BE POURED ALONG WITH APPROACH SLAB CONSTRUCTION AND AFTER BARRIER RAIL HAS BEEN CAST IF SLIP FORMING IS USED.

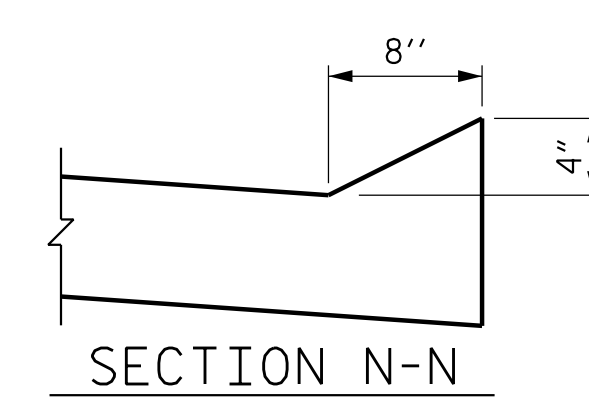
APPROACH SLAB BLOCKOUT
(WHEN APPROACH SLAB HAS CURB)



DETAIL "A"



SECTION THRU SLAB
(TYPE I - STANDARD APPROACH FILL)



SECTION N-N

PROJECT NO. **R-5819**
COLUMBUS COUNTY
STATION: **40+06.72 -Y2- POT**

SHEET 1 OF 2

STATE OF NORTH CAROLINA
DEPARTMENT OF TRANSPORTATION
RALEIGH

STANDARD
BRIDGE APPROACH SLAB
FOR INTEGRAL ABUTMENT
WITH FLEXIBLE PAVEMENT

REVISIONS

NO.	BY:	DATE:	NO.	BY:	DATE:
1			3		
2			4		

SHEET NO. **S1-37**
TOTAL SHEETS **38**

PLANS PREPARED BY:

NV5

NV5 ENGINEERS & CONSULTANTS, INC.
3300 REGENCY PARKWAY, SUITE 100
CARY, NC 27518
P: 919.851.1912 www.NV5.com
NC License # F-1333
Formerly C&T Engineers & Consultants

THIS STANDARD DRAWING REVIEWED & ADOPTED FOR USE AT THE REFERENCED LOCATION BY THE UNDERSIGNED:

Matthew David
Matthew David, PE
Professional Engineer
North Carolina License # 10000

4/12/2022

**DOCUMENT NOT CONSIDERED FINAL
UNLESS ALL SIGNATURES COMPLETED**

ASSEMBLED BY : **W. B. ALLEN** DATE : 6/21
CHECKED BY : **M. D. METZGER** DATE : 8/21

DRAWN BY : **TLA** 10/05 REV. 6/13 MAA/GM
CHECKED BY : **GM** 5/06 REV. 12/17 MAA/THC
REV. 06/19 BNB/THC

4/12/2022 10:25:29 AM C:\Projects\2016\20160321\CLIENT\Structures\R-5819 -Y2-YR5819_SML_ASI_230422.dgn