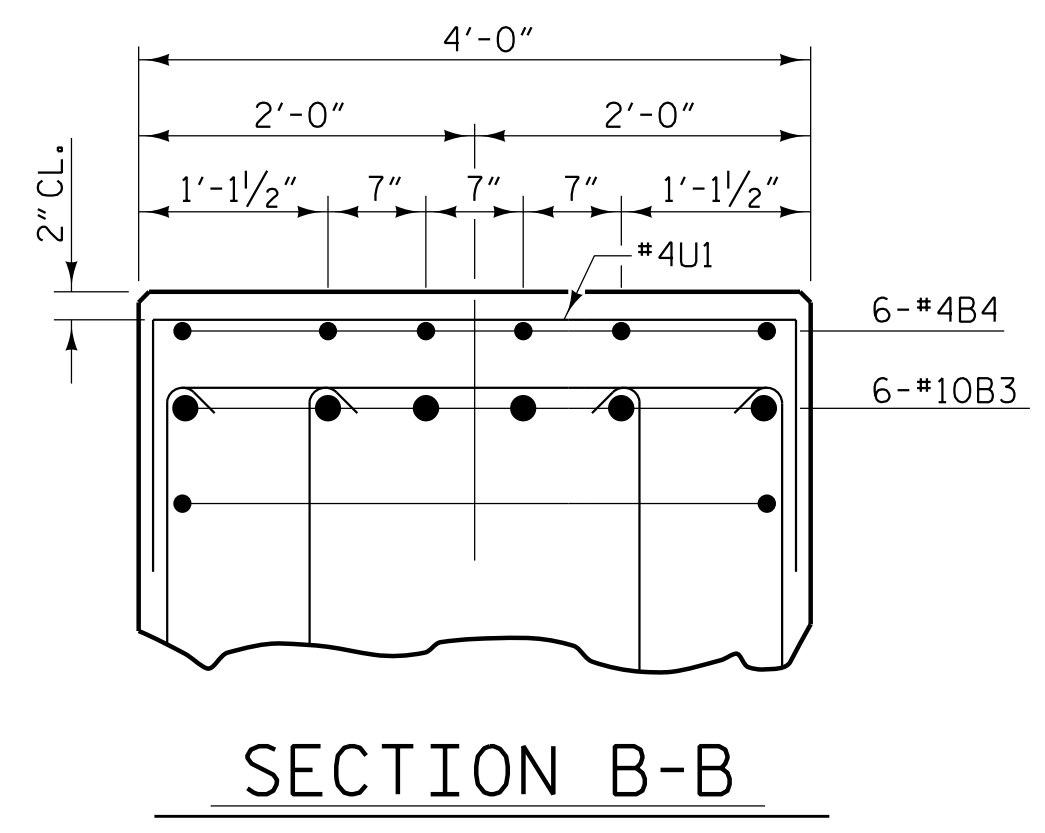
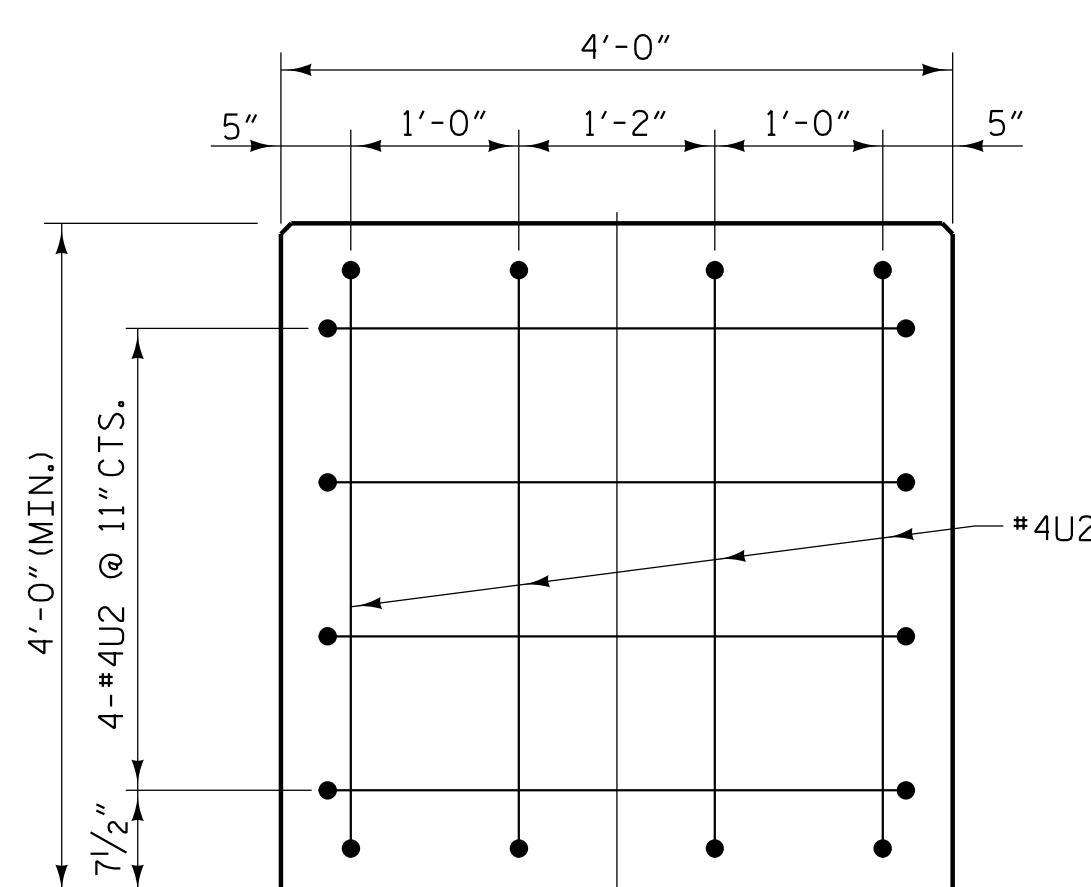


SECTION A-A

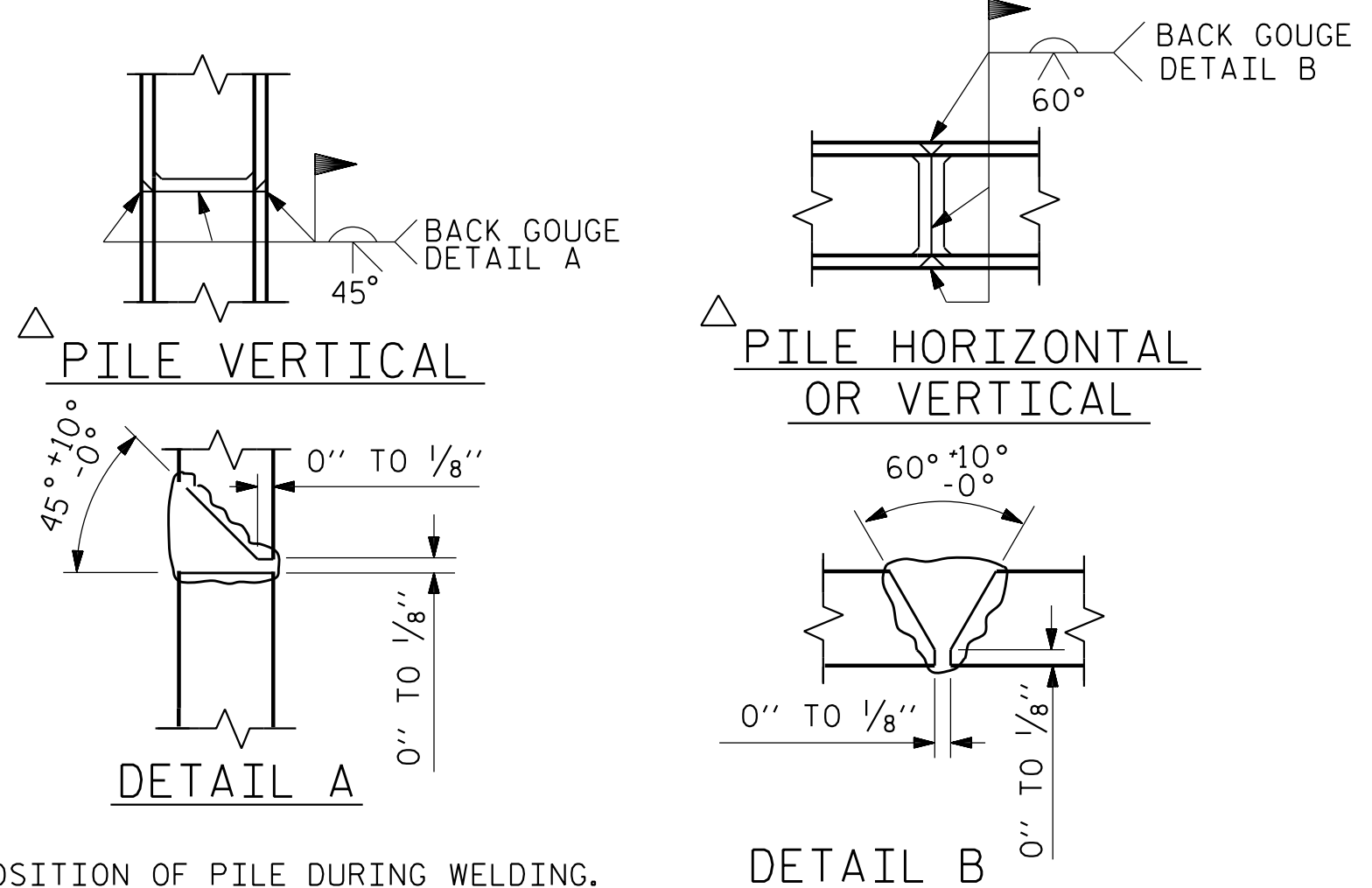


SECTION B-B

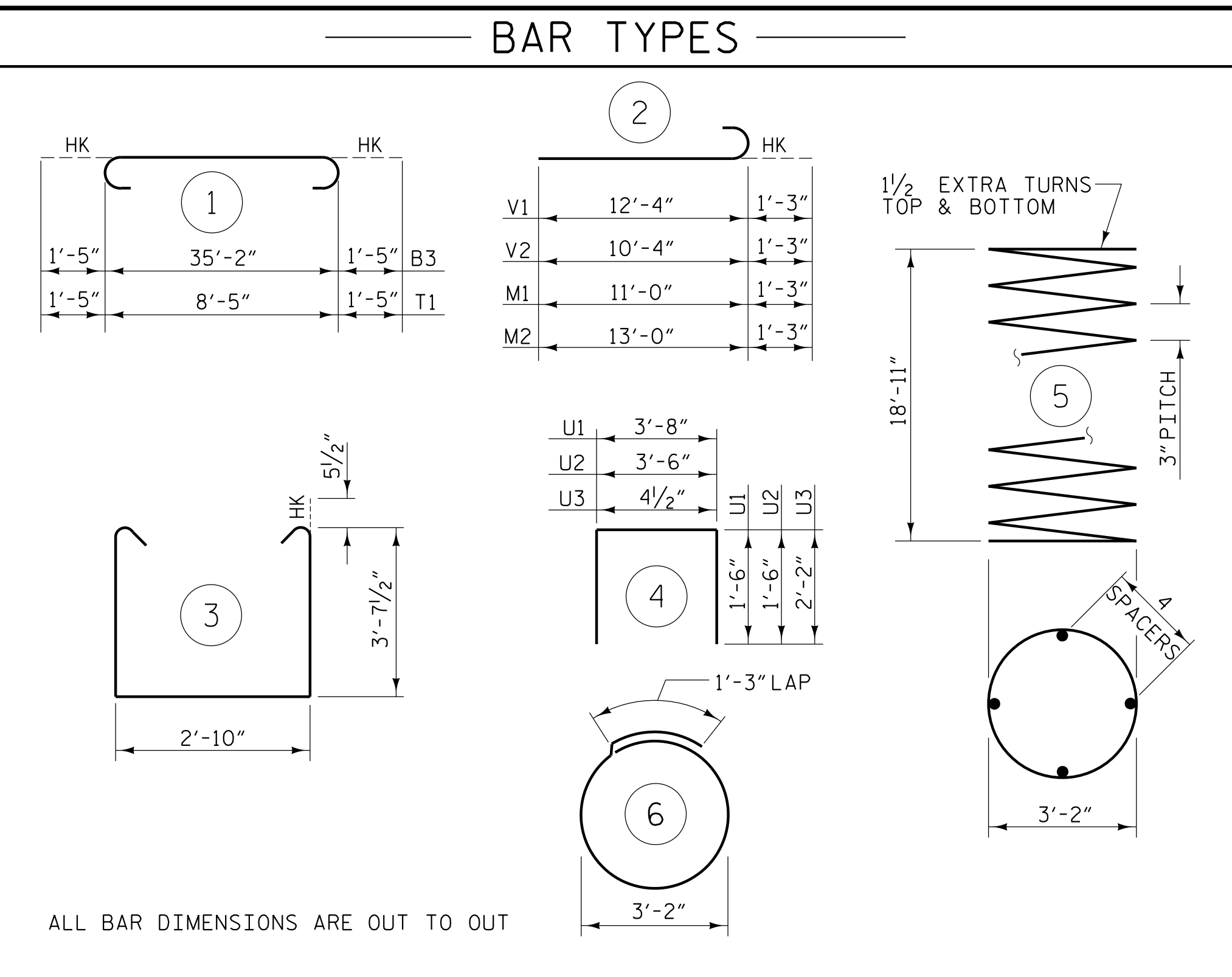


CAP END VIEW

(TYP. EACH END)

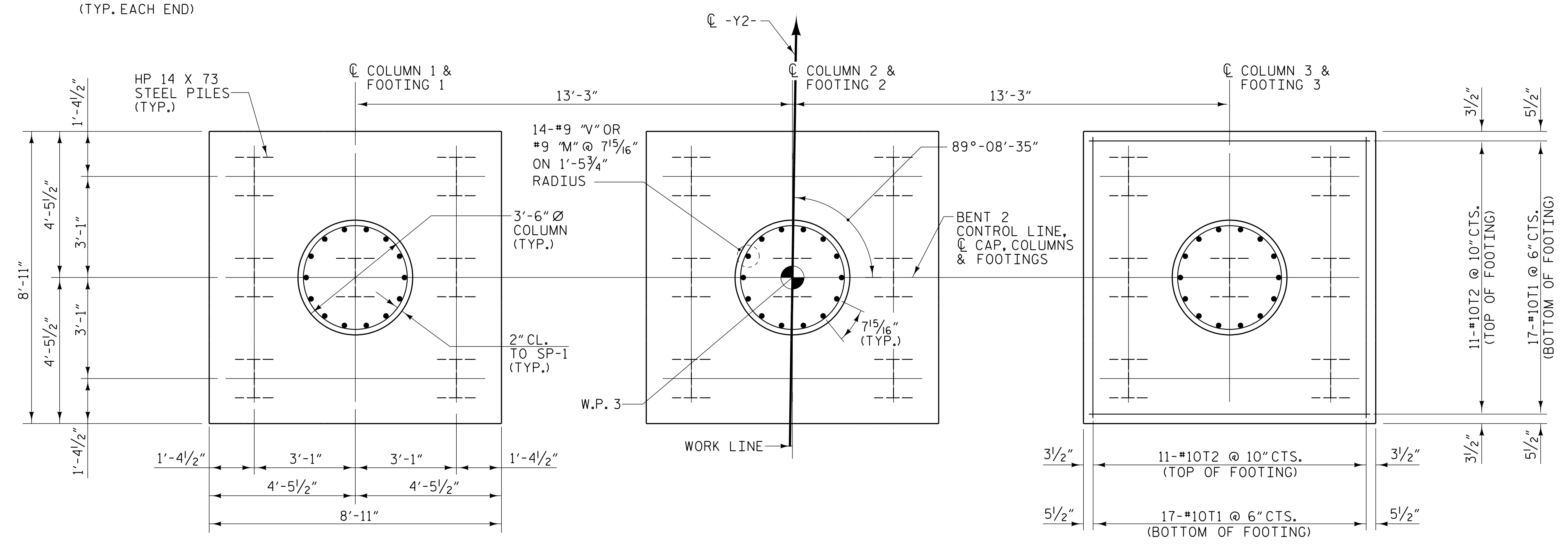


PILE SPLICE DETAILS



** THE SP-1 SPIRAL REINFORCING STEEL SHALL BE W31 OR D-31 COLD DRAWN WIRE OR #5 PLAIN OR DEFORMED BAR.

BILL OF MATERIAL					
BENT 2					
BAR	NO.	SIZE	TYPE	LENGTH	WEIGHT
B1	6	#10	STR	35'-2"	908
B2	10	#5	STR	35'-2"	367
B3	6	#10	1	38'-0"	981
B4	6	#4	STR	13'-9"	55
M1	21	#9	2	12'-3"	875
M2	21	#9	2	14'-3"	1017
S1	100	#5	3	11'-0"	1147
S2	33	#4	6	11'-3"	248
U1	36	#4	4	6'-8"	160
U2	16	#4	4	6'-6"	69
U3	48	#6	4	4'-9"	342
V1	21	#9	2	13'-7"	970
V2	21	#9	2	11'-7"	827
T1	102	#10	1	11'-3"	4938
T2	66	#10	STR	8'-5"	2390
TOTAL REINFORCING STEEL					15294 lbs.
SPIRAL COLUMN REINFORCING STEEL (SP)					
SP-1	3	**	5	786'-3"	2460
TOTAL SPIRAL COLUMN REINFORCING STEEL					2460 lbs.
CLASS "A" CONCRETE - CU. YARDS					
POUR 1 - FOOTINGS				33.9 CU. YDS.	
POUR 2 - COLUMNS				20.0 CU. YDS.	
POUR 3 - CAP				21.6 CU. YDS.	
TOTAL CLASS "A" CONCRETE					75.5 CU. YDS.
HP 14 X 73 STEEL PILES					
21 PILES REQUIRED - LIN. FEET				1596	
PILE DRIVING EQUIPMENT SETUP FOR HP 14 X 73 STEEL PILES - EACH					21
STEEL PILE POINTS					21 EA.
PILE REDRIVES					8 EA.



PLAN OF COLUMNS AND FOOTINGS

(DIMENSIONS AND REINFORCING STEEL ARE TYPICAL FOR EACH COLUMN AND FOOTING)



PROJECT NO. R-5819
COLUMBUS COUNTY
STATION: 40+06.72 -Y2- POT

SHEET 2 OF 2

STATE OF NORTH CAROLINA DEPARTMENT OF TRANSPORTATION RALEIGH					
SUBSTRUCTURE BENT 2					
REVISIONS					SHEET NO.
NO.	BY:	DATE:	NO.	BY:	DATE:
1			3		
2			4		
					S1-31
					TOTAL SHEETS 38



DOCUMENT NOT CONSIDERED FINAL
UNLESS ALL SIGNATURES COMPLETED

4/12/2022 10:25:26 AM G:\Projects\2016\20160320\CLIENT\Structures\R-5819 -Y2-YR5819_SML_B4_230422.dgn