

NOTES

STIRRUPS AND "U" BARS IN CAP MAY BE SHIFTED AS NECESSARY TO CLEAR ANCHOR BOLTS.

HOOKS ON "V" BARS MAY BE TURNED AS NECESSARY FOR PLACING REINFORCING STEEL.

LONGITUDINAL REINFORCING STEEL IN THE COLUMN MAY BE SPLICED USING MECHANICAL BUTT SPLICES WHERE SHOWN IN THE ELEVATION VIEW. ADJACENT SPLICES TO BE OFFSET 2'-0". MECHANICAL BUTT SPLICES SHALL BE IN ACCORDANCE WITH THE STANDARD SPECIFICATIONS. MECHANICAL BUTT SPLICES SHALL BE SUBMITTED FOR APPROVAL. NO EXTRA PAYMENT WILL BE MADE FOR USING MECHANICAL BUTT SPLICES OR MODIFYING BAR LENGTHS. THE COST WILL BE INCIDENTAL TO REINFORCING STEEL.

FOR PILE SPLICE DETAILS, SEE SHEET 2 OF 2.

FOR SECTIONS A-A & B-B, SEE SHEET 2 OF 2.



PROJECT NO. R-5819
 COLUMBUS COUNTY
 STATION: 40+06.72 -Y2- POT

SHEET 1 OF 2

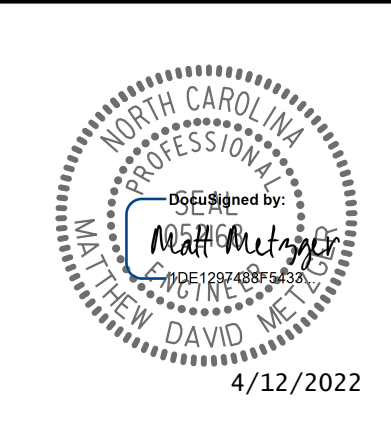
STATE OF NORTH CAROLINA
 DEPARTMENT OF TRANSPORTATION
 RALEIGH

SUBSTRUCTURE
 BENT 2

REVISIONS						SHEET NO.
NO.	BY:	DATE:	NO.	BY:	DATE:	S1-30
1			3			TOTAL SHEETS
2			4			38

DRAWN BY : W. B. ALLEN DATE : 8/21
 CHECKED BY : M. D. METZGER DATE : 1/22
 DESIGN ENGINEER OF RECORD: M. D. METZGER DATE : 1/22

**DOCUMENT NOT CONSIDERED FINAL
 UNLESS ALL SIGNATURES COMPLETED**



4/12/2022 10:25:26 AM G:\Projects\2016\20160320\CLIENT\Structures\R-5819 -Y2-YR5819_SML.B3.230422.dgn