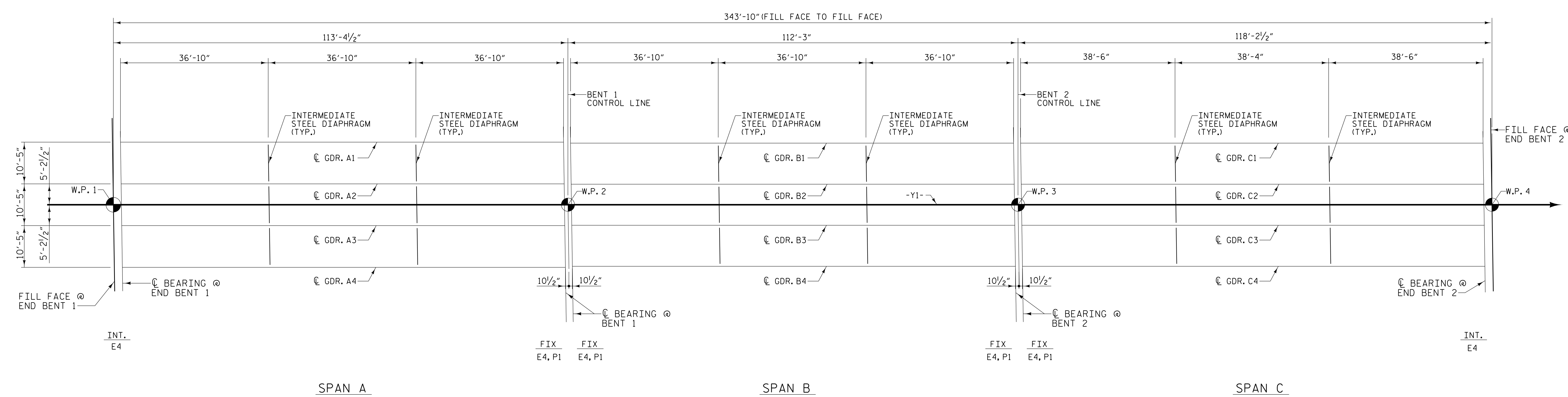


NOTES
FOR DIAPHRAGM DETAILS, SEE "SUPERSTRUCTURE INTERMEDIATE STEEL DIAPHRAGM" SHEET.



FRAMING PLAN

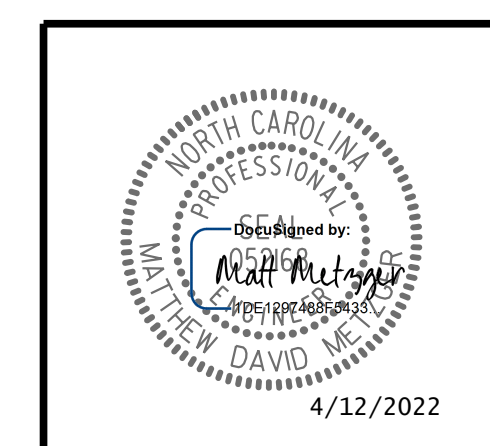
PROJECT NO. R-5819
COLUMBUS COUNTY
STATION: 40+06.72 -Y2- POT

STATE OF NORTH CAROLINA
DEPARTMENT OF TRANSPORTATION
RALEIGH
SUPERSTRUCTURE
FRAMING PLAN

PLANS PREPARED BY:

NV5

NV5 ENGINEERS & CONSULTANTS, INC.
3300 REGENCY PARKWAY, SUITE 100
CARY, NC 27518
P: 919.851.1912 www.NV5.com
NC License # F-1333
Formerly CAVI Engineers & Consultants



REVISIONS						SHEET NO.
NO.	BY:	DATE:	NO.	BY:	DATE:	13-13
1			3			TOTAL SHEETS
2			4			38

DRAWN BY :	W. B. ALLEN	DATE :	6/21
CHECKED BY :	M. D. METZGER	DATE :	8/21
DESIGN ENGINEER OF RECORD:	M. D. METZGER	DATE :	1/22

**DOCUMENT NOT CONSIDERED FINAL
UNLESS ALL SIGNATURES COMPLETED**

4/12/2022 10:25:18 AM G:\Projects\2016\20160320\CLIENT\Structures\R-5819 -Y2-YR5819.SML.FP_230422.dgn