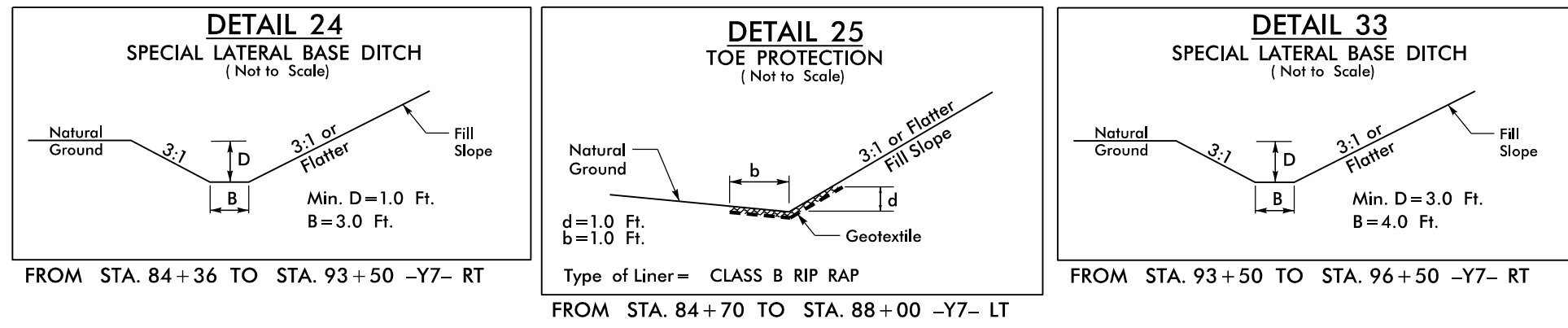


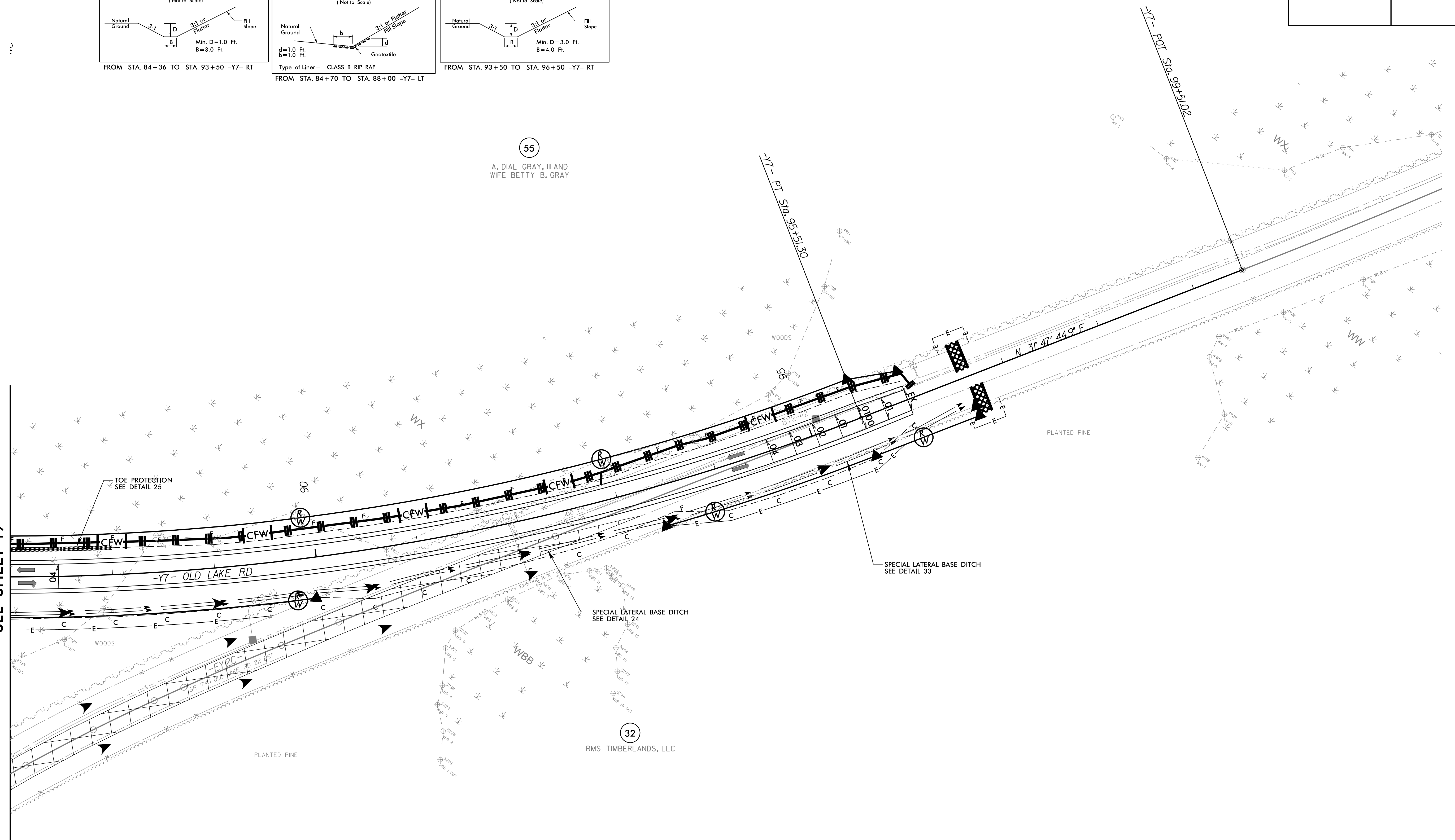
PROJECT REFERENCE NO.	SHEET NO.
R-5819 /R-5820	EC-61/CONST.25
RW SHEET NO.	
ROADWAY DESIGN ENGINEER	HYDRAULICS ENGINEER

-Y7-
 PI Sta 90+98.48
 $\Delta = 22^\circ 52' 08.1''$ (LT)
 $D = 2^\circ 29' 28.0''$
 $L = 918.02'$
 $T = 465.20'$
 $R = 2,300.00'$
 $SE = 04$



REVISIONS

MATCH LINE -Y7- STA 87+00.00
 SEE SHEET 19



55
 A. DIAL GRAY, III AND
 WIFE BETTY B. GRAY

32
 RMS TIMBERLANDS, LLC

NOTES:
 ▨ PROP PAVED SHOULDER
 ▩ PAVEMENT REMOVAL
 FOR -Y7- PROFILE, SEE SHEET 38

8/17/99
 3/14/2022
 R5819_R5820_REU_EC_PSH25_FINAL.dgn
 TIS:R5819