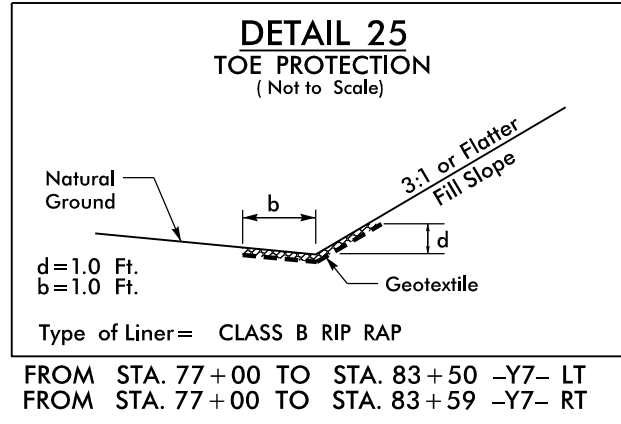
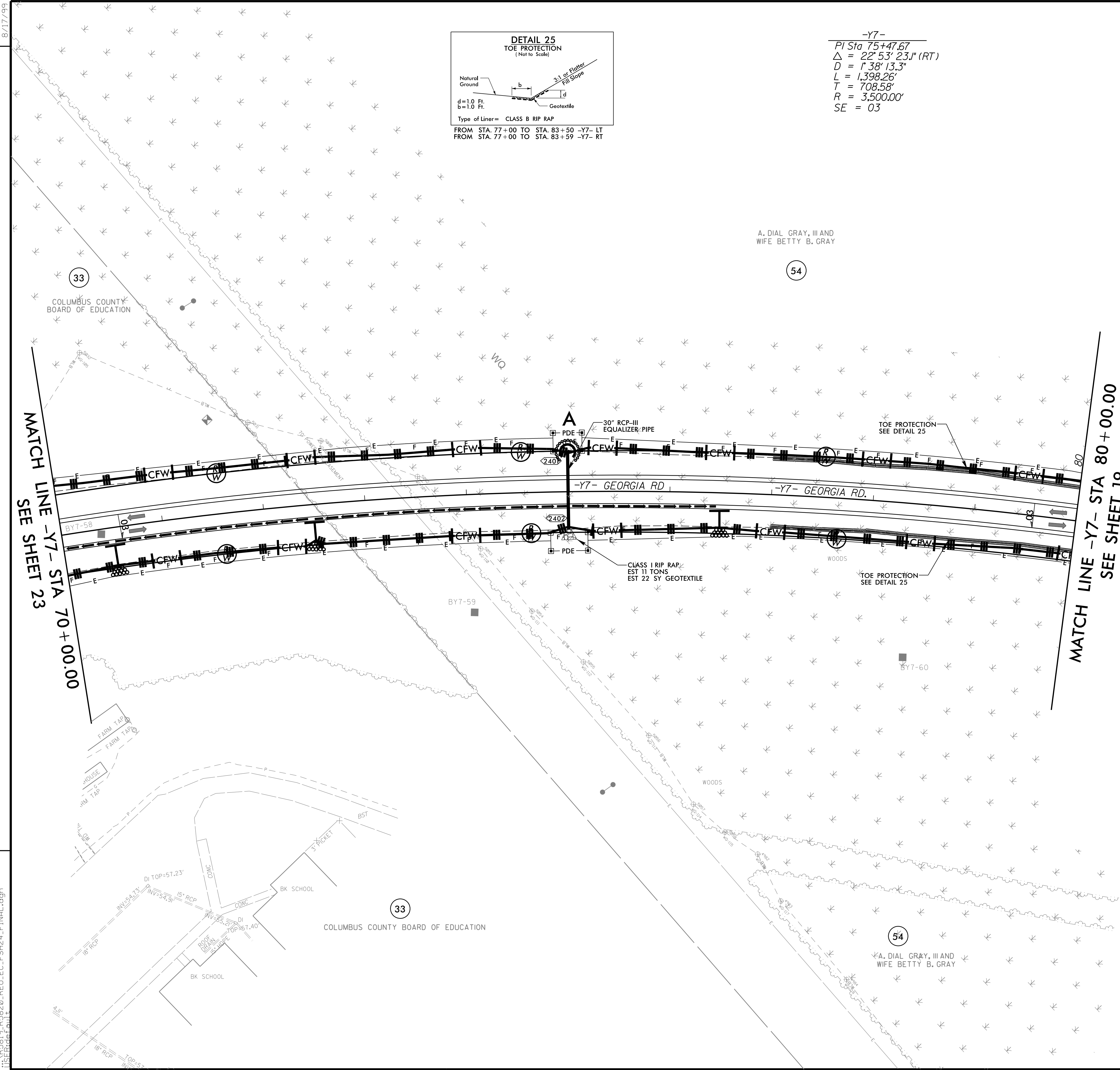


PROJECT REFERENCE NO.	SHEET NO.
R-5819 /R-5820	EC-60/CONST.24
RW SHEET NO.	
ROADWAY DESIGN ENGINEER	HYDRAULICS ENGINEER



-Y7-  
PI Sta 75+47.67  
 $\Delta = 22' 53" 23.1" (RT)$   
 $D = 1' 38" 13.3"$   
 $L = 1,398.26'$   
 $T = 708.58'$   
 $R = 3,500.00'$   
 $SE = 03$

REVISIONS



3/14/2022  
R5819-R5820-REV-EC-FSH24-FINAL.dgn  
TUS:frd

NOTES:  
 PROP PAVED SHOULDER  
 FOR -Y7- PROFILE, SEE SHEET 37